

## THE DAILY NEWS

THE LEADING NEWSPAPER IN NORTHERN BRITISH COLUMBIA  
Published Daily and Weekly by  
THE PRINCE RUPERT PUBLISHING CO. LTD., PRINCE RUPERT, B.C.

SUBSCRIPTION RATES—To Canada, United States and Mexico:  
Daily, 50c per month, or \$5.00 per year, in advance. Weekly,  
\$2.00 per year. All Other Countries: Daily, \$8.00 per year.  
Weekly, \$2.50 per year, strictly in advance.

## HEAD OFFICE

Daily News Building, Third Ave., Prince Rupert, B. C. Telephone 98.

## BRANCH OFFICES AND AGENCIES

New York—National Newspaper Bureau, 219 East 23rd St., New York City.

Seattle—Puget Sound News Co.

London, England—The Clougher Syndicate, Grand Trunk Building, Trafalgar Square.

TRANSIENT DISPLAY ADVERTISING—50 cents per inch. Contract rates on application.

Subscribers will greatly oblige by promptly calling up Phone 98 in case of non-delivery or inattention on the part of The News carriers.

DAILY EDITION

Tuesday, Sept. 23, 1913.

## COLD STORAGE EMERGENCY.

There is a story told of a Chicago cold storage egg. Once upon a time a western bachelor purchased a case of cold storage eggs for winter consumption. On one of the eggs he found written a message asking the purchaser to communicate with the girl who had packed this particular egg and suggesting that such communication might lead to matrimony. The western bachelor wrote to the address given and offered his heart, hand and name. The reply came back in due course. "Too late; I was married four years ago and have two children," she wrote. Perhaps there is an analogy to be drawn with Mr. Borden's "emergency." It was fresh packed a year ago. It is a little added now, but still "an emergency."

Possibly two years hence it will still be doing duty as a "strictly fresh, new laid emergency." But the country is hardly likely to offer its heart and hand to the packer, Mr. Borden, then, on the strength of the message on the label.

## MORE PARTY MEANNESS.

Last year the postmaster general wiped the name of "Graham" off the post office map. The name was given in compliment to the then minister of railways to the junction point of the National Transcontinental and the G. T. P. branch to Fort William. Mr. Pelletier for obvious reasons didn't like the name and had it changed. Once upon a time Mr. Pelletier dismissed a Grit postmaster who had been dead several years.

## AERIAL DEFENCE OF BRITISH COASTS RAPIDLY ESTABLISHED

STATIONS FOR AIRSHIPS AT ALL IMPORTANT POINTS—AIR COMMITTEE A PERMANENT SUB-COMMITTEE OF IMPERIAL DEFENCE.

The aerial defences of the coast, particularly on the eastern side, are being developed by the admiralty with considerable energy, says the London Standard. Since the first naval air station was established in the Isle of Grain, at the mouth of the Thames and Medway, on December 31 last, several other stations have been brought into existence, those now "in commission" being as follows: Calshot, at the entrance to Southampton Water; Isle of Grain, covering the docks yards at Sheerness and Chatham; Harwich, Great Yarmouth, Firth of Forth, covering the new naval works at Rosyth; Cromarty, where extensive naval and other developments are in progress. In addition to these, the erection of a number of other stations has been decided upon.

The air committee, which is a permanent sub-committee of the committee of imperial defence, is actively engaged in co-ordinating the work of both branches of the Royal Flying Corps, with the result that the naval and military wings are working in such close co-operation as to be almost interchangeable. The advisability of this is obvious, since under these conditions the military wing would be able to assist the navy in offensive work on hostile coasts, while in defensive work the two would naturally be called upon to work together.

Other places at which naval air stations are to be established are Cleethorpes (on the Humber), Scarborough, Dundee, Dover and Scapa Flow, and other places will be added as the resources at the disposal of the admiralty increase. The navy now possesses between eighty and ninety qualified pilots and although the number of machines is lamentably small, deliveries are being made with considerable rapidity.

The depot ship of the naval air service, the light cruiser Hermes, in which three seaplanes and the necessary launching and recovering apparatus are carried, has gone to Scapa Flow, in the Ork-

neys, where experiments of great importance will be conducted with the object of ascertaining the value of the seaplane for attacking warships of the smaller classes, and the accuracy with which missiles can be dropped from them.

The war office has now decided to order the second squadron of the Royal Flying Corps to Ireland, states the Dublin Evening Mail. This squadron consists of twelve aeroplanes, and is due to arrive in Ireland at an early date. Their camping ground will be at Limerick and Birr, and the squadron will be engaged under service conditions in the Irish military manoeuvres. It is believed to be quite possible, adds the report, that the arrangement, at present temporary, may be placed on a permanent basis.

## NOT COLD FEET AT ALL

Everett Kissick Merely Showed Good Discretion.

Warren Kissick thinks the paragraph The News published from the Whitehorse Star yesterday was not written with a knowledge of the full facts in the case. He has a letter from his brother Everett which shows that the latter has no cold feet in regard to his trip to Chisana, but is using admirable discretion. When he arrived at Whitehorse he found the season too late and instead of bulling it through like so many stampedees did he will await the freeze up. He has a thousand pounds of provisions and a good outfit and says in his letter that he will be among the first to go in over the winter trail.

## Demers.

New shipment of dresses, including serge, corduroy, afternoon and evening dresses.

222-24

A fool may be as happy in his folly as a wise man is lonely in his wisdom.



## FUTURE EMPEROR AND BOY.

Crown Prince Frederick William of Germany and his youngest son, Prince Frederick. The Crown Prince has grown irritable lately under the rigid discipline of the military division to which he is attached.

## Demers.

New shipment of dresses, including serge, corduroy, afternoon and evening dresses.

222-24

Old bachelors are not all women haters; the majority are in the "Doubting Thomas" class.

## Port Edward

PRINCE RUPERT'S INDUSTRIAL ANNEX

A launch leaves the government slip for Port Edward every day. For particulars apply to Harrison, Gamble & Co., Phone 51, 3rd Ave.

## Hotel : Directory

Members P.R.L. Vintners Association

PRINCE RUPERT INN AND ANNEX  
Owned and Operated by the Grand Trunk Pacific Ry.  
Geo. A. Sweet, Manager

WINDSOR HOTEL  
Corner of First Ave. and Eighth St.  
W. H. Wright, Prop.

HOTEL CENTRAL  
First Avenue and Seventh St.  
European and American Plan  
Peter Black, Prop.

KNOX HOTEL  
First Ave., Between Eighth and Ninth  
European Plan, Rates 50c to \$1.00  
Per Day  
Beaser & Beaser, Props.

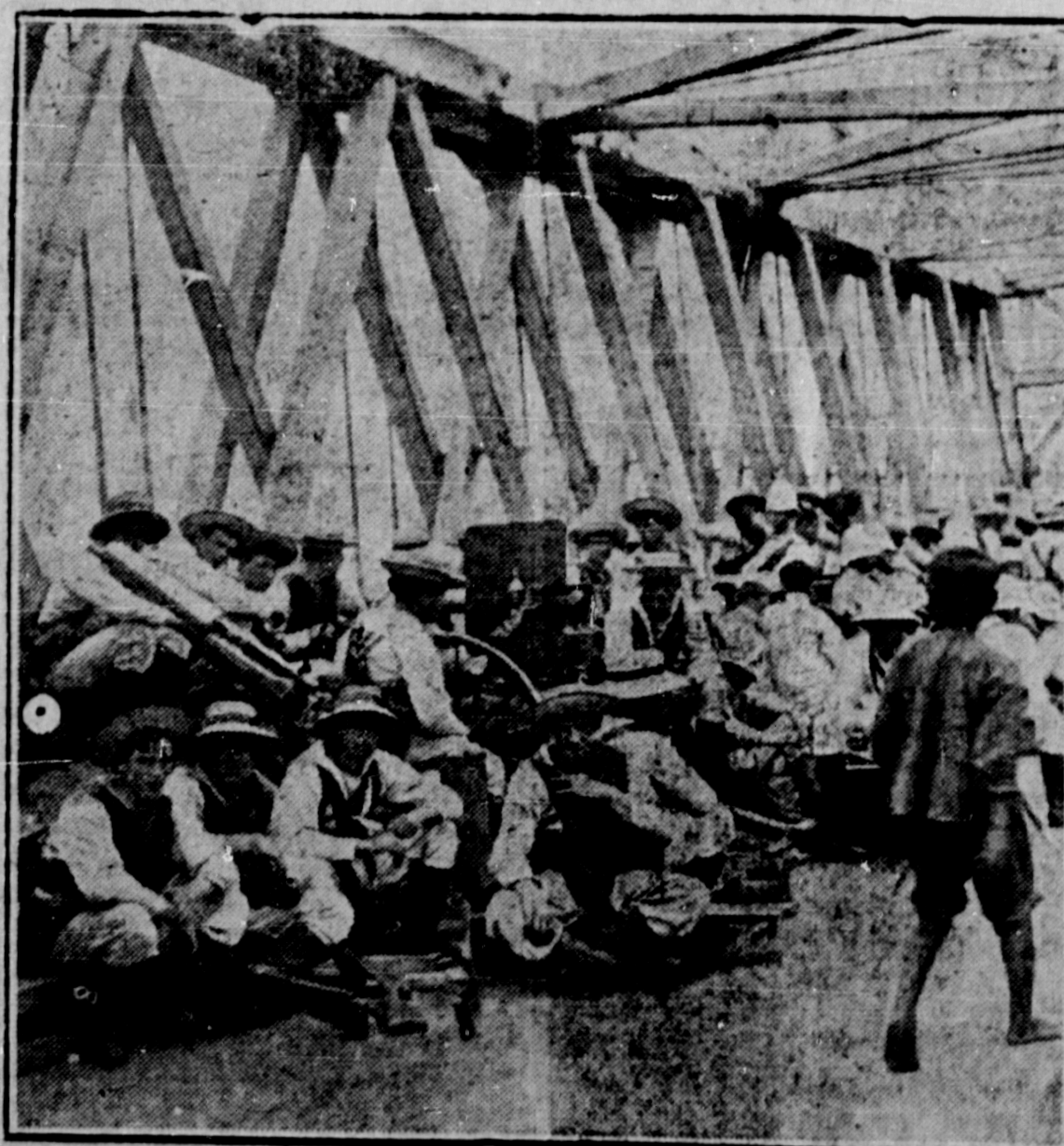
J. Y. Rochester V. D. Casley  
EMPEROR HOTEL  
Third Ave., Between Sixth and Seventh Streets  
European Plan, 50 to \$1 Per Day

PREMIER HOTEL  
American and European Plan  
F. W. Henning, Manager

ROYAL HOTEL  
Corley & Burgess, Props.  
Third Ave. and Sixth St.  
European Plan Steam Heated

BEAVER WHOLESALE LIQUOR CO., LIMITED  
Second Ave. and Sixth St.  
Phone 102

PRINCE RUPERT IMPORTING CO., LIMITED  
Fraser and Sixth Sts.  
Phone 7



## GUARDING BRITISH SETTLEMENT AT HONGKONG.

Bluejackets and marines from two of His Majesty's ships at Hongkong ready to check the insurgents if they attempt to harm the British settlement. Guns have been landed and every detail has been looked after for the safety of the English in China.

**GRAND TRUNK PACIFIC** Double Weekly Service TO THE SOUTH by the splendid steamers PRINCE RUPERT and PRINCE GEORGE

Leave Prince Rupert for Vancouver, Victoria and Seattle on Mondays and Fridays at 9 A. M.  
For Stewart on Thursdays at 8 A. M.  
For Granby Bay on Saturdays at 12 P. M.  
Steamers Prince John and Prince Albert

Maintain Weekly Service Between Victoria, Vancouver and Prince Rupert via Queen Charlotte Islands, calling at Way Ports. Leave Prince Rupert via Harbor Saturdays at 3 P. M. A 150 Weekly Service to Nassau and Naden Harbor, leaving Prince Rupert on Wednesdays at 8 P. M.

**RAILWAY SERVICE**  
Train No. 2 leaves Prince Rupert, eastbound, 10 a.m. Wednesdays and Saturdays

**SPECIAL LOW EXCURSION RATES** to all points east via optional routes in connection with the GRAND TRUNK RAILWAY SYSTEM, May 28th to Sept. 30th. Returning limit Oct. 31st.  
For through tickets, reservations, etc., apply to  
A. DAVIDSON  
Office 3rd Avenue Prince Rupert Phone 200

**CANADIAN PACIFIC RAILWAY**  
**ARE YOU GOING EAST THIS SUMMER?**  
Special Excursions May 28th to September 30th.  
Returning Limit October 31st.  
Vancouver to Toronto and return \$62.00  
Vancouver to Montreal and return \$105.00  
Vancouver to New York and return \$108.50  
Vancouver to Chicago and return \$72.50  
Vancouver to St. Paul and return \$60.00  
Other Points Correspondingly Low.  
J. G. McNab  
General Agent Cor. 3rd Ave & 6th St  
Princess Sophia, South, Saturday, 9 a.m.

**DYER APARTMENTS**  
2 and 3 Rooms, \$15.00 and \$20.00 Per Month  
PARTLY FURNISHED  
Free Use of Electric Washer  
Auto for Hire  
1029 3rd Ave. Phone Black 324

**Little's NEWS Agency**  
Magazines :: Periodicals :: Newspapers  
CIGARS :: TOBACCO :: FRUITS  
2nd Ave. Below Kallen Island Club and 3rd Avenue Next to Post Office

**Empress Bowling Alleys AND POOL ROOM**  
4 ALLEYS 12 TABLES  
M. E. ROSE, Prop. 3rd Ave.  
Prince Rupert Employment Bureau Phone 234  
O. Box 4 LICENSED AGENTS

**COAL**  
New Wellington Coal. Best on the Coast  
Phone 116 Rogers & Black

**SMITH & MALLETT**  
THIRD AVE.  
Plumbing, Heating, Steamfitting and Sheet Metal Work  
Office: 3rd Ave. Phone 174 2nd Ave. bet. 7th and 8th Sts. Working Phone 234

**"Valhalla" of S.H. & E.F.**  
(SCANDINAVIAN SOCIETY)  
Meets every 2nd and 4th Tuesday at 8 p.m. in the hall at 319 3rd Ave.

**D. C. STUART**  
Accountant  
309 2nd Ave. Phone 230  
PRINCE RUPERT, B. C.

Alex. M. Manson, B. A.  
W. E. Williams, B. A., L. L. B.  
**WILLIAMS & MANSON**  
Barristers, Solicitors, Etc.  
MONEY TO LOAN  
Box 1555  
Helferson Block Prince Rupert, B. C.

**HAYNER BROS.**  
UNDERTAKERS AND EMBALMERS  
Funeral Directors  
2nd Ave. near 6th St. Phone No. 11

**E. L. FISHER**  
Funeral Director and Embalmer  
CHARGES REASONABLE  
2nd St., cor. 2nd Ave. Phone 354  
OPEN DAY AND NIGHT

Advertise in  
**The Daily News**

## THE REXALL STORES

Free Delivery from 8 A. M. to 9 P. M.

TWO BIG STORES

C. H. ORME

Phones 82 and 200

The Pioneer Druggist

"FROM HOME TO HOME."

## HOTEL ELYSIUM

Sid. Sykes, Manager

The Finest, Newest and Most Up-to-date Hotel in Vancouver.  
Excellent Cafe. Moderate Prices.

1142 Pender Street West - - Vancouver, B.C.

Phone 8500.

## Get Next the Grower and Reduce the Cost of Living

To encourage the North, to develop the North, I am offering for the Exhibition Week 1,000 special Household Crates containing the following Vegetables fresh from the ground and of excellent quality:

Two bunches Celery, some Cauliflower, about 15 lbs. New Potatoes, about 30 lbs. Cabbage, about 10 lbs. Parsnips, about 10 lbs. Carrots, about 30 lbs. Turnips, some Parsley (approximating 100 lbs. weight for \$2.25. Delivered to your door in Rupert. Be sure the correct address is on the receipt as the carbon copy is our guide in delivering.

This is about half the price you are paying for stale vegetables from below. For the butcher, the shacker and the householder this is the opportunity to lay in winter stores that if required will keep. Place your orders at the stall of the DELKATLAH MARKET GARDENS at the Exhibition or send a letter to

CHAS. M. WILSON, OWNER DELKATLAH GARDENS AND TOWNSITE  
Box 2, Prince Rupert, B. C.

## The 'News' for Artistic Printing

## It Was One of the Boss' Usual Stunts

Drawn for The Daily News by "Hop"

