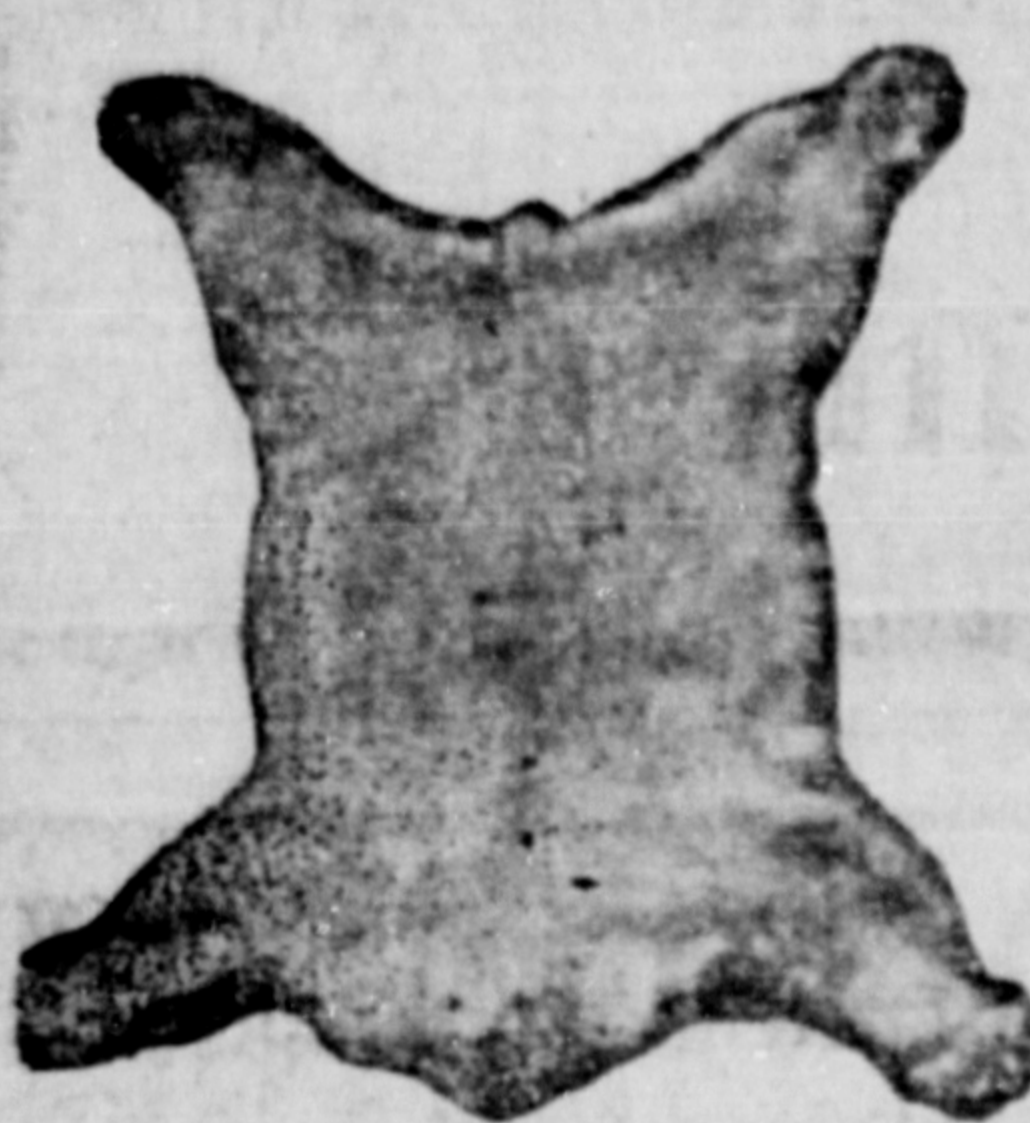


What are Peps

Peps provide a new treatment for coughs, colds and lung troubles. They are little tablets made up from Pine extracts and medicinal essences. When put into the mouth these medicinal ingredients turn into healing vapors, which are breathed down direct to the lungs, throat and bronchial tubes. The Peps treatment is direct. Swallowing cough mixtures into the stomach, to cure ailments and disorders in throat and lungs, is indirect. Peps are revolutionizing the treatment of colds and their price is within the reach of all. All dealers, 50c. box. Send 1c. stamp for FREE TRIAL PACKAGE.

TAXIDERM



in all its branches.
Work life-like. Satisfaction
Guaranteed.
D. C. TAIT
1116 Broadway, Vancouver, B.C.

We have now on hand

1000 Tons
Wellington Coal
1000 Tons
Edson Coal

As we anticipate not only a scarcity and increase in price of coal but also a difficulty in meeting your demands for prompt delivery this fall, we strongly recommend that you make sure of your winter's supply now by phoning

118, 564, Blue 69
Albert & McCaffery
Limited

WARD

**Electric & Marine
Supply Co.**

Cow Bay, Prince Rupert
**ELECTRIC AND GASOLINE
ENGINE SUPPLIES**
MARINE HARDWARE
representing Canadian Fairbanks Morse, Ltd.,
Marine C. O. Crude Engines
Stationary Engines
Gasoline Saw Saws
Circular Saw Frames
Pumps, etc.
Electric Light Plants
Self starting—slow speed
—will operate on Kerosine
—the most simple and reasonably priced outfit on the market. Write us for full particulars.

TERRACE FRUIT LANDS

10 Acre Tracts 2 miles from Terrace at \$500 per acre on terms of 1-3 cash, balance 6 and 12 months. All land easily cleared.
160 acres, 4 1/2 miles out on main wagon road. Good soil with clay sub-soil. All good land and level. Timber on this land is reserved by the government. Price—\$11 per acre, cash.
15 1/2-acre lots adjoining Baseball Field and Terrace Township just put on the market. All good level lots. Ideal sites for a summer home. These will not last long.
Price: \$300 per lot; Terms 1-4 cash, 6, 12 and 18 months.

Kenney Bros. & Co.
Real Estate Brokers
Terrace - - B.C.

Major Bullock-Webster Tells of Launching Canadian Traveller

In view of the fact that the first of the big ships being built here will take the water soon, L. Bullock-Webster, formerly of this city and now connected with the Harbor Marine yard at Victoria, writes most interestingly to this paper telling of the launching of a similar ship at Victoria. He says:

To the public in general the launching of a big ship is a very wonderful and incomprehensible affair and though at a certain moment the spectator sees the huge mass come to life as it were, and move first slowly and then with ever-increasing speed until it takes the final plunge into the water, the active manner in which human ingenuity contrives this thing is seldom explained or understood.

A few details concerning the "Traveller," which was so successfully accomplished by the Harbor Marine Company, may therefore be of general interest.

She is an 8,100 ton boat, and up to the morning of the launching her huge weight was carried on one central row of steel blocks resting on the rocky bottom of the slipway, supplemented, of course, by shoring on each side.

The launchways had been placed in position and the cradles adjusted, and about four hours before high tide hundreds of blacklead wedges were driven in by hand on both sides, so as to bring the weight of the ship on to the launchways and relieve the pressure on the keel blocks. Then at a given signal from the naval architect the central blocks were split and knocked out and everything was ready.

2,650 Tons Weight

In the case of the "Canadian Traveller" the actual weight to be moved was approximately 2,650 tons. Careful calculation is needed to be sure that this weight can be safely carried. It is never wise to have more than two and a half tons to a square foot at the surface of the launchways. The Harbor Marine Co. was on the safe side. The weight was distributed over 350 feet of the length by 3 feet width, doubled. That is to say, the 2,650 tons were borne on 2,100 superficial feet, or approximately one and a quarter tons to the foot.

The ways had been laid out

NOTICE.

IN THE CASSIAR LAND DISTRICT—THE CHORDING DISTRICT OF SKEENA, AND SITUATE AT ALICE ARM.

TAKE NOTICE THAT TAYLOR MINING COMPANY LIMITED, of 602 Credit Foncier Building in the City of Vancouver, in the Province of British Columbia, a Company duly incorporated under the laws of the said province, intends to apply for permission to lease the following described lands, situated in the vicinity of Lot 3643A, 3643B, 3643C, 3643D, 3643E and 3643F in the Cassiar District on Alice Arm in the Skeena District, commencing at a point situated in the North West corner of Lot 3643A in the Cassiar District, thence running South 5 deg. 29 min. West a distance of 460.75 feet, thence North 84 deg. 12 min. West a distance of 175.7 feet to the southerly boundary of Lot 3643A, thence following the southerly boundary of Lot 3643A North 86 deg. East a distance of 201.3 feet to point of commencement, and containing Two Acres, more or less, which were located on the twelfth day of August, 1920.

C. B. NORTH,
Agent for the Taylor Mining Company Limited.
DATED AT ALICE ARM, B. C., this twelfth day of August, 1920.

IN THE SUPREME COURT OF BRITISH COLUMBIA.
IN PROBATE:

IN THE MATTER OF THE ADMINISTRATION ACT, AND IN THE MATTER OF THE ESTATE OF BALDOMERO SALINAS—DECEASED.

TAKE NOTICE that Probate of the last Will and Testament of Baldomero Salinas was granted to William E. Williams of Prince Rupert, B. C., as Executor on the 2nd day of September, 1920. All persons having claims against the said Estate are required to file the same with the said William E. Williams on or before one month from this date, and all persons owing money to the said Estate are required to pay the same to the said William E. Williams on or before one month from the date hereof.

DATED this 7th day of October, 1920.
WILLIAM E. WILLIAMS,
Executor.

Night Phones - J. G. Steen, 371
W. Longwill, Blue 270
Day Phone 5

STEEN & LONGWILL
Sheet Metal Works

Agent for McClary Furnaces

**Sanitary and
Heating Engineers**

5th Street and Fraser Street
Prince Rupert - - B.C.

Hotel Prince Rupert

EUROPEAN PLAN
\$1.50 per day and up.

FIRST-CLASS CAFÉ
A La Carte.

**Variety of Plants
in bloom arrived**

CHICKENS & BROILERS
CITY MARKET

with a slight curve dipping to the water. Instead of a straight slope down, they formed an arc of a circle with a curve of about 24 inches in their entire length. The keel blocks were arranged with a fall of 7-16ths to the foot at the fore end and an inch to the foot at the lower end.

On Solid Rock

This curve is given for various reason. For one thing it gives better control in holding the ships. It also guards against any danger of made ground or soft ground sinking as the weight of the ship comes over it and thereby causing a dip in the launchways. However, at the Harbor Marine there is no risk of this occurring as the bottom of the slipways are solid rock.

This makes it all the more difficult to hold the ship until the appointed hour for launching. Therefore special arrangements had to be made to enable the ship to be controlled.

The forward bilge blocks were retained in position, using canvas bags of dry sand against the hull of the ship instead of the usual timber. The dog shores were also arranged on an entirely new principle, adopting dry sand to automatically release at the moment the sponsor cut the ribbon of the guillotine. This arrangement is the invention of J. S. Clark (the Naval Architect). He wished to overcome the risk of a repetition of what happened when launching the "Canadian Winner." It will be remembered that a craft entered the fairway, causing obstruction just as the "Winner" was beginning to move. She could not be released for fear of colliding with the incoming craft. The result was that the dog shores jammed and had eventually to be cut out with axes.

The new invention (which was very simple, as many great inventions have been) consisted in replacing the usual solid chock—which is bolted to the standing or ground ways to hold the dog shores in position—by a heavy steel box about 4 feet in length and 8 inches square, internal dimensions, heavily secured to the ground ways.

Box of Sand

Into the box was fitted a sliding chock of iron-bark (a hard wood from the Philippines) with a housing of about 24 inches. The rest of the box being filled with fine dry sand heavily compressed before the dog shore was fitted in position. In the bottom of the box at the rear end is a good sized hole blocked with a chock supported by a shore which can be easily knocked away. At the right psychological moment the sand is allowed to run out through the hole, relieving the pressure on the chock, as the sponsor cuts the ribbon with her dainty scissors the guillotine falls and cuts a cord which releases a 28 lb. weight, which falls on the end of the dog shore, knocking it down, and the ship slips gracefully down to the water.

All So Simple

Any sand bags that are holding too securely are lanced with a knife. The big ship is pulled up by cables cunningly arranged beforehand, which exert a gradual pulling influence in various directions.

It all looks so simple when you see a ship such as the "Canadian Traveller" slide off with perfect precision at exactly the right moment and without a hitch of any kind. One is apt to forget the vast experience needed to make and superintend the necessary preliminary arrangements.

TARIFF REDUCTION

REGINA, Oct. 11.—The Saskatchewan Government joined with the farmers in a demand for tariff reduction before the Tariff Commission this morning.

MACDONALD'S

"The Tobacco with a heart"



ORE men smoke "BRIER"
than any other tobacco in
Canada. It leads in quality
--and leads in value. "Brier"

has become a Canadian institution.
Now "Brier" comes in new form
--Macdonald's Cut "Brier"--the
same tobacco--prepared under the
Macdonald standards established
in 1858. Among cut tobaccos
"Brier" still leads in value. There
is more tobacco for the money in
the 1-12 lb. package at 15 cents.
Half-pound tins 85 cents.

CUT "BRIER"



1/2 lb Tins
85c

1/2 lb
15c

Daily News Classified Ads.

2 CENTS PER WORD IN ADVANCE. No Advertisement Taken for Less than 50c

WANTED.

Young woman wants housework
three or four days a week. Apply
box 114 News office. 40

SITUATIONS WANTED

Young Lady would like employ-
ment in store. Apply P.O. box
577, City. 41

FOR SALE

FOR SALE—Good rooming house
business. 20 rooms well fur-
nished, good location. Mrs. L.
Wolters, St. Louis Rooms, cor-
ner 2nd Ave. and 6th St. Phone
Red 91. 42

FOR SALE—Safe. Price \$125—
News office. 43

Second-hand automobile for sale
cheap. Apply M. H. Large, Em-
press Theatre Block. 44

FOR SALE—Or will trade for ap-
proved close-in Prince Rupert
real estate:—

The fast run-about launch
"Echo" either with or without
engine.

One first-class marine en-
gine.

One first-class large row boat
with 2 1/2 h.p. Caille Perfection
Inboard engine.

M. M. Stephens, Phone 222.

FOR SALE—Stove, utensils and
bed complete, almost new. Also
other household furniture. 819
Conrad Street. 40

FOR SALE—A good bargain—
Rooming house, sixteen rooms
and pool room. Good location.
835 Second Avenue. Phone 557.

FOR SALE—Rooming house, six-
teen rooms, good location, 835
Second Avenue. Phone 557. 41

PURCHASER WILL SAVE \$5.00.00
—One 20 h.p. heavy duty N. &
S. engine price \$2,200.00. The
price of this engine has gone up
\$500.00 since we bought this
from the factory. We have also
on hand 4 h.p. N. & S. engines,
price for same complete, \$390.
Prince Rupert Cigar Store, Main
Street, Vancouver. 41

FOR SALE. Four drays in first
class shape and two express
wagons. These wagons are
good and will be sold for any
reasonable offer. Apply E.
Sweeney, Ivanhoe Hotel, Main
Street, Vancouver.

FOR SALE—Great bargain. Shack
built for two cabins for removal
from lot on Ninth Avenue near
McBride. Owner in Rupert on
Friday. Write box 121 Daily
News office. 39

POULTRY FOR SALE—
pens. Apply E. Sweeney,
Main Street.

FOR SALE—Old newspaper
a large bundle. News
office.

HOUSES FOR SALE—
Apply E. Sweeney,
Main Street.

FOR RENT—For gentlemen
bedroom, good location,
box 119 Daily News
office.

FOR RENT—Two furnished
near Dry Dock. Phone
Blue 91.

LODGE MEETING
LODGE 4051 LOYAL
Moose meets every
evening at the City Hall.

TUTORIAL
Small private class
ing formed. Practi-
enced teacher. Part-
struction, ensuring
suits. Rates reason-
particulars write to
News office.

SHORTHAND—TYPE-
Small private class
ing formed. Practi-
enced teacher. Part-
struction, ensuring
suits. Rates reason-
particulars write to
News office.