

The Golden Gate suspension bridge at San Francisco has a channel span of 4,200 feet.

Giant Refinery Planned To Handle Canadian Oil

BELLINGHAM, Wash.—General Petroleum Corporation will build the first modern full-scale oil refinery in the Pacific Northwest. The \$35,000,000 plant will be located on the Puget Sound near Ferndale, Wash., 12 miles northwest of Bellingham.

R. L. Minckler, General Petroleum's president, said today the refinery will use 35,000 barrels

per day of Canadian crude oil, brought by pipeline from the Alberta oil fields.

The crude oil will move through the 711-mile Edmonton to Vancouver 24-inch pipe line now being built by Trans Mountain Oil Pipe Line Company of Vancouver. A special \$2,750,000 40-mile extension will be built by Trans Mountain to the General Petroleum refinery.

Minckler said construction of obtained from government agencies the new refinery will begin as soon as necessary permits are cities and engineering work is completed. It will be completed in the Fall of 1954.

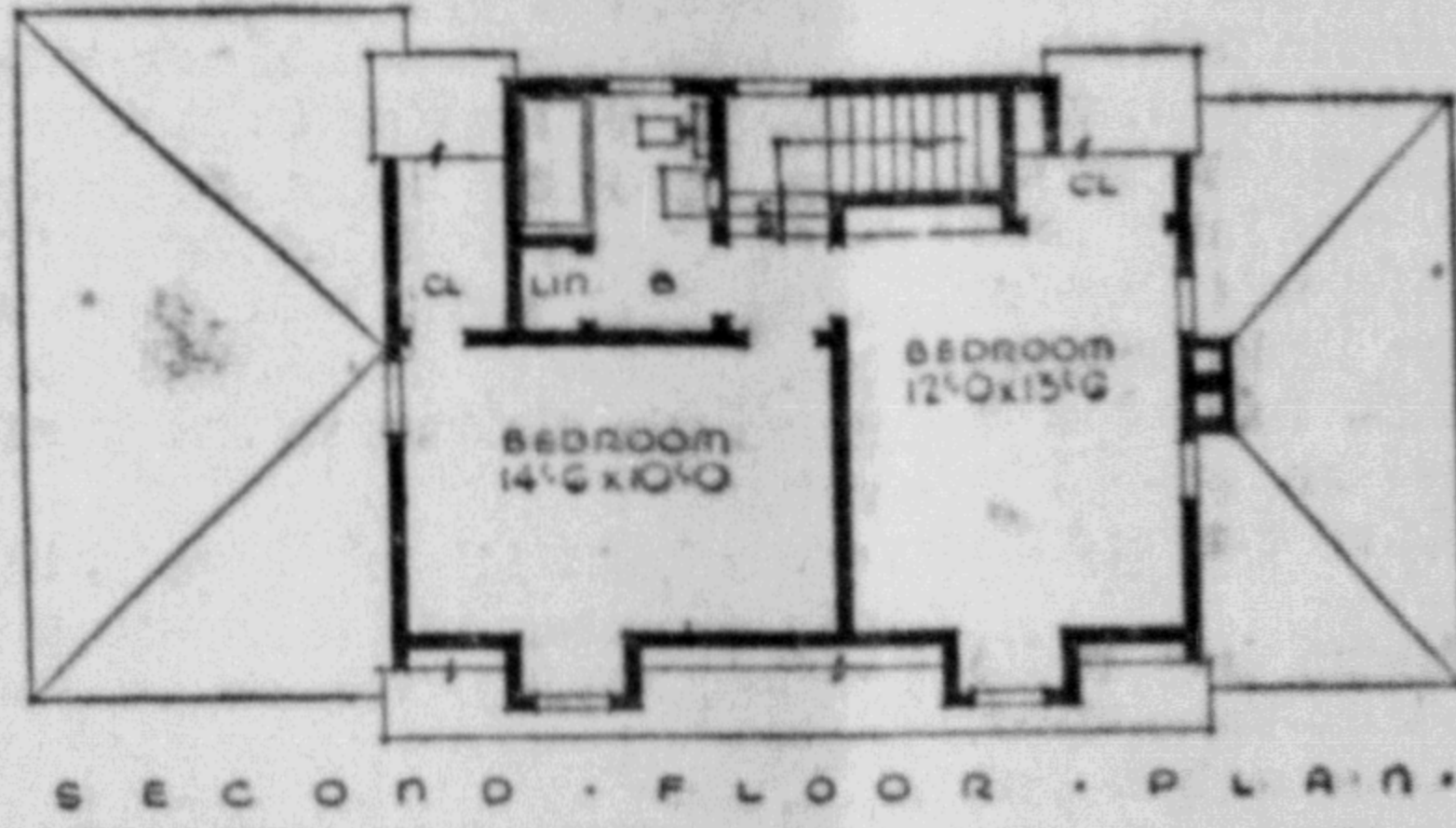
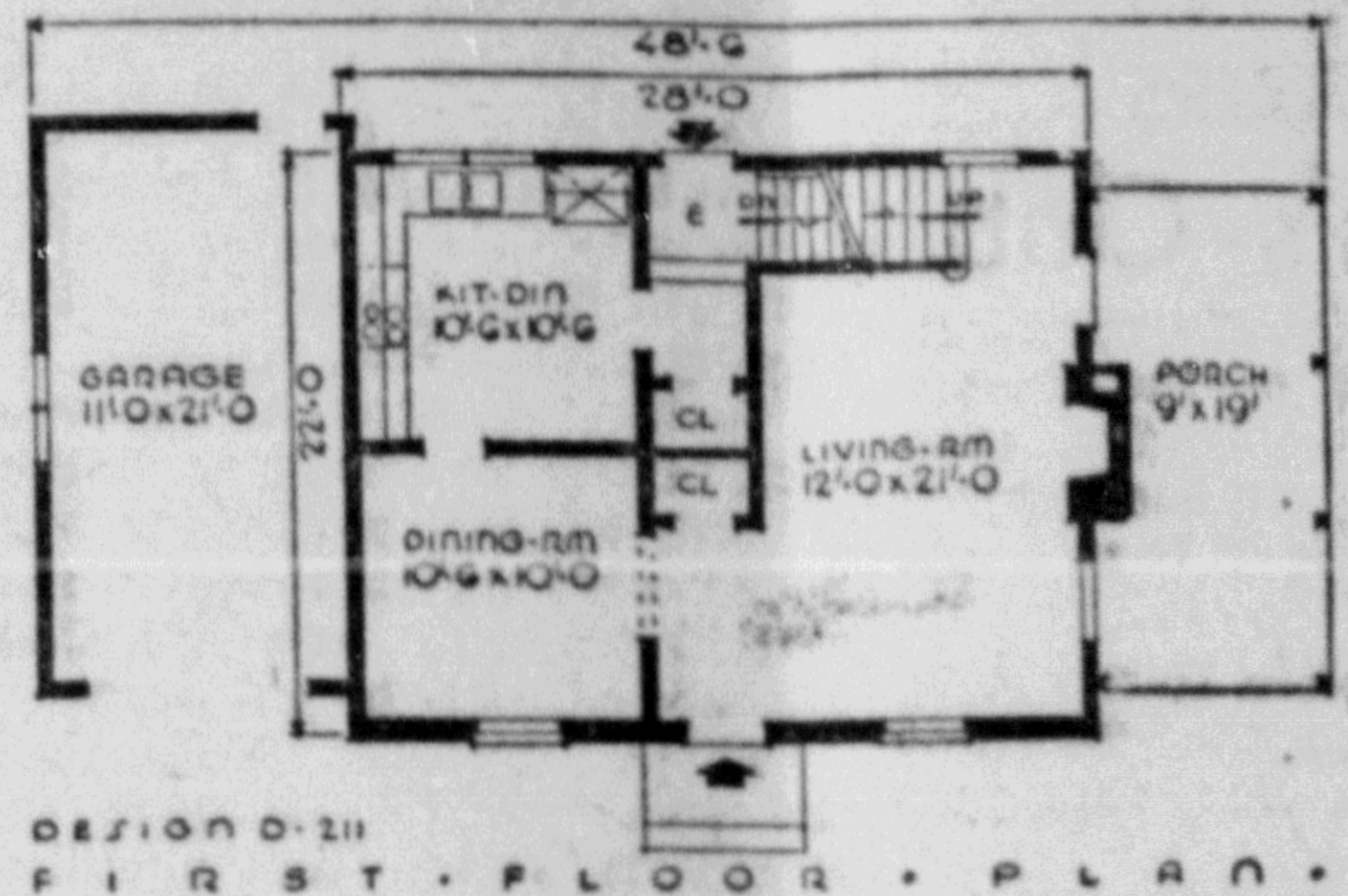
The decision to build a new, full-scale refinery in the Pacific Northwest was reached, Minckler stated, because of the assured supply of petroleum products it will give to the people of the region.

Minckler said the installation will eliminate the exposure of tankers hauling oil products up the Pacific Coast from California. It will give the region a "torpedo-proof" source of supply.

The 850-acre site near Ferndale, 12 miles south of the Canadian border, was chosen because "it provides the broadest possible benefits to all the people of the Pacific Northwest."

The refinery will have storage facilities for 2,000,000 barrels of crude and products and docking and loading facilities for ocean-going tankers.

Prince Rupert Daily News
Monday, December 8, 1952



THE DUNA is a story and a half colonial with three bedrooms on the first floor, two bedrooms and a bath on the second, an attached garage and a porch.

As shown, the dining room and living room are joined by a case opening, but the partition can be left out to form an L-shaped combination living-dining room.

Cabinets are placed on two walls to permit space for kitchen dining. The double compartment sink is under the rear windows, the refrigerator to the right and the range in the counter to the left.

The living room has light from three sides, an open stairway, fireplace and a coat closet, linen cabinet and walk in closets in the bedrooms.

Exterior finish includes brick facing on the lower front wall, with siding and asphalt shingles. Dimensions are 28 feet by 22, excluding porch and garage. Area is 616, cubage 15,400.

For further information about THE DUNA, write the Small House Planning Bureau of Canada, Box 1183, St. John, New Brunswick.

Many Problems Face Home Decorator When Planning For Color in Room

When planning for color in a room, or home, the home decorator will find a number of problems.

To meet them properly it is necessary to plan for continuity and surprise, and to relate each room to the next by carrying a unifying color from room to room.

Good paintings make fine sources of color combinations. Many rooms have been successfully keyed around a favorite painting, a vase, or a view from a window.

"Always remember," says Miss Eileen Cross of the University of British Columbia Department of Extension Home Economics Service, "that your home is your background and should express you."

Miss Cross has had a wide experience in home decorating and the use of color, and she has a number of "tips" for the home decorator.

Lighting will determine the colors and strength of colors you use. Rooms which no sunlight reaches must have sunlight added through color. Warm colors should be added to cool rooms, and cool colors to warm, sunny rooms.

If you want formality in your room use rich grayed colors and rich textured materials. For informality select clear bright colors, denoting friendship and cheer.

The feminine room will use soft pastels, and the masculine room will feature muted colors. A quiet, restful room is achieved by cool, soft muted colors such as soft blues or greens. Modernity is reached through the use of subdued background colors with vivid pure colors as contrasts and accents.

Furniture styles will influence your choice of color. Period furniture requires the subdued colors and textures of its era and modern furniture needs modern colors and modern textures.

The following rules for color distribution will prove of great help to a home decorator and are recommended by Miss Cross in her UBC Extension Department course:

1. The stronger the color intensity the smaller the area in which it should be used.
2. Rooms will appear more spacious if walls and woodwork are done in the same color.

3. Contrasting color on ceilings will make them appear lower.

4. Long narrow rooms are shorter if a contrasting color is used on one end wall.

Immigrants From UK Increase 46 Percent in First Ten Months

OTTAWA (CP)—A total of 146,236 immigrants reached Canada in the first 10 months of this year compared with 152,473 in the corresponding months of 1951, a drop of 6,237.

The figures were issued by the immigration department. It was the first time this year that the cumulative total dropped below the corresponding figure for 1951.

Highlight of the report for the 10-month period was a 46-per-cent increase in the number of immigrants from the United

Kingdom. Admissions to 36,637 compared with 25,000 in the same period last year.

Entries from the States were up 17 per cent, 7,904 compared with 6,727. European entries were 10 per cent higher at 57,472 compared with 55,875.

A FAULTY FURNACE CAN MAKE YOUR FUEL BILLS SOAR . . .

Let Us Overhaul Your Furnace Now . . . so you'll be ready when the southeasters roar.

Thom Sheet Metal LIMITED
253 First Ave. Phone Black 887

HANDYMAN HOME SERVICE

Painting and Decorating General Contractors

Building and Repair of all kinds.

P.O. Box 1670 Phone Red 894

NORTHWEST CONSTRUCTION LTD.

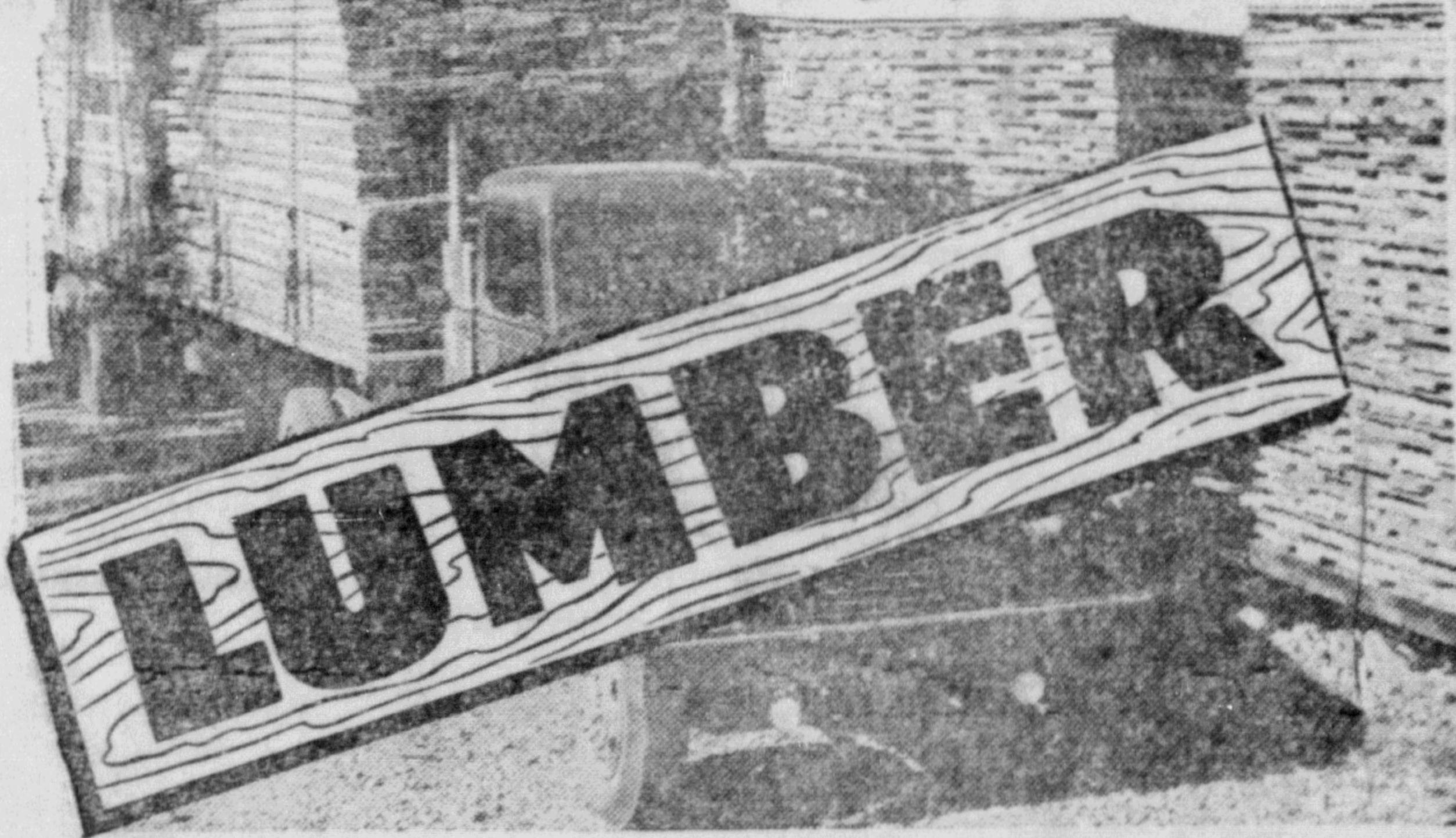
GENERAL CONTRACTORS

P.O. Box 1381

Prince Rupert

COMMERCIAL - INDUSTRIAL - DOMESTIC CONSTRUCTION and MAINTENANCE

HIGHEST GRADE SELECT



SASH - FRAMES - DOORS - MOULDINGS

FOR

YOUR LUMBER NEEDS

● KILN DRIED FIR

● MOULDINGS

● DOORS

● WINDOWS

● PLYWOODS

● COMMON SHIPLAP and DIMENSION

PHONE 651 OR 652

PHILPOTT, EVITT, & Co. Ltd.

"For Better Buys

In Builders Supplies"

High Taxation Threatening Industry, Says Business Head

QUEBEC (CP)—G. K. Sheils, president of the Canadian Manufacturers' Association, said here that high taxation is threatening the ability of Canadians to invest in their country.

He also warned of the possibility that higher tariff moves, especially in the United States, may operate against Canadian goods. Accordingly, he urged government measure "to see that adequate and proper safeguards are set up which can be enforced immediately to prevent the dumping of goods from other countries."

"By dumping I mean not only the interpretation under the present law, but also the dumping of goods on the Canadian market at less than cost of production plus a reasonable advance for selling cost and profit."

Mr. Sheils made his comments in a speech prepared for the Quebec City branch of the CMA.

He said corporation and personal income taxes are such that even Finance Minister Abbott has admitted they are too high.

"Yet, in disregard of repeated representations from business and industry, and despite unparalleled budget surpluses, he has, to date, done nothing about reducing them."

CORPORATIONS SUFFER
With foreign investors putting up 15 per cent of Canadian capital funds, the remaining 85 per cent "must come from our own pockets—from Canadian corporations, Canadian shareholders of these corporations and others."

"How long does the minister expect that these corporations and individuals can continue to find their 85-per-cent share of these investment funds if the government tax collector continues to take, on an average, \$2 from every Canadian corporation for every dollar that corporation pays its shareholders and then, in addition, demands a very heavy proportion of the shareholders' income?"

"What does the minister think will happen to our present healthy industrial expansion if and when this 85-per-cent Canadian capital investment is no longer forthcoming because of these drains upon its sources?"

The Nelson monument in Trafalgar Square, London, reaches 170 feet 1 1/2 inches from the ground.

SAANICH PLUMBERS

For all your Plumbing and Heating Needs

Phone Blue 846

Cor. McBride and Fifth Ave.

GRANTHAM Electric Electrical Contractors

★ NEW CONSTRUCTION

★ REWIRING OLDER BUILDINGS

844 Summit

Phone Blue 293

YOU CAN STOP HUNTING FOR THE BEST IN RUBBERIZED PAINTS

WE HAVE IT!

PITTSBURGH RUBBERIZED SATIN FINISH

TOUGH - LASTING - FREE-FLOWING - GOES FARTHER PER GALLON DRIES IN 20 MINUTES

Paint your room . . . two coats if desired . . . and in several colours . . . and you can move back all in the same day.

ISLAND CITY BUILDERS SUPPLIES

505 McBRIDE STREET

PHONE: BLUE 8



TIRED OF THAT DRAIN DRAIN DRAIN? It's only small, you know how annoying a drip can really be. In addition, continual leaking stains wall and ceilings, weakens plaster. Eliminate such nuisances now. Call licensed plumbers to avoid later difficulties.

YOUR Plumber is OUR Job—

Smith & Elms LIMITED

P.O. Box 274

Try Daily News Want Ads

MODERNIZE YOUR HOME

We can instal Picture Windows, Modern Stairways and Cupboards.



★ WHY NOT MAKE A BEDROOM OR PLAYROOM OUT OF THAT WASTE SPACE IN THE ATTIC? ★

See us for free estimates on all types of alterations.

Greer & Bridden Ltd.

Phone 999 215-1st Ave. West P.O. Box 100