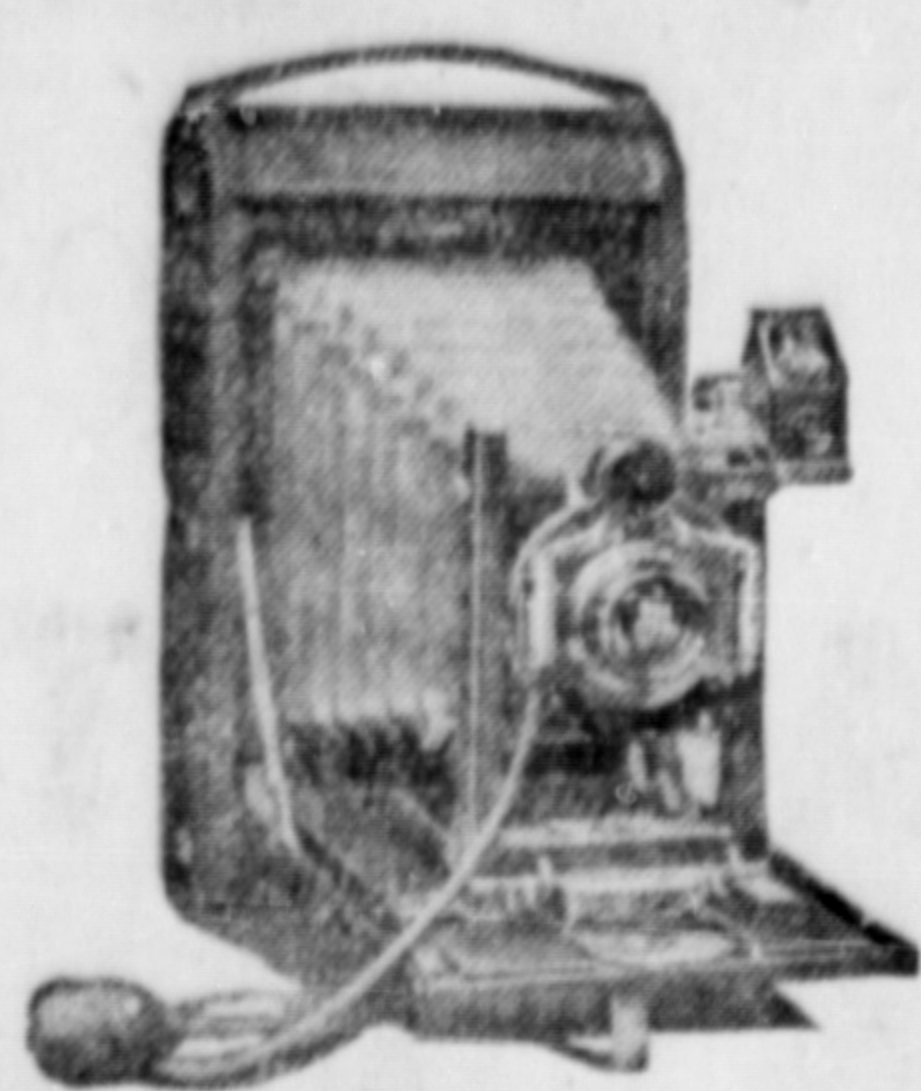


Let the KODAK  
catch the picture  
Auto Kodaks, \$6.50 up  
Brownies, \$2.00 up



**FINISHING**  
Fast note the tone, finish and detail in our prints.  
There's a difference. A trial will convince  
**ENLARGING**  
Our enlargements are second to none east or south.  
Prices same as charged by the Kodak Co. Then  
when you enlargement is made, we do  
**PICTURE FRAMING**

*McRae Bros. Ltd*

**Fancy Frozen  
Herring  
BAIT**

\$30.00 per ton

Canadian Fish & Cold Storage Co., Ltd.  
PRINCE RUPERT

**Canadian National Railways**

**GRAND TRUNK PACIFIC RAILWAY**  
WINTER SERVICE.

S.S. PRINCE GEORGE will leave Prince Rupert each Friday at 8 A.M. for Swanson Bay, Ocean Falls, Powell River, VANCOUVER, VICTORIA, SEATTLE.  
FOR STEWART AND ANYOX, Wednesday, 8 P.M.  
S.S. PRINCE JOHN, for North and South Queen Charlotte Islands, March 3, 17, 31.

**PASSENGER TRAIN SERVICE.**

Leave Prince Rupert daily except Sunday at 8:00 P.M. for Prince George, Edmonton, Winnipeg, direct connections all points Eastern Canada, and United States.

**AGENCY FOR ALL OCEAN STEAMSHIP LINES.**

City Ticket Office, 528 Third Ave., Prince Rupert. Phone 260.

**CANADIAN PACIFIC RAILWAY**  
B.C. Coast Services

**Sailings from Prince Rupert**

S.S. PRINCESS MARY.

For Vancouver, Victoria and Seattle, Thursday, Feb. 16, March 2, 16, 27.

For Ketchikan, Wrangell, Juneau and Skagway, Feb. 26, March 12, 23.

S.S. PRINCESS BEATRICE.

For Butedale, Swanson Bay, East Bella Bella, Ocean Falls, Namu, Alert Bay, Campbell River, and Vancouver, every Saturday at 1 p.m.

Agency for all Steamship Lines.

Full information from  
W. C. ORCHARD, General Agent.  
Corner of 4th Street and 3rd Avenue, Prince Rupert, B.C.

**WHY Buy a New Hat**

Why buy a New Hat when you can make your old one as good as new for 30c with

**ELKAYS STRAW HAT DYE**

Will color Straw, Leather, Wood, Raffan, Wicket, etc.

**SIXTEEN COLORS.**

Dull Black.	Brown.	Lavender.
Glossy Black.	Burnt Straw.	Natural.
Cadet Blue.	Cerise.	Old Rose.
Liberty Blue.	Gray.	Cardinal Red.
Navy Blue.	Sage Green.	Violet.
	Yellow.	

Guaranteed to be Wear Proof and Light-Proof. Readily applied and dries quickly.

Sold only by—

**ORMES LIMITED**

The Rexall Stores.

**Local and Personal**

B. C. Undertakers. Phone 41. 11

Mayners, Undertakers. Phone 351.

Mrs. A. R. Holby will not receive tomorrow, Wednesday.

A general borrowing bylaw for \$35,000 was given its first and second readings at last night's council meeting.

The 1923 indemnity law placing the salary of the mayor at \$1,500 and the aldermen, \$300 each, was given its first reading at last night's council meeting.

A report from Assessor McLennan on the assessment roll for 1923 was received and filed at last night's council meeting. Its contents were published last week.

The funeral of the late Thomas Albert Watkins, former keeper of Triple Island lighthouse, took place in Vancouver last Saturday afternoon, Rev. O. J. Nurse officiating.

A report from the city solicitor regarding the reduction in minimum water rate asked for by the Prince Rupert Lumber Co. was referred to the Finance Committee by the city council last night.

At a cost of about \$100 the city is to give an eight-inch water connection to the railway company at the corner of First Avenue and Eighth Street. A report from the Board of Works recommending to this effect was accepted by the council last night.

On account of the unfavorable weather conditions, it was impossible for Archdeacon G. A. Rix to sail for Metlakatla yesterday to officiate at the funeral of the late Mrs. Susan Leighton. The funeral is being deferred until the Archdeacon can make the passage.

The tug Bermuda sailed early this morning for Porecher Island to make an attempt at the high tide at 10:30 to haul the grounded Swanson Bay car ferry off the beach. If the attempt is successful, the Bermuda will arrive in port with her tow late this afternoon.

The city council is to ask the secretary of the school board for a report on the list of policies, names of agents and amount of premiums paid for fire insurance on the schools. A report from the Finance Committee recommending this was adopted by the council last night.

C. Lundquist, contractor for rough grading on Fourth and Fifth Avenues, Section 5, has requested the city council for a further 30 days extension of time in view of the fact that weather conditions have held up the work. The matter has been referred to the Board of Works for report.

Purchase of various supplies for the year by the Board of Works was authorized by the city council last night. Among the firms who will sell material to the city are Steens, Ltd., Balfour & Guthrie, Robertson & Godson, Smith & Mallett, Howe & McNulty, Albert & McCaffery and Thompson Hardware.

**OLD COUNTRY BOOKING OFFICE.**  
Ocean Steamship Tickets All Lines.  
Passports Secured.  
Write or Call—  
R. F. McNaughton,  
District Passenger Agent,  
Can. National Ry.  
Prince Rupert, B.C.  
Phone 260.

**SANTAL MIDY**  
Easy to Take—Quick to Relieve  
CATARRH of the BLADDER  
Safe, Successful  
Each Capsule bears name MIDY  
Beware of counterfeits

**HEART PALPITATED  
and Was Short of Breath**

Through one cause or another a large majority of people are troubled, more or less, with some form of heart trouble. Many people may be unaware of having anything wrong with their heart till some little excitement, over-work or worry starts it to palpitate and throb, skip beats, beat fast for a time and then so slow as to seem almost to stop, then it causes great anxiety and alarm.  
To all such sufferers

**Milburn's  
Heart and Nerve Pills**

will give prompt and permanent relief. Mrs. Alice Bishop, 15 Hawthorne Ave., Hamilton, Ont., writes: "I take pleasure in recommending Milburn's Heart and Nerve Pills to all persons troubled as I had been."

I suffered from palpitation of the heart and shortness of breath; my heart would skip beats, and in the night, at times, I would have to sit up to get my breath. I could not go up stairs without my heart fluttering, and my nerves were all unstrung, but since using your famous Pills I have felt like a different person."

Price 50c a box at all dealers or mailed direct on receipt of price by The T. Milburn Co., Limited, Toronto, Ont.

W. H. Tobey, C.N.R. divisional engineer, left for Prince George on last night's train.

Joe McPhee is back from a holiday trip to Vancouver, Victoria and Seattle. To-night he sails on the Venture to resume his position as customs officer at Butedale.

Canon Vernon, general secretary of the Anglican council of social service for Canada, left on last night's train for Toronto after having visited this city and Vancouver.

A letter from J. Harris, of the Atlas Boiler Works, announcing that the price of steel to be used in the construction of the Hays Creek bridge had advanced was received by the city council last night and referred to the Board of Works.

Rev. and Mrs. W. J. Parsons and their son, of Terrace, are leaving Terrace on tonight's train for Rochester, Minnesota, where Mrs. Parsons will receive treatment at the Mayo Clinic. Mr. Parsons is the Presbyterian minister at Terrace.

Mr. and Mrs. A. M. Brenner and family were passengers leaving the city for Calgary on last night's train. Mr. Brenner, who has been chief draughtsman to W. S. Featherstonhugh in the C.N.R. district engineer's office here, is being transferred to Calgary with his chief.

**EPISCOPAL MISSIONS  
MAY HAVE TO CLOSE**

NEW YORK, Feb. 27.—Possible closing of missionary stations in various parts of the world and general curtailment of Episcopal Church activities in the United States were forecast in a report issued by the National Council of the Church showing a deficit of \$399,078.30 for 1922. An appeal has been made to missionary bishops and heads of church agencies and institutions for rigid economy. Gross income for general purposes in 1922 was \$3,248,407.49 and the estimated expenditures \$3,646,485.79, leaving an estimated deficit of \$399,078.30. The figures in 1921 were \$3,688,581 received and \$3,513,996 disbursed.

**X-RAY INSTRUMENT  
OR TESTING CHEESE**

NEW YORK, Feb. 27.—The success of the Swiss cheese industry of America has been saved by the X-ray.

The greatest problem of the industry, according to Professor W. F. Whitmore, of Brooklyn Polytechnic Institute, was: "How can it be determined, without cutting open the cheese, when the holes are of proper size?"

Scientists made an X-ray photograph of a cheese. The holes developed in the negative as distinct dark spots.

**HOTEL ARRIVALS**

Prince Rupert  
Bert Creech, Vancouver; W. S. Bricken, Winnipeg; C. J. Ketylo, Endako; A. Gornorton, Digby Island.

Subscribe for the Daily News.

**COMMONS TO DEAL  
WITH ESTIMATES  
TWO DEPARTMENTS**

OTTAWA, Feb. 27.—Today in Parliament the House of Commons will go into committee of supply on the estimates of the department of soldiers civil re-establishment, department of health and department of justice in the order named.

**LONDON JOURNAL  
PRINTS ARTICLE  
ON B.C. SALMON**

A special description of the British Columbia salmon fishing and canning industry which proves particularly interesting locally appears in a recent number of "The Mining Journal," published in London, England. The article contains a directory of all the salmon canning firms on the coast, descriptions of the various species, their comparative food values, their lives and processes of canning.

**MADE LARGEST ANCHOR**

CHESTER, Pa., Feb. 27.—The American Steel Foundries here completed what is declared to be the largest anchor ever made in this country. It weighs 33,300 pounds and is wrought of cast steel. It was built for the Leviathan, which is in drydock at Newport News, Va.

Ordinary anchors for vessels weigh from six to ten thousand pounds.

Mabel—Bill's filing his old love letters.  
Lizzie—Were they as rough as that?

—Vaudeville News.

**FULLER'S SPECIALS**

Quaker Corn,	15c.
Quaker Tomatoes,	15c.
Pineapple, tin,	30c.
Peaches, tin,	25c.
Jap Rice, lb.	7c.
Sweet Biscuits, lb.	25c.
Swift's Bacon, lb.	45c.
Whole Green Peas, lb.	5c.
Brookfield Eggs, in carton per dozen	40c.
New Laid Eggs doz.	60c.
Acadia Cod, 2 lb. box,	50c.
Salt Sodas, pkge.	20c.
Gylfe Cleanser, tin	15c.
Comb Honey	30c.
Creamery Butter	50c.
Royal Crown Cleanser, 3 for	25c.

My Computing Scale at Prudhomme's butcher shop for sale cheap. Call and see it.  
Phone 45.

**LENTEN SUGGESTIONS**

Pimento Cheese.  
Romanello Cheese.  
Genuine Swiss Cheese.  
Jack Cheese.  
Edam Cheese.  
Prim Ost or Whey Cheese.  
Gouda Cream Cheese.  
Mushrooms.  
Tuna Fish.  
Anchovies Salted.  
Anchovies in Oil.  
Garnishola Pimento.  
Tomato Paste, equal to five tins tomatoes.  
Ripe Olives.  
Napoleon Olive Oil.  
Fancy Sausages.  
20 Shapes Macaroni.

**ALBERTA MARKET**  
Fifth Street

\*\*\*\*\*  
TOO LATE TO CLASSIFY  
\*\*\*\*\*  
WANTED.—Woman cook. Apply Prince Rupert Boathouse.

\*\*\*\*\*  
ANNOUNCEMENTS  
\*\*\*\*\*

Ladies of the Royal Purple Annual Easter Sale of Work and Home Cooking, Tuesday, March 27, Elks' Home.



**Dress All Your  
CUTS & SORES  
WITH ANTISEPTIC  
Zam-Buk**



You buy food that is clean and pure. You serve food on clean, spotless china. But do you cook food in clean pots and pans? SMP Enameled Ware pots and pans are Clean! And Pure! And Spotless! The surface is just like china. Just as pure and as clean.

Clean! Dirt or germs cannot hide on that hard, smooth surface. After cooking, no matter how greasy or how sticky, your SMP Enameled pots and pans come out of the dishpan clean. As smooth and clean as a new-washed plate. Hot water and soap does it.

Note the trade-mark. The letters SMP in a shield shape. You will see this trade-mark only on good enameled ware. Look for it. Ask your local hardware merchant for

**SMP Enameled WARE**

Three finishes: Pearl Ware, two coats of pearly grey enamel inside and out. Diamond Ware, three coats, light blue and white outside, white lining. Crystal Ware, three coats, pure white inside and out, with Royal Blue edging.

The Sheet Metal Products Co. of Canada Limited  
Montreal Edmonton TORONTO Vancouver Winnipeg Calgary

Local Agent—Thompson Hardware Co., Third Avenue

**FISHERMEN!**

New Season's  
**FROZEN HERRING BAIT**  
Just Frozen—Beautiful Quality  
**NEW ENGLAND FISH Company**  
Ketchikan, Alaska Branch

**DENTISTRY; X-Ray Service**

The only reliable and scientific method of knowing the exact condition of the teeth and surrounding bony structure.

**DR. BAYNE**

Office Hours: 9-6. Tues., Thurs., Sat. Evenings 7-9  
Dental Nurse Always in Attendance.

Rooms 4, 5, 6, Helgerson Bldg. Phone 106.

**PURITY FLOUR and B. & K. Pastry Flour**

The quality is always of the same high standard. All Grocers sell PURITY and B. & K. PRODUCTS  
Brackman-Ker Milling Co., Ltd.

**UNION STEAMSHIP COMPANY OF B.C., LTD.**

Sailings from Prince Rupert.  
For Vancouver, Victoria, calling at Swanson Bay, Ocean Falls, Tuesday 6 P.M.  
For Port Simpson, Naas River, Anyox and Alice Arm, Sunday Midnight.  
Calling at Oceanic and Naas Harbour on sailings, Jan. 21, Feb. 4, 18, Mar. 4, 18.  
Calling at Somerville, Kumeon, and Mill Bay on sailings, Jan. 28, Feb. 11, 25, Mar. 11.  
623 Second Avenue. JACK BARNESLEY, Agent. Prince Rupert, B.C.

Advertise in "The Daily News"  
THE PAPER THAT GETS QUICK RESULTS