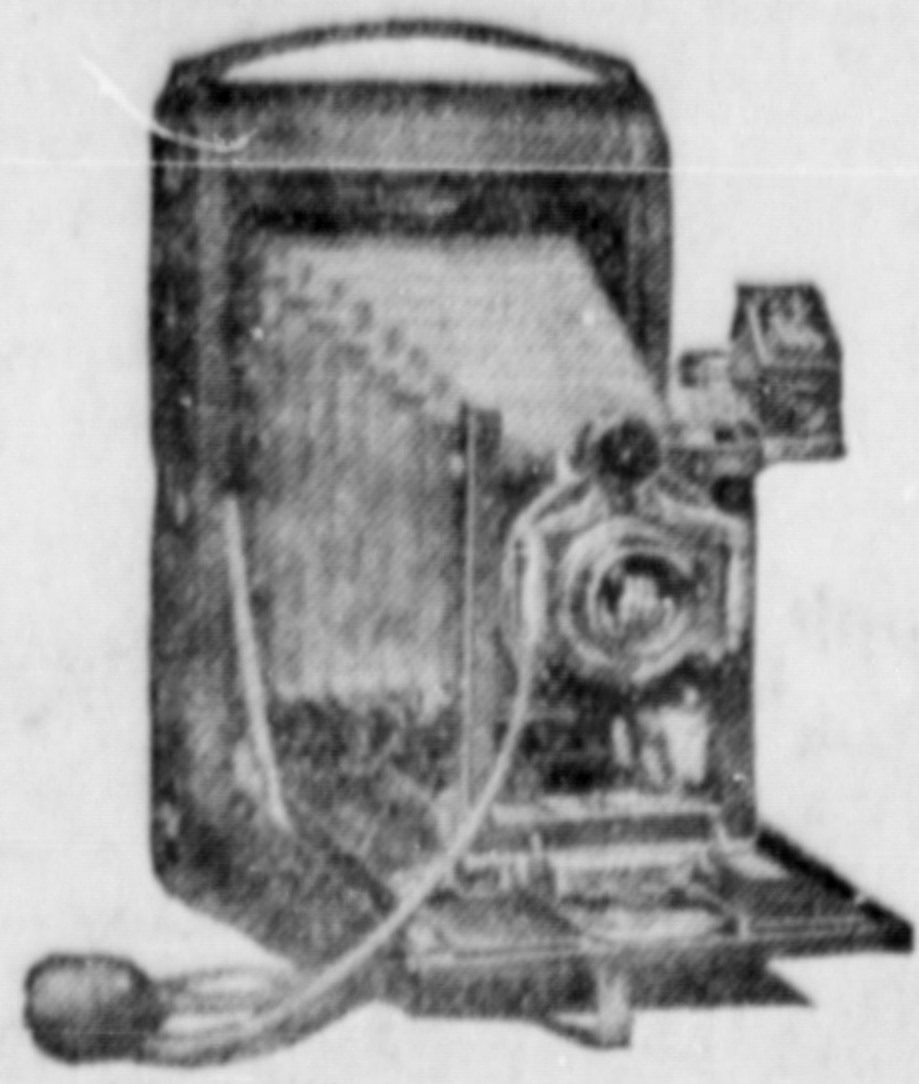


Let the KODAK catch the picture
Auto Kodaks, \$6.50 up
Brownies, \$2.00 up



FINISHING
Just note the tone, finish and detail in our prints.

There's a difference. A trial will convince
ENLARGING
Our enlargements are second to none east or south.
Prices same as charged by the Kodak Co. Then
when you enlargement is made, we do
PICTURE FRAMING

McRae Bros. Ltd

Six-Year-Old Had Bronchitis Every Winter

Bronchitis generally begins with chills, followed by fever and a harsh, dry, hacking cough. There is a raising of phlegm, which at first is of a light color, but, as the trouble progresses it becomes of a yellowish or greenish color and is sometimes streaked with blood.

All those who are troubled with bronchitis will find in Dr. Wood's Pine Syrup a remedy that will stimulate the bronchial organs, subdue the inflammation, soothe the irritated parts, and loosen the phlegm.

Mrs. Oliver C. LePage, South Ruston, P. E. I., writes:—"My little six-year-old girl had very bad attacks of bronchitis every winter. In the evening and during the night, she would have fever and choke up, and had a wheezing in her chest. We tried several cough medicines, but they never seemed to do her any good. A neighbor advised us to try Dr. Wood's Norway Pine Syrup, which we did, and after she had taken two bottles she got perfectly well."

Price 50c and 60c a bottle; put up only by The T. Milburn Co., Limited, Toronto, Ont.

Local and Personal

B. C. Undertakers. Phone 41. **tt**
Hayners, Undertakers. Phone 351. **tt**

The Central Hotel orchestra repeated its concert of last week in the dining room of the hotel last evening.

John Willman, president of the Klenna Mining Co., of Esk, is a visitor registered at the Hotel Prince Rupert.

Mrs. J. Lambie with a purchase of \$5.50 won the box of chocolates at Ormes Branch Drug Store on Saturday.

A recent Vancouver Province carried a picture of the Triple Island lighthouse with an inset of Thomas Watkins, the late keeper, who passed away last month.

E. Christopherson, found guilty of intoxication, was fined \$50 with the option of thirty days imprisonment by Magistrate McClymont in the police court this morning.

Judging from the wireless reports, the storm raging here today would seem to be a local one. Dead Tree Point and Bull Harbor report light winds and smooth sea.

The fire department had a call at 7:45 this morning to the residence of George W. Kerr, Borden Street. A chimney fire was extinguished with no damage being done.

BUSINESS MEN! Reliable person has \$500 to \$1,500 to invest in business capable of being developed. Would expect to take active interest. Submit particulars to P.O. Box 1556.

Fred Stork, M.P. for Skeena, is a member of the redistribution committee which was recently struck by the federal government. Hon. Dr. H. S. Beaud will probably be the chairman.

See the wreck many store windows this week! Then watch for its restoration a few days later. H. H. Hemmings, Auctioneer, Furniture packer, repairer and shipper. Denny Allen's Old Store.

The Union steamer Venture, Capt. A. Johnston, arrived at midnight last night from Vancouver and wayports sailing shortly afterwards for Anyox, Alice Arm and Naas and Skeena River ports.

Mrs. R. L. Midforth, who has been visiting in the city for several days with her sister, Mrs. Thomas McClymont, leaves on tonight's train for her home in Winnipeg. She will stop off at Edson enroute.

R. H. Leighton, forest supervisor from Hazelton, G. G. Armitage, ranger from Ocean Falls and G. W. Henning, Swanson Bay, are in the city in connection with a court case which is being heard here.

W. H. Schmidt, representing Puget Sound cannery interests, sails today on the Princess Mary for Wrangell. He has been looking over fishing prospects in this district having arrived recently from Massett Inlet.

The list of provincial incorporations gazetted this week in Victoria includes that of Jamieson & Frost, Ltd., capital \$25,000, of Buckley Bay. The new company is engaged in logging for the Massett Timber Co., Ltd.

Major R. M. Taylor, the new district public works engineer, returned to the city last night after making his first trip to the interior. He went as far as Smithers and expresses himself as much pleased with the appearance of the district. There is much activity in the tie and pole cutting industry.

A mooring buoy has been put in position at Stewart 1200 feet northwards from the outer end of the Government wharf and 500 feet from the west shore of the harbor. It is in 47 fathoms of water and will be maintained by the Coastwise Steamship and Barge Co. to moor vessels when waiting to get a berth at the wharf.

BANQUET TONIGHT TO CAPTAIN NICHOLSON

Sketch of Life of Former Manager of the Coast Service Proves Interesting

VICTORIA, Feb. 26.—Officials of the C.G.M.M. and Canadian National Railways are giving a banquet at Vancouver tonight in honor of Captain C. H. Nicholson, former manager of the Grand Trunk steamers. Several members of the local staffs crossed for the occasion. The scene of the dinner will be the steamer Prince George, a vessel that was built under Captain Nicholson's supervision and for fourteen years under his management.

Captain Nicholson's life has been a real romance. He began his career at sea as a cabin boy, and now goes East to assume the double burden of manager of the Canada Atlantic Transit Company and the Ontario Car Ferry Company. He began his long and varied experience in the steamship business as a cabin boy with the Richelieu and Ontario Navigation Company in 1881. In 1882 he entered the service of the late C. F. Gildersleeve, of Kingston, Ont., operating steamers on the St. Lawrence River, Bay of Quinte and Lake Ontario, eventually the positions of purser, mate, and master.

Commands Vessels
He commanded the steamers Hero, Hastings, Norseman, North King and other vessels. In 1892 he was appointed general freight and passenger agent on the merging of the Gildersleeve interests into the Lake Ontario and Bay of Quinte Steamship Company, holding that position until 1894, when he took charge of the interests of that company on the American side, being located at Rochester, N.Y.

In 1903 he was appointed general manager of the Muskoka Lakes Navigation Company, and in 1904 traffic manager of the Northern Navigation Company, having charge of operation of the Lake Superior division. In 1906 he was appointed manager of the Grand Trunk Pacific Coast Steamship Company, with headquarters at Vancouver, a position which he has continued to hold until the present time.

Edward Lipsell arrived on the Princess Mary this afternoon from Vancouver and will be here a week on business.

When you buy advertising you buy CIRCULATION, and see that you get it **tt**

OLD COUNTRY BOOKING OFFICE.

Ocean Steamship Tickets All Lines.

Passports Secured.

Write or Call—

R. F. McNaughton, District Passenger Agent, Can. National Bys., Prince Rupert, B.C., Phone 260.

MACDONALD'S BRIER



The Tobacco with a heart

For those smokers who like their tobacco Cut Fine or who roll their own MACDONALD'S Fine Cut

1/2 lb. **80¢** - Canada's Best Buy - THE ECONOMY PACKAGE
(ALSO PROCURABLE IN PACKAGES 15¢ & 25¢)

J. W. Potter, who with Mrs. Potter left here recently for Seattle, has gone on south to California and will be located at Los Angeles for a while.

The C.P.R. steamer Princess Mary, Vancouver for Skagway and wayports, arrived at 1:30 this afternoon from the south clearing for the north at 2:30.

WIRELESS REPORT

DIGBY ISLAND. — Raining, southeast gale; barometer, 30.10; temperature, 36; sea rough; 11:45 p.m. steamer Venture passing in northbound.

DEAD TREE POINT.—Cloudy, light south-west wind; barometer, 29.90; temperature, 42; sea smooth.

BULL HARBOR. — Cloudy, calm; barometer, 30.48; temperature, 44; light swell; 9:05 p.m. spoke steamer Jefferson entering Millbank Sound northbound; 9:25 a.m. spoke steamer Canadian Volunteer ahead Cape Galvert bound for Ocean Falls.

NOON
DIGBY ISLAND. — Raining, southeast gale; barometer 30.07; temperature, 41; sea rough; Princess Mary due in 1:30 p.m. northbound.

DEAD TREE POINT.—Raining, light southwest wind; barometer, 29.93; temperature, 44; sea smooth.

BULL HARBOR. — Overcast; calm; barometer, 30.44; temperature, 46; light swell; 9:30 a.m. spoke steamer Anyox ahead Egg Island at 8 a.m. northbound.

FULLER'S SPECIALS

- Quaker Corn, 15c.
- Quaker Tomatoes, 15c.
- Pineapple, tin, 30c.
- Peaches, tin, 25c.
- Jap. Rice, lb., 7c.
- Sweet Biscuits, lb., 25c.
- Swift's Bacon, lb., 45c.
- Whole Green Peas, lb., 5c.
- Brookfield Eggs, in carton per dozen 40c.
- New Laid Eggs doz., 60c.
- Acadia Cod, 2 lb. box, 50c.
- Salt Sodas, pkge., 20c.
- Glyse Cleanser, tin, 15c.
- Comb Honey, 30c.
- Creamery Butter, 50c.
- Royal Crown Cleanser, 3 for 25c.
- My Computing Scale at Prudhomme's butcher shop for sale cheap. Call and see it. Phone 45.

LENTEN SUGGESTIONS

- Pimento Cheese.
 - Romanello Cheese.
 - Genuine Swiss Cheese.
 - Jack Cheese.
 - Edam Cheese.
 - Prim Ost or Whey Cheese.
 - Gouda Cream Cheese.
 - Mushrooms.
 - Tuna Fish.
 - Anchovies Salted.
 - Anchovies in Oil.
 - Garnishola Pimento.
 - Tomato Paste, equal to five tins tomatoes.
 - Ripe Olives.
 - Napoleon Olive Oil.
 - Fancy Sausages.
 - 20 Shapes Macaroni.
- ALBERTA MARKET Fifth Street

ANNOUNCEMENTS
Ladies of the Royal Purple Annual Easter Sale of Work and Home Cooking, Tuesday, March 27, Elks' Home.

Fancy Frozen Herring BAIT

\$30.00 per ton
Canadian Fish & Cold Storage Co., Ltd.
PRINCE RUPERT

Canadian National Railways

GRAND TRUNK PACIFIC RAILWAY WINTER SERVICE.

S.S. PRINCE GEORGE, will leave Prince Rupert each Friday at 8 A.M., for Swanson Bay, Ocean Falls, Powell River, VANCOUVER, VICTORIA, SEATTLE.

FOR STEWART AND ANYOX, Wednesday, 8 P.M.

S.S. PRINCE JOHN, for North and South Queen Charlotte Islands, March 3, 17, 31.

PASSENGER TRAIN SERVICE.

Leave Prince Rupert daily except Sunday at 8:00 P.M. for Prince George, Edmonton, Winnipeg, direct connections all points Eastern Canada, and United States.

AGENCY FOR ALL OCEAN STEAMSHIP LINES.
City Ticket Office, 528 Third Ave., Prince Rupert. Phone 260.

CANADIAN PACIFIC RAILWAY B.C. Coast Services

Sailings from Prince Rupert

S.S. PRINCESS MARY.

For Vancouver, Victoria and Seattle, Thursday, Feb. 16, March 2, 16, 27.

For Ketchikan, Wrangell, Juneau and Skagway, Feb. 26, March 12, 23.

S.S. PRINCESS BEATRICE.

For Butedale, Swanson Bay, East Bella Bella, Ocean Falls, Namu, Alert Bay, Campbell River, and Vancouver, every Saturday at 1 p.m.

Agency for all Steamship Lines.
Full information from
W. C. ORCHARD, General Agent,
Corner of 4th Street and 3rd Avenue, Prince Rupert, B.C.

WHY Buy a New Hat

Why buy a New Hat when you can make your old one as good as new for 30c with

ELKAYS STRAW HAT DYE

With color Straw, Leather, Wood, Ballan, Wickel, etc.

SIXTEEN COLORS.

Dull Black.	Brown.	Lavender.
Glossy Black.	Burnt Straw.	Natural.
Cadet Blue.	Cerise.	Old Rose.
Liberty Blue.	Gray.	Cardinal Red.
Navy Blue.	Sage Green.	Violet.
	Yellow.	

Guaranteed to be Wear Proof and Light-Proof. Readily applied and dries quickly.

Sold only by—
ORMES LIMITED
The Rexall Stores.

FISHERMEN!

New Season's
FROZEN HERRING BAIT
Just Frozen---Beautiful Quality
NEW ENGLAND FISH Company
Ketchikan, Alaska Branch



PURITY FLOUR and B. & K. Pas'y Flour
The quality is always of the same! high standard. All Grocers sell PURITY and B. & K. PRODUCTS
Brackman-Ker Milling Co., Ltd.



You buy food that is clean and pure. You serve food on clean, spotless china. But do you cook food in clean pots and pans? SMP Enameled Ware pots and pans are Clean! And Pure! And Spotless! The surface is just like china. Just as pure and as clean.

Clean! Dirt or germs cannot hide on that hard, smooth surface. After cooking, no matter how greasy or how sticky, your SMP Enameled pots and pans come out of the dishpan clean. As smooth and clean as a new-washed plate. Hot water and soap does it.

Note the trade-mark. The letters SMP in a shield shape. You will see this trade-mark only on good enameled ware. Look for it. Ask your local hardware merchant for

SMP Enameled WARE

Three finishes: Pearl Ware, two coats ofpearly grey enamel inside and out. Diamond Ware, three coats, light blue and white outside, white lining. Crystal Ware, three coats, pure white inside and out, with Royal Blue edging.

The Sheet Metal Products Co. of Canada Limited
Montreal Toronto Vancouver
Edmonton Winnipeg Calgary