

YOU WANT THE FINEST CANNED SALMON

# "Rupert Brand"

Selected  
**Skeena Sockeye**

For picnics, choose "Rupert Brand" Salmon. A few tins in the pantry are always handy. Stock a supply on your boat—that's a good idea.

**SOLD EVERYWHERE.**

Canadian Fish & Cold Storage Co., Ltd.  
Prince Rupert, B.C.

**CANADIAN PACIFIC RAILWAY**  
B.C. Coast Services

Sailings from Prince Rupert  
PRINCESS ALICE — PRINCESS MARY  
For Vancouver, Victoria, and Seattle—  
October 7, 17, 28  
For Ketchikan, Wrangell, Juneau, Skagway—  
October 3, 13, 24  
S.S. PRINCESS BEATRICE.  
For Butedale, Swanson Bay, East Bella Bella, Ocean Falls, Namu, Alert Bay, Campbell River, and Vancouver, every Saturday, 11 a.m.  
Agency for all Steamship Lines  
Full information from  
W. C. ORCHARD, General Agent  
Corner of 4th Street and 3rd Avenue, Prince Rupert, B.C.

**UNION STEAMSHIP COMPANY OF B.C., LTD.**  
Sailings from Prince Rupert.  
VANCOUVER, VICTORIA, Swanson Bay, and Alert Bay, Tuesday, 5 P.M.  
VANCOUVER, VICTORIA, Alert Bay, and Swanson Bay, Saturday, 10 A.M.  
ANYOX, ALICE ARM, STEWART, Sunday, 8 P.M.  
ANYOX, PORT SIMPSON and Nasa River Canneries, Friday A.M.  
2nd Avenue. J. Barnsley, Agent. Prince Rupert, B.C.

FREE DELIVERY IN PRINCE RUPERT

"Cascade" is BETTER BEER

## Hops and Malt— The Very Best— Brewed Right—

This crown is the seal of "Cascade" quality—look for it on every bottle of genuine "Cascade" Beer.

Pour a glass of "Cascade"—see the rich creamy foam come to the top—note the way it sparkles—the clear, amber color—breathe in the pungent, appetizing smell of the malt and hops—taste it, and your palate will tell you why "Cascade" has always been the BETTER BEER. The difference is in the brewing. For the making of "Cascade" we have secured the services of a brewmaster with a lifelong experience in brewing the very finest of beers. We have set up a plant second to none in the West—we have spared no pains or expense to give the public BETTER BEER—beer that is as near perfection as human hands and brains can make it—

# Cascade

PALE

"The Beer without a Peer"

Insist on "Cascade" if you want the best—it costs no more. Sold at all Government Liquor Vendors.

VANCOUVER BREWERIES LIMITED

This advertisement is not published or displayed by the Liquor Control Board or by the Government of British Columbia.

### CLOSE CALL OF PRINCE JOHN

Passengers Had Nervous and Unpleasant Time Drifting up Coast on Wednesday

According to passengers who were aboard the vessel at the time, the steamer Prince John came nearer to disaster last Wednesday when she was disabled at Browning Entrance than was generally believed. It was 7 o'clock in the morning when the oil pump gave out and it was close to five in the afternoon when the vessel finally got under way again. The water at the point where the trouble arose and the steamer was forced to stop was very deep but the anchor, with a long line, finally touched bottom. It did not hold, however, and one passenger yesterday afternoon said that the vessel drifted forty miles from the north end of Banks Island to Stephens Island and, if the machinery had not been started when it was, the ship very soon might have been ashore. There was a strong southeast wind and the boat wallowed all day in the trough of mountainous seas.

All in all, it was not a very pleasant trip for the passage across Beate Straits Tuesday night had also been very rough. Most everybody was seasick and especially below in the steerage, where there were 65 Chinamen, were things uncomfortable. Capt. Neil McLean and his officers, navigators of long experience in the oft-times troublous waters between here and the Queen Charlotte Islands, retained their "sang-froid" but the passengers were apparently nervous and it was with some relief that the ship was brought into port at midnight Wednesday and they were able to disembark and tell all and sundry that it was a trip the like of which they would not care to experience again.

Advertise in the Daily News.

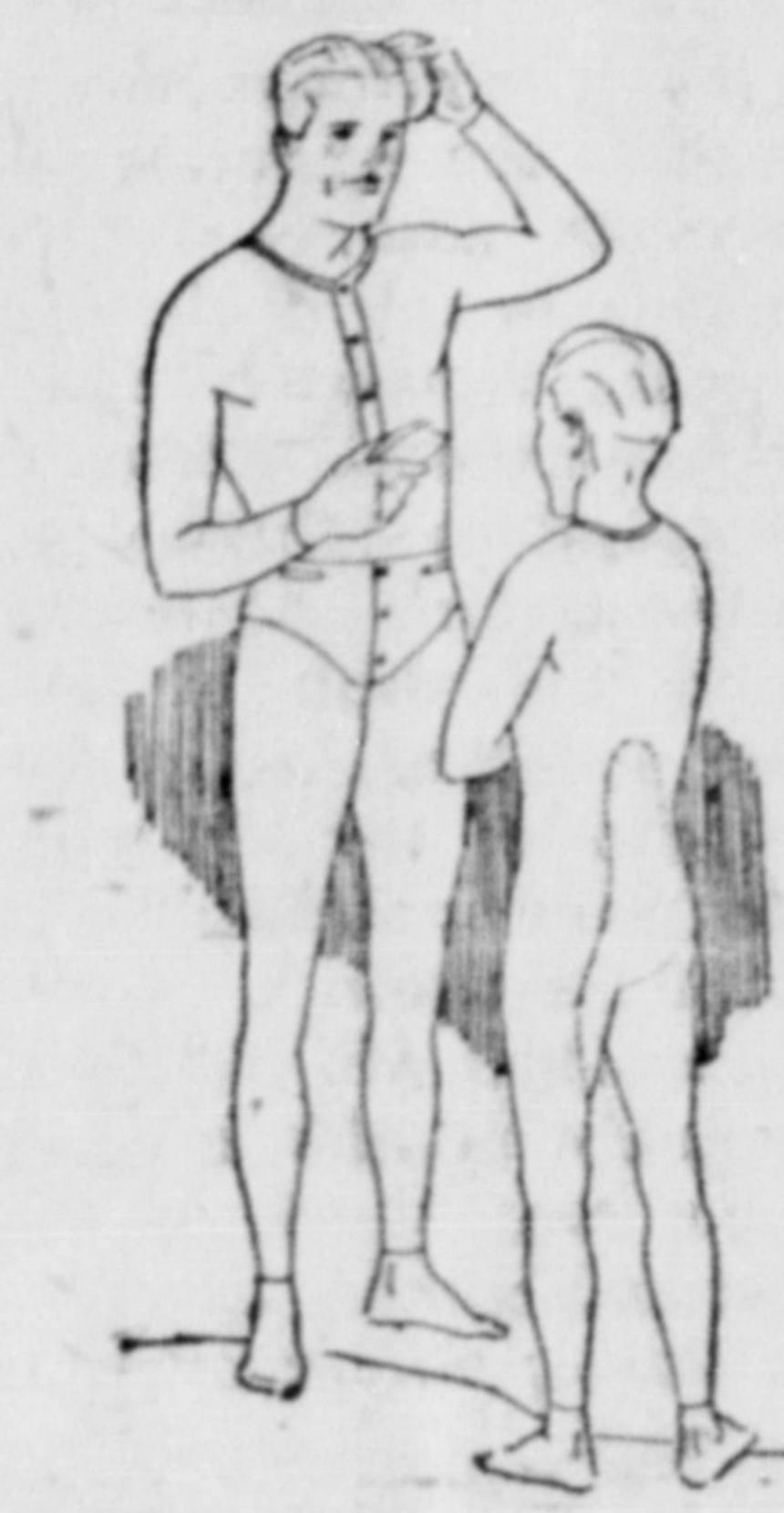
## If you bought underwear tailored to your measure—

Three illustrated booklets showing Stanfield's wide range of styles and weights in men's, women's and children's underwear will be mailed on request. Write for them.

STANFIELD'S LIMITED  
TRURO, N.S.



No. 7500—Moderately heavy natural Combinations (Sizes 34-44) at \$5.50. Also Shirt and Drawers, \$3.50 per garment.



No. 3200—Men's natural Shirt and Drawers, medium weight (Size 34-44), \$2.50 per garment. Also Combinations at \$3.50.  
No. 5000—Boys' Natural Combinations, medium weight (Size 24-28), at \$2.25.  
Also Shirt and Drawers, (Size 30-34), at \$2.75.



BE COMFORTABLE THIS WINTER—WEAR STANFIELD'S



—you couldn't get a better fit

STANFIELD'S great range of sizes and proportions enables any man of any build to get a suit of underwear that fits just right—snugly and comfortably. It's cut and tailored to fit perfectly—won't bulge at the back of the neck or bind in the crotch.

Stanfield's will not shrink! You don't have to buy a larger size than you'd ordinarily wear and "allow for shrinking." Stanfield's fits when you first put it on and with ordinary care in washing according to our directions, it will stay that way, as long as you wear it. And it stands strenuous wear.

There are fabrics and weights in Stanfield's for every man

Stanfield's is made in all grades and weights: Pure Virgin Wool, Silko-Wool and mixtures of Wool and Silky Cotton. Whether you work indoors or out, you'll find there's a Stanfield's weight especially suited for you. And while our prices range to suit every purse, you'll find but one high standard of making all through—full, generous cut—no skimping, seams that lie flat, buttons that are sewn on to stay. This careful making is a part of every Stanfield's garment, from the lowest price to the most expensive.

Be careful to select the size that fits you perfectly. There's a size, style and weight of Stanfield's for every member of every family, priced from \$1 to \$10.

# STANFIELD'S Unshrinkable UNDERWEAR

### BISHOP OF KOOTENAY EXTENDS CONDOLENCES

Rt. Rev. Alexander J. Doull Wires From Montreal to Archbishop G. A. Rix

Rt. Rev. Alexander J. Doull, Bishop of Kootenay, who is at present in Montreal, sends the following telegram to Archbishop G. A. Rix extending condolences to the family of the late Archbishop Du Vernet and this diocese:

"Your telegram received in Montreal. I am deeply distressed to hear of the death of the Archbishop. The whole church mourns his loss. Please convey to Mrs. Du Vernet and family my truest sympathy. The diocese of Kootenay mourns for the diocese of Caledonia. God bless and comfort you."

### FISH ARRIVALS

Halibut Prices Were Lower at Exchange This Morning—Six Boats Sold 68,000 Pounds

Halibut bids at the Fish Exchange this morning dropped considerably from the heights around which they have been soaring lately. Five American boats marketed 68,000 pounds and a single Canadian vessel, 800 pounds. Unusually dirty weather on the banks is reported by the skippers of incoming schooners.

Arrivals and sales today:  
American  
Brisk, 24,000 lbs., at 18.2c and 7c, and Prosperity, 10,000 lbs., at 18.6c and 7c, to the Canadian Fish & Cold Storage Co.

Atlas, 47,000 lbs., at 18.5c and 7c, to the Booth Fisheries Canadian Co.  
Valorous, 7,000 lbs., at 20.7c and 9c, and Aloha, 10,000 lbs., at 20.3c and 8c, to the Royal Fish Co.

Canadian  
Fanny F., 800 lbs., at 18.1c and 7c, to the Atlin Fisheries.

### ISLANDS GETTING IN WINTER STRIDE

Fishing and Whaling Operations Pretty Well Over But Logging is Still Active

While the fishing and whaling season is pretty well over on the Queen Charlotte Islands, logging is still active and even expanding slightly.

The Lagoon Bay cannery is now closed for the winter but the Japs are using the Lockeport cannery for salting dog fish and also have a plant at Queen Charlotte City.

T. A. Kelly's logging camp on Moresby Island are running full. There are now five camps including the new one at Logan Inlet near Lockeport. Headquarters of the Kelly Logging Co. have been moved from Cumshewa to Logan Inlet.

The clam and crab cannery of the Langara Fishing & Packing Co. at Massett continues to operate in full swing. The Watun River salmon cannery is closed. Preparations are being made to close both the whaling stations at Naden and Rose Harbor for the winter.

The Massett Inlet Pole Co. is continuing operations at Port Clements.

### AFTER THE DAY'S WORK

relieve the tiredness and tempt the appetite for your next meal with a hot cup of OXO.

Tins of  
4 Cubes - 15c.  
10 " - 30c.

**OXO CUBES**  
The Great Beef Economy.

OXO Cubes are food—Beef-food.  
OXO soothes the nerves, and rests the body. It is easily assimilated Beef-nourishment, seasoned, ready for use.

### FRESH CHOCOLATES

AT 60c PER POUND.

HAIDA HAND ROLLS and WILLARDS ASSORTED.

A large variety of centres with a good chocolate coating.

We will sell any quantity but it will pay you to buy these in the five pound box at this price.

### ORMES LIMITED

The Pioneer Druggists — The Rexall Store  
Third Ave. & Sixth St. Phones 82 and 200