

Renovation Gives Face to Old House

Homes in Prince Rupert while of sturdy construction have an old fashioned appearance both out, but this is not something which can be remedied in most cases, say builders here.

Renovation can be done.

With the interior, a new look is toward plywood and finishes can be applied to each wall in the kitchen to give a pleasing appearance. Plywood is also used in the kitchen and cupboards can be replaced by a handyman around the house.

Homes can be given a new look by addition of picture windows and new porch fronts. Homes of which there are many in the city, lend themselves well to such renovation efforts.

Some of the way to make a home more comfortable today, a few nails and some paint will give you what you can have it done by capable builders who specialize in renovation.

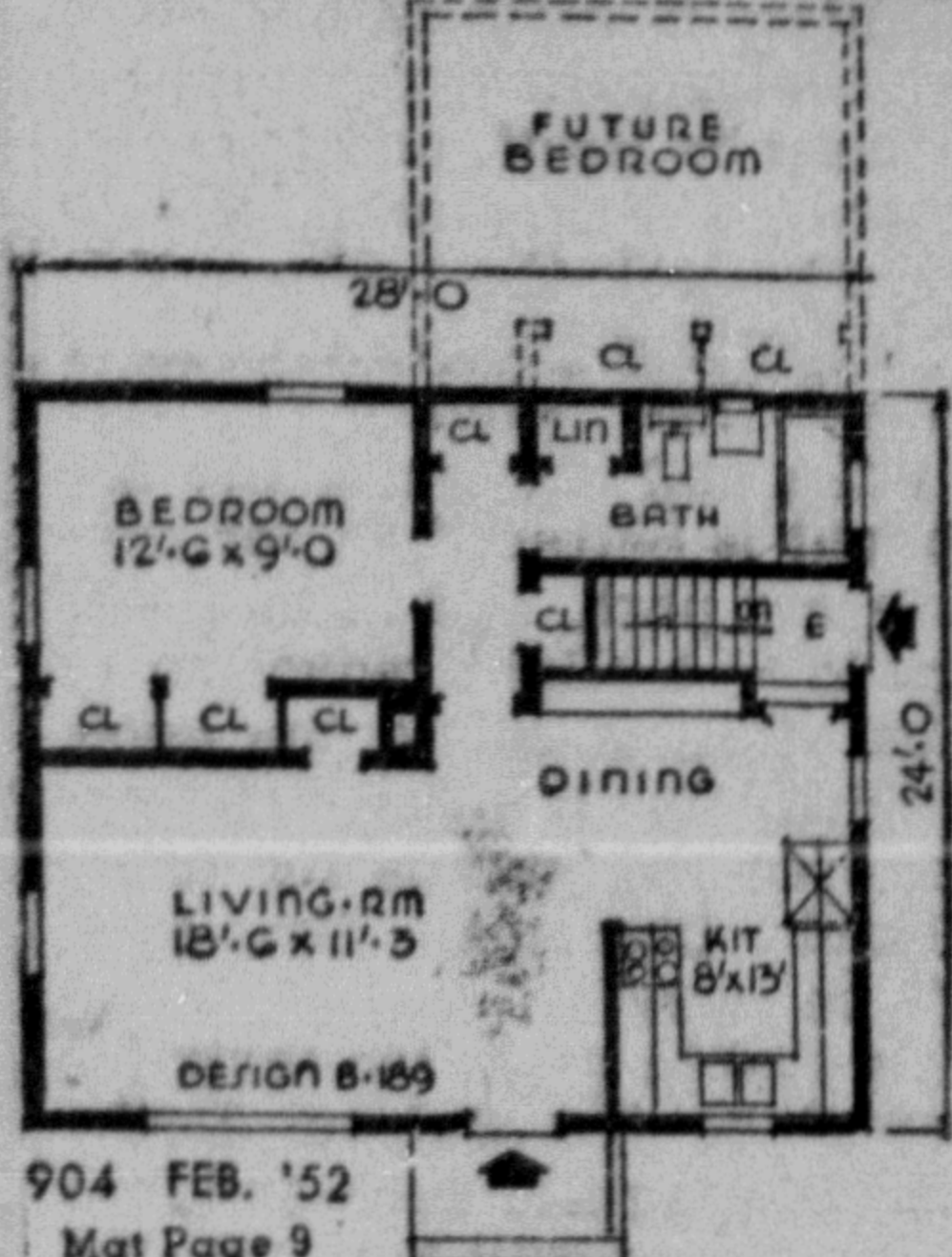
Time to Check Eaves, Drains

Now, before the advent of winter rains, is the time to clean the eaves and check the downpipes and drains of your house, for there are few things so annoying as finding the eaves overflowing and having to clean them during a downpour.

Most houses with shingled roofs will produce a lot of silt in the eavetroughs, washed down by rain. This eventually stops up the entrance to the downpipe, and spells trouble.

Drains also clog and downpipes develop leaks, either of which are troublesome and should be remedied before winter sets in.

This is also a good time to get exposed water pipes covered with a good insulation to prevent breakage or frozen pipes during a sudden winter cold spell.



THE BEACON is a small one bedroom house, compact and economical to build, with the added advantage of being expandable. With a minimum of alteration work consisting merely of opening a preframed section of the hall, a second bedroom can be added either now or in the future.

The open plan arrangement of the living-dining room increases the living area while effectively concealing the kitchen work space.

Kitchen cabinets and equipment are efficiently placed and a china cabinet is located in the dining area. A total of six closets are provided, including linen cabinet and double wardrobe closets in the bedroom. Plans call for full basement, frame construction, siding and asphalt shingles.

Dimensions are 28 feet by 24. Area is 672 square feet, while cubage totals 13,104.

For further information about THE BEACON, write Small House Planning Bureau of Canada, Box 1193, Saint John, New Brunswick.

Small House Planning Bureau of Canada
Box 1193, St. John, New Brunswick

Please send me more information, without obligation, about the plan features and the type of construction used in the THE BEACON house as pictured in The Daily News.

NAME _____

ADDRESS _____

CITY _____ PROVINCE _____

Color Harmony Needed For Well-Planned Home

You and your family will feel happiest in your home when you're surrounded with colors that suit you best.

Everyone thinks of green as a fresh, peaceful, well-balanced color; yellow as cheerful, sunny; red as warm, energetic, exciting; blue as cool, reserved. In a way, you can be said to resemble the colors you like best, says paint consultant, Faber Birren.

If you're active, like to get out and around, like to have lively parties at your house, want your home to make a vivid impression on others, like unusual furnishings, then red and the colors in the red family will probably be your true favorite, most accurately reflecting your personality.

RED DYNAMIC

In this case, the keynote of your home decoration should be variety. A room can be made dynamic with well-chosen red accessories. Or, as a background color, watermelon red wall paint will give a room an active, lively atmosphere. A lively exterior might begin with horizontal siding painted red, set off by white painted shutters, posts and railing.

GREEN FOR COMFORT

If you value a cheerful home atmosphere with comfort uppermost in home furnishings, like colors that are not too strong; entertain quietly, green is probably your favorite color.

A medium green, neither garish nor too subdued, will be a happy choice as a color to paint your house exterior. It will give friendly yet quiet charm to your home.

Neutral white trim will create a soft blend rather than a sharp color contrast.

Used on interior walls, green provides a hospitable background for brilliant color accents in furnishings and accessories.

CONSERVATIVE BLUE

If you want your home to be dignified and impressive like antiques and traditional furniture; choose your guests carefully and entertain your friends quietly; are more or less conservative, blue is probably the color that you feel most at home with.

A cool, conservative blue with white shutters is an excellent color plan for painting the exterior of the more formal, conservative house which you probably favor if blue is your color. An interesting note of contrast can be added by painting the front door red.

Blue makes an effective background color for traditional room furnishings. Enhance this pleasing room scheme by confining fabric to a single pattern and accents to a single contrasting color.

APPEAL OF YELLOW

If you find modern decoration and modern art appealing; like to work at home on your pet projects; choose colors more by reason than emotion; value intellectual ability highly and prefer good conversation to a card

game, yellow is probably your favorite color.

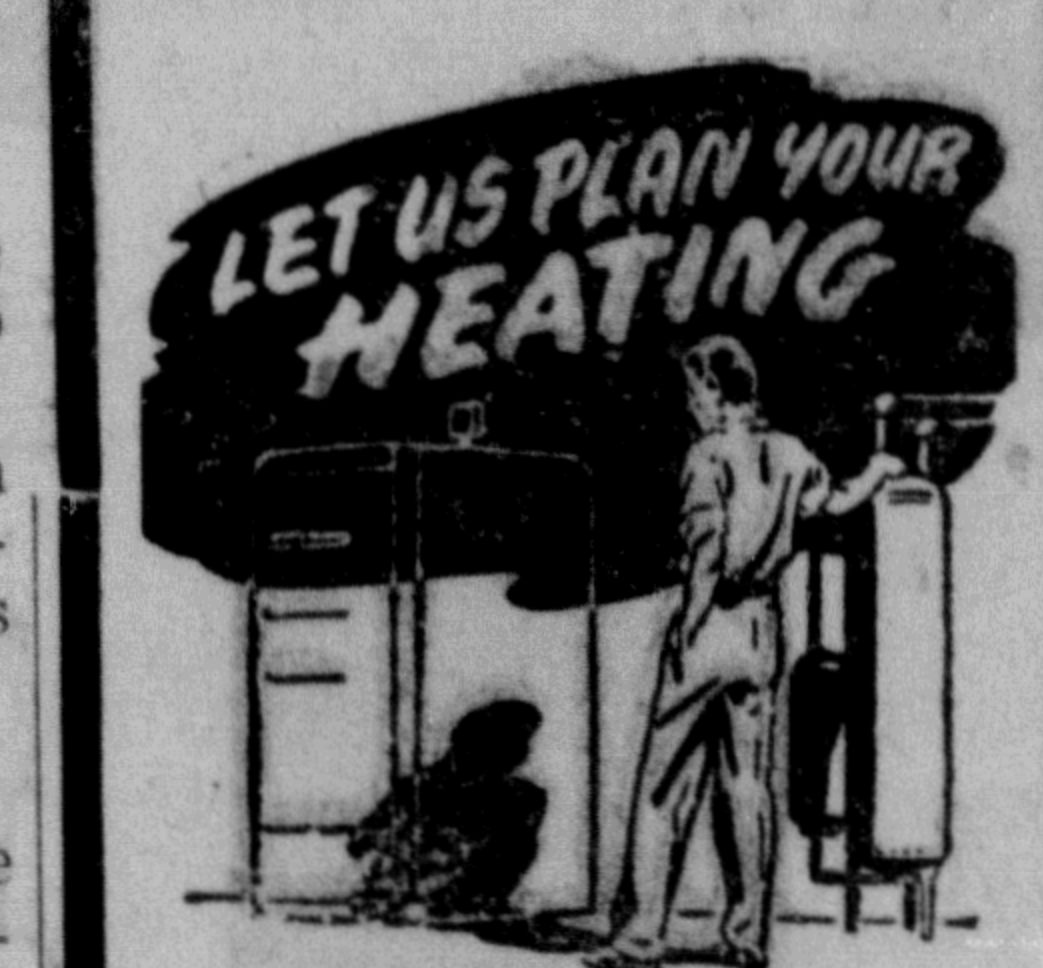
The intellectual appeal of yellow can be expressed in the natural yellow wood tones of modern furniture. Unpatterned ceiling-to-floor draperies, and pale pastel yellow-green paint on walls and ceiling, will give the room both spaciousness and the unchattered effect you like.

On the exterior of your house, use yellow as a unique accent color. It will contrast attractively with brown stained siding or with gray paint.

Ike Would Assign Negro To Cabinet

CHICAGO (AP) — Gen. Dwight D. Eisenhower said here he would appoint a Negro to his cabinet if he were elected president and if the Negro were the right man for the job.

The Republican presidential nominee, making an exception to the rule about discussing possible appointments, told a three-state meeting of Republican leaders of his views on the Negro at the top level of his administration.



Whether you are installing a new heating plant or renovating the old, you had better start now before cold weather sets in. And to be sure of guaranteed results we suggest you call our licensed plumbers and heating experts now. Free estimates, of course.

YOUR PLUMBING IS OUR JOB

SMITH and ELKINS LTD.
P.O. Box 274
Phone 174

August Construction Awards See Slump

Total values of construction contract awards of \$175,756,900 for the month of August, was \$11,855,700 under the total for the same period of last year.

Cumulative total for the first eight months of 1952, according to MacLan Building Reports Limited, stands at \$1,219,933,200 as compared to the eight month period of 1951, which had a dollar volume of \$1,692,741,300. This represents a decrease of \$472,808,100 for the period.

Increases in the individual construction categories were scattered throughout the provinces. The only category to show a Dominion increase was residential, which increased \$6,169,600 over the \$35,177,600 recorded for August, 1951. Drops of \$4,342,700 (business); \$2,133,200 (industrial); and \$1,549,400 (engineering) as against the \$6,169,600 residential increase produced the \$11,855,700 overall decrease.

Comparative figures for each category in August, 1951 figures in brackets follow: Residential, \$41,347,200 (\$35,177,600); Business, \$13,420,400 (\$15,553,600); and Engineering \$73,007,400 (\$84,556,800).

The Western section of the country showed a total decrease of \$16,492,306 even with the substantial increases of \$5,083,900 and \$5,507,800 in residential and business respectively. The large decrease of \$27,423,100 in the engineering category, coupled with the \$660,900 decrease in industrial were sufficient to account for the \$16,492,306 overall decrease.

In the "Big Job List of the Month" no one particular category was outstanding enough to merit singling out. Housing

construction had two large projects under way; one of 200 homes in St. Laurent at \$2,500,000 and one of 250 homes in Sarnia, Ont., at \$2,125,000 for CMHC.

Other big jobs include storage warehouse, Montreal, factory and office, Montreal, air defence headquarters, St. Hubert, Que.; school, Halifax, N.S.; office quarters, Halifax; roadwork, Province of Alberta; nurses home, Saskatoon; factory, Port Hope, Ont.; three pumping stations, Edmonton, Alta.; high school, Halifax; a hydro power project, MacArthur Falls, Man.; a conservation dam, St. Marys, Ont.; supply and fabrication of steel huts, Montreal; and a hospital, St. Boniface, Man.

LONG TERM
Except for a brief period of semi-retirement in 1949, Generalissimo Chiang Kai-Shek has ruled Nationalist China since 1927.

SAANICH PLUMBERS

For all your Plumbing and Heating Needs

Phone Blue 846
Cor. McBride and Fifth Ave.

NORTHWEST CONSTRUCTION LTD.

GENERAL CONTRACTORS
Prince Rupert

P.O. Box 1381

COMMERCIAL - INDUSTRIAL - DOMESTIC CONSTRUCTION and MAINTENANCE

THE PRICE OF PICTURE WINDOWS IS COMING DOWN!

The Low Cost Ranch Type Picture Window

- ELIMINATES USE OF EXPENSIVE FACTORY-MADE WOODEN SASH
- IS INEXPENSIVE and SIMPLE TO CONSTRUCT ON THE JOB
- IS ADAPTABLE TO ANY TYPE OF ARCHITECTURE

We will be glad to show you how you too can have a picture window at low cost.

EBY & SONS LTD.
PRINCE RUPERT HOME BUILDERS
Third Avenue and Cow Bay Phone Blue 156

Cruise Ship Sinks

(Continued from page 1)

The saga was related by 23-year-old Lorraine Shaylor, clerk with a San Francisco insurance firm.

Lorraine, her sister, Gladys, and their father were members of a tour group sponsored by the Catholic Young Men's Institute of San Francisco. Their tour was scheduled to go to Alaska last year but plans had been cancelled when the Kathleen was damaged in a collision with the steamship Prince Rupert.

So the group made plans to take in Alaska this year and the sceptre of the shipwreck caught up with them on a rocky shoreline of Alaska.

"The Kathleen must have had something against us," Lorraine said. When she was asked where the tour planned to visit next year, she replied: "They haven't said yet. I hope it's not Alaska because if it is I don't think anybody will go."

The Shaylor family figured they lost \$1,500 in luggage and personal belongings. Most of the passengers estimated their losses at about \$500.

"We were in bed when the ship went aground," said Gladys Shaylor, clerk with the Bureau of Internal Revenue. "Things flew around the room. Glasses fell from the table."

"At first people were rushing around. There was quite a bit of near panic but the crew got the people quieted down."

"It was pretty awful climbing down those rope ladders into lifeboats."

"The ship went aground about 4 m. We made the beach about 9:30 then we left the beach. We hiked a mile they said, but it felt more like 10."

HILPOTT EVITT & CO., LTD.

BUILDING SUPPLIES AND COAL

PHONE 651 or 652 PO BOX 748

FLOOR SANDING...

RENT A SANDER or YOUR FLOORS SANDED BY EXPERTS

Greer & Bridden Ltd.
115 1st Ave. West P.O. Box 721

RANTHAM Electric Electrical Contractors

NEW CONSTRUCTION

REWIRING OLDER BUILDINGS

Phone Blue 293

HANDYMAN HOME SERVICE

General Contractors

Building and Repairs of all kinds. Painting and Decorating

P.O. Box 1670 Phone Red 894

FREE

24 Pieces Libbey Safedge CRYSTAL GLASSWARE

Retail Value \$14.85

A MATCHED SET — beautiful and useful. 24 lovely glasses with a new exclusive Western pattern that cannot be purchased anywhere. A complete matched set in 4 sizes of 6 glasses each. FREE — with the purchase of a Coleman

Coleman OIL HEATER

TERMS AS \$2.50 LOW AS \$1.00 A WEEK This Offer for Limited Time Only

Look what you get with a Coleman OIL HEATER!

Only \$86.95

EASY TERMS

Small in size — small in price — giant in performance! Produces 32,000 BTUs of heat per hour. A really fine room heater — a dandy auxiliary heater! See this shadowed mahogany beauty for yourself. You'll be amazed at its low price — its high power! Come in and inspect this heater.

Comfort casts so little with a Coleman

Gordon's HARDWARE
McBride St. Phone 311

THERE'S SO MUCH TO ENJOY IN A MODERN HOME

WHY DON'T YOU MODERNIZE YOURS?

WITH BIRCH PLYWOODS, MAHOGANY PLYWOOD, KNOTTY PINE, ARBORITE, PRIMTILE, SYLVA-CORD TEN-TEST PLANK

And Many Other Materials We'd Just Love To Tell You About

ISLAND CITY BUILDERS SUPPLIES **ALBERT & McCAFFERY Ltd. BUILDERS SUPPLIES**

WHERE SERVICE TO YOU IS A PLEASURE TO US