

IN VANCOUVER
Drive a 1952
AUSTIN A40 U-DRIVE
Best Rates by the Day, Week or Month
ROADWAY U-DRIVE LTD.
Broadway Vancouver 9, B.C.

BUYS AND WHYS
A WEEKLY INFORMATION SERVICE

MONTREAL, September 25th—Lovely Kim Hunter, co-star of Paramount's "Anything Can Happen", has a beauty-tip for you. "Even the best make-up will look lifeless if you put one 'face' on top of another," says Kim. So get to the bottom of yesterday's make-up and grime... try **WOODBURY COLD CREAM**, with Penaten. Yes, Penaten, the exclusive "miracle" ingredient in Woodbury Cold Cream, allows the rich Woodbury to penetrate much deeper into pore openings. Look for the "miracle" ingredient in Woodbury Cold Cream, allows the rich Woodbury to penetrate much deeper into pore openings. Look for the "miracle" ingredient in Woodbury Cold Cream, allows the rich Woodbury to penetrate much deeper into pore openings. Look for the "miracle" ingredient in Woodbury Cold Cream, allows the rich Woodbury to penetrate much deeper into pore openings.

Get All The Help I Can with my Fall housecleaning. And I'm sure you feel the same way about it. That's why I'd like to tell you about one of my favorite housecleaning "helps"... **ENERGINE CLEANING FLUID**. You'll be amazed at all the jobs it does so beautifully. It gets kitchen and bathroom tubs and basins whistle-clean in seconds... makes porcelain surfaces (refrigerators) fairly sparkle. And, of course, it's a "whizz" at removing grease stains, wet paint, tar and chewing gum from upholstery and more. It won't harm the most delicate of fabrics—contains no abrasives. So let it help you with your housecleaning. Costs only 25¢.

What A Wonderful Dish to eat before a tired man at the end of a busy day. Your husband will really appreciate a delicious **KRAFT DINNER**. It's macaroni-and-cheese at its best. And it cooks to tasty lightness in only 7 minutes! What's more, it does wonders for an ailing food budget. You see, "Kraft Dinner" gives you a wholesome main dish for 4 that costs less than 5 cents a serving. Better get some soon! And look for it in the brand new package with the easy-to-notice design that helps you in your shopping because it catches your eye right away.

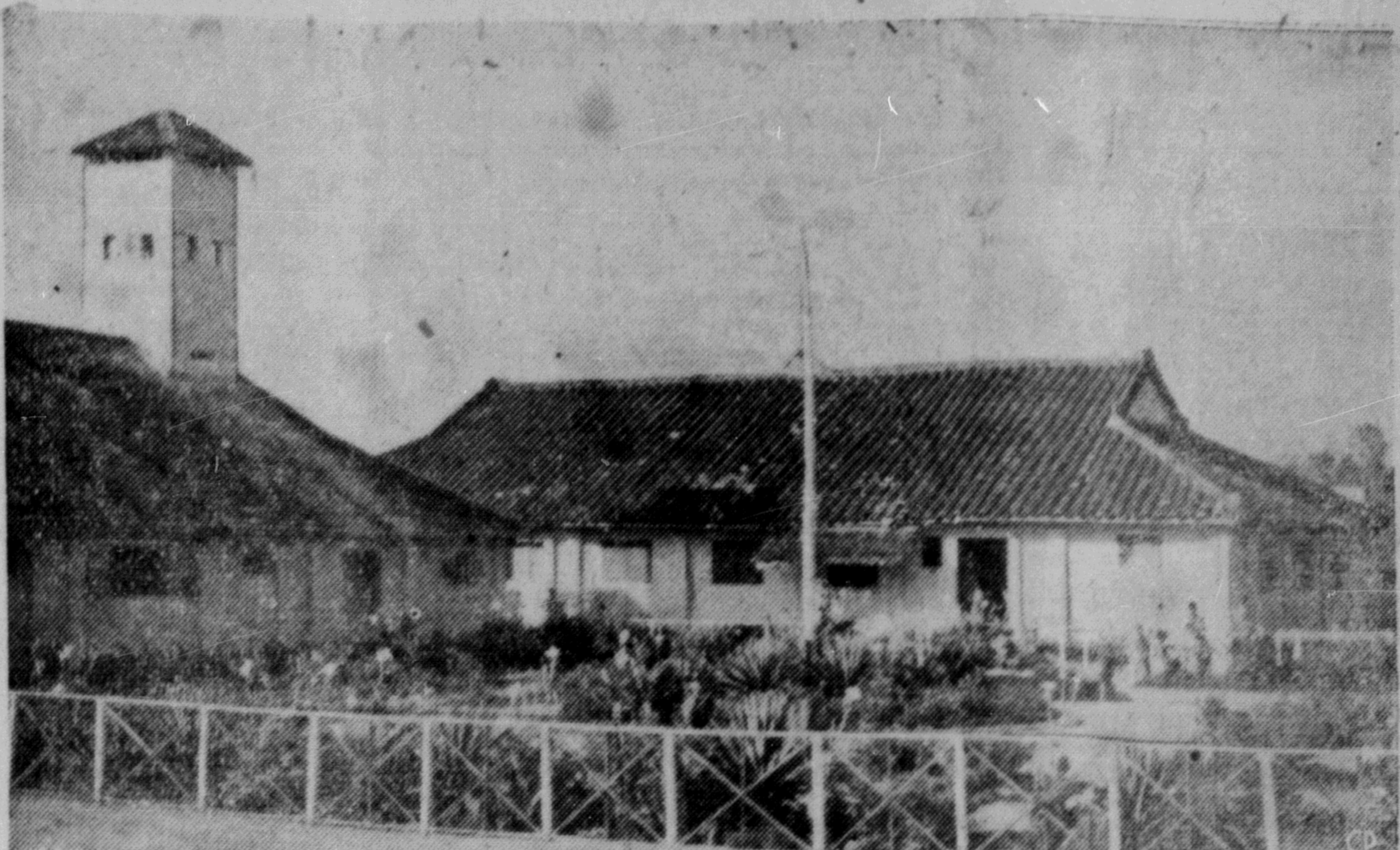
Here's To Your Very Good Health! Yes, it's a toast to health and beauty when you drink the juice of one fresh lemon in a glass of water—*first thing on arising*. You see, this natural fruit drink helps keep your regular the healthful way. That's because lemon-in-water gently helps your system regulate itself. It's good for what ails you. So take my tip—if you're feeling out of sorts, follow this healthful lemon formula for feeling better. It always makes me feel like a new woman. But one thing I make a point of doing. I always use **SUNKIST LEMONS**. I find I get more, delicious juice from them than any others I've ever tried.

Surprised your husband will be to find out you're saving and he'll be so impressed, he'll want to imitate you. Buying **Canada Savings Bonds** for the generous interest rates and the fact that they'll always be worth full face value is a real bargain. Just yesterday, I was at my branch of the **BANK OF MONTREAL** asking about **Canada Savings Bonds**, and they explained to me that, by holding on to them until maturity, I can sit back and benefit from a really interest rate of 3.44%! And the bank makes **Canada Savings Bonds** so easy to buy! Only 5¢ each, with the balance over a year. In other words, for as little as 5¢ you can make the down-payment on an excellent investment for one, and going to take full advantage of when the bonds mature at the B of M next month.

On My Shopping List. You see, **INSTANT CHASE & SANBORN COFFEE** is a "must" in our house. For a "quickie" cup between household chores, there's nothing like it. It takes no longer to make than boiling the water. And it's a hostess' best friend... it's as easy to make ten cups as one. But the real reason I like to have a supply of Instant Chase & Sanborn always handy is that it's just plain good. You see, it's made by folks who "know their coffee"—it's the result of over 100 years of experience. Something else you'll like about Instant Chase & Sanborn—it's truly economical. The regular size jar gives you 100 cups of coffee as a pound of ground coffee—but what's in price!

Of The Blue—the whitest wash you've ever seen! Sounds like it? Well, it is easy. Easy to get spare sheets, towels, pillow cases, shirts and table linens when you use Blue. Just wash a little Blue into your washing. Blue is kind to your finest fabrics and not taking chances when you use it to wash. It prevents yellowing. And the cost? Think of it... a few pennies a month, that's all. It prevents yellowing. And, incidentally, it's good for rinsing white hair, too!

That "a rose by any other name would smell as sweet". Well that's true but I've found that "any other name" won't do when it comes to buying Face-Elle tissue handkerchiefs. I know from experience that the way to be sure of getting **FACE-ELLE** quality is to ask for it by name. That's important because Face-Elle is often confused with another brand name which some people apply to all tissue handkerchiefs. Say "Face-Elle" and you'll enjoy the comfort of genuine Face-Elle quality at an economy price... the tissue is stronger and more absorbent too!



COMMANDO BARRACKS—This flower-decked monastic-looking group of buildings is the barracks of commandos led by Lieut. Hunh Hih. In other buildings at the back the 120 soldiers live with their wives and children, whom they leave for four or five days at a time when on patrol. The blocks shown comprise an orderly room, arsenal, guardroom for prisoners and a canteen. Commando soldiers are "supple nentaries," who are paid on a daily basis and are free to leave any time. Hinh formed and trained his unit two years ago and, apart from casualties, has kept it intact ever since. (CP PHOTO)

TODAY'S STOCKS
(Courtesy S. D. Johnston Co. Ltd.)

VANCOUVER		TORONTO	
American Standard	.07	Athlona	.14
Bralorne	5.90	Aurique	.16 1/2
B R X	.03 1/4	Bevcourt	1.20
Cariboo Quartz	1.36	Buffalo Canadian	.21
Congress	.06	Consol. Smelters	35.00
Cronin Babine	.29	Conwest	3.25
Giant Mascot	.91	Danaldia	.46
Indian Mines	.12	Eldona	.16
Pend Oreille	6.25	East Sullivan	7.40
Premier Border	.18	Giant Yellowknife	8.50
Reno	.03	God's Lake	.56
Sheep Creek	1.40	Harricana	.08
Silbak Premier	.40	Heva	.06 1/2
Taku River	.07 1/2	Duvex	.60
Vananda	.02 1/2	Joliet Quebec	.35
Salmon Gold	.02 3/4		
Spud Valley	.06		
Silver Standard	1.80		
Western Uranium	4.40		
Anglo Canadian	7.30		
A P Con	.42		
Calmont	1.35		
Central Leduc	3.75		
Home Oil	13.00		
Okalta	1.30		
Royal Canadian	.22		
Little Long Lac	.69		
Lynx	.11		
Madsen Red Lake	1.88		
McLeod Cockshutt	2.60		
Moneta	.36		
Negus	.25		
Norafida	79.00		
Louvicourt	.20		
Pickle Crow	1.60		
Petrol Oil & Gas	1.04		
Senator Rouyn	.12 1/4		
Sherrit Gordon	4.90		
Steep Rock	6.55		
Silver Miller	1.52		
Sweet Grass Oils	1.08		
Golden Manitou	5.40		

Plan Extra Auditorium For New Abbey Theatre
DUBLIN (CP)—Directors of the Abbey Theatre have announced the appointment of an architect and a consultant to design the new theatre to be built on the site of its historic predecessor, razed by fire in July 1951. Michael Scott, the architect, is a former Abbey actor. Pierre Sorrel is the consultant from Paris. The new theatre will incorporate the sites of adjacent buildings and while it will seat 700, compared with 500 in the old auditorium, the Abbey tradition of intimate drama will be maintained.

Canadians Glimpse Coronation Styles

TORONTO (CP)—"Coronation" appears the leading trend in fashion news this winter. Fall showings of London, Paris and New York imports by Toronto's leading department stores pointed up the big event of next spring. One outstanding model was an ivory satin court dress designed by Hartnell, the Queen's dress-maker. Its chief feature was a court feather design embroidered in gold, silver and diamante.

Over all was a peeress robe as worn by a countess with 2 1/2 rows of black seal tips on the cape. A style note said the coronet is always carried in the hand, never worn, but is held over the head at the time the crown is placed on the Queen's head. Supple fabrics that reveal the figure, belts — to indicate the changing waistline — were outstanding features in another display. Favored colors for fall were shown as deep wine, reds, dark greys, brown-black combinations were given attention. Moss green also was among the favored.

DOUBLE EVENT
MILDSTONE, England (CP)—Mother and daughter became brides the same day at a local church. Mrs. Joyce Crisford, 41 married Frederick Jury, 35. Miss Zena Crisford, 18, married Eric Souter, 23.

FRENCH PONIES
The famous shaggy Camarove ponies of France are born black, turning white later.

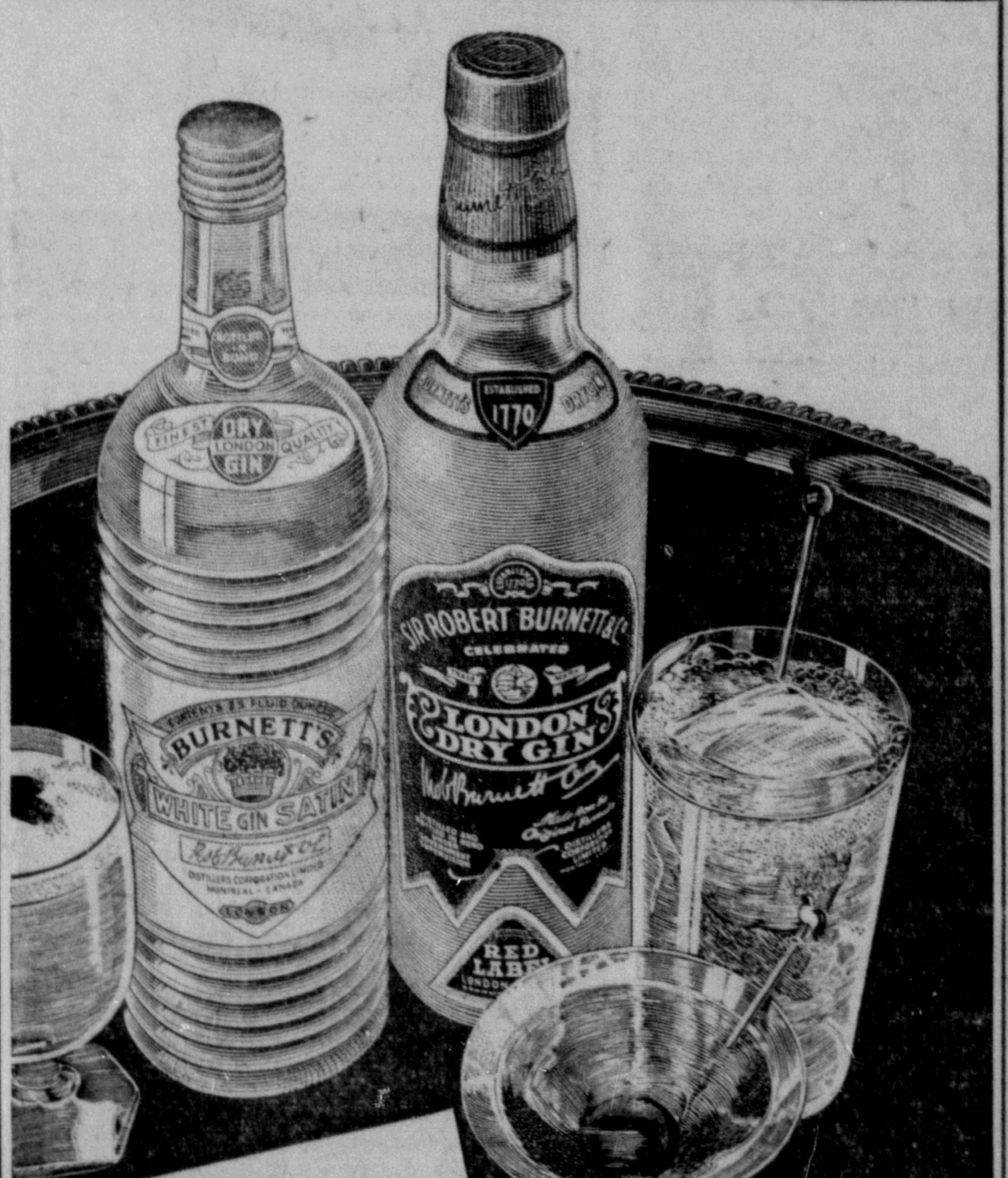


What makes the difference?

One cheese sandwich can look just like another... but the flavor can be deliciously better, thanks to hearty Chateau! The secret of Chateau's taste-tempting mellowness is a master blending of fine Canadian Cheddar with thick, fresh cream. It's a real cheese flavor... that makes the tempting difference in cheese dishes, sandwiches, salads, snacks.



Chateau is just one of **BORDEN'S FINE CHEESES**
Try these Borden Cheese favorites too!
Smooth Baumert Cream Cheese, zesty Canabec, tangy Grated Cheese, and Borden's 6 Cheese Spreads (in glasses).



More people drink Burnett's than any other dry gin

BURNETT'S WHITE SATIN GIN
BURNETT'S LONDON DRY GIN

This advertisement is not published or displayed by the Liquor Control Board or by the Government of British Columbia.

Values Worth Comparison

MILL ENDS

Satins, Taffetas, Crepes, Sharkskin, Angel Skin, and novelty fabrics. White and assorted colors. One to 5-yard pieces.

Selling at **ONE-THIRD** their regular value.

MILL ENDS RAYON CURTAIN MARQUISSETTE

Ivory shade, 46" wide, 5- to 12-yard lengths. **59c**
Regular 89c a yard for **YARD**

White Bed Sheets

Pepperell sheets, fine cambric finish. Absolutely no dressing... Size 81" by 99" Hemmed ready for use. **PAIR \$8.50**

DRAPERY SAMPLES

Pieces large enough for standard size table covers, cushions, shoe bags, etc. Priced at less than half regular value.

HEIDENBERG LACE NET CURTAINS

These curtains do not require ironing. Ivory shade. Hemmed and beaded. Ready to hang. Size 40" wide by 81" long. **PAIR \$3.75**

PLASTIC DRAPES and COTTAGE SETS

Good quality, perfect goods, ready to hang.
DRAPES Pair **\$1.59**
COTTAGE SETS Set **\$1.59**

LADIES' BLACK STRIDES

Good quality gabardine, 13-inch cuffs, self-helts, zipper fastening. Sizes 10 to 18 **PAIR \$12.95**

BOYS' PYJAMAS

Penman's make. Jersey knit, Ski Pants, Pullover tops. Sizes: Boys'—S-M-L. **SUIT \$2.95**

BOYS' JACKETS

All wool check Frieze... double shoulder and back... assorted patterns.
Sizes 8 to 14 **\$6.95**
Sizes 16 and 18 **\$7.95**

SUITING GABARDINE

Good quality blend gabardine, 57 inches wide. Ideal for suits, slacks and skirts. Good shades—Green, Rust, Brown, Grey, Blue, Black Cinnamon, Sea-Foam. **Yard \$2.95**

FRASER & PAYNE

Here's how I save food dollars!

Protect the original freshness and nourishment of meat, fish, vegetables and other perishables by storing them in Hand-e-wrap heavy waxed paper. Leftovers, too, keep better in Hand-e-wrap, and you'll be dollars ahead!

Hand-e-wrap
HEAVY WAXED PAPER

Save food waste.... Save food taste

SAVE WITH HAND-E-WRAP REFILLS

Pop a new refill roll into your empty Hand-e-wrap carton. You save the cost of a new container every time!