

# Terrace Celebrates 25th Anniversary

— EDITORIAL —

We join with the rest of Prince Rupert in well-wishing Terrace, our nearest neighbor to the east, celebrating its 25th anniversary tomorrow.

Probably the most remarkable thing that has happened to Terrace in the last 25 years is what has become its daily routine with most of its citizens—working hard to develop a fine community.

The community as a whole has done much to attract the industry which today makes Terrace a growing centre and which in the last few years has more than doubled its size.

A man who has done much for Terrace where he could do it best is former lands minister E. T. Dwyer. There is little doubt he strained hard to get both Columbia Cellulose Co. Ltd. and the Aluminum Co. of Canada settled near and around Terrace, the constituency he represented.

Terrace has everything to gain, very little if anything to lose as developments appear to be in place today and in the future.

Soon it will be a railway junction with a direct connection to one of Canada's largest single industrial undertakings at present—Kitimat and alum-

ina. This can't help but do a lot of good for Terrace, at the same time, the centre of much good farm produce should not entirely depend on forest, mining and allied industry for its future.

Agricultural development is a growing need in the northern areas where food stuff has to be transported at high cost.

While farming may be a little more difficult in the southern areas, the fruits thereof cannot be over-estimated. Terrace will be called upon to supply a growing army of industrial workers at Kitimat.

In fact, right now Prince Rupert could be well aided with a source of supply in agricultural products available at Terrace. This in turn would necessarily help the Skeena River village.

Salute to the pioneers who made Terrace possible—A wish of good will on your Silver Jubilee, 25th birthday party, is our message.



**SUMMER RESORT**—One of the many beauty spots seen around and near Terrace is Lakelse Lake, 12 miles south of the village, which offers excellent swimming and fishing in season. There are also hot-springs flowing into the lake which have been studied for further development.

## THE FOOD BOWL OF NORTHWESTERN B.C.

### Farmers See Another Future For Terrace

Lumber has made Terrace grow but in farming lies another future. That is the thought which dwells in the minds of many newcomers to this village which tomorrow celebrates its 25th anniversary of incorporation.

Showing perhaps the most outstanding growth of any centre in the province during the last 10 years, Terrace has more than quadrupled its population from a war-time 600 and has doubled its growth in the last two years.

Major factor in its recent development is the operation of Columbia Cellulose pulp mill at Prince Rupert which draws most of its pulp logs from its No. 1 forest management licence around Terrace.

Several lumber mills also are a part of the industrial growth of the village, but with more than 50,000 acres of potential farm land—several thousand acres already under cultivation—Terrace is squinting toward the horizon which spells the food bowl of northwestern B.C.

One of the first to put his faith in farming at Terrace is pioneer Dutchman Peter Van Stolk who arrived before the First World War and has developed his 20-acre farm to such an extent that the Dominion government is using it as an illustration station.

Other Dutch farmers have followed Mr. Van Stolk. A recent development comes with the purchase of a 160-acre farm by

L. R. Doorman, a Holland graduate in scientific farming and applied agriculture.

Mr. Doorman is sparking a move to attract many of his countrymen to the area to open up a 1000-acre basin near the Skeena river for truck farming.

The future for agriculture, say the farmers, is assured in Terrace.

Prince Rupert, a fast growing port, 93 miles west, would draw heavily on every type of agricultural produce while the future town of Kitimat would mean another wide market.

Terrace looks back on a lot of success today, but its forward outlook is still more rosy. It has everything to gain.

## Terrace Statistics

Incorporated as a village in 1927, Terrace has an area of 349 acres. It is situated on the Skeena River 93 miles east of Prince Rupert. The population has doubled over the past two years and is now estimated at 2,500.

Terrace has: Diesel-electric power, supplied by the B.C. Power Commission with 381 domestic, 97 commercial and 15 industrial services.

Water obtained from Howe and Little creeks with a reservoir capacity of 140,000 gallons and a water pressure of 80 pounds.

Two banks. Taxes at 20 mills on 100 per cent of assessed value of property and 50 per cent on improvements.

A voluntary fire department of one fire-truck and 58 hydrants.

Septic tank sewage facilities. Telephones operated by the Dominion government telegraph and telephone service with 113 business and 237 residential connections.

Omineca Herald newspaper, published weekly.

Two hospitals serving the area, the Terrace Hospital with a complement of 12 beds and four bassinets and the Winch Memorial Hospital at Hazelton with a complement of 53 beds and four bassinets.

One elementary, one high school with an enrollment of more than 400. A new high school is being built.

Recreational facilities including a theatre, civic centre with bowling alley, ball park, hunting and fishing.

Principal religious institutions are Anglican, Pentecostal, Roman Catholic and United Church.

Three service organizations, the Board of Trade, Canadian Legion and Kinsmen.

Two hotels with 40 rooms and two auto courts.

An airport of three asphalt runways, each 5,200 by 100 feet, day-and-night operation, hangar facilities, scheduled air line service. Also a water base at Lakelse Lake, 12 miles south of Terrace.

## Paper Invites Contributions Of Social News

The Daily News endeavors to give all possible coverage of social and personal news of town and district and will appreciate contributions of such items. Reports of club activities, weddings, teas and personal notes are invited. To contact a reporter, phone 749.

IT PAYS TO ADVERTISE

## CONGRATULATIONS!

We are glad of this opportunity to join in celebrating the Silver Anniversary of the Village of Terrace.



**A. E. SMITH LIMITED**

(WHOLESALE PRODUCE)

Prince Rupert, B.C.

**SIDNEY S. GONICK**

*Optometrist*

Prince Rupert B.C.—Terrace B.C.

**GEORGE COOK**

*Jeweller*

OPENED TERRACE STORE IN 1951

**CONGRATULATIONS**

on your

**SILVER JUBILEE**

Prince Rupert

Terrace

## Grant & Newton Ltd.

ELECTRICAL CONTRACTORS

ESTABLISHED IN TERRACE IN MAY, 1951

*Very Best Wishes to the Citizens of Terrace  
On the Occasion of Their Silver Jubilee*

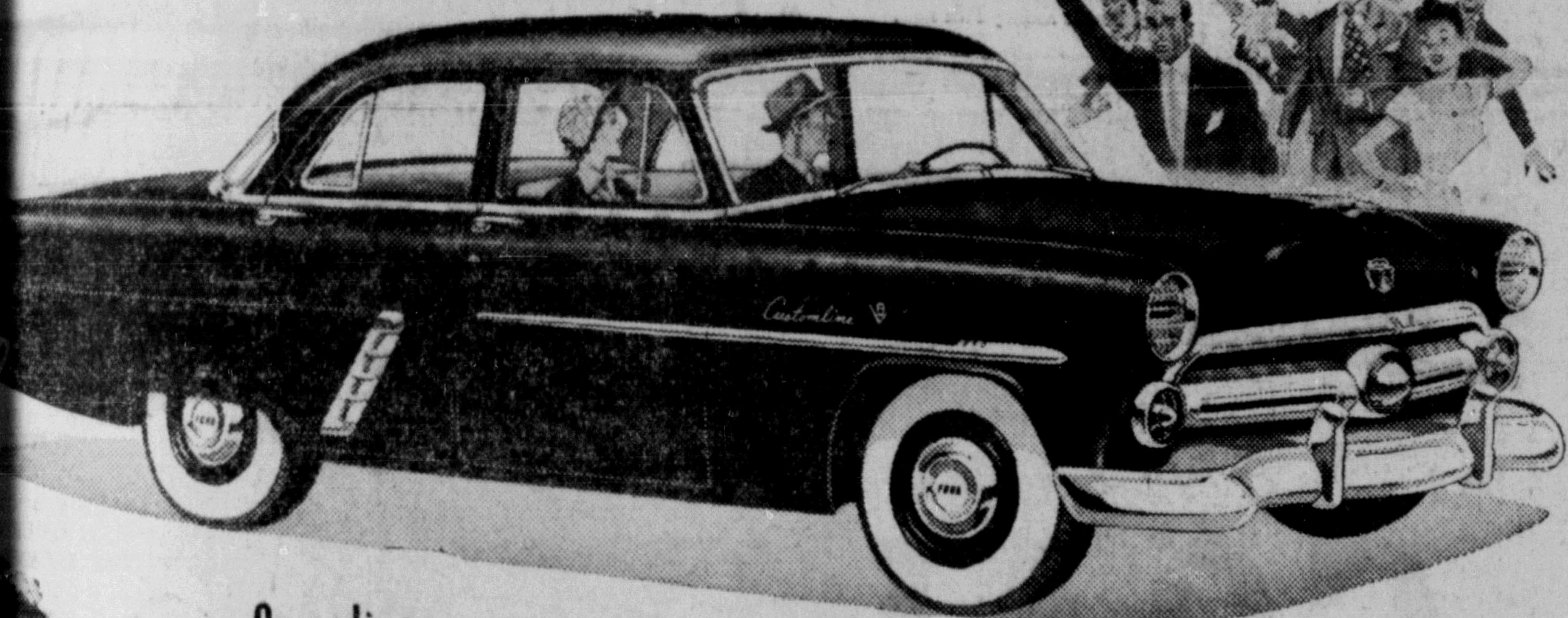
## Frizzell's Motor Products

LIMITED



We Extend Hearty Good Wishes From the Pioneers Of Prince Rupert To The Oldtimers Of Terrace

PROVE IT YOURSELF! FORD GIVES YOU MORE... BY FAR... AT LOWER COST THAN ANY OTHER CAR IN ITS CLASS!



Canadians from Coast-to-Coast say...

**"FORD'S THE BEST BUY OF ALL!"**

**"I LIKE THE BEAUTY"**

It's out of this world! Ford won my heart the first time I saw it—and it's a winner with me in every way!

**"I LIKE THE SIZE"**

I took one look at those big wide seats and all the headroom and I was completely sold!

**"I LIKE THE PERFORMANCE"**

Ford's for me—its V-8 engine certainly delivers plenty of "get-up-and-go" and with the economy I expect with a Ford.

**"I LIKE THE COMFORT"**

I'm an all-day driver myself—and Ford's solid comfort sure pays off—you can relax behind the wheel and really enjoy driving.

**"I LIKE THE RIDE"**

Smooth as silk, I'd say! The roughest roads feel like highways—and the bumps just melt away like magic! It handles like a charm on any road.

**"I LIKE THE VISIBILITY"**

I can really see where I'm going with so much extra visibility all around—and backing up is just as easy!

Buy out of income—see your dealer for a "TIME PAYMENT" plan.

BEFORE YOU BUY ANY CAR **BEST-DRIVE" FORD**

SEE YOUR FORD DEALER **BOB PARKER LIMITED**

PRINCE RUPERT, B.C. — TERRACE, B.C.

FOR THE BEST BUY IN A USED CAR SEE YOUR FORD DEALER