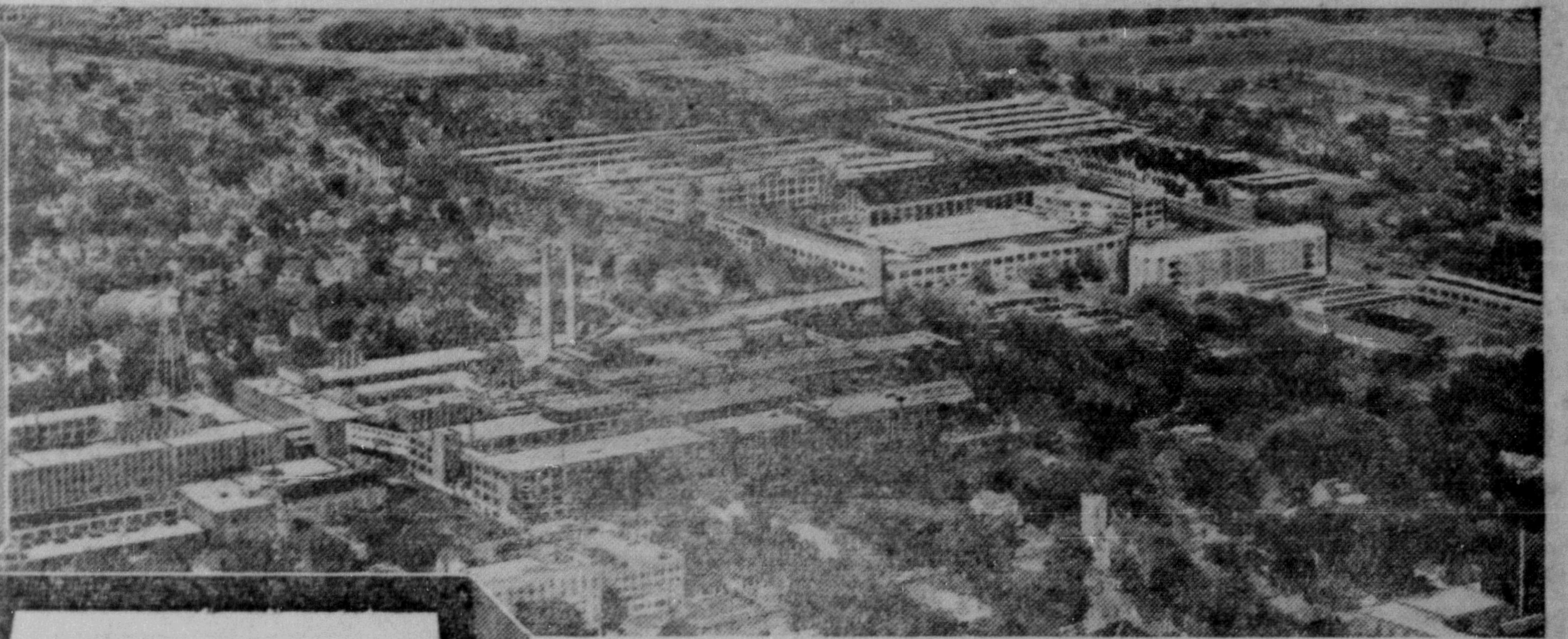


Moving Ahead With Canada

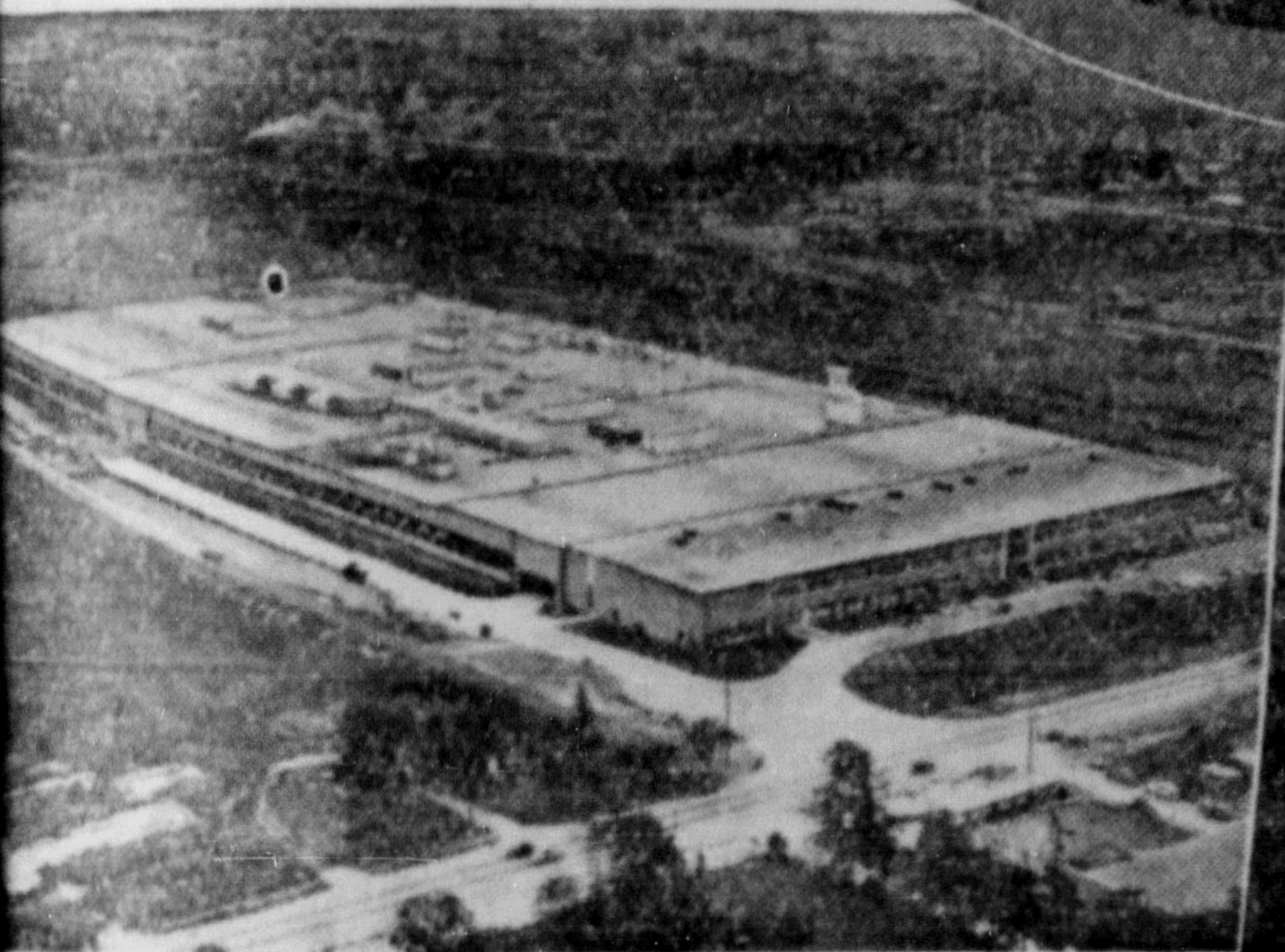
Prince Rupert Daily News
Monday, October 27, 1952

5

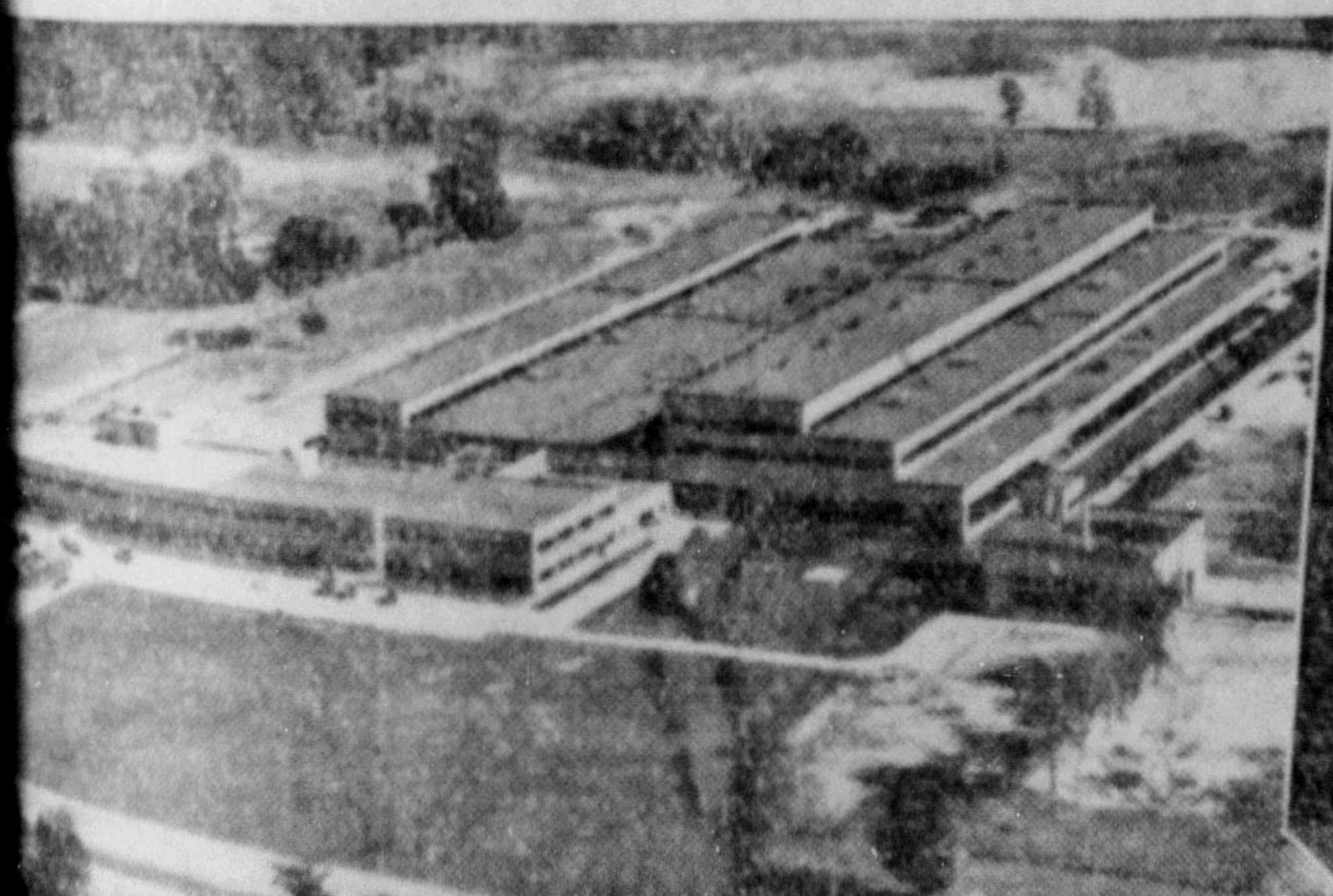
GENERAL MOTORS



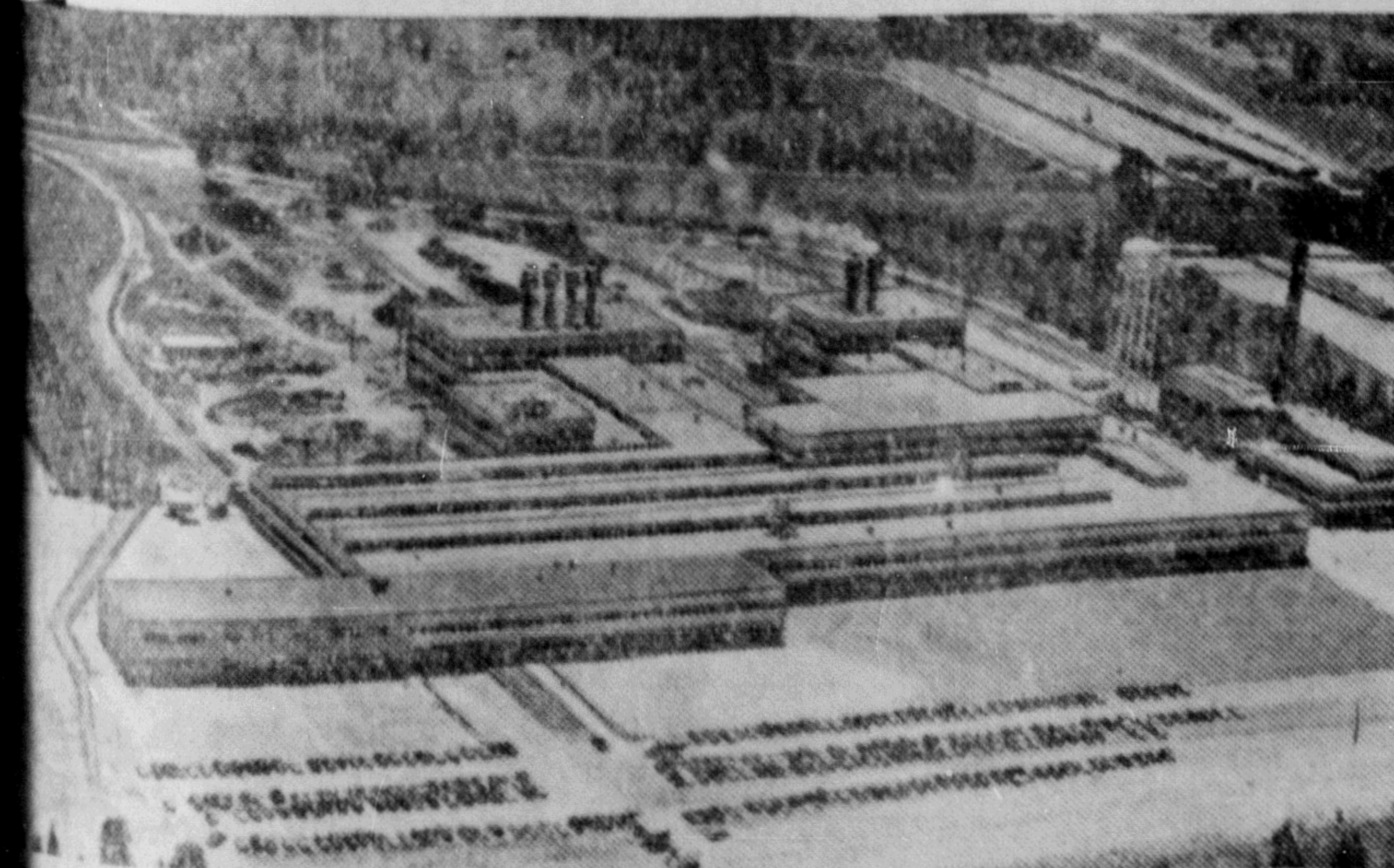
OSHAWA—General Motors of Canada Limited moves ahead with Canada, turning out more and better cars and trucks in the tradition of fine craftsmanship established more than 80 years ago by carriage maker Robert McLaughlin. The plant shown has 50 acres of floor space. In addition a new 17-acre truck plant will be opened in 1953... a new six-acre central parts warehouse was opened in 1951, and other new parts warehouses built or under construction are at Vancouver, Winnipeg, London, Montreal and Moncton.



SCARBOROUGH AND LEASIDE—Frigidaire moves ahead with Canada. This new 11-acre plant in Scarborough was opened officially on 16th. In addition, a large plant at Leaside is occupied on defence

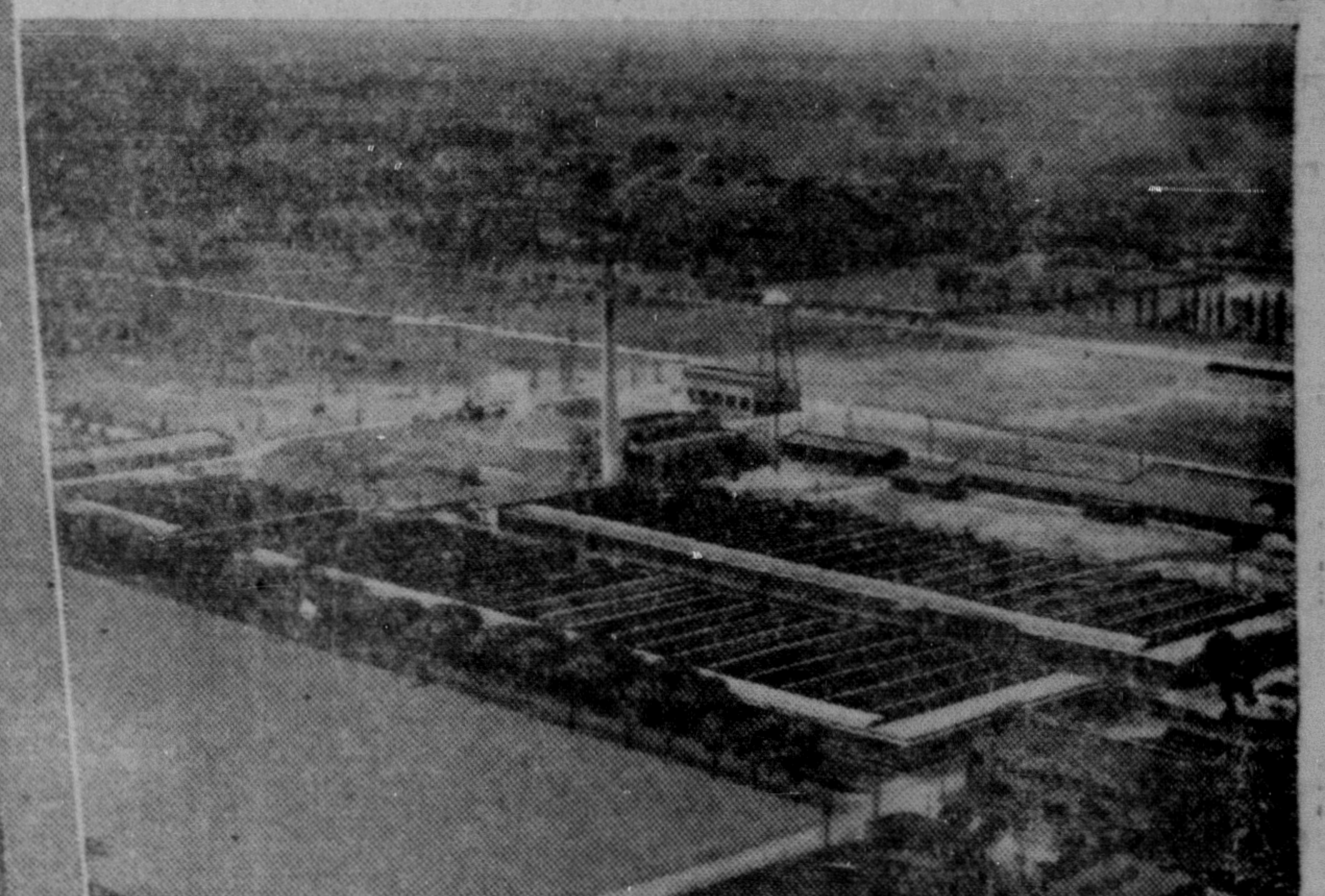


LONDON—General Motors Diesel Limited moves ahead with Canada. This seven acre plant in 1950 has already announced plans for an 85,000 square foot addition, enabling it to provide the most modern service facilities for locomotives.



ST. CATHARINES AND GRANTHAM—The McKinnon Industries move ahead with Canada. This vast new foundry, opened in Grantam Township on October 15th, makes the construction of heavy engine components impossible before. Together with the main plant in the city of St. Catharines, the McKinnon enterprise now has 35 acres of land and contracts are being let for additional building covering eight acres.

MOTORS



WINDSOR—The GM Engine Plant moves ahead with Canada. Producing more engines than ever before, the Engine Plant is constantly expanding to meet production demands at Oshawa. It covers 8 acres.

General Motors builds more cars and trucks in Canada than any other manufacturer... and because of GM's unchallenged leadership in motor vehicles, many people think of GM as only an automotive firm. But there is much more than that to the GM story.

True, GM's largest contribution to Canada's industrial strength is in the vast group of plants in Oshawa, which last year turned out 185,000 cars and trucks. But in London, Ontario, the new plant of General Motors Diesel Limited is building every type of diesel locomotive—quick, efficient switchers, mammoth high-speed road locomotives. In St. Catharines, Ontario, the two plants of The McKinnon Industries Limited turn out varied products from heavy malleable and gray iron castings to small electric motors—Delco motors that power a high percentage of home appliances in Canada. Frigidaire Products of Canada Limited, at Scarborough and Leaside plants, builds world-famous home appliances, as well as com-

mercial refrigeration, air-conditioning and humidity control equipment. In Windsor, the GM Engine Plant builds and tests the power plants for GM's Canadian-built cars and trucks.

Pictured here are representative plants of GM's Canadian divisions. They have been growing impressively—in output, in number of employees, in size of plant... striding ahead with our country. Today GM gives employment to over 20,000 Canadians. And what does GM's great industrial strength mean to any one citizen of Canada? It means more things made at home—less to import and thus more to be shared among ourselves in Canada. In addition to turning out more and better things for Canadians, General Motors plants are also contributing to the nation's defence program and to its expanding export markets. That is our proud story. That is General Motors in Canada.



GENERAL MOTORS OF CANADA
LIMITED
OSHAWA AND WINDSOR

FRIGIDAIRE PRODUCTS OF CANADA
LIMITED
LEASIDE AND SCARBOROUGH

GENERAL MOTORS DIESEL
LIMITED
LONDON

THE MCKINNON INDUSTRIES
LIMITED
ST. CATHARINES AND GRANTHAM TOWNSHIP

PRODUCING MORE AND BETTER THINGS FOR MORE PEOPLE