

## DRAPERY AND CURTAINS

Wallace's Dept. Store

### GET READY FOR WINTER

We've got the Oil,  
the Anti-Freeze,  
the Batteries, Tires,

AND DON'T FORGET  
TO TEST YOUR BRAKES

Chains and anything else that your car needs  
for SAFE WINTER DRIVING.

**Superior Auto Service**

3rd Avenue W. LIMITED Phone Green 217



For quick results try a Daily News Classified

### NOTICE

THE DAILY NEWS office is now open  
at 8:30 a.m. every morning for the con-  
venience of those who wish to call in on  
the way to work.



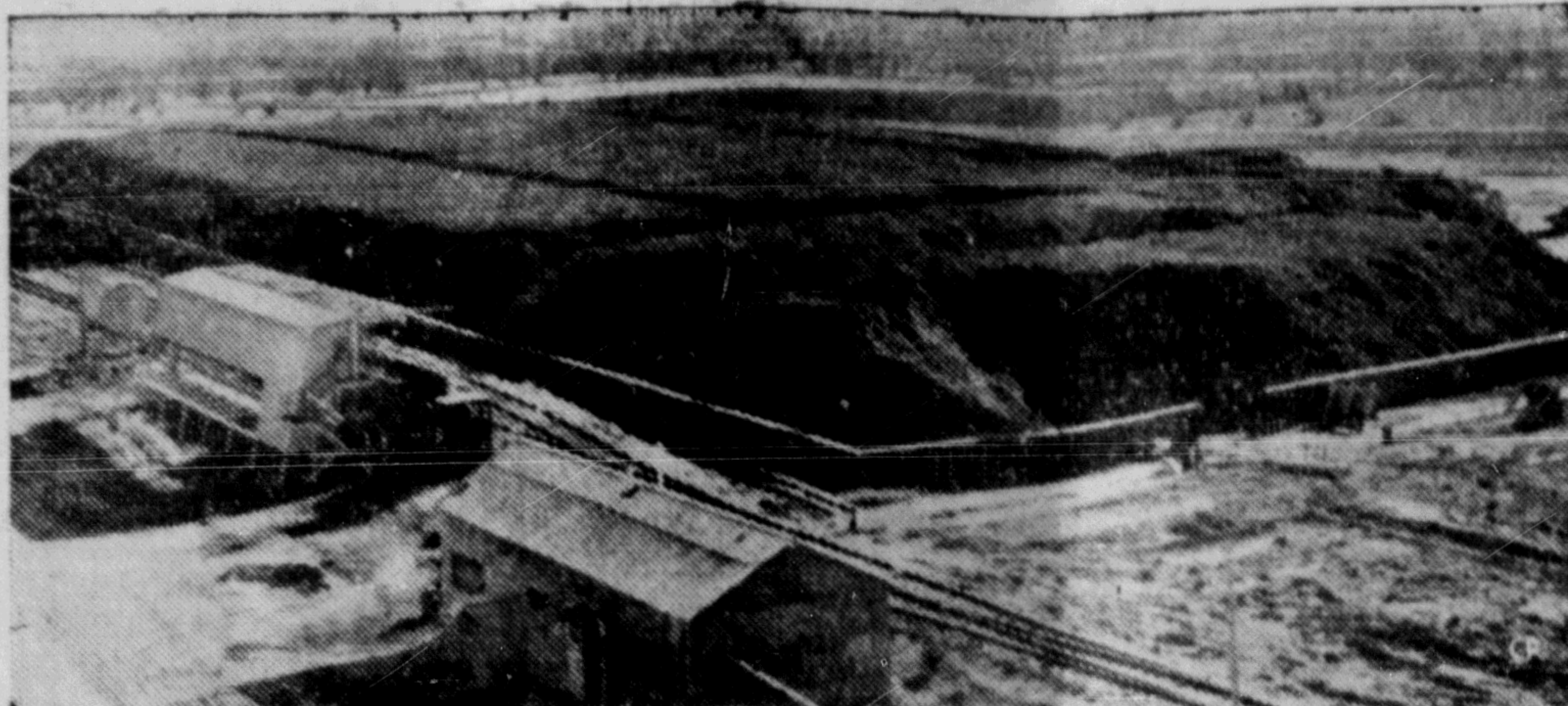
*The Luxury  
whisky  
at a popular  
Price!*

Hiram  
Walker's  
Special  
Old

CANADIAN WHISKY

BY THE DISTILLERS OF THE FAMOUS "Canadian Club" Whisky

This advertisement is not published or displayed by the Liquor Control Board or by the  
Government of British Columbia.



**SWEET BEETS**—Enough sugar to provide a year's supply for more than 250,000 persons will be extracted from this pile of sugar beets stored alongside the \$5,500,000 beet processing plant at Taber, Alta. The pile would weight about 75,000 tons, each ton of which provides more than 300 pounds of refined sugar. A record crop of 478,000 tons, largest ever for any one province, has been taken by southern Alberta's 1,592 growers from 36,778 acres of irrigated land in the Lethbridge district. More than 130,000,000 pounds of sugar is expected from the crop. (CP Photo)

### Expedition to Probe Secrets of Pacific 'Venice'

By LOUIS L. LECK  
Canadian Press Correspondent

SYDNEY, Australia (C)—Eger-  
ton Sykes, British archaeologist,  
is leading a group of scientists on  
an expedition to the Caroline  
Islands, north of New Guinea.  
The party hopes to solve the  
mystery of the fabulous "for-  
bidden city" of Metalanim.

The city, deserted now for  
hundreds and perhaps thousands  
of years, is sometimes called the  
Venice of the Pacific. Its canals  
are faced with basalt blocks  
larger than the stones of the  
pyramids. The ruins of the city  
extend over 11 square miles. In  
the centre, through a gateway  
30 feet high, is the treasure  
chamber of the kings of the sun,  
with 25-foot-high walls around  
it, six to 10 feet through. Great  
fallen columns lie across giant  
stairways and massive walls sur-  
round the city's deserted port.

Not a step nor a human voice  
breaks the silence of the ruins.  
To the natives the city is taboo.  
For more than a hundred years  
they have been telling white men  
that if they look too much they  
will die.

Metalanim is on the island of  
Ponape, one of the 2,000 miles  
long chain of islands lying like  
a barrier between New Guinea  
and Japan. The city was ap-  
parently built on artificial is-  
lands on the offshore coral reefs  
and the channels were faced  
with the basalt blocks and then  
used as waterways.

No one knows who built the  
city. Neither the Spaniards,  
who annexed the islands in  
1686, nor the Germans, nor  
the Japanese who held them  
as a mandate nor the Ameri-  
cans who now control them.

The people who built Metalan-  
im vanished without leaving a  
clue to their identity. There is  
no recognizable writing, no draw-  
ings, nothing to link the build-  
ings with any of the Pacific  
people or with any peoples known  
anywhere in the world. Archae-  
ologists are sure only that no  
Pacific natives built Metalanim.

Four skulls found in the ruins  
suggested to some anthropologists  
that the builders were a negroid  
race. But a legend of Ponape  
suggests that if there were any  
negroes there, they came later.

The legend says that the king  
of Metalanim was Idzikokol at  
the time a fleet of ships with  
black men arrived at the island.  
Although the inhabitants were  
fat and lazy with good living,  
their fortifications held off the  
invaders until a discarded mis-  
tress of Idzikokol betrayed the  
city by leading the invaders to  
a weak place in the walls.

A book published in Boston in  
1836 by an Irish seaman from  
Sydney named Frank O'Connell  
gives an account of the ruins. He  
was wrecked on Ponape in 1825  
and spent several years there be-  
fore being rescued and taken to  
America. Of Metalanim he wrote:

"There was a deep solitude,  
not a living thing except a  
few birds being discernible.  
Fruit grows, ripens and decays  
unmolested, as the natives can  
by no persuasion be induced  
to gather or touch it.

"It is evident they (the ruins)  
are the remains of a people  
superior to the present inhabi-

itants; nay, I may almost say  
dissimilar. The remains were  
evidently those of some ancient  
city or settlement, the date of  
the existence of which or the  
cause of its desertion we could  
not even guess."

Mr. Sykes believes that Metalan-  
im may have been built about  
the time of Christ by a tribe lost  
in the Pacific.

Other scientists believe that  
Metalanim was built when the  
Carolines were joined to the  
mainland of Asia and that an  
ancient people of great culture  
made what must then have been  
a peninsula their home.

### Socreds Name House Speaker

VICTORIA (C)—J. Alan Reid,  
probable speaker of the next  
legislature, took his oath here as  
a member of the Legislative As-  
sembly. Reeve P. A. Gibbs, Oak  
Bay Liberal, also was sworn in.  
Mr. Reid represents Salmon  
Arm riding. He was born in Al-  
berta and was one of the band  
of men who founded the Cana-  
dian arm of the Social Credit  
movement in Alberta 20 years  
ago.

He is expected to be the unan-  
imous choice of the Social Credit  
caucus for Speaker when the  
Legislature convenes next Janu-  
ary or February.

### Prince George Building Zooms

PRINCE GEORGE, B.C., 1-11  
building permits are any indica-  
tion, business is booming in  
Prince George.

So far this year permits have  
been issued for construction  
worth \$1,964,925, city hall offi-  
cials report.

October permits alone were al-  
most \$250,000.

### Train Schedule STANDARD TIME

For the East—  
Daily except Sunday—8 p.m.  
From the East—  
Daily except Monday 9:50 p.m.

Try Daily News Want Ads

On The Same Program

MGM's Laugh Riot  
of the Year!!  
**FEARLESS FAGAN**  
JANET LEE  
CARLETON CARPENTER - KEENAN WYNN  
— FEARLESS FAGAN (11-12)

First Show — 7:00  
Last Complete  
Show 8:20

YOU FOR ME  
STARRING  
PETER LAWFORD  
JANE GREER - GIG YOUNG  
Today To Wednesday  
TUESDAY MATINEE —  
**CAPITO**  
A Famous Players Theatre

TODAY And TUESDAY — EVENINGS — 7:00 - 9:00  
MATINEE TUESDAY — 2

THE LUSTY, GUSTY SAGA  
OF A SEA-GOING MAN...  
AND A MAN-GOING WOMAN!  
COLOR BY TECHNICOLOR  
**SCARLET ANGEL**  
Starring  
YVONNE DECARLO - ROCK HUDSON  
EXTRA  
DESERT NOMADS  
PUSH BACK THE EDGE  
POET & PEASANT  
**TOTEN**  
A Famous Players Theatre

# How much nickel is there?

"Well, son, in 1951 the Nickel  
Company mined over 11 million tons  
of ore, but they now have one more  
million tons of known ore than they  
had at the beginning of the year."

"How come, Dad?"

"Well, that's a long story. Why don't  
you write to the Nickel Company  
right now and ask them to send you  
'The Romance of Nickel'? I hear  
that it tells you a lot about nickel  
and the company's new methods  
of mining."

**INCO  
Nickel**

"The Romance of Nickel"  
a 72-page book fully illustrated, will  
be sent free on request to anyone interested.

The International Nickel Company of Canada, Limited

25 King Street West, Toronto