

PAIN from Bladder Irritation
 Soon eased by **SANTAL MIDY**
 Beware of imitations. Look for the word "MIDY" Sold by all druggists. Relieved by

EVERY BUILDER THAT YOU MEET SAYS OUR LUMBER CAN'T BE BEAT!

Ask the master builders of this town where to go for lumber and they will turn your footsteps in this direction. They maintain that the kind of woods we sell is the sort that should be put into a building that is expected to live to a ripe old age.

Albert & McCaffery
 Phones 116 and 117

Just Received!

A large shipment of

Boys' Bloomers

AND LONG PANTS

Ranging in price from \$1.50 up.

See our Windows

Jabour Bros.
 Ltd.
 Phone 645.

PRINCE RUPERT FEED CO.

New Stock of

Garden and Field Seeds and Fertilisers

Pratt's Baby Chick Food and Poultry Supplies

BULKLEY VALLEY HAY AND GRAIN

Our Famous Edson Coal

in any quantities

also Telkwa Coal

Store Phone, 58. Trotter Dock Phone, 558

Canadian Pacific Railway

B. C. Coast Services

Sailings from Prince Rupert

To Ketchikan, Wrangell, Juneau, and Skagway—May 30, June 6, 13, 24, 27
 To Vancouver, Victoria and Seattle—June 3, 11, 18, 22, 29.

PRINCESS BEATRICE
 For Butedale, East Bella, Ocean Falls, Namu, Alert Bay, Campbell River, and Vancouver every Saturday, 11 a.m.

Agency for all Steamship Lines. Full information from—
 W. C. ORCHARD, General Agent,
 Corner of 4th Street and 3rd Avenue, Prince Rupert, B.C.

UNION STEAMSHIPS LIMITED

Sailings from Prince Rupert.

For VANCOUVER, VICTORIA, Swanson Bay, Alert Bay, etc., Tuesday, 5 p.m.
 For VANCOUVER, VICTORIA, Butedale, Alert Bay, etc., Saturday 9 a.m.
 For PORT SIMPSON, ALICE ARM, ANXO, STEWART, Wales Island, Sunday, 8 p.m.
 For Nanas River Points and Port Simpson, Thursday p.m.
 123 2nd Avenue. R. M. SMITH, Agent. Prince Rupert, B.C.
 Through tickets sold to Victoria and Seattle at a reduced rate and baggage checked through to destination.

Lawn Shears Garden Rakes

ICE CREAM FREEZERS in four sizes.
 Screen Doors in four sizes, galvanized or plain
 Adjustable Window Screens, will fit any window.
EASY VACUUM ELECTRIC WASHER

Thompson Hardware Co., Ltd.
 255 Third Avenue. Prince Rupert

Waterfront Whiffs

Field's Plans on Queen Charlotte Islands—Preparations for Approaching Canning Season—General Doings Along "Front"

The recently incorporated Crescent Packing Co. Ltd., of which James Field of this city is the principal, plans putting in a one-line cannery with a vacuum double seamer on Crescent Inlet near Lockeport, Moresby Island. The location includes an excellent water power site which will be developed to operate the plant. The company has also leased a location on Tasoo Harbor which is only a short distance away. A tram connecting the cannery with this location will give access to the extensive fisheries on the west coast of the island which have formerly been very much isolated while there are said to be a good supplies of pinkies and chums on the east side. There are also large beds of hardshell clams in the district which it is intended to can next fall. Associated with Mr. Field in the new venture is W. J. Jefferson, formerly with the Western Packers Ltd. and more recently with the Somerville Cannery Co. Ltd. The latter will be the active manager of the Island plant.

Some necessary redecking is being done under the overhead railway at the east end of the Canadian National docks. It is to be hoped that the railway will take a leaf out of the provincial government book and continue the work. A little fixing and cleaning up would be a convenience to the citizens as well as something better to look at on the part of the tourists who will shortly be here in force.

The United States Bureau of Fisheries plans an extensive campaign of salmon tagging this season. Such operations, besides at other points, will be carried out in Dixon's Entrance around Cape Fox between July 16 and 20. Rewards are offered for the returned tags which are used by the Bureau of Fisheries in assembling data as to movements of the fish.

An increasing number of return halibut tags is reported by Norman Freeman, local representative of the International Fisheries Commission. They are coming in now at a rate of anything from one to three a day and are from various banks.

COMMISSION TO MEET

It is understood that a meeting of the International Fisheries Commission will be held in June when a preliminary report on the condition of the North Pacific halibut fisheries will be presented by Dr. W. F. Thompson who has been directing investigations during the past several years. Dr. Thompson is compiling a history of the various banks and classifying the landings at the various ports according to their sources. There will be a great mass of data, both biological and statistical, in the report which will show clearly the more essential facts as to the condition and immediate needs of the fishery. Dr. Thompson points out that the information obtained is still far from complete but it is expected that it will probably provide a fair working basis for the avoidance of early depletion. The meeting will probably devise means for the continuation of the commission's investigation work.

The Prince Rupert Cannery at Tucks Inlet, although the season is not yet opened, is already a hive of industry. Considerable renovation work is being undertaken following the purchase of the plant by the Somerville Cannery Co. and in the warehouse a number of boats are being repaired and rebuilt.

The Pachena of the Prince Rupert Boat House fleet will leave here on June 10 to take up a packing charter out of the new B.C. Packers' cannery at Walker Island near Bella Bella. The Myfanwy is going into fishery patrol.

LAND ACT.

NOTICE OF INTENTION TO APPLY TO LEASE LAND.

In Prince Rupert Land Recording District of Prince Rupert, and situate 30 chains east of northwest corner of Lot 68, Range 3, Coast District. The Myfanwy is going into fishery patrol.

LAND ACT.

NOTICE OF INTENTION TO APPLY TO LEASE LAND.

In Range 3, Coast District, Land Recording District of Prince Rupert, and situate on the south shore of Evans Arm, B.C.

LAND ACT.

NOTICE OF INTENTION TO APPLY TO LEASE LAND.

In Range 3, Coast District, Land Recording District of Prince Rupert, and situate on the south shore of Evans Arm, B.C.

LAND ACT.

NOTICE OF INTENTION TO APPLY TO LEASE LAND.

In Range 4, Coast District, Land Recording District of Prince Rupert, and situate in vicinity of Captain's Cove, Pitt Island, B.C.

LAND ACT.

NOTICE OF INTENTION TO APPLY TO LEASE LAND.

In Range 4, Coast District, Land Recording District of Prince Rupert, and situate in vicinity of Captain's Cove, Pitt Island, B.C.

Heart Palpitation Dizzy, Sinking Spells

Mrs. M. A. Gagnon, Donatville, Alta., writes: "Some time ago I was very nervous, could not sleep at night, often had dizzy, sinking spells and palpitation of the heart, and was so run down I could not do my housework, but just leave everything and sit down. I spent a lot of money using medicine from the doctor, but it did not do me any good. At last a friend told me to use and after using a couple of boxes I was not the same woman. I began to feel so much better, and after a few more boxes I was in perfect health. I always recommend them to all those I know who are suffering from heart trouble."

Price 50c. a box at all druggists or dealers, or mailed direct on receipt of price by The T. Milburn Co., Limited, Toronto, Ont.

MILBURN'S HEART NERVE PILLS

those I know who are suffering from heart trouble."

Price 50c. a box at all druggists or dealers, or mailed direct on receipt of price by The T. Milburn Co., Limited, Toronto, Ont.

leaving only the "28" and "23" of the P.R.B.H. fleet free for the summer.

The halibut boat Johanna, Capt. John Wick, will be chartered to the B.C. Packers, as a packer she will leave early next week to start work out of Walker Island cannery. The Gammon & Watt boat Zanardi will pack for Lowe Inlet cannery and the new boat Bertha G., now being completed at the dry dock, will also be chartered for service of the B.C. Packers. The Azurite will also go on cannery charter.

JESSIE RETURNS

After an absence of nearly two months, the big schooner Jessie, Capt. Mike Meagher, arrived at the first of the week from the northern halibut banks with her first fare to unload here amounting to 40,000 pounds. While she was away she landed one catch up north. The vessel is now on dry dock for cleaning, painting and some hull work. It is expected she will clear again for the deep sea fisheries about next Monday or Tuesday.

The Edward Lipsett ways have been full all week with vessels undergoing minor hull work. The Elmer C., Eastern Point and Torberg were up Friday.

A New York concern has been in communication with fishery interests on this coast with a view to procuring herring and salmon scales for the manufacture of pearl essence. It is stated that very large quantities of the scales can be used and it is desired to make connections which would enable the company to locate at Pacific Coast centres of production.

H. N. Brocklesby, I. M. Fraser and Louis Smith of the biological station scientific staff paid a visit to the plant of the Rupert Marine Products at Tucks Inlet on Thursday.

Harry Daggett was back on duty at the government wharf on Thursday after having been confined to his home for a few days earlier in the week by illness.

EXCHANGE MOVES

When the fish buying magnates move house as they did this week some commotion might be expected and such was the case. Formerly upstairs in the government wharf, they picked up bag and baggage last Saturday and went down to more light and commodious quarters over the Nelson Trading Co. where they will in future hold their financial bouts. Each his pet chair in his arm, they migrated and are now ensconced daily under conditions which each report to be more favorable. Nor did they leave that fine map of the Canadian National Railway system behind for Angus Gillies followed behind and packed it down.

Bill Nelson, Charlie Starr, Bob Robertson, Lars Voge and Andrew Dybhave were guests of John Dybhave on a trip to Massett Inlet aboard the Royal Fish Co.'s service boat Delphinium over the holiday at the first of the week. The party left on Monday night and returned early Wednesday morning safe and sound despite seas which some reported mountainous and Bob Robertson's cooking which everybody said was terrible. As a chef it was agreed that he lost none of his reputation as a bank manager. One of the pleasures of the trip, however, was an automobile ride over the white sands of Graham Island's north shore. They didn't have time to look for gold among the black.

MINERAL ACT (Form F)

CERTIFICATE OF IMPROVEMENTS

NOTICE

"WESTERN HOPE" "TRIXIE" and "OLD KENTUCKY" Mineral Claims situate in the Skeena Mining Division of Prince Rupert District.

MINERAL ACT (Form F)

CERTIFICATE OF IMPROVEMENTS

NOTICE

"WESTERN HOPE" "TRIXIE" and "OLD KENTUCKY" Mineral Claims situate in the Skeena Mining Division of Prince Rupert District.

MINERAL ACT (Form F)

CERTIFICATE OF IMPROVEMENTS

NOTICE

"WESTERN HOPE" "TRIXIE" and "OLD KENTUCKY" Mineral Claims situate in the Skeena Mining Division of Prince Rupert District.

MINERAL ACT (Form F)

CERTIFICATE OF IMPROVEMENTS

NOTICE

"WESTERN HOPE" "TRIXIE" and "OLD KENTUCKY" Mineral Claims situate in the Skeena Mining Division of Prince Rupert District.

LAND ACT

NOTICE OF INTENTION TO APPLY TO LEASE LAND.

In Range 4, Coast District, Land Recording District of Prince Rupert, and situate in vicinity of Captain's Cove, Pitt Island, B.C.

LAND ACT

NOTICE OF INTENTION TO APPLY TO LEASE LAND.

In Range 4, Coast District, Land Recording District of Prince Rupert, and situate in vicinity of Captain's Cove, Pitt Island, B.C.

LAND ACT

NOTICE OF INTENTION TO APPLY TO LEASE LAND.

In Range 4, Coast District, Land Recording District of Prince Rupert, and situate in vicinity of Captain's Cove, Pitt Island, B.C.

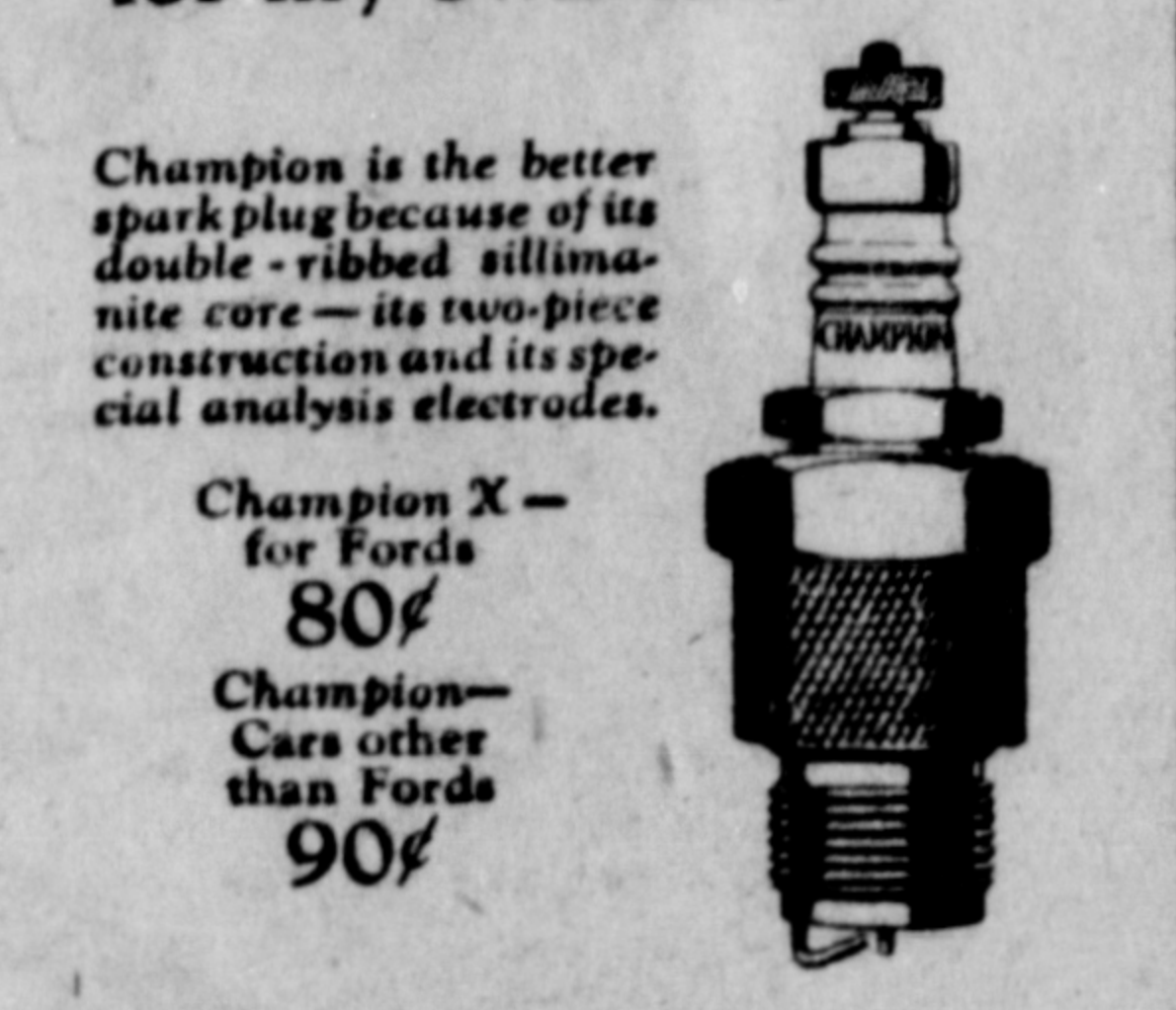
SHILOH FOR COUGHS

You can rely on SHILOH FOR COUGHS



The Farmer

I can always count on Champions—they're dependable. That's why I use them in all my engine-driven farm equipment as well as for my own car.



CHAMPION Spark Plugs

WINDSOR, ONT. A CANADIAN-MADE PRODUCT

Berry, the Bradbury & Yelf seineboat Bethune left last night for the west coast of Vancouver Island where she will be engaged for the next two or three months in the pilchard fisheries. The Reville, of the same fleet, is now engaged in packing salmon between Hippo Island and Butedale.

BRANDY NEWELL COMING

It will undoubtedly be pleasant news for many to hear that Capt. "Brandy" Newell, one of the most popular men who ever baited a halibut hook out of this port and who left two or three years ago for the south to take up residence, is coming back for a short time at least. He was scheduled to leave Vancouver last night for here on a new seine boat which has just been built for him in the south. He should be here some time next week on the new vessel which is some sixty feet long and which is powered with a 75 h.p. Atlas-Imperial diesel engine. After a brief stay here, he will proceed to engage in salmon packing between Hippo Island and Butedale. Before he promised his wife to give up the sea, and as the most of his friends thought it would be, it has turned out to be a temporary promise, the esteemed "Brandy" we don't know how he ever got that appellation, owned and skippered the halibut boat Attil, still operating out of this port.

R.M.P. power tug P.R.T., Capt. Harris Kerr, is now at Lowe Inlet putting in a hopper for the cannery. The F. H. Phippen is at the dry dock having a new rudder installed. The M.T.3 Capt. Reg. Green, made a mystery trip this week and the Tide Rip is ferrying between town and Tucks Inlet.

NUNAN A DIRECTOR

Harry C. Nunan of Ketchikan, manager of the New England Fish Co.'s establishments in Southern Alaska and several years ago manager of the Atlin Fisheries here, has recently been appointed to the directorate of the New England Fish Co. The honor which has been conferred upon him will be a matter of congratulation to his many local friends.

Mr. Nunan comes of a family which has been identified with the fisheries at Cape Porpoise, Me., for over fifty years. He entered the employ of the New England Fish company in 1903. In 1911 he was transferred from the Boston office, where he had been accountant and secretary to the treasurer, to become associated with Mr. Hager at Vancouver, and in 1913 was given charge of the Atlin Fisheries, Ltd., at Prince Rupert, of which he was manager until the close of 1918. On the retirement of Henry Wilk from the management of the Ketchikan branch of the New England Fish company, because of ill health, he was succeeded by Mr. Nunan in January, 1919; and since then Mr. Nunan has remained in charge of the Southeast Alaska operations, which have been gradually extended through the addition of canneries and growth of other operations at Ketchikan and Noyes Is-

LAND ACT

NOTICE OF INTENTION TO APPLY TO LEASE LAND.

In Range 4, Coast District, Land Recording District of Prince Rupert, and situate in vicinity of Captain's Cove, Pitt Island, B.C.

LAND ACT

NOTICE OF INTENTION TO APPLY TO LEASE LAND.

In Range 4, Coast District, Land Recording District of Prince Rupert, and situate in vicinity of Captain's Cove, Pitt Island, B.C.

LAND ACT

NOTICE OF INTENTION TO APPLY TO LEASE LAND.

In Range 4, Coast District, Land Recording District of Prince Rupert, and situate in vicinity of Captain's Cove, Pitt Island, B.C.

LAND ACT

NOTICE OF INTENTION TO APPLY TO LEASE LAND.

In Range 4, Coast District, Land Recording District of Prince Rupert, and situate in vicinity of Captain's Cove, Pitt Island, B.C.

LAND ACT

NOTICE OF INTENTION TO APPLY TO LEASE LAND.

In Range 4, Coast District, Land Recording District of Prince Rupert, and situate in vicinity of Captain's Cove, Pitt Island, B.C.

SHILOH FOR COUGHS

You can rely on SHILOH FOR COUGHS

Week-end Week-end

Specials

on Sale

Saturday and Monday

Holeproof Pure Silk Hose, reg. \$1.75 95c
 Ladies' Cotton Bathing Suits 95c
 Pure Silk Spun, all shades 95c
 Unbleached Cotton, 6 yards \$1.00
 Jap Crepes, all colors, best quality, 5 yards \$1.00
 Rayon Silk Vests 50c
 Misses' Gingham Dresses 95c
 Rayon Ginghams, 2 yards 95c
 Bloomers, Robette style, pair 50c
 Ladies' Hose in several colors, pair 25c
 Finest Broadcloth in various stripes, reg. \$1.50, yard 95c
 Curtain Muslins, various patterns, 5 yards \$1.00

ALL SPRING COATS AT SPECIAL REDUCTIONS

H. S. Wallace Co.
 Ltd.
 Phone 9. 3rd Avenue and Fulton St.

DENTIST

Dr. J. R. Gosse

Helgerson Block

X-RAY SERVICE

Phone 686

9 a.m. to 6 p.m. Evening Appointments

CHIROPRACTOR

D. A. McMillan

Palmer Graduate

Room 6 and 7, Exchange Block. Phone 691

Neglected Eyes

NEGLECT is doubtless the cause of most of the ills that afflict humanity. This is so self evident that it seems hardly necessary to tell you. If your eyes are giving trouble, have them attended to—and at once. OF ALL absurdities in the kingdom of foolishness, surely the loss of eyesight through neglect is the most inexcusable. DON'T lose health and efficiency through neglect. Come and see!

Fred Joudry

Registered Optometrist and Optician

Room 3 Smith Block Phone 763

LINDSAY'S

Cartage and Storage

Phone 63

Cartage, Warehousing, and Distributing. Team or Motor Service. Coal Sand and Gravel. We Specialize in Piano and Furniture Moving.