



Imported? NO! It's both older and better. TEN YEARS OLD. This advertisement is not published or displayed by the Liquor Control Board or by the Government of British Columbia.

Meat Department Specials

- Shoulder Pork, lb. 25c
- Pork Chop, Loin, lb. 35c
- Pork Sausage, 2 lbs. 35c
- Veal Stew, 2 lbs. 25c
- Veal Chops, lb. 25c
- Pickled Pork, lb. 25c
- Bacon, sliced, lb. 45c
- Ayrshire Bacon, lb. 35c
- Eggs, Pullets, 3 doz. for \$1.00
- Eggs, Firsts, 3 doz. for \$1.15

MUSSALLEM'S Phone 18 Phone 84



Have Your Eyes Examined

Poor eyes and poor glasses are a pitiful combination. Good glasses will make good eyes of poor eyes.

If your present glasses do not suit your eyes for any reason, you are criminally negligent of your future if you do not secure the proper glasses at once.

Lowest prices. Expert service.

A. E. IRELAND
Graduate Optometrist
319 Third Avenue.
Opposite G.W.V.A.

WOOD

Dry Jack Pine, Cedar, Birch and Spruce

Per load \$6.50
Per half load \$3.50
Per sack 50c

Firefighters, 48 for \$1.00 delivered.

Hyde Transfer

139 Second Avenue Phone 580 Night or Day WE BUY BOTTLES.

Dr. Alexander

Smith Block Phone 575 DENTIST

CAMBRIDGE IS FAVORED CREW

LIGHT BLUE APPEARS TO BE MORE EVENLY BALANCED THAN OXFORD FOR FAMOUS ANNUAL BOAT RACE ON THE THAMES

LONDON, March 24.—(Canadian Press Despatch).—The great annual boat race between Oxford and Cambridge, to be rowed over the time-honored stretch of the Thames from Putney to Mortlake, on Saturday afternoon, April 2, will dramatically climax the 10 weeks of humdrum but severe training undergone by both crews.

"Rowed" gives a poor indication of the thrilling nature of the race, which is a gruelling struggle exerting towards

the close of the 4 1/4 mile course every ounce of stamina the crews possess. Impartial critics believe Cambridge's crew this year a shade better than Oxford's, although conceding that the Oxford crew's training form may be improved by the day of the race. Cambridge has won the last three races in succession, and in fact every one since the war except one, in 1923. On the whole series, however, Oxford has a majority over the Light Blues, having won 40 to Cambridge's 37. The other race bringing the total to 78 was a tie, in 1877. The first contest was in 1829, but the race did not become an annual event until some years later.

CONTESTANTS

The Light Blue crew is exceptional this year for its "length," or reach. R. J. Elles, stroke, is a stylist with excellent rhythm. About a month before the race he was kept from training by indisposition, but it was believed that he would be fit for the actual race, and would return to training before the day approached. The crew as a whole is rhythmical, with an impression of real "stride" and their rowing is easy. J. A. Brown, the Old Blue who is again coxswain, has steered Cambridge to a win in each of the last three years.

The Oxford crew is not so even as the Light Blue. Their defeat last year was very unfortunate, caused as it was by the collapse of H. R. A. Edwards, old Westminster boy, who was a passenger for the last half of the race. One of the Dark Blue's main hopes this year is E. T. C. Edwards, Christ Church, who at Number seven has been in training at least, a little below the high standard expected of him. Kingsbury and Rathbone, six and five respectively, are as good as the six and five of Cambridge, and with the aid of Edwards, if the latter regains his form, will turn the crew into a really fast eight, according to the experts.

Hundreds of thousands of people will watch the race, from all conceivable points of vantage along the whole course, and the celebration in London's east End, particularly if Oxford wins, will be a Boat Race Night to be remembered for a long time.

THE BOATS

The Oxford boat is practically the same as that used by Oxford in last year's race, and is an abandonment of the extreme stream-line type of boat of earlier post-war days. It has been designed for a crew averaging 174 pounds. The Cambridge boat is on the orthodox lines of recent years and is of such dimensions that there is no fear of the Cambridge crew being underpowered. It has been designed for a crew averaging 177 pounds.

The race this year will be umpired this year by Col. G. D. Burnell, old Oxford oarsman, who succeeds F. I. Pittman, famous Cambridge oar of days gone by, who umpired the race for the last quarter of the century. Col. Burnell, like his predecessor, has been connected with the Henley Regatta for many years. He rowed for Oxford from 1895 to 1898 and was in the Magdalen College crew in 1895. He also rowed in the historic race between Leander and Cornell, when Leander was left at the post.

The crews, in order and weights, are as follows:

OXFORD

- N. E. Whitting (Worcester) bow, 160 lbs.
- P. Johnston (Magdalen) 162 lbs.

Bargains FOR THIS WEEK

1/4 lb. tin Malkin's Best Strawberry Jam for 65c, with 8 packages Quaker Corn Flakes for \$1.00. All for \$1.65.

2 lb. Creamery Butter in bulk for 95c with a 5 lb. pail Silver Leaf Lard. The 2 for \$2.00

1 50c pkg. Som-Mor Graham Wafers; 1 65c pkg. Supreme Coffee. The 2 for \$1.00

Fresh Milk Daily Delivered

B.C. Butchers & Grocers Limited Phones 45 and 574

MILK

From Bulkley Valley FRESH MILK AND WHIPPING CREAM Quality and Service Valentin Dairy Phones 656 and 657

ANGER, the TAILOR

Suits made to order, in our shop as low as \$50 223 Sixth Street

Dr. J. R. Gosse DENTIST Helgerson Block

X-Ray Service. Open Evenings Phone 686.

GEORGE RORIE CHARTERED ACCOUNTANT AND AUDITOR Phone 387 243 Second Avenue West, Prince Rupert

Breakfast

best meal of the day



Two Kinds

You can get Quaker Oats in two forms—the large, plump whole flake or the half flake, rolled thin, and partly cooked. Both are of the same Quaker Quality, famous in 58 countries.

If you wish to make porridge while you boil the coffee, or make the toast, use Quick Quaker. It cooks in 3 minutes.

Physicians urge satisfying breakfasts because in the forenoon most people are called upon to do two-thirds of their most important work.

To enable body and brain to reach their highest capacities in the shortest time, digestion must be easy and quick.

The delicious taste of Quaker Oats invites digestion. Gratefully warm, it is welcomed by the stomach. It assimilates quickly and its bulk and tender bran assist in the assimilation of other food. They aid in a function which doctors say is the first essential to good health.

And Quaker Oats sustains throughout the day's most vital working hours. No other cereal has such perfect balance of food elements. It contains 16% of the tissue builder, protein; 65% of the energy producer, carbohydrates; and the all-important vitamins and mineral salts.

If you are not using Quaker Oats at breakfast, start now. You will take up your morning work more eagerly and will feel more vigorous and alert throughout the day.

Quaker Oats

—you have always known

Quick Quaker

—cooks in 3 minutes

- 3—T. W. Shaw (Christ Church) 172 lbs.
- 4—J. W. D. Tomson (University) 182 lbs.
- 5—W. Rathbone (Christ Church) 181 lbs.
- 6—H. T. Kingsbury (Queens) 187 lbs.
- 7—E. C. T. Edwards (Christ Church) 173 lbs.
- W. S. Llewellyn (Balliol) stroke, 162 lbs.
- *Sir James Croft (Brisenose) cox, 124 lbs.

CAMBRIDGE

- Hon. J. S. Maclay (First Trinity) bow, 152 lbs.
- 2—T. E. Letchworth (Christ's) 164 lbs.
- 3—J. C. Holcroft (Pembroke) 165 lbs.
- 4—R. Deesly (First Trinity) 172 lbs.
- 5—L. V. Bevan (Lady Margaret) 179 lbs.
- 6—J. B. Bell (Jesus) 178 lbs.
- 7—E. K. Tubbs (Caius) 165 lbs.
- R. J. Elles (Trinity Hall) stroke, 160 lbs.
- *J. A. Brown (Caius) cox, 124 lbs.
- *An Old Blue.

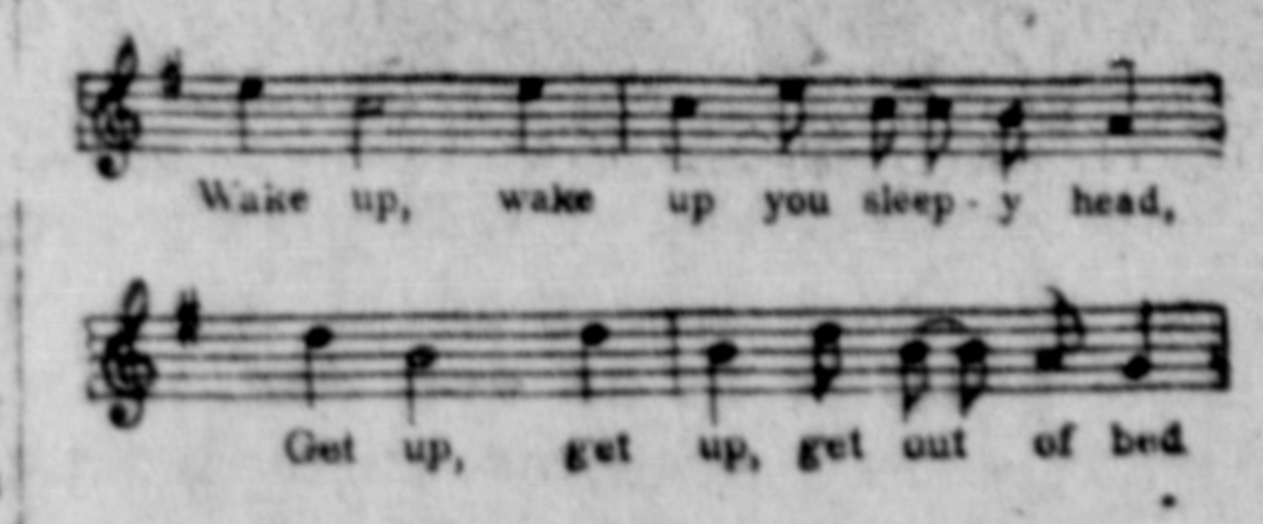
SPORT CHAT

Tomorrow night in Vancouver the Varsity Grads of Toronto will meet the Fort William hockey team in the first game for the Allan Cup. The Toronto team had little difficulty in disposing of all competitors in the eastern part of Canada while the Thunder Bay team have met and defeated the provincial champions of the four western provinces. The games should be evenly contested and will probably be witnessed by the largest crowds attending any hockey fixtures in Vancouver this season. Fort William should be used to the Vancouver rink now, having defeated Trail in two well contested games and perhaps the Grads will be handicapped for this first tussle. However, if they are in the same class as their competitors, this should count for little as both teams will be playing on neutral ice.

The Maple Leafs basketball team plays its first game with Smithers tonight. Little is known of the interior team's ability, but it would be a distinct surprise and shock to local fans if the Maple Leafs were defeated in either of the two scheduled games. Granby, it is said, will send a team here to play the winners of the series sometime in April.

Turfgoers travelling to the famous old Epsom Downs, near London, at the opening of racing there in April will find the new stand to be one of the finest race course buildings of any in the world. The modest stand which until last year attempted to accommodate the enormous crowds gathered to watch the running of the blue riband of the turf, was more than 100 years old. Directly last year's Derby had been decided the work of demolition began. Erected partly on the old site, but extended west and east, the new stand has been specially designed to give a more comprehensive view of the course than the old. The building is splayed round to give a more frontal view of the straight, and it is estimated

that practically every person in the stands will be able to see the complete race for the eDrby from start to finish. An idea of the extended character of the building, on which hundreds of workmen have been busy for months past, is indicated by the fact that the approximate length is 700 feet, or twice the length of the old stand. There will be over two hundred private boxes, and so much has the general accommodation been increased that there will be room for 20,000 spectators, exclusive of the available lawn space. The Royal apartments, the designs of which have been specially approved by the King and Queen, are embodied in the chief stand, together with the accommodation for the Jockey Club and the members, the Royal box being immediately opposite the winning post. Each section of the building is being constructed on self-contained lines, with separate luncheon rooms and general accommodation. Special consideration has been given to the chief requirement of the spectators, which is to see the racing in comfort. For this purpose, and to enable an uninterrupted view of the racing to be obtained, all the spans of the main girders have been kept six feet apart, while the lowest tier is twelve feet above the level of the course.



Models \$1.75 to \$5.50

A Trusted Name

An alarm clock that isn't dependable isn't anything. Ingersoll Alarm Clocks like Ingersoll Watches are dependable. The name Ingersoll stands for dependability.

Models \$1.75 to \$5.50, including Radiolites that tell time in the dark.

INGERSOLL WATCH CO. INC.

49 St. Catherine St. East, Montreal, P. Q. Ingersoll

The **Great Sale** of the **MONTREAL IMPORTERS** continues **All This Week**

WESTHOLME THEATRE
TONIGHT ONLY, 7 and 9 p.m.

"The Wilderness Woman"

AILEEN PRINGLE, LOWELL SHERMAN, ROBERT CAIN, CHESTER CONKLIN, HENRY VIBART, HARRIET STERLING and others.

COMEDY — "THANKS FOR THE BOAT RIDE" AESOP'S FILM FABLES

Admission 35c and 10c