

## We Eat No Meals; Ride No Cars

WHEN you hire us to do the family washing, you are not put to the expense or bother of feeding us. We eat nothing! Neither do we ask you to pay our carfare. Instead we call for and deliver your washing. We buy our own soap, starch and bluing. Heat our own softened water. Use our own electricity, too. There's no "picking-up" after us. We take all the messy work out of your home, giving you an extra day to do the things you like to do! Yet you'll find our charges most reasonable—considerably less than it would cost you to do the same work at home. Try us, and see!

The  
LAUNDRY  
Does it best  
**CANADIAN  
LAUNDRY**  
and  
Dry Cleaners  
Phone 8

### HEALTH FOLLOWS

CHIROPRACTIC CORRECTS  
PRESSURE ON SPINAL  
NERVES IN DISEASES OF  
THE FOLLOWING ORGANS:

A SOUND INVESTMENT  
IN HEALTH  
Produces a Bigger Dividend  
than the safest bond

**W.C. Aspinall**  
CHIROPRACTOR  
6 Exchange Block  
Green 241

**'Demers'**  
are now showing  
**Billie Burke  
Sport  
Dresses**  
Phone 27 P.O. Box 327

**Dr. Alexander**  
Smith Block  
Phone 575  
**DENTIST**

**Radio Radio**  
As well as specializing on the  
No. 17 Radiola, we wish to draw  
your attention to the Radiola No.  
16. It is another of the up-to-  
date, last six months models, a  
six tube receiver.  
Price, less Radiotrons . . . \$95.00  
Price, with Radiotrons . . . \$114.25  
Price, complete with Radiotrons  
and 100-A Loudspeaker . . . \$153.75  
F. W. CHANDLER  
Exclusive Wholesale Dealer for  
Radiolas  
Office: 318 Sixth St.  
Box 645 Prince Rupert, B.C.

## EXTENSION OF LOGGING THIS YEAR MASSETT

Poles to be Got Out by Three Separate Concerns and Logs at Buckley Bay

With three concerns contemplating institution or extension of operations, a substantial revival in the logging industry of Massett Inlet is in prospect.

A. E. Johnston, who arrived in the city from the Islands on the Prince John this trip and sailed this afternoon on the Venture for Vancouver, states that he is about to re-open a camp on Massett Lake, about eight miles from Port Clements, which he formerly operated for the Massett Timber Co. The full equipment is already on the ground and Mr. Johnston expects to be back in the north in about two weeks' time to get operations started. He will cut either for the Big Bay Lumber Co. of Prince Rupert or the Pacific Coyle Navigation Co. of Vancouver. About twenty-five men will be employed.

It is also reported from the Islands that the Baxter Pole Co., already operating extensively there and employing about fifty men in a camp near Port Clements, has acquired new pole limits about four miles in the bush from Port Clements where a second camp will be opened up. A truck road is to be built into these limits and twenty men arrived on the Prince John this trip from Vancouver to be engaged in its construction.

Another operation will be that of Edward Crawford who has made arrangements for the sale of the Pacific Coyle Navigation Co. for delivery south of some five million feet of logs which are already felled and bucked near Buckley Bay. These logs, originally cut for the Massett Timber Co., are now being taken out of the bush and boomed, about forty men being employed. It is possible Mr. Crawford

## This Week's Specials

Swift's Back Bacon, plain or peppered; taking the whole side or half, per lb. . . . . 35c  
Milk, any brand, dozen . . . \$1.40  
Per case . . . . . \$5.50  
Flour, any brand, 49 lb. sack . . . \$2.60  
24 lb. sack . . . . . \$1.35  
Robin Hood China Oats, 2 pkgs. . . 75c  
Fresh Ground Coffee, 3 lbs. . . \$1.25  
This is the finest blend of coffee for the money! Order 3 lbs. today.  
Fine Ontario Cheese, 2 lbs. . . 65c  
Seedless Raisins, 2 lbs. . . . 25c  
Nabob Jelly Powder, doz. . . 75c  
Heinz Tomato Soup, small, 2 tins . . . 25c  
Medium, 2 tins . . . 35c  
Welch's Grape Jam, 1 lb. tin 25c  
2 lb. tin . . . . . 45c  
C. & B. Sockeye Salmon in 1 lb. tin. Special, 2 for . . . 65c  
Holland Herrings, per keg \$1.50  
Nedwegian Norse Crown Fat Herrings in tomato sauce, per tin . . 20c  
Norse Crown Fresh Mackerel, tin . . . 30c  
Norse Crown Soused Mackerel, tin . . . 30c  
Norse Crown Kipperd Herring, tin . . . 20c  
Saanich Clams, 2 tins . . . 35c  
Large Oranges, dozen 40c & 50c  
Bananas, 3 lbs. . . . . 50c

## Alberta Market

P. GAMULA, Proprietor  
Fifth Street. Phone 208

H. S. WALLACE CO. LTD.

MERCURY PURE SILK

## Hose

In all latest shades.  
Guaranteed Pure Silk  
The best value at the price

**\$1.25**  
pair.

Large Front Room to Rent—  
Apply Office

**H. S. Wallace Co. Ltd.**  
Phone 9

3rd Avenue and Fulton



Have You taken your Nerve Food To-day?  
**DR. CHASE'S NERVE FOOD**

may receive further orders.  
The Big Bay Lumber Co. is reported to be in the market for five million feet of logs this season to be cut in its new Prince Rupert sawmill which will soon start operations. These logs will probably be supplied from the Queen Charlotte Islands.

\*\*\*\*\*  
**LOCAL NEWS NOTES**  
\*\*\*\*\*  
Passengers disembarking here this afternoon from the steamer Princess Mary included H. J. Chalk, J. Gillespie, Mr. O'Neill, E. Heaphy, S. H. Walley, P. McLeod and A. Gooch.

O. Bernhoff, fish buyer for the National Independent Co. at Ketchikan and several years ago here in a similar capacity, left on the Princess Mary this afternoon for Ketchikan, having arrived earlier in the week after a trip East.

Inspector R. Field, R.C.M.P., lately of Fernie, was a passenger on the Princess Mary this afternoon going through to Dawson where he will assume command of the Yukon district in succession to the late Inspector T. G. Shoebottom, who died recently.

## Cunard Anchor Anchor-Donaldson LINES

**CANADIAN SERVICE**  
From Halifax  
To Londonderry and Glasgow  
Athenia . . . Mar. 19  
To Plymouth-Havre-London  
Ausonia . . . Mar. 12  
To Queenstown and Liverpool  
Antonia . . . Mar. 26  
Andania . . . Apr. 9

From New York  
To Queenstown and Liverpool  
Carmania . . . Mar. 3  
Andania . . . Mar. 10  
To Cherbourg and Southampton  
Aguilana . . . Mar. 21  
Berenaria . . . Apr. 4  
To Londonderry and Glasgow  
Cameronia . . . Mar. 17  
To Plymouth-Havre-London  
Alaunia . . . Mar. 3  
Ausonia . . . Mar. 10

From Boston  
To Queenstown and Liverpool  
Caronia . . . Mar. 18  
Carmania . . . Apr. 1  
Money orders, drafts and Travellers' Cheques at lowest rates. Full information from local agents or Company's Offices, 622 Hastings St. W., Vancouver, B.C.

## Cash and Carry Grocery

Corner Fulton and Sixth Ave.

**SAVE THE COPPERS**  
Sugar, Granulated, 10 lbs. . . 75c  
Milk, any brand, per tin . . . 12c  
Tea—Malkin's Best, Blue Ribbon, or Nabob, lb. . . . . 70c  
Bulk Tea—Excellent quality, per lb. . . 50c  
Coffee—Great West, Malkin's Best, Nabob, lb. . . . 65c  
Coffee—Fresh Ground, per lb. . . 40c  
Creamery Butter, per lb. 43c-46c  
3 lbs. in one block . . . \$1.25  
Salt Pork, per lb. . . . 32c  
Bacon, Swift's Premium, back, special per lb. . . 42½c  
Picnic Hams, per lb. . . 22c-24c  
Eggs, strictly fresh, 3 doz. \$1.18

**VEGETABLE SPECIAL**  
10 lb. Carrots . . . . . 30c  
10 lb. Turnips . . . . . 30c  
10 lb. Potatoes (Ashcroft) . . . 30c  
4 lb. Onions . . . . . 30c  
34 lbs. for . . . . . 90c

Tomatoes, large tins, 6 for . . 95c  
Pineapple, Singapore, 7 for 95c  
Canned Fruits, assorted, 3 for 80c  
Soap, Fels Naptha, per bar . . 8c  
Royal Crown Soap, per carton 25c  
Fresh line Green Vegetables every boat at attractive prices

**FRESH MILK AND CREAM IN FRIGIDAIRE**

## CAN'T PROMISE RAILWAY HERE

Vice-President of C.P.R., Visiting City Today, Makes no Statement

"I am sorry that I cannot promise Prince Rupert a railroad this year," facetiously remarked Grant Hall, vice-president of the Canadian Pacific Railway, in declining to comment on any intentions that his concern might have with regard to developments on the Pacific Coast. Mr. Hall, who was here on his way to Alaska on the Princess Mary this afternoon added that he had been to California for five weeks on holiday, that he was a long way from headquarters and that he had nothing to say with regard to the relation of his company to Prince Rupert or Stewart.

"We will have to see what Mr. Brownlee is going to do first," remarked Mr. Hall, referring to the Premier of Alberta. This was in answer to a question regarding possible Pacific Coast rail outlet for the Peace River.

Mr. Hall, who is being accompanied on his trip to Alaska by Capt. J. W. Troup, manager of the British Columbia Coast Steamship Services, was taken in charge by Wallace C. Orchard, local C.P.R. general agent and shown around the city. The distinguished railway man had a brief audience with a committee from the Board of Trade consisting of M. P. McCaffery, G. W. Nickerson and W. O. Fulton. An interview with him was also sought by W. J. Van Buskirk.

## OUTBOUND GRAIN FROM VANCOUVER

Amount Handled During Week Less Than for Several Previous Periods

VANCOUVER, Feb. 25.—The amount of grain handled outbound at this port was less than for several previous weekly periods. Shipments were: Witram for Bremen 37,333 bushels. Kinwood for Grimsby 29,867 bus. Farkorth to Falmouth for orders 291,650 bushels. Holystone for Rotterdam 299,988 bus. Osiris for Hamburg with option of Bremen 45,567 bushels; for Mediterranean ports 456,799 bushels. Vulcan City for London 56,000 bushels; for Liverpool 44,800 bushels. Coyom Maru for Osaka 19,667 bushels; for Kobe 140,000 bushels. Africa Maru for Yokohama 48,333 bushels. Paris Maru for Shanghai 79,167 bushels. Lyndareus for Yokohama 33,334 bushels. Helyel Maru for Yokohama 17,404 bushels; for Kobe 136,666 bushels. Marie Baake for Callao 37,333 bushels. Point Montalera 20,000 for Puerto Colombia.

## DEPARTMENT OF PUBLIC WORKS

**BELLA COOLA LOCK-UP**  
SEALED TENDERS, endorsed "Tender for Lock-up Bella Coola," will be received by the Minister of Public Works up to 12 o'clock noon of Monday, the 19th day of March, 1928, for the erection and completion of a standard Lock-up building at Bella Coola in the Mackenzie Electoral District, B.C.

Plan, specification, contract, and forms of tender may be seen on and after the 24th day of February, 1928, and further information obtained at the Department of Public Works, Parliament Buildings, and at the offices of the Government Agents, Vancouver and Prince Rupert, and the office of the Public Works Department, Bella Coola.

Copies of plans, specifications, etc., can be obtained from the Department on payment of a deposit of Ten Dollars (\$10.00) which will be refunded on return of the plans, etc., in good condition.

The lowest or any tender not necessarily accepted.

P. PHILIP, Deputy Minister and Public Works Engineer, Parliament Buildings, Victoria, B.C.

## CANADIAN PACIFIC

**SAILINGS TO EUROPE**  
MAKE RESERVATIONS NOW

**FROM SAINT JOHN**  
To Belfast, Liverpool  
Mar. 16, Apr. 13 . . . . . Montclair  
Mar. 30 . . . . . Montclair  
To Glasgow, Liverpool  
Mar. 9, Apr. 6 . . . . . Montrose  
Mar. 23, Apr. 20 . . . . . Minnedosa  
Mar. 29 . . . . . Melita  
To Glasgow only

To Cherbourg-Southampton-Antwerp  
Mar. 15 . . . . . Metagama  
Mar. 22, Apr. 19 . . . . . Marloch  
Apr. 5 . . . . . Montclair  
To Cherbourg-Southampton-Hamburg  
Apr. 12 . . . . . Metagama

Apply to Agents everywhere or  
J. J. FORSTER  
S.S. General Pass. Agent,  
C.P.R. Station, Vancouver.  
Telephone  
Seymour 2630

## WAS SO NERVOUS, and SHORT OF BREATH COULD HARDLY SLEEP

Mrs. Louise Baglin, Golden Lake, Ont., writes:—"For several years I was greatly troubled with my heart. I was so nervous and short of breath I could hardly sleep at night, and if I did sleep for a while I had bad dreams.

"I managed to keep at my work, somehow, until I began to have dizzy spells which got so bad I had to give up. I used many kinds of medicine, but found no help until I got a box of

After the first box I found a great change, and after two boxes I was as well as I could be.

"I told my mother, who had choking sensations, about them and they helped her greatly."

Price 50c, a box at all druggists and dealers, or mailed direct on receipt of price by The T. Milburn Co., Limited, Toronto, Ont.

## OLD COUNTRY FOOTBALL

**ENGLISH LEAGUE**  
Division I.  
Blackburn 2, Tottenham 1.  
Bolton 0, Huddersfield 1.  
Cardiff 2, Manchester United 0.  
Derby 2, Sheffield United 1.  
Liverpool 3, Everton 3.  
Leicester 3, Arsenal 2.  
Middlesbrough 1, Birmingham 1.  
Preston 1, Burnley 0.  
The Wednesday 0, Newcastle 0.  
Sunderland 2, Aston Villa 3.  
West Ham 1, Bury 2.  
Division II.  
Blackpool 3, Notts County 3.  
Chelsea 0, Southampton 2.  
Clapton 3, Stoke City 2.  
Grimsby 1, Hull City 1.  
Leeds 2, Fulham 1.  
Manchester City 2, Preston 2.  
Notts Forest 0, Swans 2.  
Port Vale 2, Wolverhampton 2.  
Reading 1, Oldham 0.  
South Shields 0, Barnsley 0.  
West Bromwich 0, Bristol City 0.

**SCOTTISH LEAGUE**  
Division I.  
Boness 2, Airdrieonians 2.  
Celtic 1, Aberdeen 1.  
Dunfermline 1, Hamilton 2.  
Falkirk 5, Dundee 1.  
Hibernians 0, Clyde 1.  
Motherwell 0, Hearts 3.  
Partick-Cowdenbeath not played.  
Queen's Park 5, Kilmarnock 3.  
Raith Rovers-Bangers not played.  
St. Johnstone 0, St. Mirren 0.

## DECISION IS GIVEN TO TOD MORGAN IN BOUT AT VANCOUVER

VANCOUVER, Feb. 25.—Tod Morgan of Seattle, junior lightweight champion of the world, and Ritchie King of California, fought ten rounds here last night, Morgan winning the decision. The title was not at stake.

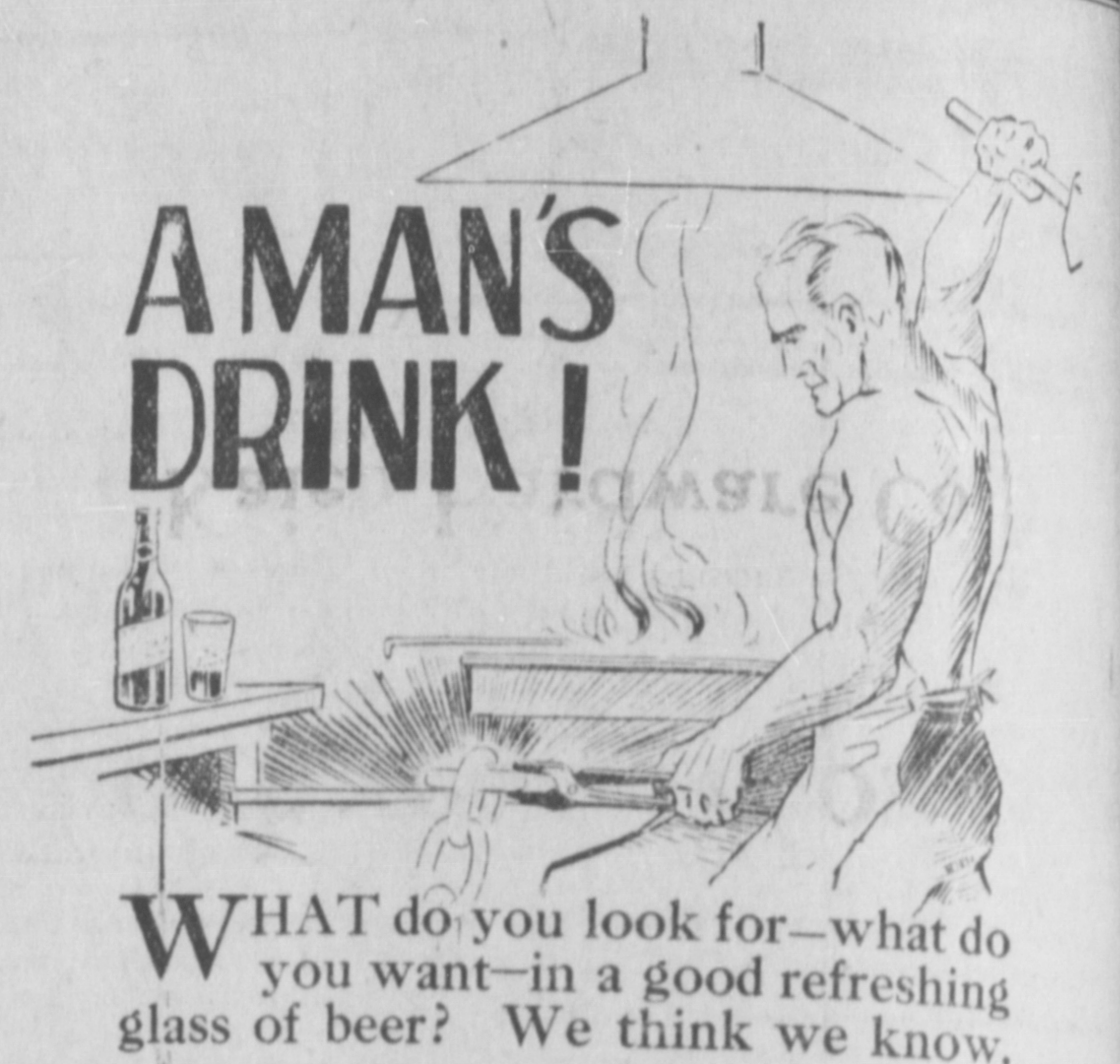
Alexander Gooch returned to the city on the Princess Mary this afternoon following a combined business and pleasure trip south.

Aubrey Simmons, Canadian customs officer at Skagway, was a passenger aboard the Princess Mary this afternoon returning north following a holiday trip outside.

There were just about one hundred passengers aboard the steamer Princess Mary which was in port this afternoon bound for Alaska. The last included the vanguard of the Yukon & White Pass Railway & Navigation Co.'s staff returning north after having spent the winter outside.

## Market Prices

Prices current are as follows:  
**LARD**  
Pure . . . . . 25c  
Compound . . . . . 20c  
**EGGS**  
B.C. Fresh pullets . . . . . 40c  
B.C. Fresh firsts . . . . . 45c  
B.C. Fresh, extras . . . . . 50c  
Local new laid . . . . . 55c  
**FISH**  
Smoked kippers, lb. . . . . 15c  
Kipperd salmon, lb. . . . . 25c  
Smoked black cod, lb. . . . . 20c  
Finnan haddies, lb. . . . . 25c  
**MEATS**  
Fowl, No. 1, lb. . . . . 38c and 40c  
Roasting chicken, lb. . . . . 45c  
Ham, sliced, first grade . . . . 50c  
Ham, whole, first grade . . . . 35c  
Ham, picnic, lb. . . . . 22½c  
Cottage rolls, lb. . . . . 29½c  
Bacon, back, sliced . . . . . 50c  
Bacon, side . . . . . 50c to 60c  
Pork, dry salt . . . . . 35c  
Ayrshire bacon, lb. . . . . 35c  
Veal, shoulder . . . . . 25c  
Veal, loin . . . . . 40c  
Veal, leg . . . . . 35c  
Pork, shoulder . . . . . 28c  
Pork, loin . . . . . 40c  
Pork, leg . . . . . 35c  
Beef, pot roast . . . . . 15c to 20c  
Beef, boiling . . . . . 12½c to 15c  
Beef, steak . . . . . 30c to 45c  
Beef, roast, prime rib . . . . 32c  
Lamb, chops . . . . . 50c  
Lamb, shoulder . . . . . 50c  
Mutton, leg . . . . . 40c  
Lamb, leg . . . . . 48c  
Mutton, chops . . . . . 40c  
Mutton shoulder . . . . . 40c  
**BUTTER**  
Brookfield, Shamrock and Woodland, lb. . . . . 50c



**A MAN'S DRINK!**  
WHAT do you look for—what do you want—in a good refreshing glass of beer? We think we know.  
You want first a Beer that "gets home"—that follows its course straightway to that thirsty spot. You want a Beer that's full of life and vigor, bracing, stimulating. You want a Beer that will really satisfy you. All right, then, Milwaukee Lager is the Beer for you. Try it today. You'll find it wholesome, pure and nourishing.

Why not order a case today? For sale at Government Liquor Stores and Beer Parlors. Delivery free to any part of city.  
**WESTMINSTER BREWERY LTD**  
New Westminster, B.C.

This advertisement is not published or displayed by the Liquor Control Board or by the Government of British Columbia.

## WESTHOLME THEATRE TONIGHT ONLY

at 7 and 9

## "CHANG"

The wonder melodrama of the jungle. A startling photograph in which is shown a ruthless, smashing, crashing avenger and destroyer. Five hundred native hunters, four hundred elephants, tigers, leopards, pythons, etc., etc.

Cast—KRU, CHANTUI, NAH, LADAH, and BIMBO (the monkey)

Something entirely new in motion pictures.

COMEDY—"HOLY MACKEREL"  
PATHE REVIEW

Admission . . . . . 50c and 25c

## To Every Woman

who is eager for new ideas in home decoration—new color combinations for the sun porch, new color schemes for baby's room, new color beauty everywhere in the house—"61" Brushing Lacquer comes as a household blessing.

**Kaizen Hardware Co.**  
Telephone 3

## UNION STEAMSHIPS LIMITED

Sailings from Prince Rupert.  
For VANCOUVER, VICTORIA, Butedale, Alert Bay, etc., Tuesday, 5 p.m.  
For VANCOUVER, VICTORIA, Swanson Bay, Alert Bay, etc., Saturday, 9 a.m.  
For PORT SIMPSON, NAAS RIVER POINTS, ALICE ARM, ANYON, STEWART, Wales Island, Sunday, 8 p.m.  
123 2nd Avenue.  
R. M. SMITH, Agent.  
Through tickets sold to Victoria and Seattle, and baggage checked through to destination.