

LATEST LADIES' FOOTWEAR HAS WOODEN SOLES



The latest French bootery being introduced in New York for afternoon and evening wear has decorative, modernistic, wooden sole.

# Victor

Orthophonic **Records**

**Lover, Come Back To Me!**

(from "The New Moon")  
Fox Trot Victor Arden-Phil Ohman and Their Orchestra 21776

**Carolina Moon**

Vocal Gene Austin 21833  
Waltz The Troubadours 21847



Gene Austin

**I Faw Down an' Go Boom!**

Fox Trot Geo. Olsen and His Music 21832

**Makin' Whoopee!**

Comedian Eddie Cantor 21831  
Fox Trot Geo. Olsen and His Music 21816

**Where the Shy Little Violets Grow**

Fox Trot George Olsen and His Music 21819  
Vocal Johnny Marvin 21820  
Piano Solo Willie Eckstein 216539



Johnny Marvin

**Sweethearts on Parade**

Vocal Johnny Marvin 21820  
Fox Trot Jean Goldkette's Orchestra 21800

All the latest Red Seal records by famous Victor Artists



Victor Talking Machine Co.

of Canada, Limited

ORTHOPHONIC VICTROLAS AND RECORDS **McRae Bros.** VICTOR RADIO RECEIVERS

## SIMONDS SAWS

The most economical saws to use  
Simonds Canada Saw Co. Limited, St. Remi St. and Acorn Ave. Vancouver, B.C. MONTREAL St. John, N.B.

## News of the Mines

**AROUND PRINCE RUPERT**  
**Marmot Gold Breaks Into Big Vein, So Does Independence, Omineca District to Be One of Most Important**

Miners on the Marmot Gold property at Stewart have broken into a six-foot vein, evidences of which had been shown in No. 1 tunnel for the last 10 or 15 feet. The ore is a heavy sulphide with quartz and looks as though it would carry gold values, though there has been no time yet to get assays. There is heavy mineralization and no oxidation. The tunnel will be continued until opposite wall has been reached, when drifts will be run each way on the vein. Twenty tons of supplies arrived at Stewart last week, including a quantity of oil, and this was immediately sent up to the property. Machine work will shortly be resumed on the mine, operations having been carried out by hand since early winter. The tunnel in which the strike was made give a depth on the vein of more than 300 feet and the vein was struck at 432 feet from the portal. Surrounding the vein is several feet of well mineralized porphyry. No. 3 tunnel will be started up again as soon as the machines are running. It has about 60 feet to go to reach its objective which is a vein parallel to that which has just been struck in the other tunnel.

The crew at the Independence mine has just broken into the big vein in a cross cut from the long tunnel upon which they have been working all winter. The vein, where encountered, has an inch or two of talc on the footwall and stands at an angle of 87 degrees. The cross cut will be continued until the hanging wall is reached and then a drift will be run to get under the shoot of native silver that was encountered in the tunnel. The men are now working at a vertical depth below the surface of 650 feet. Ore is heavily mineralized, principally with iron sulphides, but no assays as yet have been made of it.

Samples of Topley Richfield ore found at the 200-foot level, have been placed on exhibition at the B. C. Chamber of Mines in Vancouver, where they are attracting considerable interest. The assays give \$18 in gold, \$17 in silver, 2.8 per cent lead and 2.2 per cent zinc. Assay of the diamond drill core ran \$18 in gold and 114-ounces silver.

E. A. Haggren, M.E., editor of the Mining and Industrial Record, had a lengthy review of Omineca mining division in the last Vancouver Sunday Province. He declares that this huge interior area, with its many varieties of ore, is heading for a foremost place in the mining industry of the province. Lack of roads are a big drawback, though waterways, both to the north and south of the artery provided by the Canadian National Railway, might be used to better advantage. Mr. Haggren describes the various portions of the vast district and gives a brief history of mining activity in the area since 1860. "The placer miner blazed the trail for the prospector in search of lode deposits, but it was not until 1904 that serious attention was given to the possibilities of the Omineca mining district in this respect, curiously enough, a Nelson syndicate later organized as the Telkwa Mines, Ltd., was among the first to undertake active development of a lode mine there. This mine is located at the headwaters of the Telkwa river, about 30 miles from its confluence with the Bulkley river. The courage of the men behind the venture is attested by the fact that when they started development they packed their supplies 300 miles from Quesnel or from Hazelton on the Skeena river, a distance of 165 miles. The property in which the company is still interested is known as the Telkwa Mines and consists of eight claims carrying five mineral veins. The main vein is 20 feet wide and is traceable for over a mile and a quarter in length and for a vertical elevation of 2700 feet on the slope of the mountain. The ore carries values of 40¢ in gold, 4.2 ounces silver and 3.4 per cent copper. Great changes have taken place since the Nelson syndicate first entered the field. Railway transportation has been provided through the Bulkley Valley and mining development is active from New Hazelton along both sides of the railway as far as Mica Mountain." Mr. Haggren, in his article, speaks favorably of various properties in the U.S., Cedarvale and New Hazelton

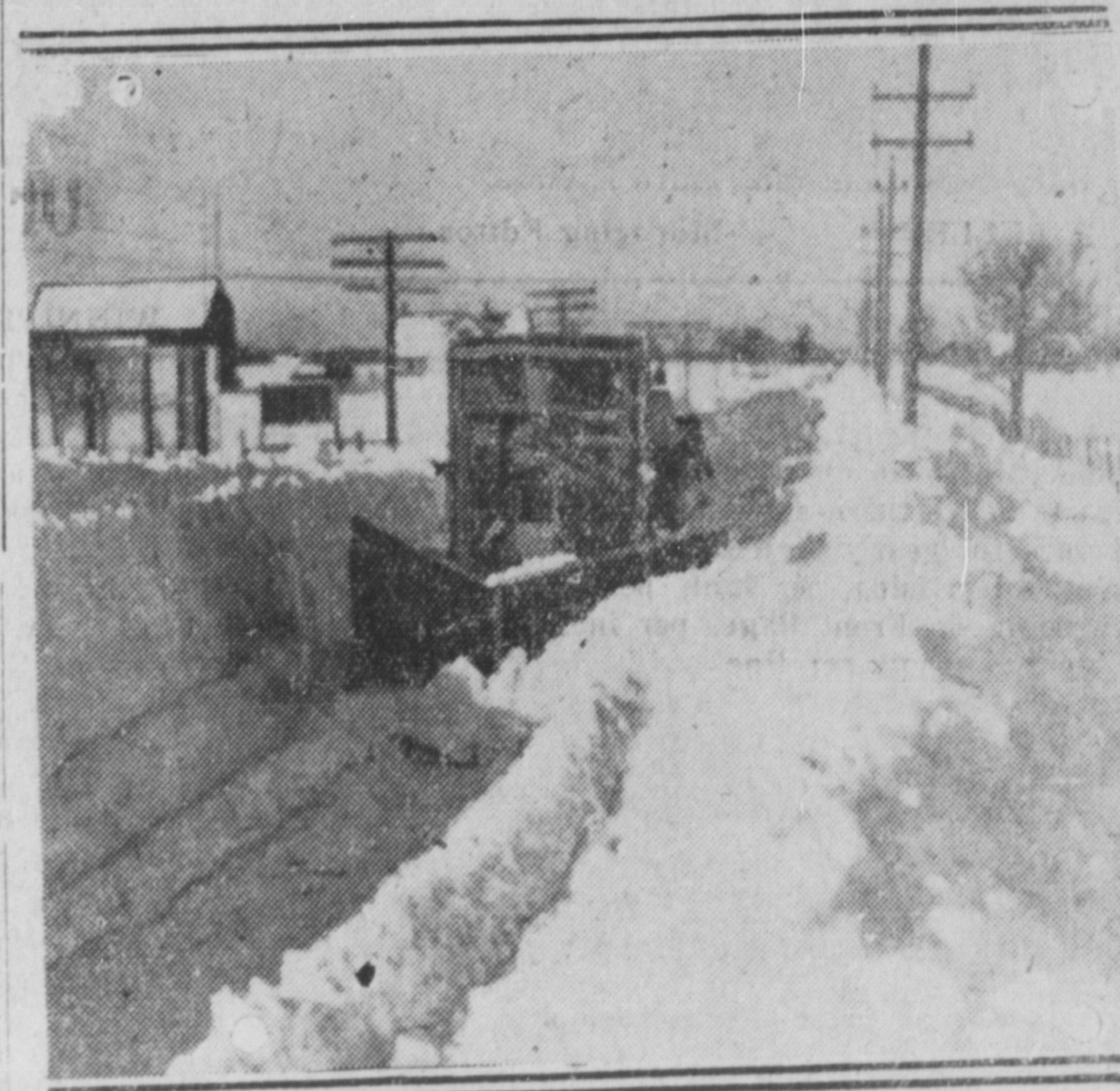
veins. As soon as sufficient ore reserves have been established, it is proposed to instal a 100-ton mill. The property has the earmarks of being one of the best and most profitable mines in the north. Conditions are favorable for ore transportation to the railway and the mine has the advantage of location in a rich agricultural district. "The outlook for the Omineca mining division has never been so bright as it is today and few districts are giving such encouraging results in proportion to the development carried on," concludes the article.

## STRONG RALLY IN HOME OIL

VANCOUVER, March 8. — A strong rally in Home Oil imparted strength to various associated issues yesterday. At the close the general oil list was much stronger, gains ranging from 15 cents to \$2.50. Home closed at \$18.50, \$2.50 higher.

Try a Daily News WANT-AD.

## BIT HEAVY UNDER FOOT



Scene on state trunk highway No. 47, near Appleton, Wis., as a snowplow succeeded in opening route which had been laden with six feet of snow.

SPRING

SPRING



# Spring OPENING WEEK

A gala opening—a style show presenting in perfect appointments the fashion hits for springtime wear as sponsored by Paris courtieres. An exhibit of what the smart women will wear in Frocks, Coats and Ensembles. Modes brilliant in styling—unusually new in materials and gay and sophisticated in hues.

PRICES FROM \$12.75 TO \$35.00

YOUR INSPECTION INVITED



SMART SHOES

They too add more charm and beauty to the spring ensemble. Pumps, one-straps, sporty oxfords in varied leathers, colors and trimmings. Priced moderately at

**\$8.50 AND \$10.00**  
TWO PRICES ONLY



MODISH HATS

Rankish little models fashioned of soft, glossy felts and silks and trimmed in the smartest of ways. Trimmings so new and oh, so entirely different!

**\$4.95**

Annette

Ladies' Ready-to-Wear

613 THIRD AVENUE (OVER P. BURNS' STORE)