

Just Arrived!!

## YOUTH'S DRAPE PANTS

All These Features:

- Wide Knee
- Narrow Cuff
- Tab Belt Loop
- Smooth Gab
- Self Match Belt

All sizes for Teen Ages and Youths. The colors are "in the groove" and the style is "extra keen." ... Hurry down and "get in the swim."



### BOYS' and YOUTHS' SPORT JACKETS

A complete stock for all size boys and youths. In the past the in-between size boys have been hard to fit. Not this year. We've gone all out to fit every age and size boy.

## Rupert Men's and Boys' Store

217 Sixth Street . . . Just Around the Corner

### VIEW-MASTER REELS

Reduced

50c each

WRATHALL'S  
Photo Finishing  
320 Third Ave. W.

### PORTRAITS

Films Developed and Printed  
PROMPT SERVICE

HANDLER'S STUDIO  
216 - 4th Street Box 645  
Phone Green 339 Prince Rupert

### BETTER USED CARS

### SAFE BUYS

- 1950 Monarch Sport Sedan
- 1950 Ford Custom Ford
- 1950 Chevrolet Sedan

All Condition—Immaculate throughout

### TRUCK SPECIAL

- 1950 Ford 1/2-ton Pick-up

### Bob Parker Ltd.

FORD - MONARCH DEALERS  
Prince Rupert, B.C.

Moving, Packing, Crating  
Shipping and General  
Cartage and Storage

Complete, Reliable and Efficient  
Service. Also agents for  
Canadian Liquid Air Co. Ltd.  
for Oxygen, Acetylene and all  
welding supplies.

### LINDSAY'S CARTAGE & STORAGE LIMITED

Cor. 2nd and Park Avenues  
Est. 1910 Phones 60 and 68



"Hospitality and  
Good Food"

That is Our First Aim  
Phone 17 for Orders  
To Take Out

### Commodore Cafe

## B.C. Totem in Video Show

NEW YORK—A hand carved Thunderbird totem pole, made by Ellen Neel of Vancouver and which has been on display in various parts of the United States for the past two months, will be presented to Robert Q. Lewis, celebrated radio and television star, during a show tonight. The Canadian National Railways is putting on the show, acting in behalf of the Vancouver Tourist Association.

Lew, who is one of the outstanding television stars in the United States, is an enthusiastic collector of totem poles and his collection now numbers more than two dozen small models. Put the totem pole fashioned by Mrs. Neel's hands in two weeks of work will be Robert Q.'s "most choice possession." When Lew had a preview of the Vancouver Tourist Association's present he enthusiastically exclaimed "this is simply grand and out of this world and I will prize it most highly."

The presentation will be made as the opening sequence of Lewis' TV Show over the video network of the Columbia Broadcasting System.

Lewis, who is no repeat, no

## Modern Etiquette

By Roberta Lee

Q. What is the correct way of introducing a man to a woman?

A. The man is invariably presented to the woman. The only exceptions are when a woman is introduced to the Governor General, to a cardinal, or to a reigning sovereign.

Q. Whom does the bridegroom name as the best man?

A. The brother of the groom, the brother of the bride, or the groom's best friend.

Q. How long should a hostess wait for a guest who is late for dinner?

A. Not more than fifteen minutes.

boisterous extrovert but a soft-spoken, studious young man who wears heavy shelled glasses and talks like a college professor who has made a clinical study of laughter, says that if he and Arthur Godfrey, another CBS TV star, can make a "deal" so Godfrey will sub for Lewis in exchange for Lewis subbing for Godfrey, "I'm going to Vancouver on my summer vacation and see what Mrs. Neel and the Vancouver Tourist Association can do in the way of adding to my totem pole collection."

## Gardening....

### SPADE YOUR OWN GARDEN THE MUSCLE-SAVING WAY

If you want your garden plot to be well prepared, spade it yourself. Weeks may slip by waiting for a man to do a job which, by the proper approach, can be reduced to enjoyable and beneficial exercise.

The secret is to take it easy. Spading is not hard work if done a little at a time. A space 30x50 feet can be spaded in a leisurely way in eight hours. One hour a day for eight days, and the job is done.

But first, be sure the soil is in condition to spade. Never work soil which is too wet; and if the soil is heavy, don't wait until it has become too dry. There is a point between extremes when even heavy clay can easily be lifted, and will crumble under a blow from the spade. You can tell this point by using the "mad pie" test.

Mould a ball of earth in your hand, and pat it to make a mud pie. If the pie holds together, the soil is too wet to spade. If it crumbles, then you can go ahead.

Systematic spading makes the job easier, and more complete. Here is one way to do it: Set a definite task for your first day's work, say a strip six feet wide,

running the shortest dimension of the garden. At one end dig a ditch, say one foot wide and the depth of the spade, removing all soil from it. Pile this soil near the opposite end of the strip.

Now begin to spade with the blade not parallel to the trench, but at right angles to it. This enables you to lift the soil more easily, and deposit it in the trench. The spade should be driven down, not on a slant, but perpendicularly to its full depth. Take a small slice of the soil so your back is not strained. Lift it up, turn the spade over, so that the top soil falls underneath and bottom soil on top. In filling the first trench, you have opened a second.

If you wish to spade under manure, spread it evenly over the area, except for the top of your initial trench. When this first trench has been dug, clean the manure from the top of the next trench and throw it into the bottom of the first; then proceed with your spading, piling the soil on top of the manure.

When you have finished your day's quota, you will have an empty trench, which should be filled with the soil you removed from the initial trench.

## MUSIC, DRAMA FESTIVAL—

### Entries So Numerous Two Competitions Could Be Held

With more entries than it seems possible to handle in three days plans for this year's Prince Rupert and District Music and Drama Festival May 2, 3 and 4 were discussed at a meeting in the Civic Centre last night.

"We have enough entries for two festivals—one of music and one of drama," said R. G. Moore, program chairman, who reported a total of 171 entries over last year's 108. Entries closed officially March 15, after an extension of two weeks.

Mr. Moore said that adjudication would have to be held morning, afternoon and night, with entries probably being run off in the Civic Centre and Capitol Theatre simultaneously.

**OFFICIAL OPENING**  
The executive decided that the official opening should be conducted by Inspector of Schools G. Graham on the first evening of the festival with introductions for each opening session.

Since a special meeting will be held April 2 to draft the final program, the executive hopes to have all names and information in from contestants by that time. All groups will be sent a program with a summary being printed for public advertisement, it was decided.

Appointed to assist Mrs. W. S. Kergin, reception chairman, was Mrs. L. P. Charbonneau, who acted as secretary in Miss Yvonne Larson's absence.

With refreshments donated, a reception will be held after the festival. A directors and executive meeting with the adjudicators will also be held.

Plans for billeting under committee chairman, Mrs. C. P. Balagno, will be made for the school entrants.

With the transfer from the city of Armine Boas, a business manager and assistant are to be appointed to the executive, Mrs. E. W. Becker, president, said.

Definite understanding about extra copies of selections for the adjudicators was requested by Sister Mary Lawrence.

To avoid the extra cost of duplicate copies and royalties, it was suggested by Mr. Moore that a subsidy be given applicants in the future by the Festival committee to defray this added expense to those entering but no decision was reached.

It was pointed out by Henry Plum that the Western Music Co. will be providing the adjudicator's copies for all test pieces. But copies of individual selections would have to be provided by the applicant.

"This is necessary so the adjudicator can have a basis for adjudication," Mrs. Becker pointed out.

Those attending the meeting were: Mrs. L. P. Charbonneau, Mrs. E. W. Becker, Mrs. G. A. Hill, Rev. Basil S. Prockter, Miss Elizabeth Holmes, Rudolph Olsen, R. G. Moore, Mrs. A. E. Anfield, Mrs. W. S. Kergin, Henry Plum, Sister Mary Lawrence, Mrs. C. P. Balagno and Sister Superior.

### NUMEROUS ENTRIES

Entries consist of:  
Pianoforte, solo, 56 groups.  
Violin, 12 groups, with two from Ketchikan.

Elocution, 21 entries, from local schools.

Dancing, four local entries and Highland Fling dancing from New Hazelton.

Drama, 13 groups.  
Two plays from Both Memorial High School Sr. Drama Club.

Two plays from King Edward School.

Two plays from Both Memorial High School Jr. Drama Club.

One play from the New Hazelton Drama Club.

One play from the Terrace Civic Centre Drama Club.

Two plays from the Prince Rupert Little Theatre.

One play from the 3rd Company Girl Guides.

One play from the 1st Co. Girl Guides, Jr.

One play from the Business and Professional Women (Adult).

Instrumental Groups and Miscellaneous, 11 groups, including the Aiyansh Silver Harmonica Band, Nass River.

King Edward and Conrad Street school's pre-band instrumental groups, flutophones.

Individual entries for the pipe organ.

Ernest Morven, Aiyansh, coronet solo.  
Clarinet, viola, cello, viola cello entries from Ketchikan.

Fifty-eight groups of vocal solos and duets, four from New Hazelton, others from Terrace and district points, but mostly from the city.

Twenty-four groups in Junior Choral Classes from King Edward, Borden, Conrad, Booth-Memorial, Annunciation, New Hazelton and Rural elementary schools.

Entry from St. Andrews Jr. Choir.

Three groups in the adult choral classes.

Rotary Mixed chorus.

St. Peter's Church Choir from Aiyansh.

Ladies' trio of Nan Crawley, Yvonne Larson and Vera Roberts.

### CAUSTIC JURIST

LONDON (CP)—Said a judge in the Old Bailey: "The jury system is perhaps the most valuable protection left in this country for the freedom of the individual—or such freedom as is now left to us."

**KING SOLOMON'S MINES**  
The greatest adventure picture of them all  
3 YEARS IN THE MAKING!  
DEBORAH KERR  
STEWART GRANGER  
RICHARD CARSON  
Technicolor  
Capitol

## LIGHT UP at HOTEL FRASER HOUSE

### Looks for Big Salmon Season

Norman Nelson of the Nelson Brothers Fisheries Ltd., is making a northern tour of canneries and is conferring today with Harry Robins, local manager at Port Edward.

"An ordinary season is expected this year, with the canneries being as busy as usual," said Mr. Nelson, who arrived in the city yesterday on the Prince Rupert. Sockeye salmon will be brought from the Namu sector

VALUABLE ISLAND  
Nauru Island in the Pacific, though only eight square, is one of the chief producers of phosphorus.

BIG AREA  
The section of Labrador administered by Newfoundland is an area of about 110,000 miles.

to the local cannery. This is expected to start in the part of July, he said.

Good seining is reported from Sooke. After his stay here, Mr. Nelson will visit the Islands.

You can afford to say  
**S. Michael**  
KNITWEAR  
The Best of British

## smooth.....KEM-GLO

Its plastic-like surface is so beautiful—so scrubbable!

Wash it with ordinary soap and water as often as you like—you cannot mar lovely Kem-Glo's tough, scrubbable surface. Grease and stains wipe away with a damp cloth.

And you'll be delighted how smoothly and easily you can flow on Kem-Glo with brush or Roller-Koater. No brush marks, no "laps" or streaks. No mixing or musing; you just start painting.

### The Miracle Lustre Finish

...looks and washes like the baked enamel on your new refrigerator!

made by the makers of famous KEM-TONE

**KITCHEN** Boiling water will not harm Kem-Glo. It is resistant to grease, oils and fats.

**BATHROOM** Don't worry about steam, or spray from the hottest shower. Your bathroom is really protected by Kem-Glo's smooth, non-porous surface.

**WOODWORK** Kem-Glo's soft lustre finish makes your doors, trim and other woodwork look their best... stands up amazingly against chipping and scuffing.

11 BEAUTIFUL COLORS  
...including "Stay White"  
plus 5 trim and accent colors.



FOR A PERFECT COLLINS  
SAY  
**Corby's**  
LONDON DRY GIN  
DISTILLED IN CANADA

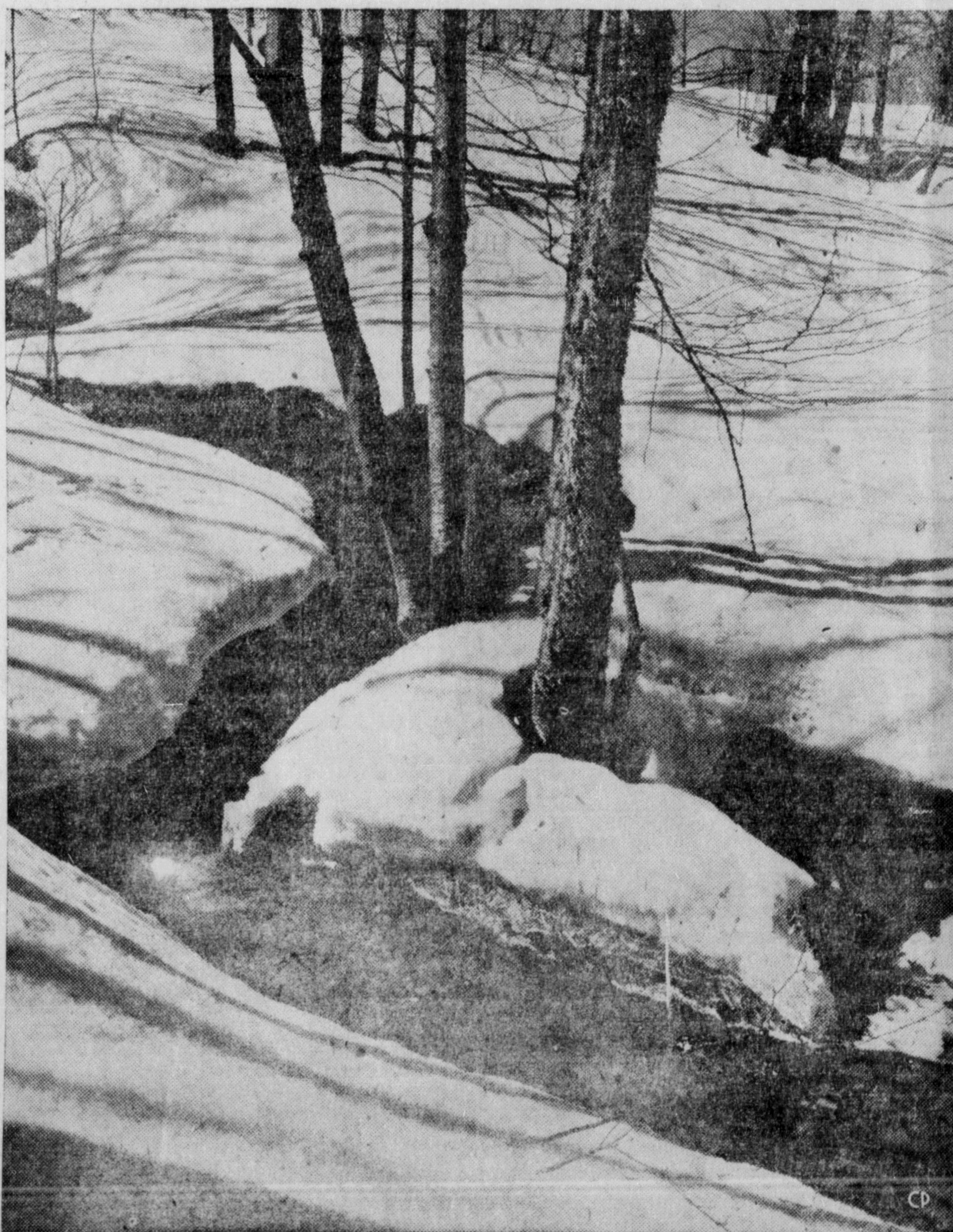
This advertisement is not published or displayed by the Liquor Control Board or by the Government of British Columbia.

KEM-GLO saves you money!  
KEM-GLO COSTS LESS TO USE!  
Unlike ordinary enamels, one coat of Kem-Glo does a perfect job over previously painted surfaces. Even on new wood or plaster, two coats are all you need—and you save the cost of primers and undercoaters, too!  
Only \$2.95 a quart

### BLONDIE

—Ladies Before Gents

—By CHIC



SPRING THAW—March 21 marked the beginning of Spring, and this photo by Malak of Ottawa catches the crisp cleanness of thawing snow in the Gatineau Hills north of Ottawa. The skiers have had their day and picnickers and nature-lovers will have their chance to admire these yellow birches and the tiny stream. (CP PHOTO)