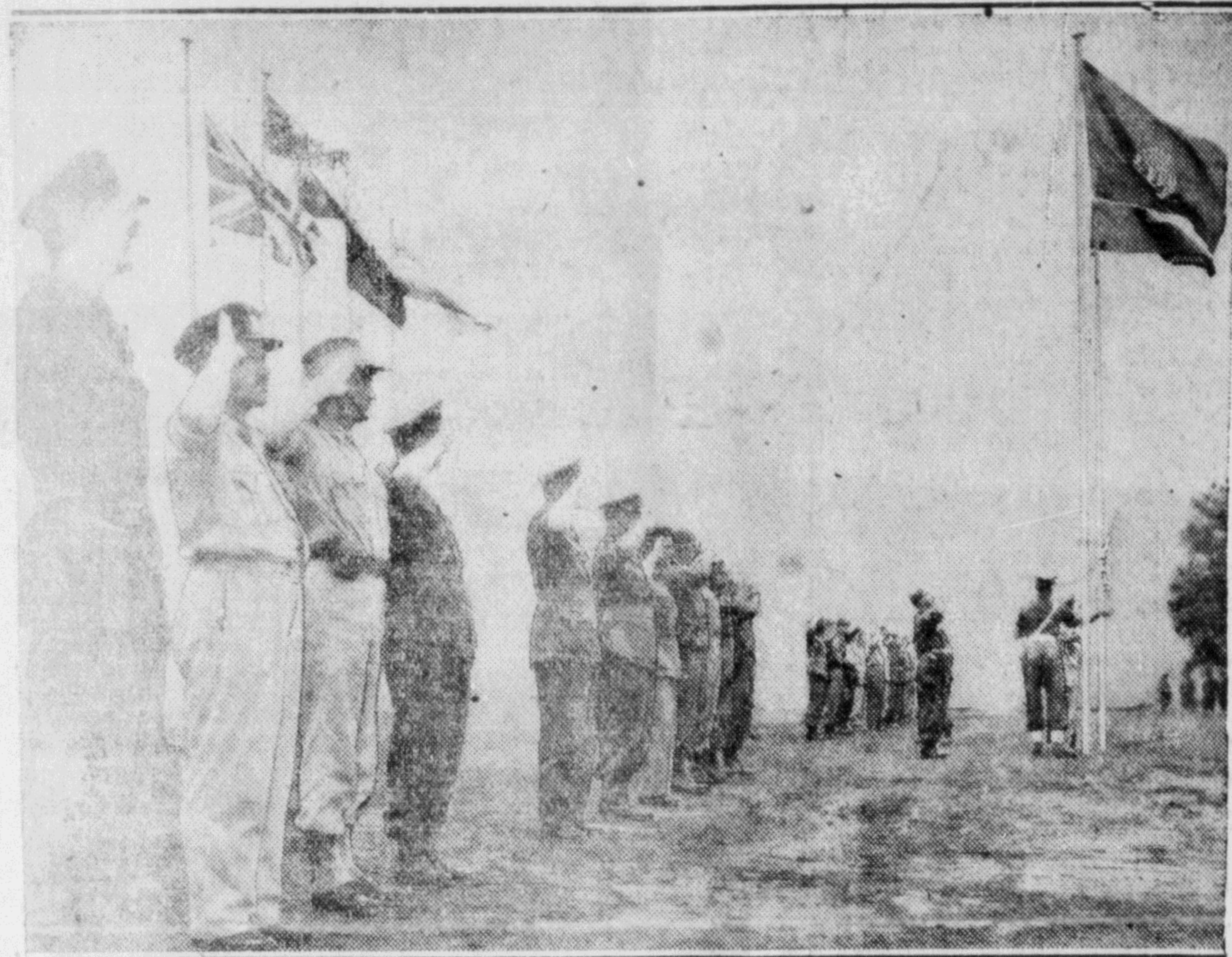


## Twenty Thousand Men Form Combined Korea Fighting Force



LANDS SPRING to the salute as the flag (right foreground) of the twenty-thousand strong, recently formed British Commonwealth Division is run up beside the United Nations' flag in Korea. Men from Britain, Canada, Australia, New Zealand and India make up the division, and representing the saluting group is the 8th Army's Lieut.-General James A. Van Fleet (centre of the line). Force was formed about a year after the first British fought in Korea. (U.S. Army Photo)

Prince Rupert Daily News  
Thursday, November 1, 1951

## Central Interior TRAVELS

Evangeline Vann's Diary

Kentia overwhelms at the... Clank of chains not heard for five years, and a creaking countryside in snow carried me back to beloved Cots-

Wales. As I Decker Lake. Menu chalked on blackboard reminded me of similar use in out-back hotels in West Australia, when numbers of empty rooms chalked for information of travellers arriving late by train. Thought serving small, sharp, with steak so appropriate.

## Prince George Says Census "Ridiculous"

Prince George is up in arms following a preliminary census figure which gives the interior city's population as 4664. Civic and Board of Trade officials call the figure "ridiculous" and the "most inefficient census on record." A recount is being suggested.

The 4664 figure compares with 2027 in the 1941 census, so the population of Prince George has at least more than doubled since last census.

The preliminary census figure for Vanderhoof is also out at 638, compared with 350 in 1941. Fort St. John up in the Peace River block, which was not incorporated in last census, is now given a population of 868.

Census figures for principal communities in the Yukon Territory have also been announced: Dawson 773, a decrease from 1043 in 1941; Whitehorse 2543, an increase from 754, and Mayo, 236.

## Marion Davies Marries Again

LAS VEGAS, Nevada — The former actress Marion Davies was married yesterday to Horace C. Brown, skipper of a military transport ship. She gave her age as 46. Brown is 45.

Miss Davies was the long time friend of William Randolph Hearst, who was owner of the home in which the publisher died last August.

Miss Davies and the Hearst Corporation announced that all matters between them are settled.

Classified Ads Pay

## Japan Looks For Exports

By THOMAS A. BOYNTON  
Need Money To Boost Trade—Hopeful for Tomorrow

NEW YORK (AP)—The Japanese leader in world trade says his countrymen "are filled with hope for tomorrow."

Tetsuzo Maeda, managing director of Daiichi Bussan Kaisha, Ltd., one of Tokyo's biggest import-export houses, outlined here a broad plan for Japan's possible future position in the society of nations.

Among other things, he said, Japan wants to sell whale oil to Germany, seafood and wire to Hong Kong, textiles and canned fish to the United States, metal products to Britain and all sorts of manufactured goods to the world.

To do it, Japan has an abundance of manpower waiting to work, Maeda said in an interview. But she needs four things first—open, two-way commerce, capital investments, raw ma-

terials and technical training. Given those four, Japan has one more big objective, Maeda said. That is to teach technicians in other heavily populated Far Eastern countries the lessons she learns herself. Then new industries of the East could help supply the West.

A goal would be to have Japan become part of a team of Asiatic nations making things other democratic countries want to buy, Maeda said. Also on that team would be the Philippines, Indonesia, Indo-China, Burma, Malaya, India, Pakistan and "maybe, later, China."

Maeda said his firm—largely staffed by former officers of the once-great Mitsui combine—is making a big contribution toward the speeding of Japanese recovery. Daiichi is making ready to do more now he said.

"Millions of dollars in new investments may result from a study now being made by Bache," he said. Bache & Company, a New York financial concern, owns one-fourth interest in Daiichi. The interests of Daiichi cover manufacturing, investment and shipping as well as world trade, Maeda said.

Harold Bache and Robert Hall, Bache executives, are visiting

Tokyo to survey possibilities for development of new industries. On their return to New York, they hope to attract Americans to invest "many millions of dollars in" building new Japanese plants," the Daiichi executive reported.

Meantime, Maeda is on a world tour to make contacts and find out what type of goods merchants of the non-communist countries of the West and East would like to buy from Japan—"particularly those products new short in supply."

He said he's going to Bonn to try to sell West Germany 27,000 tons of whale oil which Japanese whalers hope to get from two 1951 expeditions.

Maeda said he'll visit London to try to interest buyers in metal and machinery, other European countries for assorted products.

(Continued on page 6)

## Have you tried the NEW AYLMER VEGETABLE SOUP?



"Packed in B.C."

- More Vegetables
- Rich Beef Stock
- Really Delicious

Your Family Deserves AYLMER Quality!

# HOW TO SAVE

in ONE EASY LESSON

PRICES EFFECTIVE Fri. Nov. 2 To Thurs. Nov. 8

FRUIT COCKTAIL Hunt's, 28-oz. 49c  
RASPBERRY JAM with Apple, 48-oz. 69c

Glen Valley Bartlett Pears 15-oz. 23c

Brentwood Peas Size 5, 15-oz. 16c

Nabob Marmalade 48-oz. 69c

Peas and Carrots Royal City, 15-oz. 17c

TIDE Washing Miracle. Large Package 35c

Gorgeous Tudor Rose Georgian China  
Save your coupons for this lovely china

Swift's Premium Hams Half or Whole, Lb. 65c  
Bake or Boil — Delicious either way

Sliced Side Bacon, 1/2 lb. 39c

LEAN PLATE BOILING BEEF per lb. 65c  
TOMATO SAUSAGE, Fresh per lb. 55c  
BOILING FOWL per lb. 57c  
TENDERIZED STEAK per lb. 85c

Jewel Shortening Swift's, Lb. 35c

CHEESE Mild Cheddar, Lb. 63c

## - CHRISTMAS BAKING INGREDIENTS -

CRISCO, 1 lb. pkg. 43c	ALMONDS, Shelled, 1/2-lb. 49c
CRISCO, 3-lb. tin 1.49	WALNUTS, Shelled, 1/2-lb. 49c
Martin's Currants, 1 lb. cello 30c	CASHEWS, pkg. 35c
RAISINS, Seedless 30c	BAKING NUTS, pkg. 34c
Fruit Cake Fruit, 1 lb. pkg. 59c	PEANUTS, unsalted, pkg. 35c
CUT LEMON PEEL, 1/2-lb. 22c	COCONUT, Shredded, 1/2-lb. 35c
CUT ORANGE PEEL, 1/2-lb. 22c	CAKE FRUITLETS, pkg. 12c
CUT CITRON PEEL, 1/2-lb. 30c	PINEAPPLE RINGS 3 for 50c
CUT MIXED FRUITS, 1/2-lb. 28c	Mixed Glace Cherries, 1/2-lb. 49c

## Early Shopper Specials

Personal Shopping Only on following Specials:

AYLMER PORK & BEANS, 15-oz. tin	2 for 29c
TENDERLEAF TEA BAGS, 30's	Pkg. 39c
KEMP'S CARLTON CREAM BISCUITS	19c
ORMOND'S BISC-N-WHEAT, salted	17c
GOOD LUCK MARGARINE	Lb. 39c

### COFFEE SPECIAL

Roasted and packed

**lb. 92c**

BLAIN BROS.

### SWIFT'S PREM

Tin 53c

### Chocolate Bars

All Assortments

**6 for 35c**

### Macintosh's Toffee

GAIFTY Assortment A real treat

**55c lb.**

BAKER'S COCOA— 1/2-lb. tin 33c; 1 lb. tin 59c

Baker's Dot Chocolate, 1/2-lb. 49c

Baker's Premium Choc. 1/2-lb. 49c

Heinz Tomato Ketchup 29c

Quaker Oats, large pkt. 35c

Goblin Braised Steak— 16-oz. tin 51c

TOMATO SOUP— Campbell's 2 for 27c

LIBBY'S VIENNA SAUSAGE 4-oz. tin 29c

**Heinz Baby Cereals**

Barley, Cereal or atmeal, 8-oz. pkt. **21c**

**Heinz Baby Foods**

6 tins **55c**

CASE, assorted **2.13**

**PHONE 546 Free Delivery**

**BLAIN BROS.** **PHONE 547 2nd. Ave.**