

CONGRATULATIONS AND
BEST WISHES TO
Columbia Cellulose Co.

Mitchell & Currie Ltd.
BUILDERS and CONTRACTORS

Potential Hydro-Power

A source of potential water power of 1,803,000 horse-power lies within the Prince Rupert area, greatest of these being the Eutsuk-Kimsquit system and the Taitsa-Kemano river, a potential respectively of 910,000 and 845,000 horse-power. Other sources are smaller rivers with an average potential of 10,000 horse-power.

Present development of power serving Prince Rupert is 13,800 horsepower, of which 7,500 is hydro.

Production Speeds up

Prince Rupert's manufacturing industries in 1945 numbered 25, employing 1,294 men with a payroll of \$2,651,675 and a gross value of production of \$9,788,217.

Two years later the same number of industries operated with only half the employment, half the payroll and two-thirds of the production.

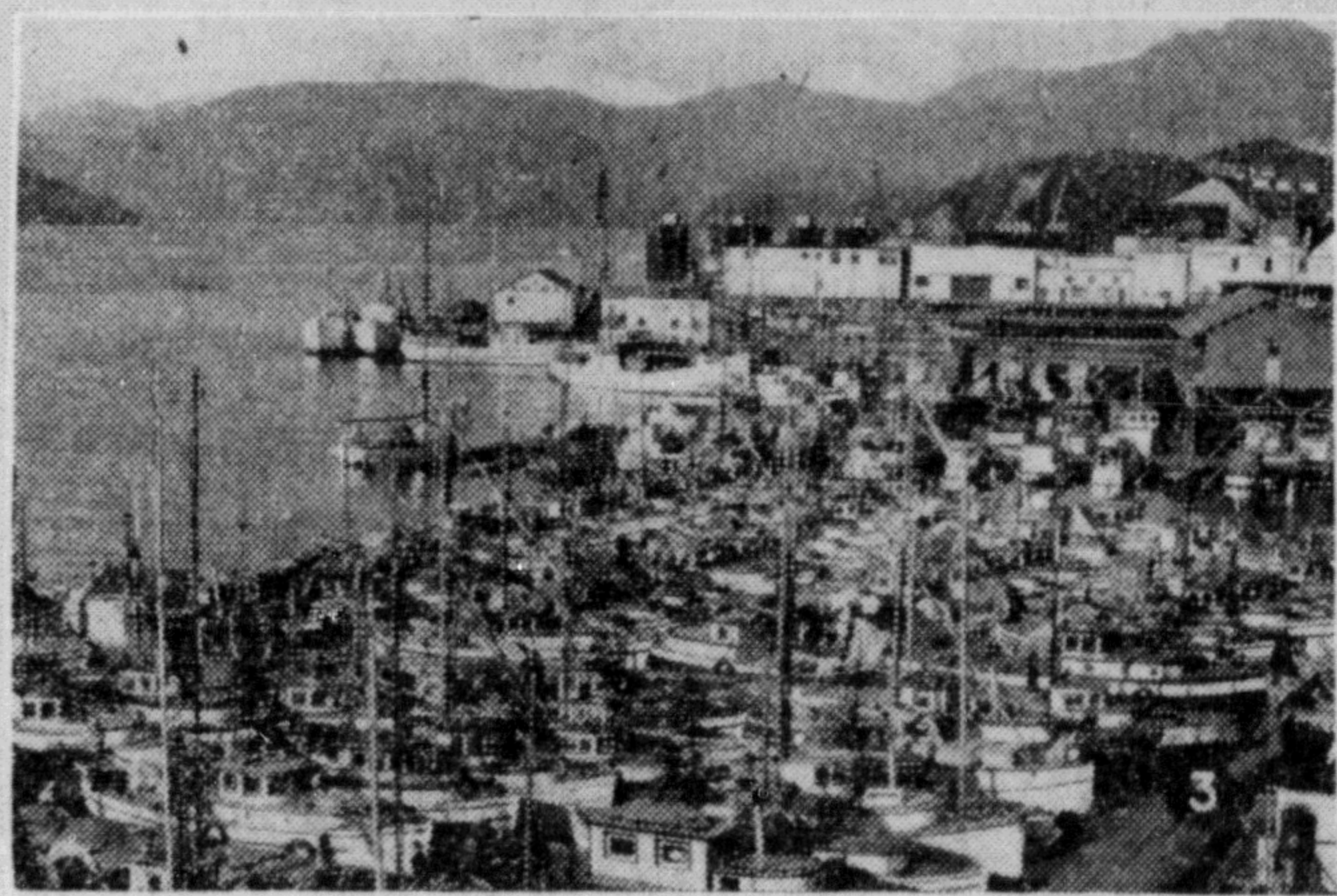
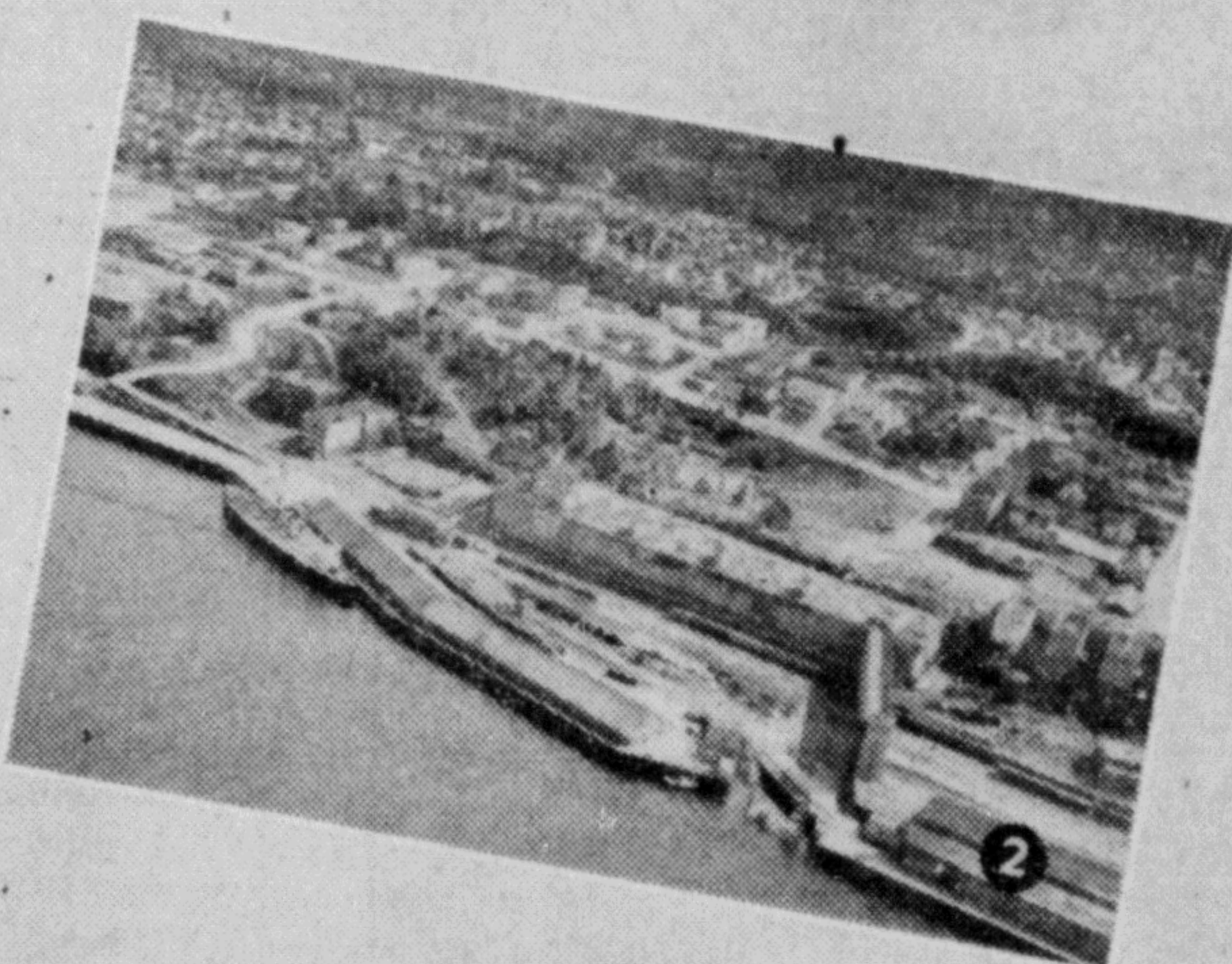
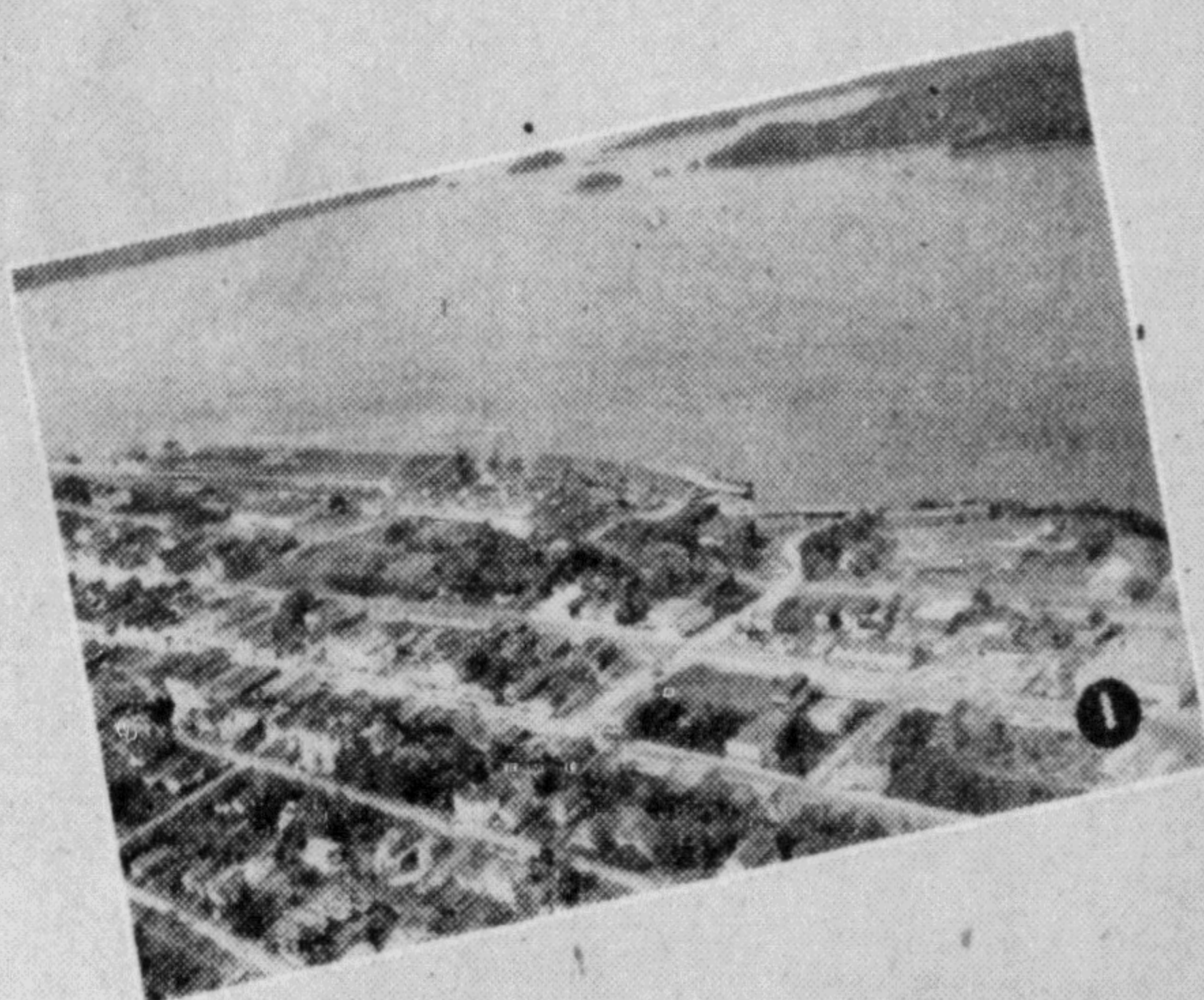
Today it is estimated there are 10 new industries, three times the number employed, five times the payroll, and at the end of the year, 10 times the production value.

BOOST INSURANCE
REGINA (CP) — The collegiate board has decided to increase to \$1,200,000 the amount of fire insurance carried on the city's high

school buildings. The amount previously carried was \$1,070,000.

The Federal Department of Fisheries is responsible for the conservation and management of all fisheries except shellfish (oysters, clams, abalone, etc.) and marine plants, all of which come within provincial jurisdiction. All

licensing of fishing effort—fishermen, fishing vessels, fishing gear—comes under this department, as do also all regulations and enforcement and inspection of canned salmon.



LARGEST ICE-FREE all-year port on the continent is Prince Rupert. Combined with the CNR transcontinental terminus and a trans-provincial highway it has most of the advantages of an all-strategic centre.



Electricity Everyone's Handyman

Electrical "Hands" make work light. They serve your home and business. They turn the wheels of industry. Wherever they are used they make possible new methods, new processes, Less toil, and greater efficiency.

to the
Columbia Cellulose Company

we wish every success on the opening of their vast modern development at Watson Island.



As this enterprise enters production and progresses, so may the citizens of Prince Rupert realize the opening of the long awaited era of greater opportunity and prosperity.

Prince Rupert

**NORTHERN BRITISH
COLUMBIA POWER
COMPANY LIMITED**

Stewart, B.C.

CONGRATULATIONS

to **Columbia Cellulose Company**



on their new plant
their management
their staff
in the mill and woods

See Our Home Designs Especially suited for Building in Prince Rupert — We have many modern plans from which to choose.

Albert & McCaffery LIMITED

CEMENT — SAND — GRAVEL — BRICK — TILE — GYPROC — LUMBER — PLYWOODS — MOULDINGS — DOORS — WINDOWS — PAINTS — ROOFING, ETC.

PHONES—116 - 117 and 58

PO BOX 160 PRINCE RUPERT, B.C.