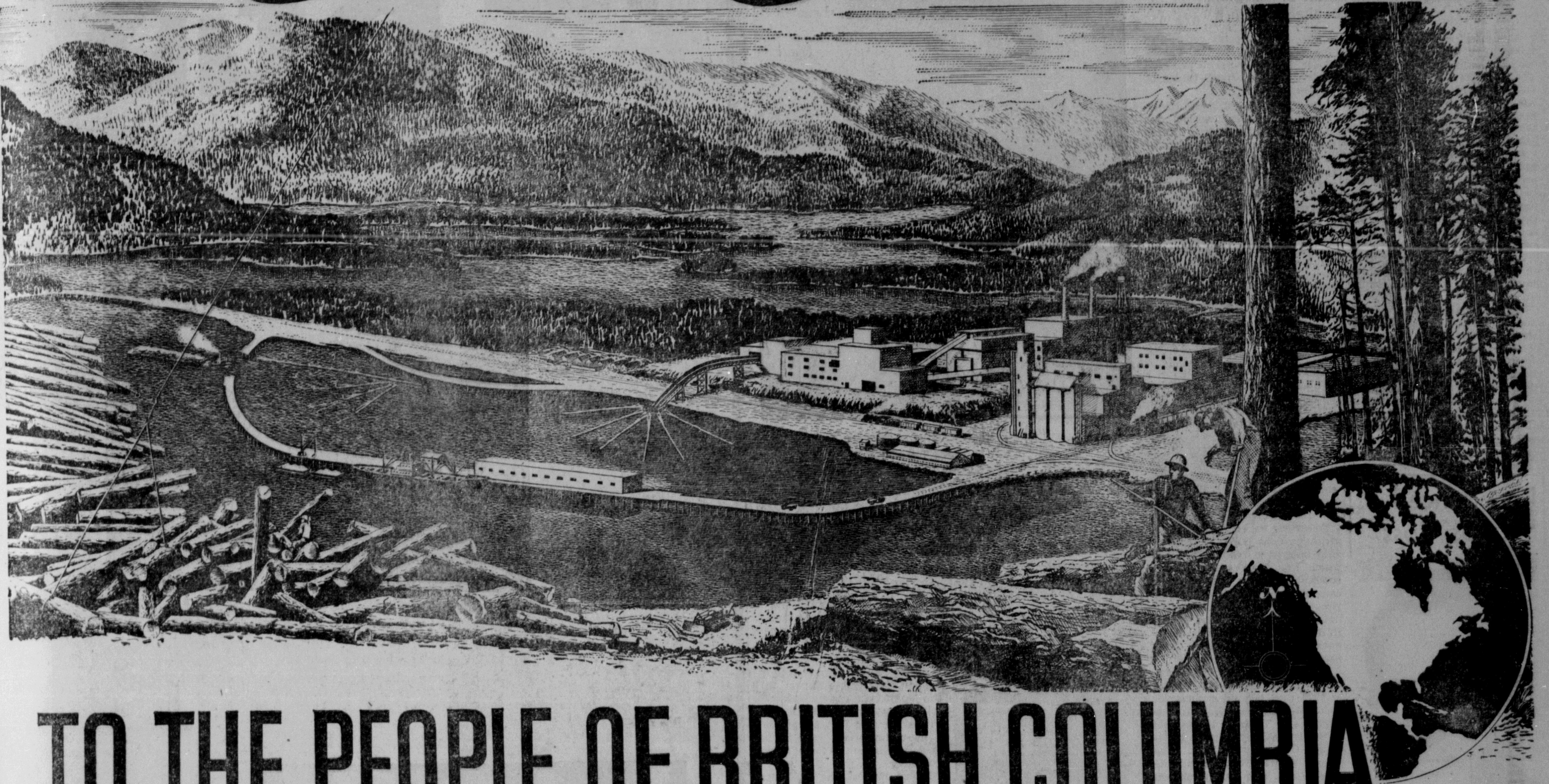
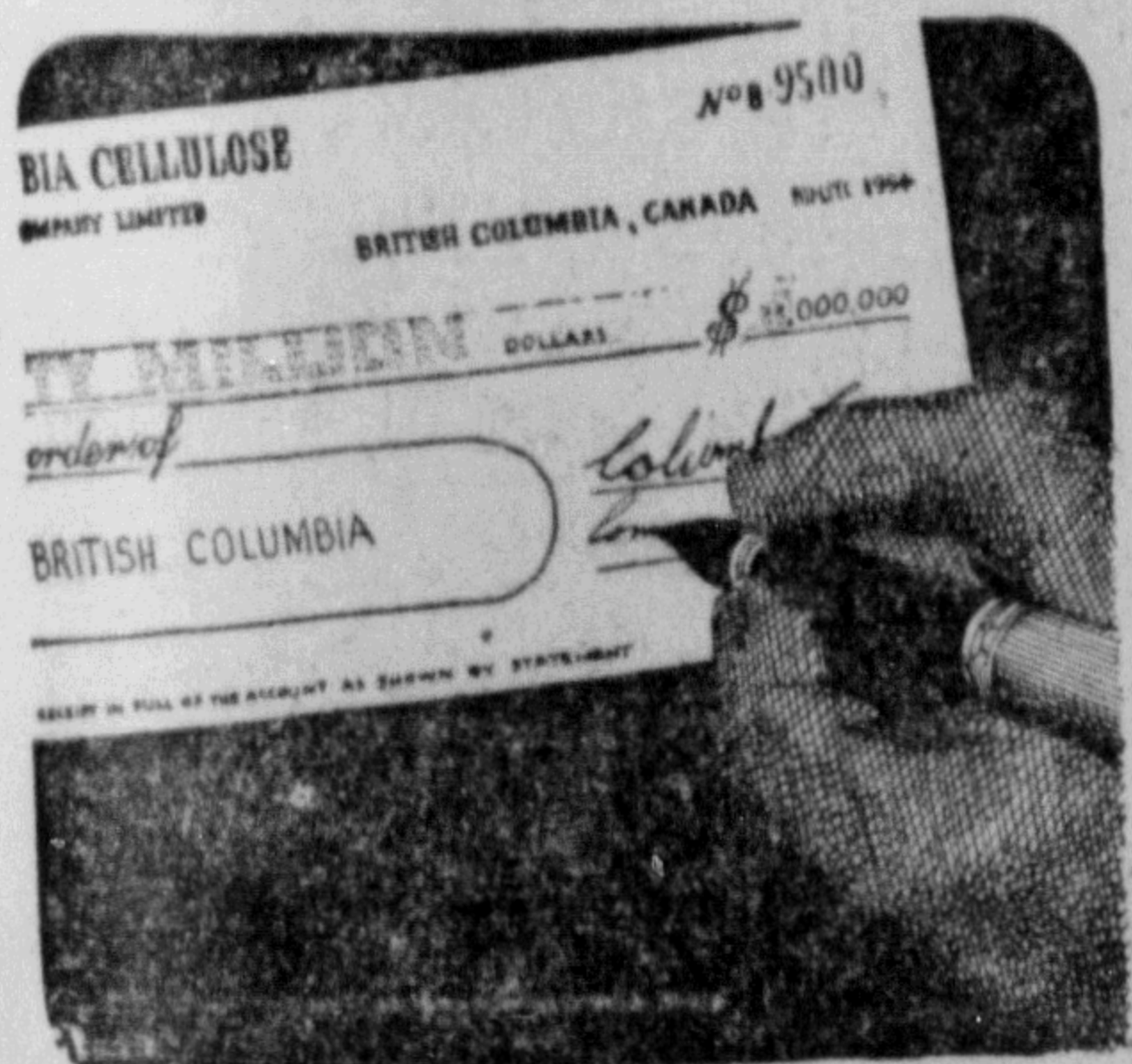


WHAT *Columbia Cellulose* MEANS

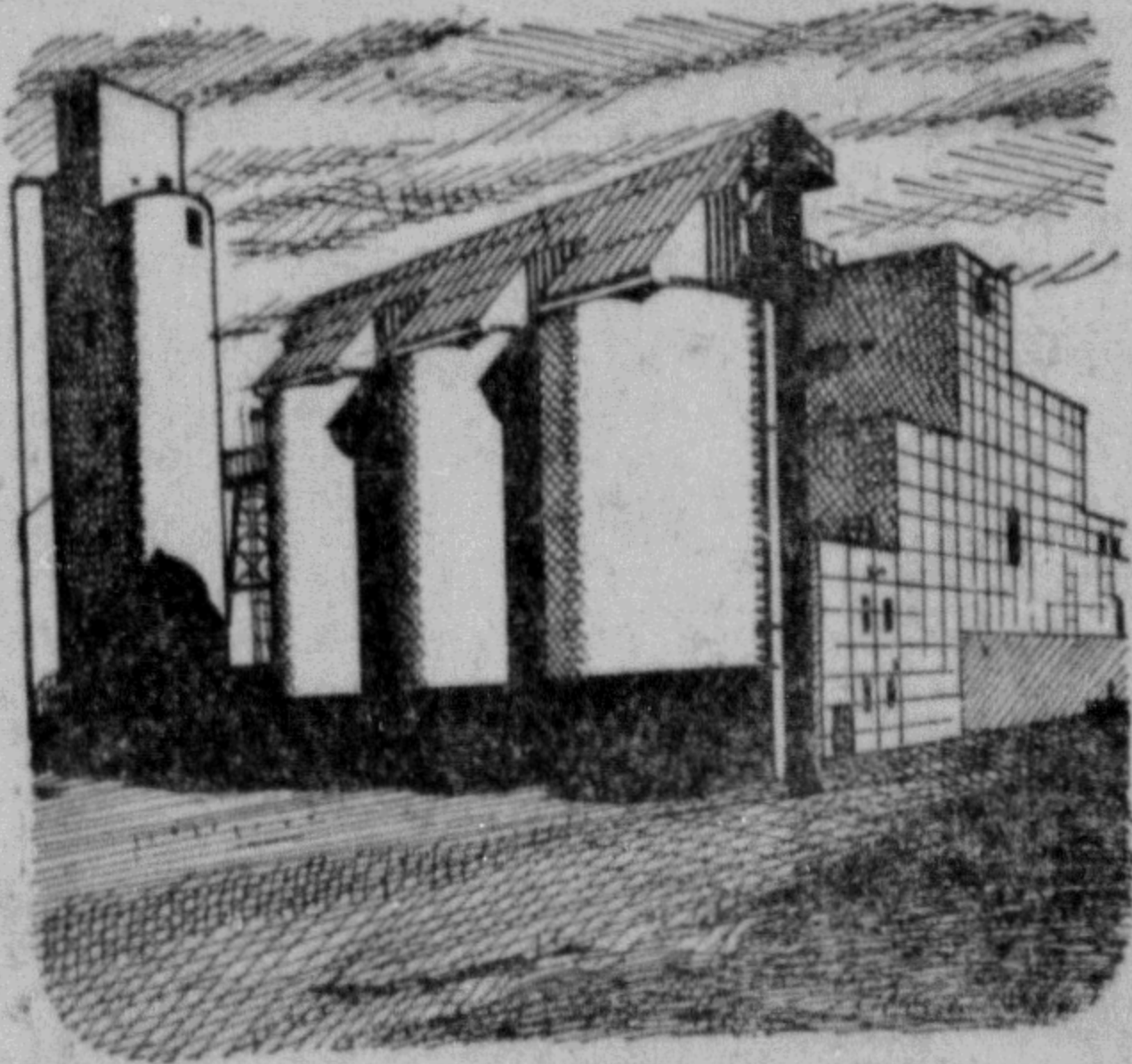


TO THE PEOPLE OF BRITISH COLUMBIA

It means millions of dollars spent on property, materials, construction and equipment in British Columbia... It means a new industrial development... It means more people employed on a permanent basis and the promise that more will be employed in the future... It means more payroll dollars buying more groceries, home-building materials, clothing and services; dollars circulating in the bloodstream of this Province's economy... It means British Columbia is taking a more important place in world trade and commerce through the intelligent use of British Columbia's basic resources.



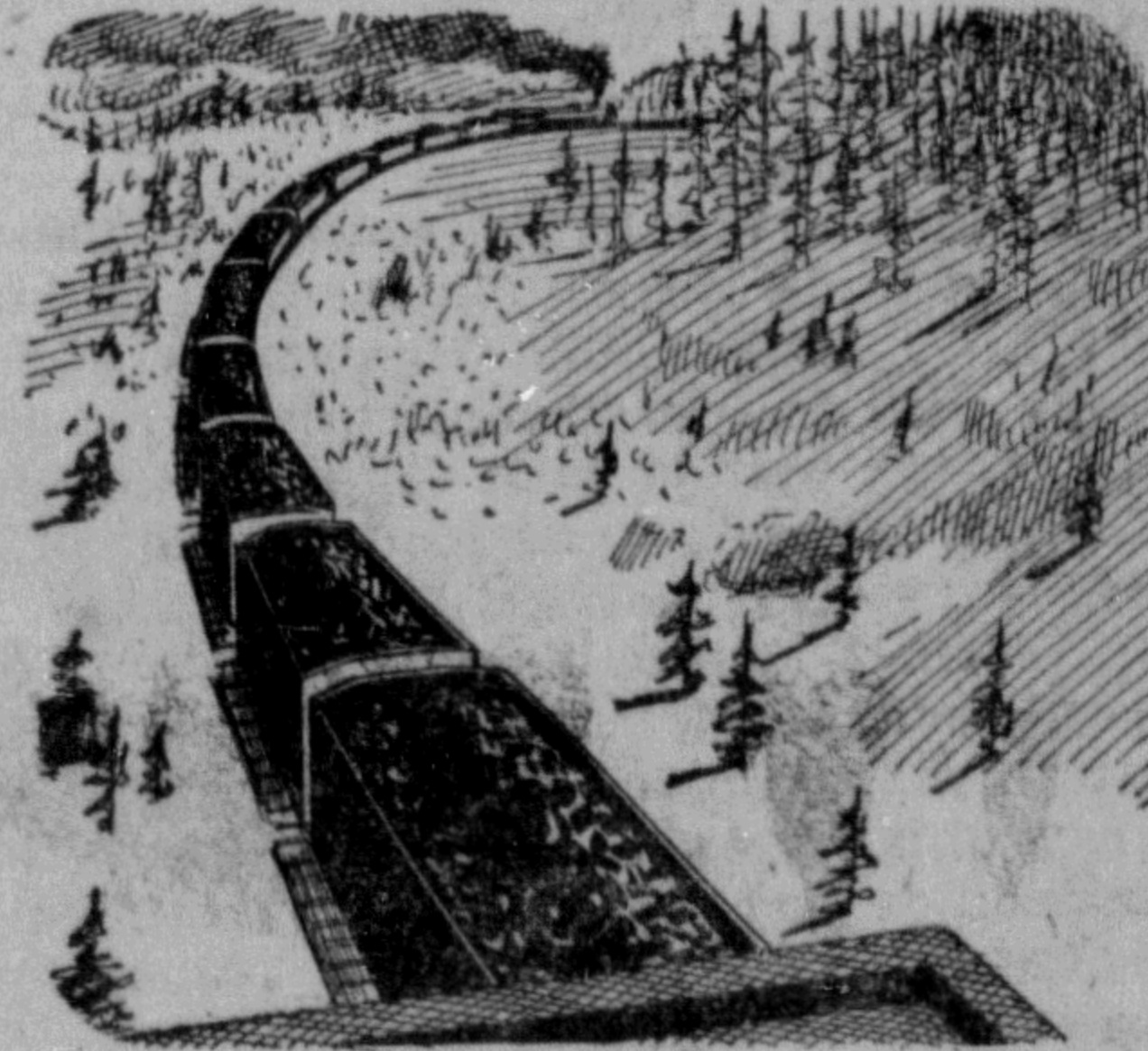
EXAMPLE: The plant represents a multi-million dollar investment on a site of 200 acres, nine miles from Prince Rupert. British Columbia labor was employed in its construction and British Columbia materials used where possible.



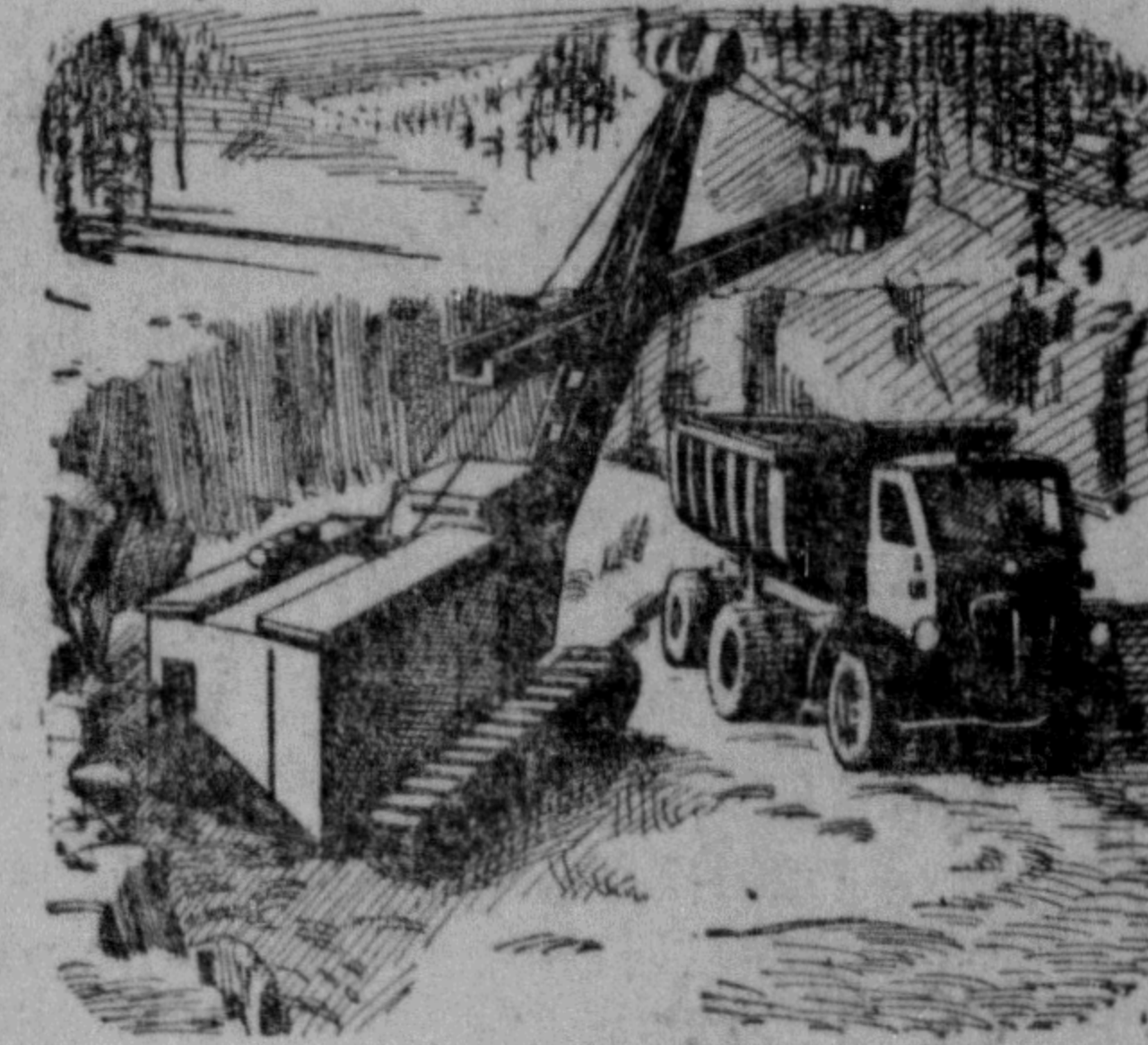
EXAMPLE: Construction of the first unit of the plant is now completed. It is the most modern of its type in the world. Capacity is 200 tons of high alpha cellulose daily for production of acetate yarn, plastics and other essential uses.



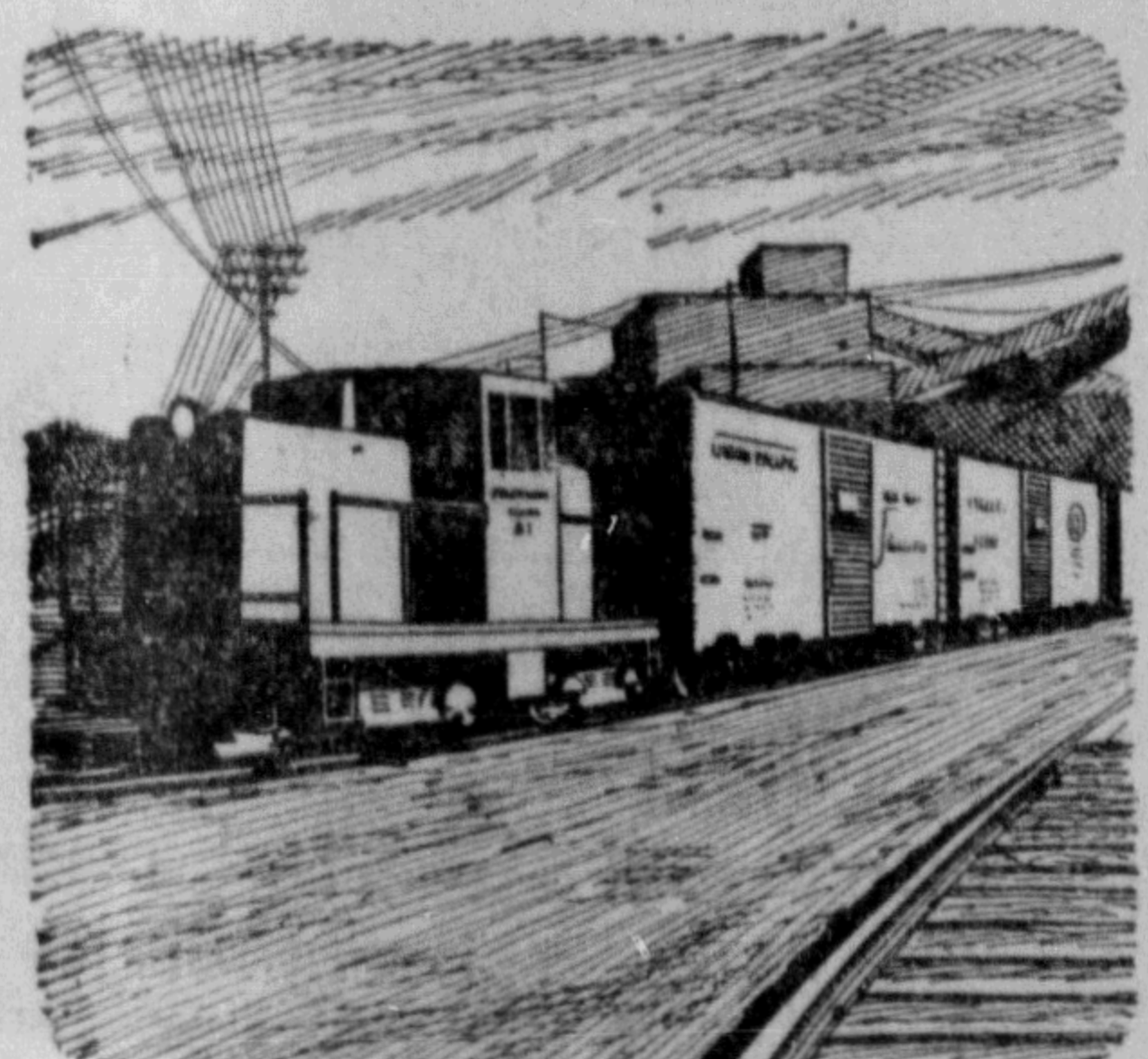
EXAMPLE: With a potential employment of over 750 men and women in the mill and woods operations, Columbia Cellulose is a new industry for the Province. It has helped to raise average family earnings in Prince Rupert to among the highest in Canada.



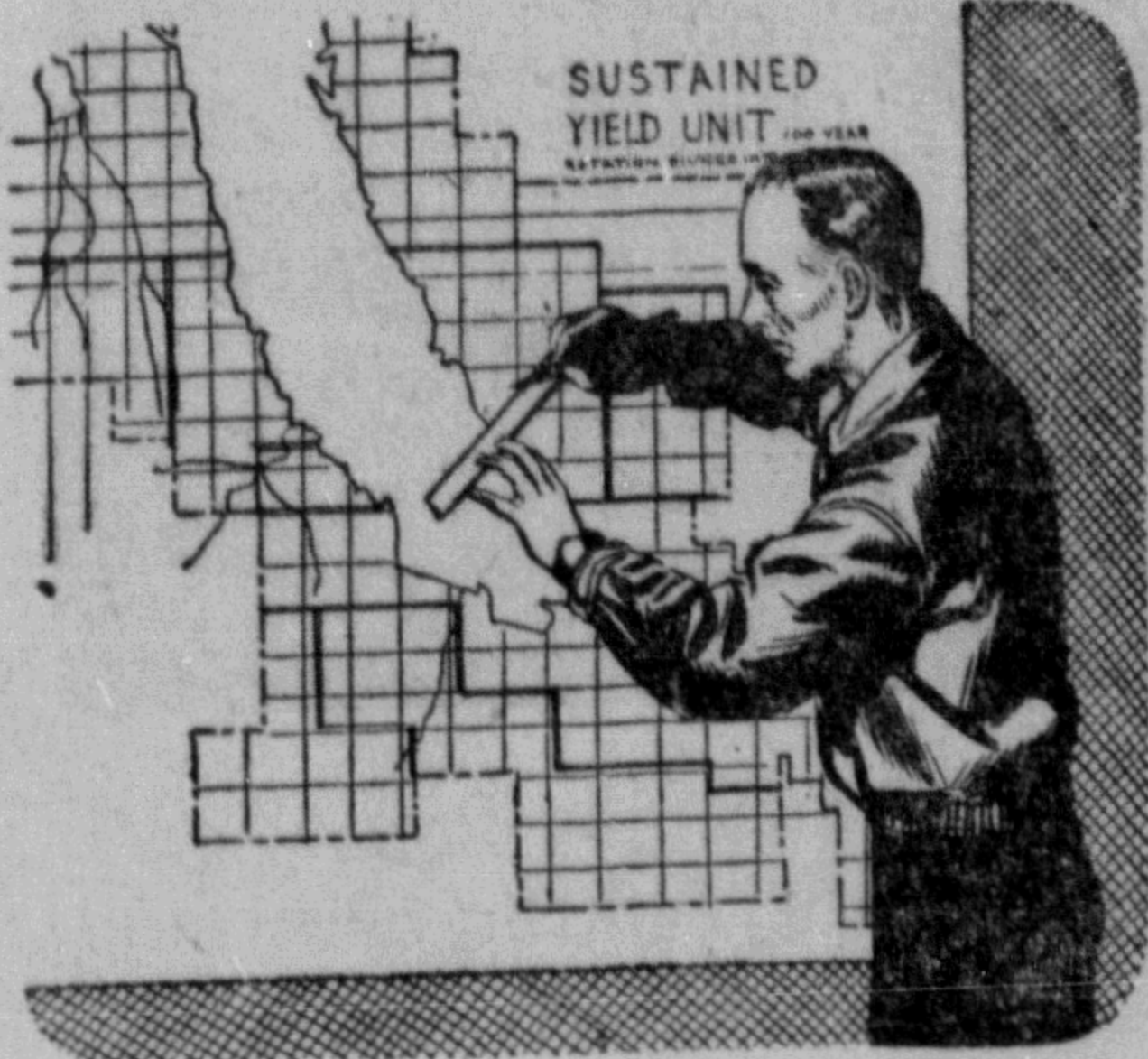
EXAMPLE: British Columbia coal is being used, providing secondary employment in its production. The plant will use over 100,000 tons a year, half of which will come from Telkwa, B.C., 230 miles east by rail.



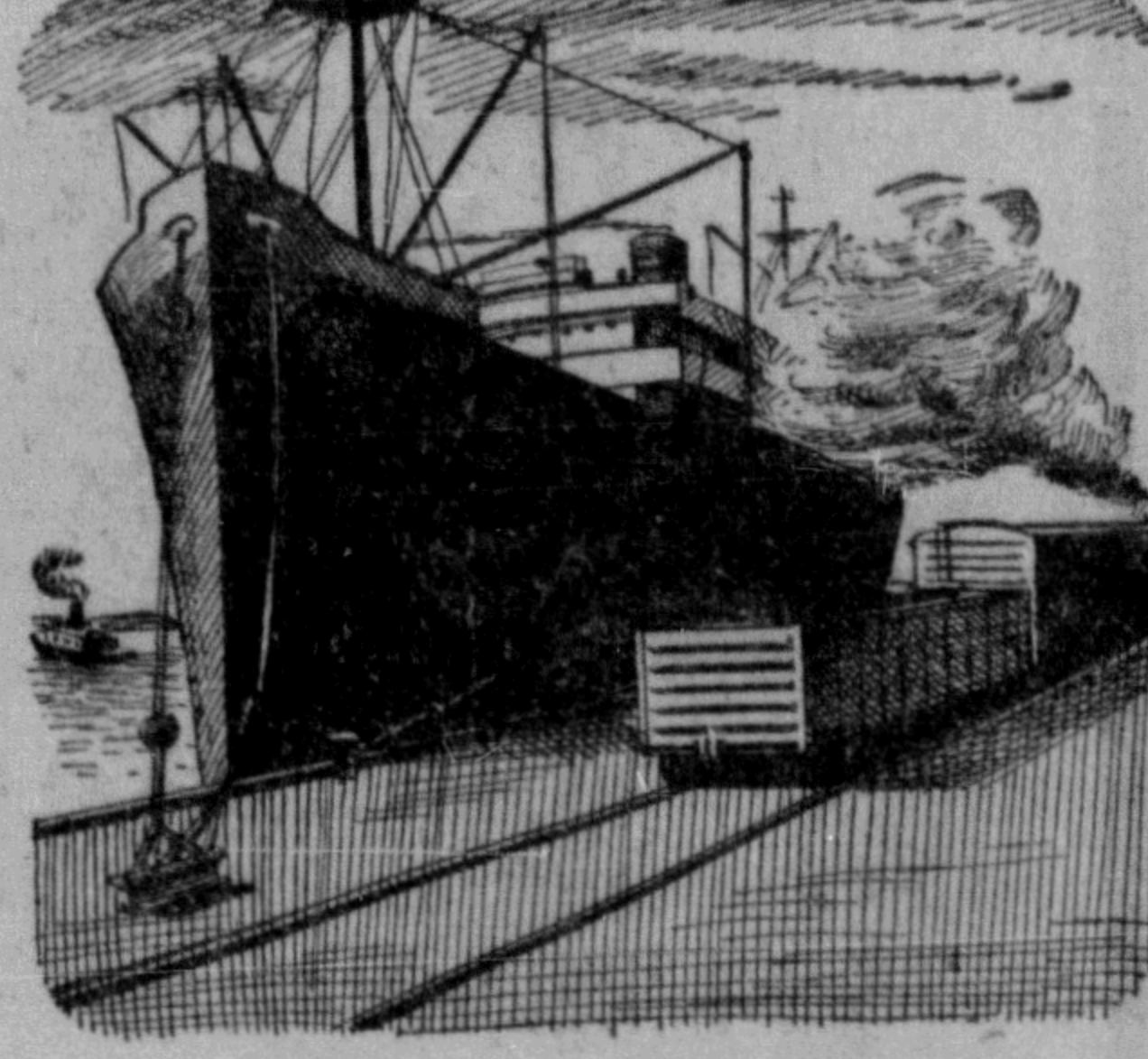
EXAMPLE: Deposits of limestone, used in production, are located five miles from the plant. Quarrying and processing of limestone represents further employment and payrolls.



EXAMPLE: Rail facilities, used to transport logs and coal to the plant from interior points, will play an immediate part in shipping rolls of bleached pulp eastward, a stimulant to payload traffic in British Columbia's northland.



EXAMPLE: With the first Forest Management License granted by the Provincial Government, Columbia Cellulose initiates a program of scientific logging assuring the regeneration of our forests, a protection of our heritage for generations to come.



EXAMPLE: Through its own deep-sea shipping wharf, the mill has ready access to all parts of coastal British Columbia and the world. Railway and highway connections at tide-water provide links with all parts of the continent, important in developing secondary industries.



EXAMPLE: Dam construction at Prudhomme Lake by British Columbia labor from British Columbia materials, supplies ample fresh water for present and future requirements. It is brought through a pipe line, with part of the way bored through solid rock.



EXAMPLE: Products from this new industry are of high strategic importance in both peacetime and defence production, a valuable contribution to the security of family life not only in British Columbia but of the entire freedom-loving world.

Columbia

CELLULOSE COMPANY, LIMITED

PRINCE RUPERT, B. C.