

SCIENTIFIC LOGGING BEING PIONEERED

Columbia Cellulose First Large Long Term Program

With the first Forest Management Licence ever issued in this Province, Columbia Cellulose Company Ltd., is pioneering the first large long-range scientific logging program in the history of British Columbia.

The timberland assigned to the Company by the Government lies in a part of the Province which, until now, has been largely unexplored. Much of it has never before been penetrated by white men.

The principle behind the Columbia Cellulose forestry program is that cutting must balance regrowth. The Company is practising "patch logging" in which trees are cut in blocks, leaving surrounding blocks standing to provide natural reseeded and re-forestation. Next year's cutting budget will be 20,000,000 cubic feet.

Until now, "perpetual logging" has been comparatively rare in North America—it was first practiced in the 1930's in the North-western United States. In European countries where conservation has reached a high level, the law requires at least one accredited government forester for every thousand acres of timberland. In British Columbia, with its 75,000,000 acres of forest, it would be impossible for the Government to find or support a proportionate force.

The Forest Act Amendment Act of 1947 was designed to attract private industry into doing the job which the government could not do. An unusually forward looking piece of legislation, it provided for the Forest Management Licence. With this licence, Columbia Cellulose has been assigned forest lands sufficient to supply the needs of its Prince Rupert plant, while, for its part, it assumes the obligation for protecting and harvesting the forests.

Columbia Cellulose engineers are now building a road north of Terrace, just west of the Kitsumgallum River and Lake. This road, expected to extend twenty-four miles within the next 18 months, will ultimately connect the Skeena and Naas

ivers, making it possible for Columbia Cellulose foresters to get to any blighted or wind damaged area quickly.

In addition to protecting existing stands, the Company is taking detailed inventory of these forests, scouting which tracts are best and should be cut first to make way for new growth. This is a long term project, with statistics co-related in detail with maps of the area.

Columbia Cellulose is in the unique position among British Columbia pulp mills of having been assigned both coastal and interior tracts. Hemlock, balsam and spruce, the most useful species for the manufacture of high alpha pulp, account for about 86 percent of the whole area. About 75 percent of the timberland assigned to the Company is in the interior of the Province, in the great trench which exists northward beyond the Naas river.

ONE COASTAL CAMP

One coastal logging camp is now in operation at Khutzeymateen Inlet, approximately 65 miles up the British Columbia coast from Prince Rupert. Other coastal camps will be opened and operated simultaneously. Permanent headquarters for Columbia Cellulose interior logging operations is at Terrace, 95 miles from the Pacific Ocean on the banks of the Skeena river. Both camps are a far cry from the fabled bunkhouse of old—furnace heated, they include hot and cold running water, a lounge in every dormitory block, and attractive rooms which are shared by two men.

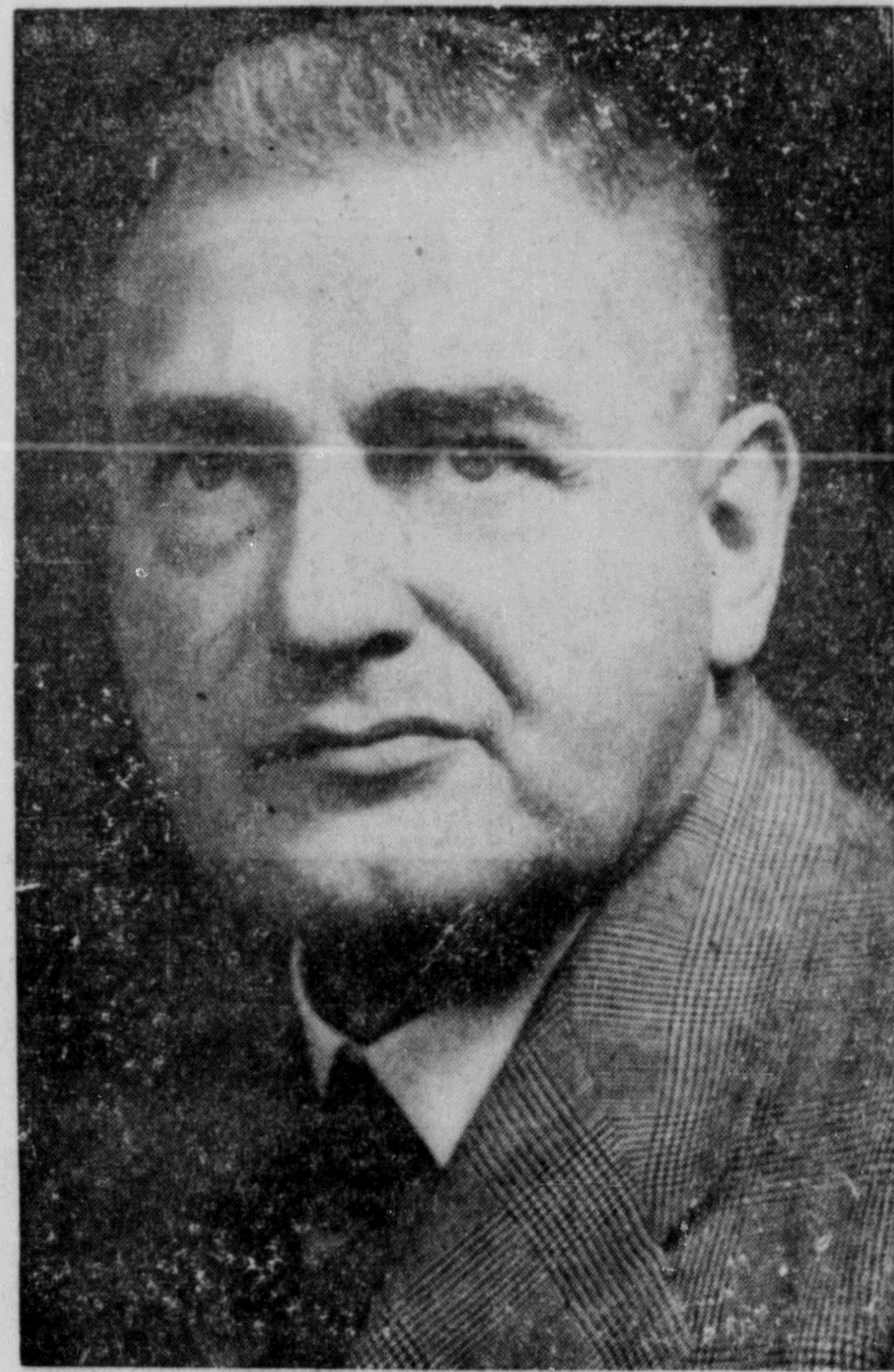
People who came from various parts of the country to work for Columbia Cellulose have found Prince Rupert climate extremely pleasant and agreeable—much different than many of them might have been led to believe.



MAIPING THE TIMBER—At Khutzeymateen, Columbia Cellulose first coastal logging camp, Forester W. A. McBroom maps out areas to be cut. The company practices "patch logging" in which trees are cut in blocks, leaving surrounding blocks standing to provide natural reseeded and re-forestation. Blocks to be cut are mapped out in advance, with the oldest stands being cut first to make way for regrowth.

14 Prince Rupert Daily News
Monday, June 11, 1951

Mr. Anscomb's Message



I am glad of the opportunity of extending very hearty congratulations to the Celanese Corporation of America at this particular time because of the fact that they are opening their huge plant in the Prince Rupert area, which will mean so much to the industrial development of that section of British Columbia. It is evidence of the interest that is taken by outside capital in the resources of British Columbia in the first place, and the stability of its people in the second place. It indicates further that the Province will progress and can progress as long as we operate under a free enterprise system which means we are dependent upon the initiative and ability of the people themselves to progress and develop our country.

HERBERT ANSCOMB,
Minister of Finance.

The steam power plant at Columbia Cellulose mill consists of two boilers which have a continuous rating of 180,000 pounds of steam per hour.

The main line of the National Railways through the Columbia m.l.s.e.
The Columbia Cellulose mill built on two levels on Island. On the 64-foot power plant, wood storage and coal storage 18-foot level are all the departments.

DELIVERY BY AIR FREIGHT AND

SAVE Shipping Time



Loading Freight for the Busy Northland

- Timber Cruising
- Aerial Photography
- Supply Dropping
- Fishing and Hunting Parties

For RATES - INFORMATION - RESERVATIONS

—PHONE 476—

Queen Charlotte Airlines Ltd.
PRINCE RUPERT

a hearty welcome

to all New-comers in PRINCE RUPERT and a "Howdy" to our old Friends —



A full line of Quality Baked Goods

VAN'S BAKERY

611 Third Ave. W. Prince Rupert

NEW LOOK on our OLD FRIEND

As the vast Columbia Cellulose installation on Watson Island swings into production, the people of British Columbia will recognize an old friend clothed in a new look.

High-grade chemical cellulose is not new in British Columbia but the Columbia Cellulose Mill producing it is new and the promising future for the Prince Rupert region becomes possible only because of our old friend... the forests.

For over 100 years the forests of British Columbia have served us well. Now, with Columbia Cellulose's giant digestors feeding off a perpetual yield unit—Forest Management Licence No. 1—they are in a position to continue that service in perpetuity.

Managed Forests are Good Business!

BRITISH COLUMBIA FOREST SERVICE Department of Lands and Forest

DR. C. D. ORCHARD,
Deputy Minister of Forests.

HON. E. T. KENNEY,
Minister.

Best Dressed Women to Wear Timber from B.C.

(By LOIS STEVENS)

Many of the giant trees in northern British Columbia are destined to become filmy summer dresses... handsome decorator fabrics... serviceable year-round suits... even ladies' unmentionables!

Fact is, the new Columbia Cellulose Company purified pulp mill at Prince Rupert is manufacturing the basic material for chemical yarns and plastics. It is estimated that the present production capacity of high alpha pulp is sufficient raw material for 200,000,000 pounds of acetate yarn. And that's a lot of yarn.

With the natural fiber market more and more subject to world conditions as well as the normal hazards of crop failure due to uncontrollable weather conditions, the demand for chemical fibers is increasing. Acetate yarn, a precision yarn which can be controlled and engineered to serve a myriad of purposes, is in

greater demand today than ever before.

Celanese Corporation of America, the largest producer of acetate yarn on this continent, is the first such producer to build its own pulp mill. The demand for acetate, for both peace-time and defence purposes, has become so large that the company felt it must have an assured supply of cellulose to meet this demand.

Thus it is that British Columbia trees will be serving this continent by providing fine fabrics, at controllable prices, for millions of people.

Coal used in the Columbia Cellulose power plant comes from Frank Dackrill's Bulkley Valley Collieries Ltd. at Telkwa, 240 miles east on the Canadian National Railways.

DURING THE 30 YEARS we pioneered a grocery business and served the people of Prince Rupert, we have kept faith in the development of this city with the many outstanding industrial potentialities.

We believe Prince Rupert finally is facing the dawning of a vast expansion era. During the course of huge industries to the Northwest, and while the city is readjusting itself to a new period, we hope to make new friends, tenaciously keep our old friends and continue to provide the brand of satisfactory service that pleases the people of PRINCE RUPERT.

SUNRISE COMPANY LIMITED

We specialize in mail order grocery sales—Distributors of Parity Flour and Buckenfield Flour

Sixth and Fulton Streets — Prince Rupert, B.C.
Phones: 26 and 27 P.O. Box

Timber

WE WHO PIONEERED THE TIMBER BUSINESS IN THIS GREAT NORTHWEST COUNTY
THE HANSON LUMBER & TIMBER CO. LTD.

(Here Since 1907)

TAKES PLEASURE IN WELCOMING THE ADVENT OF

Columbia Cellulose Co. Ltd.

CONGRATULATIONS AND BEST WISHES

ON THIS AUSPICIOUS OCCASION

Hanson Timber & Lumber Co. Ltd., Smithers