

New School Buildings Major City Expenditure This Year

Besides the new elementary King Edward School and the new Booth Memorial High School—a \$750,000 building program—Prince Rupert is served by three other primary, Conrad, Borden and the Annunciation (Catholic) Schools.

Total enrolment is 1,470 in all schools.

Totems Are Attraction

Few, if any, of the unique symbols which feature life on the North Pacific coast offer a stranger lure than the totem poles of yore. Today totem is viewed as an oddity but it is a work of art. It tells a story of dramatic events and each of the carvings is a sequence. The totem provides a family crest, the visible sense of pride of aboriginal people. It has background and age and is undaunted.

Just how much importance is attached to totem poles today can be seen in London, for example, where a 38-foot Haida totem from the Queen Charlotte Islands was erected at South Bank exhibition as a feature attraction for millions from all ends of the earth attending the Festival of Britain.

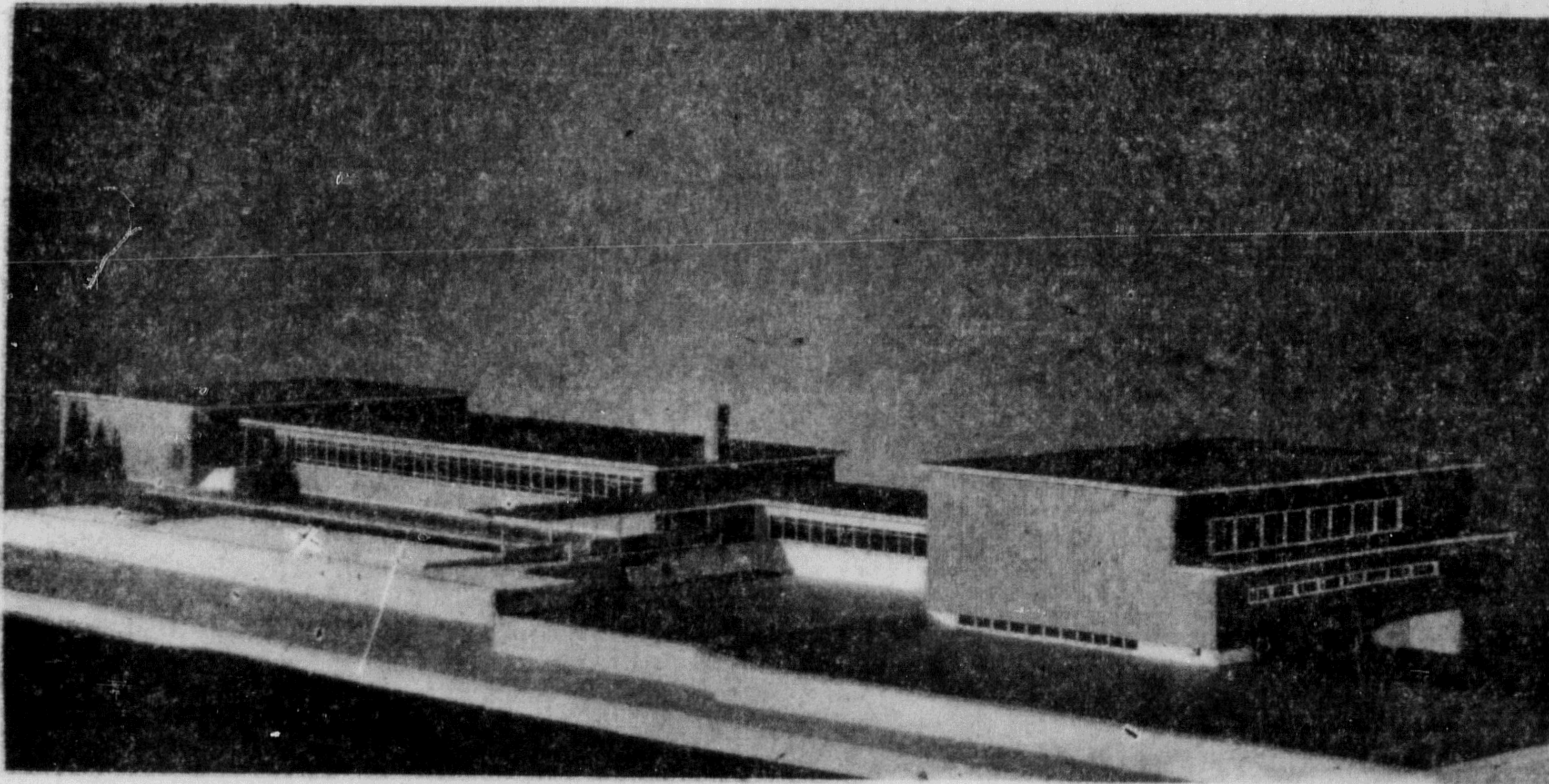
And it is most interesting to see that a totem pole, carved in Wrangell, Alaska, will stand

Building the new schools presents the greatest single item of the current city expenditures. The need of new schools to replace those which have been condemned as public buildings was so great that school board two years ago decided there was no other way out but to build schools.

Both, the new King Edward and the Booth Memorial High School are modern structures in every detail and will contain equipment and facilities to follow all modern trends of the new teaching curriculum.

Although shortage of labor and weather conditions has seriously hampered construction, the new buildings will be ready for occupancy when school starts again in September.

Of the city's mill rate of sixty-four, 27.337 is for schools. The annual provincial government grant works out at \$4.56 per pupil. The general school situation here is good. Building of the two new schools provides adequate accommodation for current needs but leaves little room for expansion.



BOOTH MEMORIAL—New High School

BEST WISHES *from*
YOUR FRIENDLY BARBER

JERRY'S BARBER SHOP
Prince Rupert

Congratulations!

COLUMBIA
CELLULOSE

Welcome and Best Wishes



NORTHERN PRODUCE CO.

SID THOMSON

LEN BREWERTON

... best wishes
to Columbia
Cellulose
Company

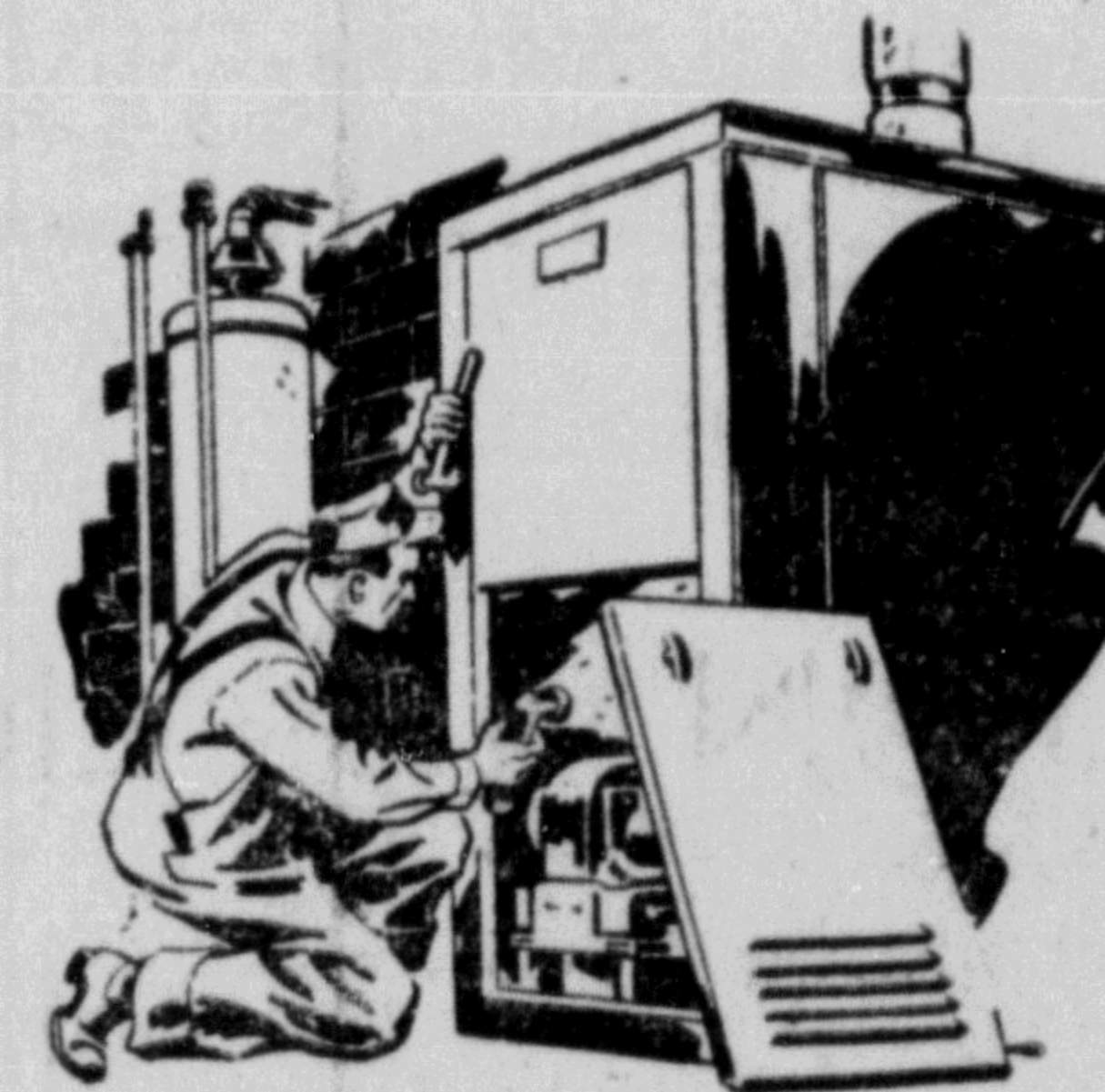


IRON FIREMAN

Industrial, Commercial and
Domestic Oil Burners
and Coal Stokers

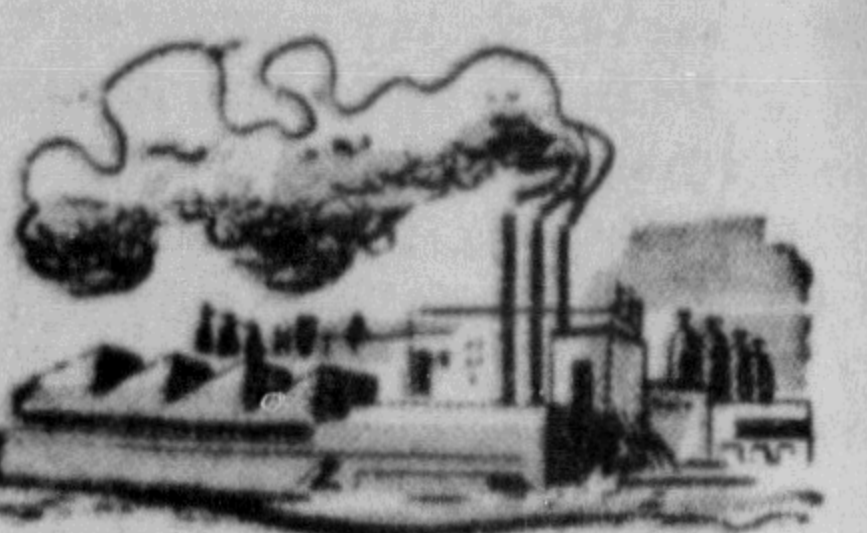
COMPLETE and EFFECTIVE
PLUMBING SERVICE for
HOME and INDUSTRY

Hot-Water Heating For Homes



SAANICH
Plumbing and
Heating

THE KEY TO A NEW ERA



We Salute Northern B.C.
On The Opening Of Its
Newest Industry

PRINCE
RUPERT'S

3

BIG
STORES

- 1—WALLACE'S DEPARTMENT STORE
- 2—RUPERT MEN'S AND BOYS' STORE
- 3—RUPERT PEOPLES STORE

