

THE ONLY RAILWAY SERVING ALL TEN PROVINCES



NICE GOING

Comfort is the word for Canadian National travel. Whether you ride in coach or parlor car, you enjoy roomy armchair ease as the miles speed smoothly by. Stretch your legs when so minded, by a stroll to the smoking compartment or dining car. The hours pass swiftly and pleasantly. You arrive refreshed — when you go Canadian National.



You'll sleep soundly in the soothing quiet of Canadian National night-travel accommodations, berths or rooms . . . air-conditioned for your comfort. Travel by train for dependable, all-weather service.

CANADIAN NATIONAL

Mr. McRae's Greeting

I would like to join with the many others in welcoming the officials of Columbia Cellulose who have come so far to witness the official opening of their plant at Watson Island which now stands as a landmark in the potential industrial progress of Prince Rupert and District. They should not only be wel-



J. D. McRAE, M.L.A.

comed but also highly congratulated for having the foresight to pioneer a new major industry by establishing a pulp mill which is certainly an asset to this area. It is to be assumed that other primary as well as secondary industries will follow their lead.

It is also fitting that a word of praise be passed to those men of various occupations, trades and professions who contributed their skilled labors until the final completion of this project. Through their efforts, the Columbia Cellulose Mill at Watson Island is well constructed and the most modern mill of its kind in the world.

The official opening day marks the passing of the "construction phase" and the passing to the "operational and production phase." With the transition have come the permanent personnel for the mill and woods. I am sure everyone will welcome them as residents of our district and trust they will enter into our community

life and activities. "Welcome" Columbia Cellulose and may your industrial achievements in Northern British Columbia be successful.
J. D. McRAE,
M.L.A. for Prince Rupert.

He Directed Big Change

C. H. KLOTZ
When C. H. Klotz arrived in Prince Rupert in January, 1949, the site for the present Columbia Cellulose purified pulp mill was a rocky island, boasting only a discarded U.S. Army guardhouse and the fine, semi-circular dock which is one of the mill's chief assets.

As Project Engineer, Mr. Klotz directed the construction of the mill which began actual operations in mid-April.

Born in Brockville, Ont., Mr. Klotz received a Bachelor of Science degree in civil engineering from New York University in 1935. From 1935 until 1938 he was apprenticed engineer assistant to the master mechanic at General Chemical Company in Edgewater, New Jersey. From 1938 through 1939 he was in the

New York office of General Chemical Company.

In November, 1939, he joined the Barber Asphalt Company at Perth Amboy, N.J., as project engineer on an asphalt and petroleum refinery. He carried this project from design to the letting of contracts and construction, and resigned in January, 1942, to join the Central Engineering Department of Celanese Corporation of America.

Mr. Klotz has contributed to many Celanese projects. He was field project engineer in charge of completion of a new weaving plant at Stanton, Va., and from January 1944 to April 1947 he was project engineer at the Stanton plant, and the Hopewell, Va., plant.

In April 1947 he began work on plans for the Columbia Cellulose Prince Rupert plant, working in Montreal and New York before coming west two and a half years ago.

*Congratulations
and Best Wishes*

Thompson Hardware Co. Ltd.

Prince Rupert, B.C.

We Join Prince Rupert
in wishing The BEST to

COLUMBIA
CELLULOSE
COMPANY

THREE SISTERS CAFE

City Centre

Congratulations

Columbia Cellulose Company Ltd.

On the completion of your high alpha Cellulose Pulp Plant AT

WATSON ISLAND

In this major industrial development of Northern British Columbia. We wish you every success in the future.

Members Dominion Chartered Customs House Brokers' Association

CUSTOMS BROKERS

A. E. FIELD Box 847 G. R. BRETT Box 378 PRINCE RUPERT, B.C.

*Best of Luck
IN YOUR INDUSTRY*

HARDWARE AND
HOUSEHOLD GOODS

Gordon's HARDWARE

McBride Street
PRINCE RUPERT

*Welcome to
PRINCE RUPERT*

Superior Auto Service Limited

Studebaker and Austin Cars

Box 928 Phone Green 217

PRINCE RUPERT, B.C.

A salute to Columbia

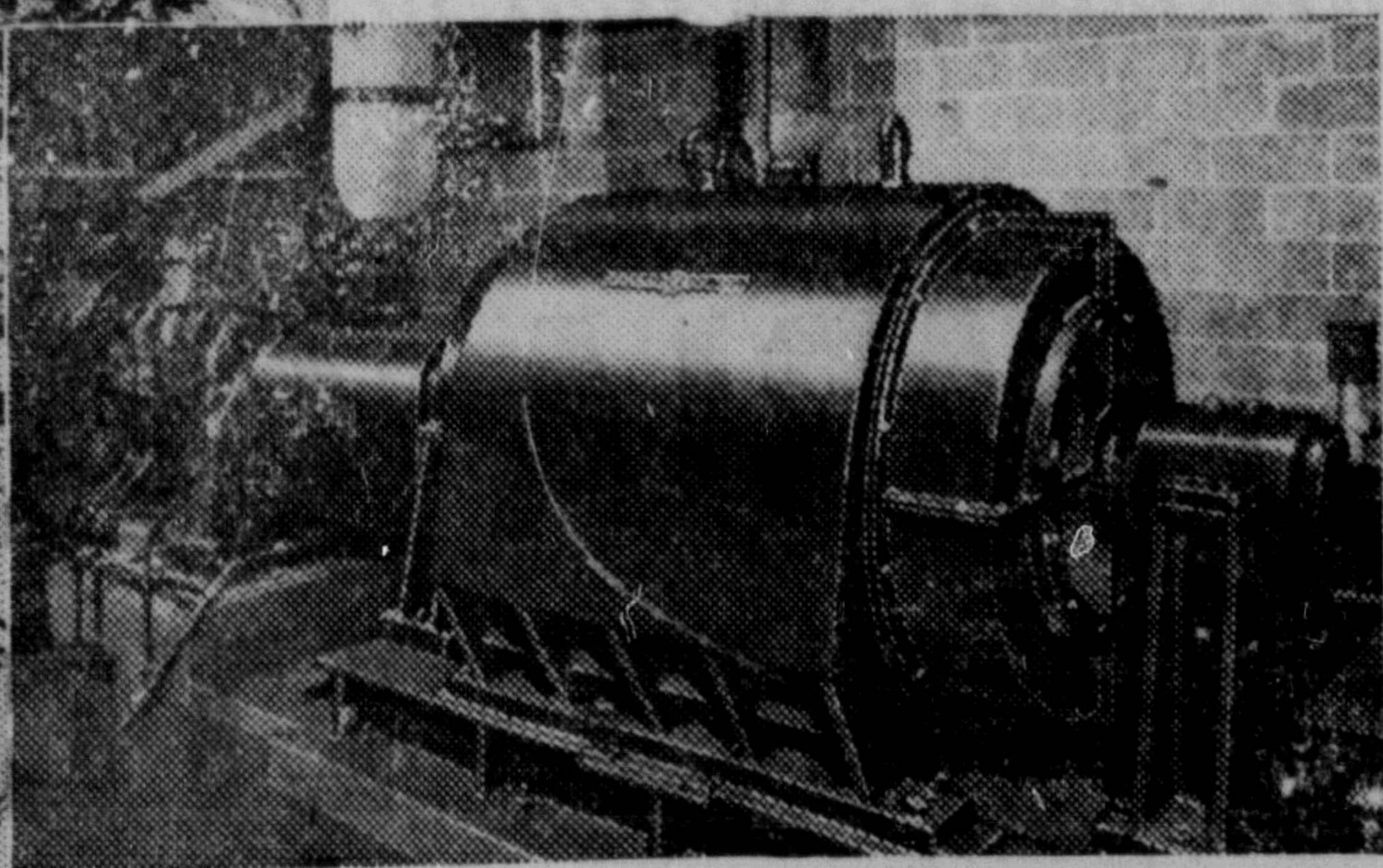
Canadian General Electric salutes the Columbia Cellulose Company Ltd. on its forest farming project.

The pulp plant near Prince Rupert will provide a welcome new source of the high-quality cellulose needed by the textile and plastics industries.

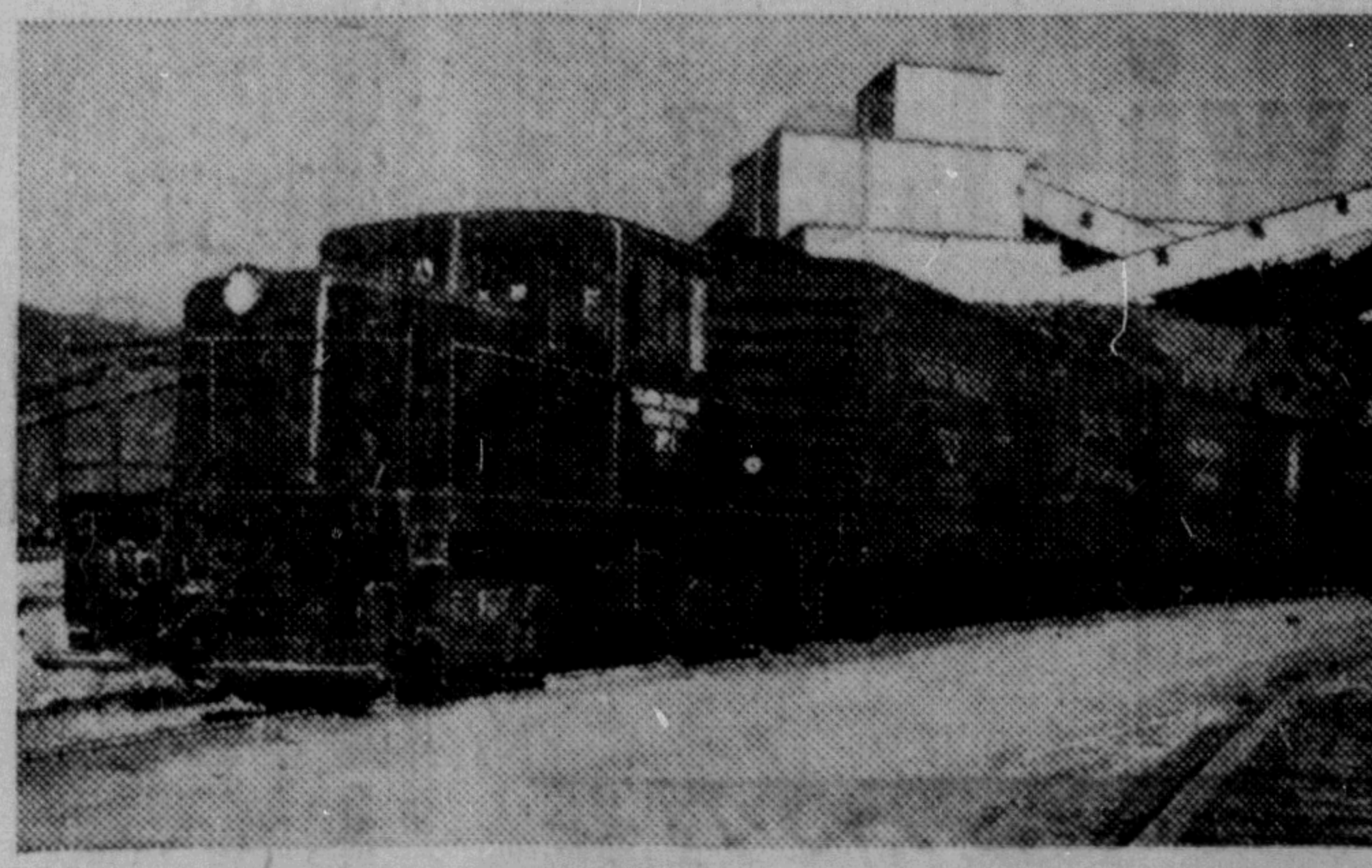
By adding to the self-sufficiency of Canadian industry . . . and by contributing to the economic development of this area, the Columbia enterprise is helping to assure the continued progress of our country

GENERAL ELECTRIC EQUIPMENT

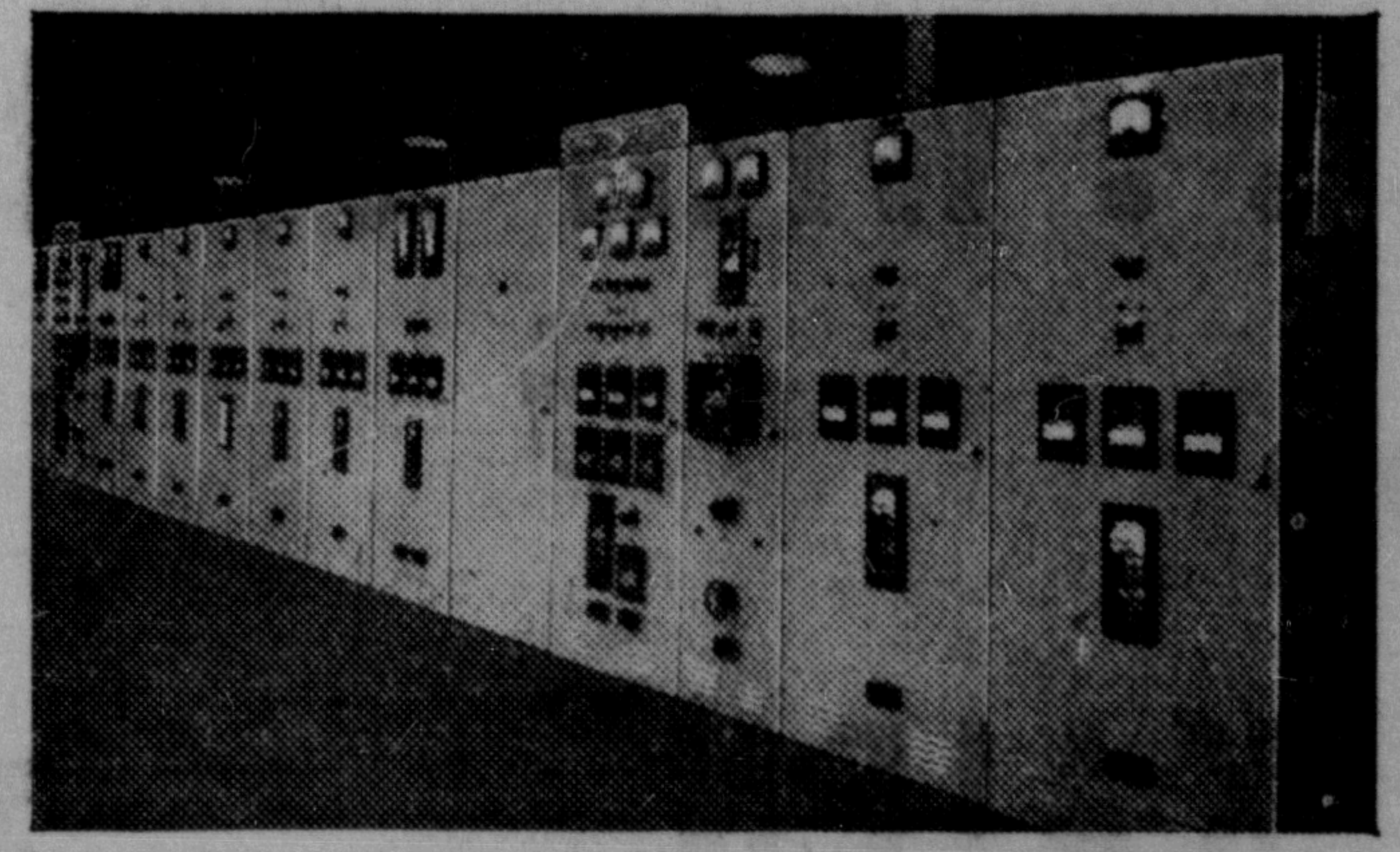
was chosen by the Columbia Cellulose Company Limited



G-E 1000 hp, 3600 rpm Motor, driving high-pressure hydraulic barker pump.



G-E 45-ton Diesel-electric Locomotive hauls heavy loads to the wood yard.



G-E Metalclad 15000 volt magnablast Switchgear installed at the new Columbia Cellulose Plant.

CANADIAN GENERAL ELECTRIC COMPANY

LIMITED

Head Office: Toronto — Sales Offices from Coast to Coast