

# TEN YEARS TRANSFORM COMMUNITY OF TERRACE

36

Prince Rupert Daily News  
Monday, June 11, 1951

## Expansion of Timber Industry Has Brought Amazing Development

A twentieth-century Rip Van Winkle, asleep for only 10 years in the mountains behind Terrace, would be amazed on awakening to see the changes which have taken place in the district due largely to expansion of the timber industry with Columbia Cellulose drawing heavily on the area.

Mr. Winkle would see 2500 people eager with anticipation of greater things to come instead of only 800 residents scattered throughout the district. Ten years ago everyone knew everyone else; a stranger was strange not for long. But today all that is changed.

And with this change, community affairs, activities, have quickened and grown.

The Civic Centre represents one of the main gains accomplished by the community. The building, a former army drill hall, was purchased by public subscription to a fund started by Alf Yoxall, the centre's first director. It has since emerged from a barn-like appearance to become one of the town's show-places.

The auditorium is lined with aluminum foil and the large stage is finished with a backdrop, wings and curtains. Celebrations such as Dominion Day, Labor Day and New Year's Eve are held there, also the Kinsmen May Day festival and the annual Fall Fair.

Facilities for sport include bowling, basketball, badminton and roller skating. Other activities sponsored by the centre are a 16-piece symphony orchestra, conducted by Frank Gavan; the Drama Club, directed by Stan Lang, and the Choral Club, under leadership of Jim Norring-ton.

In the summer a ladies' softball club travels under Centre colors.

The Centre is administered by an association with representatives from each of the town's organizations, which combine to form the hub of its social life. Centre's president is Ben Dodds.

### ORGANIZATIONS

The Masons, IOOF, Orange Lodge and Canadian Legion have their own halls. There is a Women's Auxiliary to the Legion and a Rebekah Lodge. Kinsmen meet twice a month and are devoting this year's service and proceeds to the Civic Centre.

Reconstructed schools have an enrolment of 400 of which 53 are high school students. Modern classrooms are contained in a converted army "H" hut, supplied with new desks, blackboards and adequate lighting. C. W. Michiel, chairman of the school board, is looking forward

to manual arts and home economics classes in the near future.

An active Parent-Teachers' Association, organized by elementary school principal Miss A. Lips, has set up a dental clinic for pre-school and Grade 1 children. Each week P-TA sponsors an afternoon tea for parents and teachers at the schools, and members help make costumes for children who participate in concerts. Mrs. Dudley Little is P-TA's president.

Boy Scout and Cub groups are fostered by the Group Committee, which is behind the boys in all their activities. Summer camp for the boys is at Lakelse Lake, a well-known summer resort within a 100-mile radius, just 20 miles from Terrace.

Girl Guides and Brownies have the backing of an active Girl Guide Association, which is working toward a girls' summer camp.

Once a year, during Boy Scout and Girl Guide Week, a grand rally in the Civic Centre gives the groups an opportunity to show what they have learned at their weekly meetings.

Six churches minister to the community's spiritual needs. They are:

Anglican Church of St. Matthew; Knox United Church; Roman Catholic Church of the Sacred Heart; the Pentecostal Church; Kingdom Hall of Jehovah's Witnesses, and a new Seventh Day Adventist Church. A Baptist Church is to be built this summer.

Behind the town, on the hills, stands a 10-bed Red Cross outpost hospital. Formerly Brigade headquarters, the double "H" building has been converted by the Red Cross Society to meet all hospital requirements. Terrace people shared one third of the cost through public subscriptions, and paid it in three years.

Serviced by a matron, Miss Mabel Taylor, R.N., four registered nurses and two aides, are men's, women's and children's wards, and the nursery which holds five cots and an incubator. Delivery, operating and sterilizing rooms are modernly equipped.

For the staff there are lounges, living quarters, kitchen and dining rooms.

Three doctors service the



COLUMBIA Cellulose Company, Limited, Logging camp at Terrace. View of West Kalum logging road (West Kalum Road) constructed by the Columbia Cellulose Company looking north towards the Company's timber lands. —Photo by Elwood M. Payne, New York



COLUMBIA Cellulose Company, Limited, Logging Camp at Terrace. Harold Lynum, superintendent of the camp at Terrace, at door of office building. —Photo by Elwood M. Payne, New York



TERRACE NESTLES at the head of Skeena River valley, in the centre of miles of arable, rich land which stretches to the base of the mountains. In ten years population of Terrace has grown from some 600 to 2,500. Columbia Cellulose Company started its woods operation from this point.

## Terrace May Become Food Bowl For Area

### RICH HEAVY SOIL AVAILABLE

With some fifty-thousand acres of potential farm land, and with several thousand acres already under cultivation and producing, Terrace looks forward to becoming a food-bowl of the Northwest.

Opening of Columbia Cellulose company pulp mill already has stimulated business and industry and will invite a greater demand for farm produce.

A government survey, started in 1947, reported many areas of rich, heavy soil awaiting only roads and clearing for future development.

A recent development comes with the purchase of a 160-acre farm by L. R. Doorman, a Holland graduate in scientific farming and applied agriculture.

For several years with the colonization headquarters of Canadian National Railways in Montreal, Mr. Doorman expects to be followed by many of his countrymen to open up a 4,000-acre basin for truck-farming. This area, just south of the Skeena river, Terrace, is nearly all swamp-land, drained by a slow-moving

creek, but the Dutch farming specialists feels his people are equal to cope with the problem, as similar conditions exist in Holland.

Other Dutch farmers years ago preceded Mr. Doorman. Peter Van Stolk, for instance, came to Terrace before World War I and has developed his 20-acre farm the Dominion government is using it as an illustration station. Mr. Van Stolk even grows black Hamburg grapes and peaches successfully under glass.

With the use of suitable fertilizers and scientific management, others have shown that only 10 to 20 acres will support a family.

Along with other parts of northwestern British Columbia Terrace is looking to the future for fulfillment of a long-term promise.

## TERRACE

Business centre of important Columbia Cellulose logging operations.

Incorporated as village in 1927. Area of village corporation, 750 acres.

Estimated population, 2,500.

Highway, railway and commercial aircraft transportation.

Power—Supplied by B.C. Power Commission.

Water—Reservoir capacity, 140,000 gallons.

Bank—Royal Bank of Canada. Well equipped volunteer fire department.

Domestic Government Telephone and Telegraph Service.

Newspaper—Omineca Herald.

Red Cross Hospital.

Modern schools.

Recreational facilities—Civic Centre, Theatre, ball park, unsurpassed fishing and hunting.

Lakelse Lake camping resort.

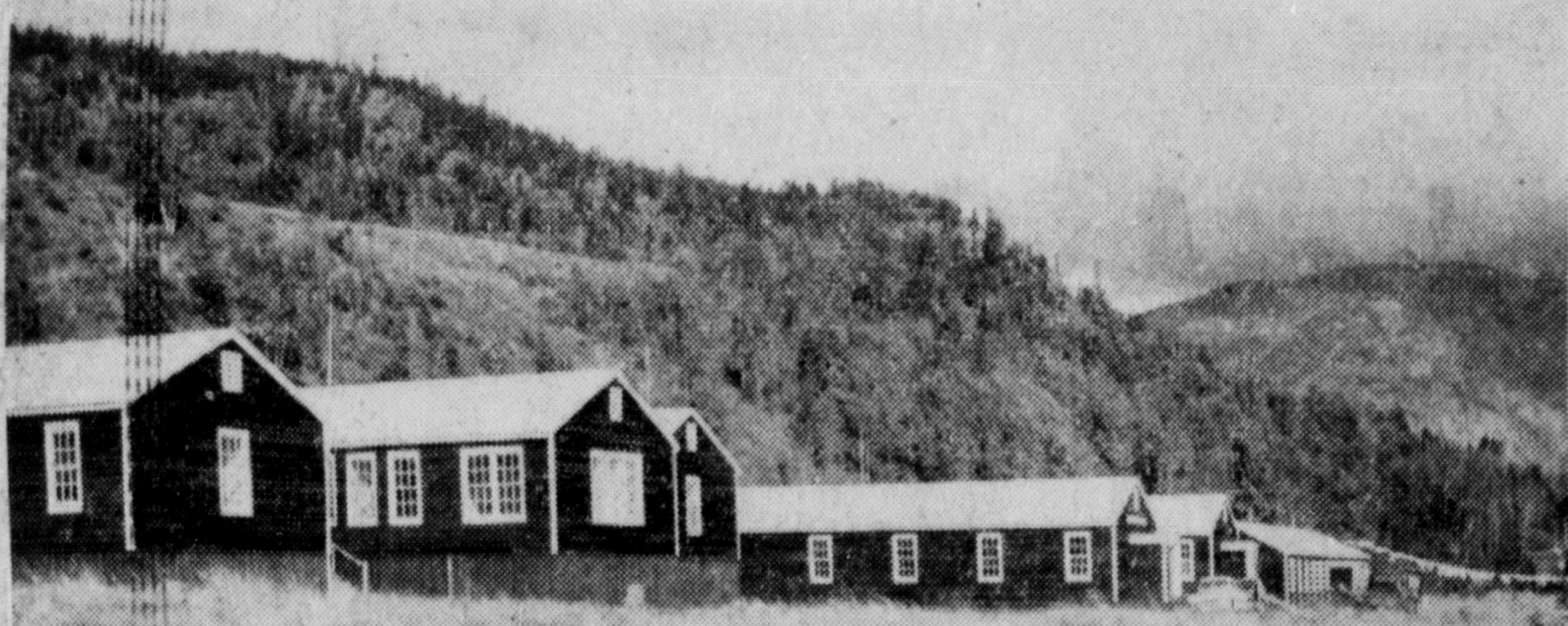
Churches—Anglican, Pentecostal Roman Catholic, United.

Service organizations—Board of Trade, Canadian Legion, Kinsmen.

Two hotels, two auto courts.

Chairman of Board of Village Commissioners, Ed. Haugland.

President of Board of Trade, Peter Gillanders.



COLUMBIA Cellulose Company, Limited, logging camp at Terrace, Men's quarters; office building; Cook house. —Photo by Elwood M. Payne, New York

We Take This Opportunity to Join in *Congratulations and Best Wishes* to

## COLUMBIA CELLULOSE COMPANY

★ ★ ★ ★ ★

Terrace Hotel

Terrace Machine Shop and Garage

Terrace Drugs

Terrace Building Supply Ltd.

Johnstone and Michiel Ltd.

Terrace Shoe Store

★ ★ ★ ★ ★

Skeena Mercantile

Terrace Bakery

Sargents, Robin and Sait

J. H. Smith Ltd.