

The Daily News Takes Pleasure in Presenting This Special Edition to Welcome the Opening of the
COLUMBIA CELLULOSE COMPANY LTD.

*Mr. Blancke's Greeting
To Rupert Community*

IT GIVES ME GREAT PLEASURE TO GIVE THIS PERSONAL WORD OF GREETING TO THE COMMUNITY OF PRINCE RUPERT.

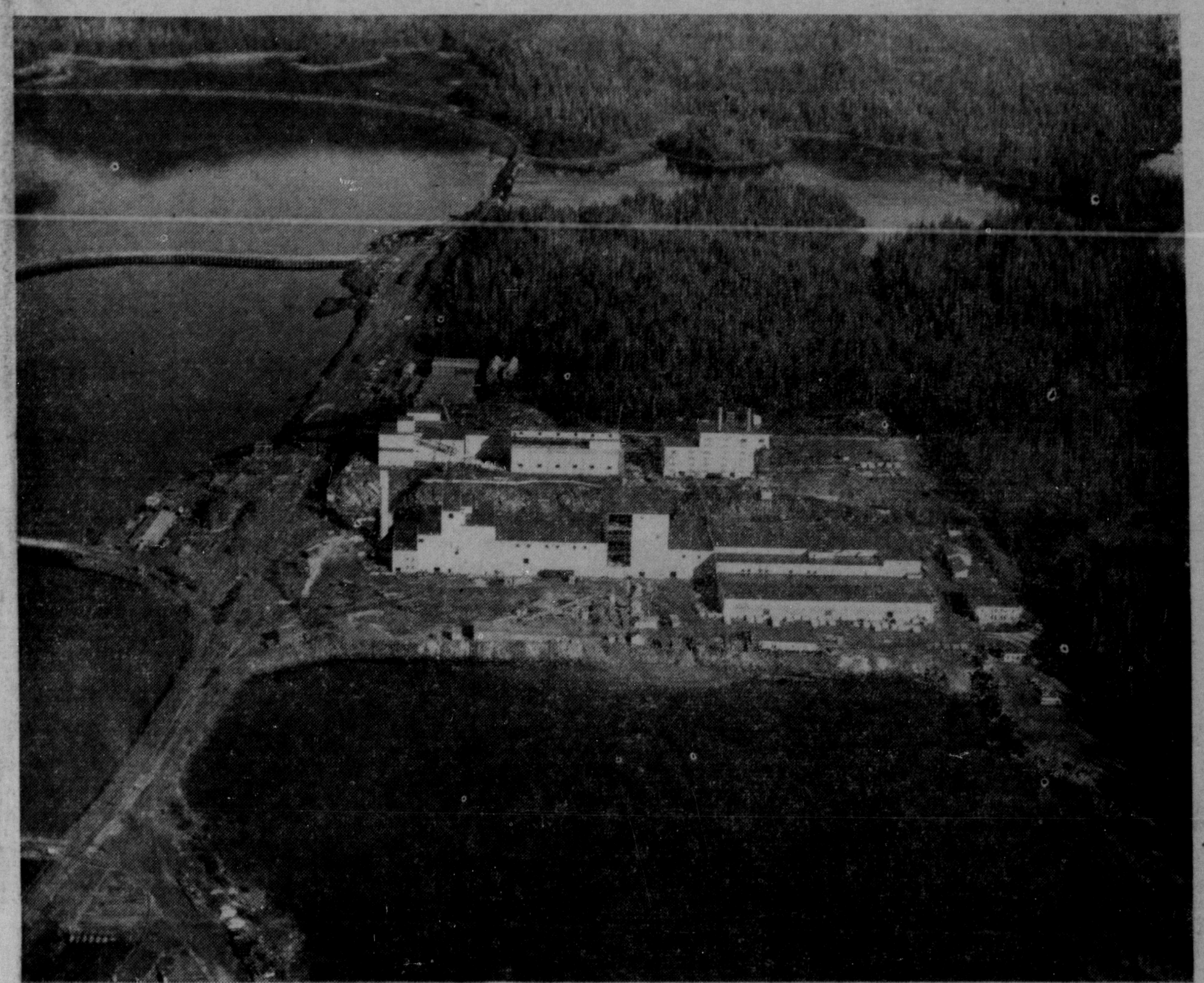
WITH THE DEDICATION OF THE PRINCE RUPERT MILL OF COLUMBIA CELLULOSE COMPANY, LIMITED, WE ARE BEGINNING WHAT HAS BEEN AN IMPORTANT FACTOR IN OUR PROGRESS. WE HAVE GREAT FAITH IN PRINCE RUPERT. THE CITY IS RICHLY ENDOWED WITH ITS SUPERB HARBOUR, ITS TRANSPORTATION FACILITIES AND THE GREAT NATURAL RESOURCES OF ITS ENVIRONS.

WE BELIEVE THAT COLUMBIA CELLULOSE COMPANY WILL CONTRIBUTE ITS SHARE TO THE REALIZATION OF PRINCE RUPERT'S FUTURE DEVELOPMENT.

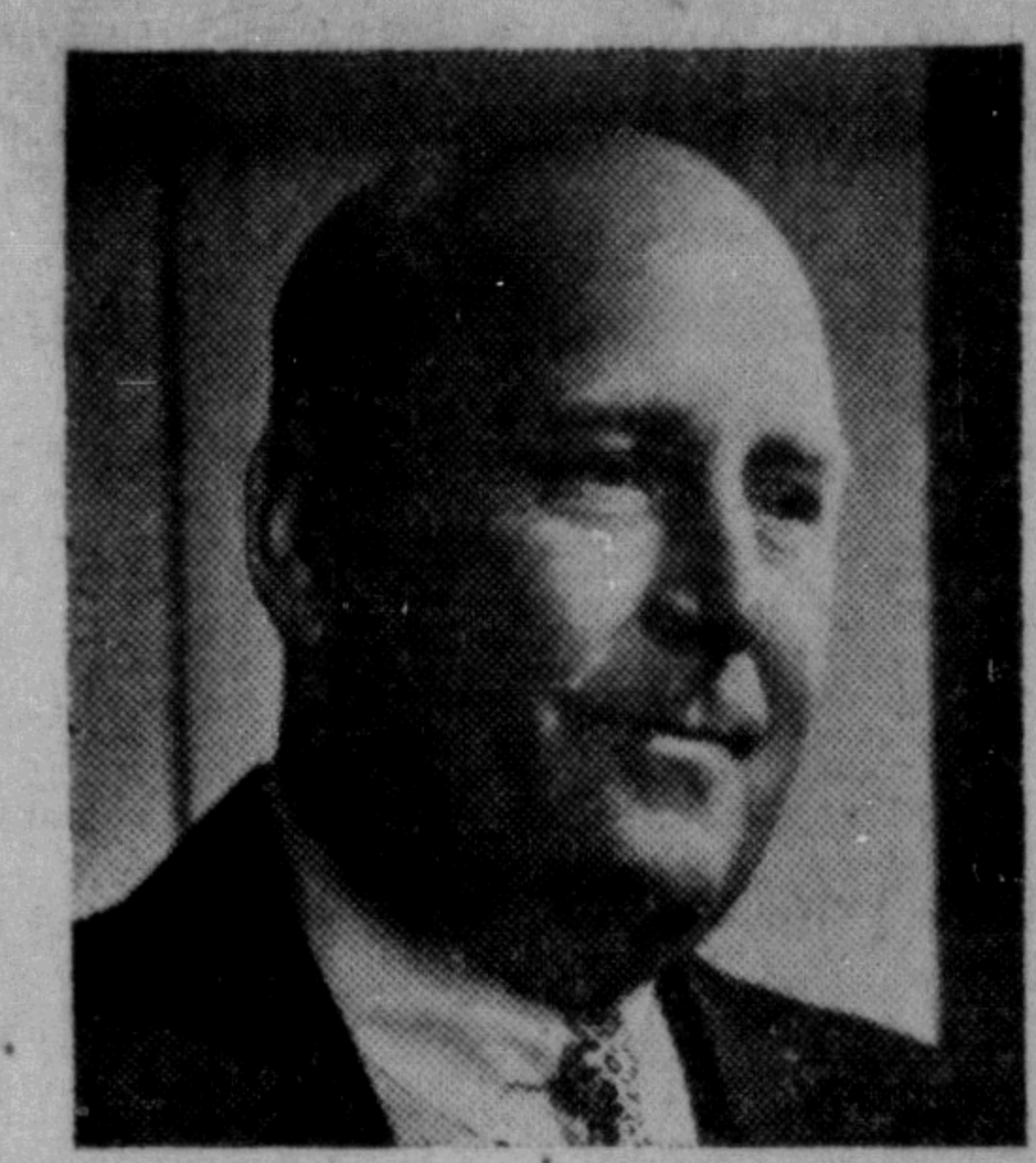
OUR PLANNING IN REGARD TO THE PLANT HAS CENTERED AROUND THE PRINCE RUPERT COMMUNITY. OUR EXECUTIVE OFFICES ARE IN THE CITY. OUR STAFF MEMBERS ARE MAKING PRINCE RUPERT THEIR HOME. MOST OF THE EMPLOYEES AT THE MILL HAVE THEIR HOMES IN PRINCE RUPERT.

ALL IN ALL, WE FEEL WE ARE AN INTEGRAL PART OF THE COMMUNITY. IT WILL BE OUR CONSTANT ENDEAVOR TO EARN THE REPUTATION OF BEING "GOOD NEIGHBORS."

Harold Blancke
President
Columbia Cellulose Company, Ltd.



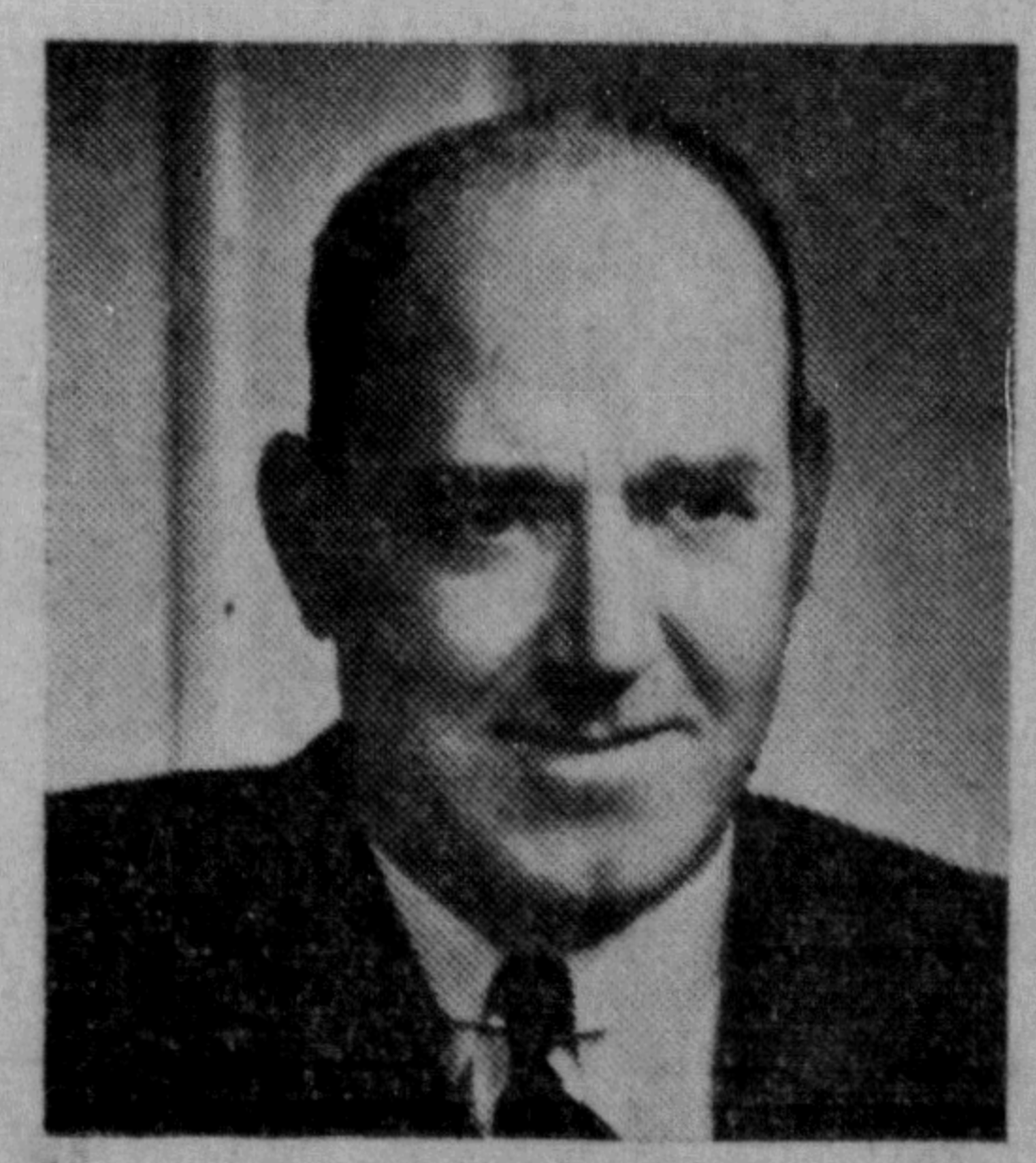
THE PLANT—This is the picturesque setting of the great \$27,000,000 high alpha dissolving pulp mill of Columbia Cellulose at Prince Rupert which is being formally opened tomorrow. Here rail and ocean meet to make a uniquely strategic site for this major industry. (Photo by Wrathall)



★
HAROLD BLANCKE
PRESIDENT,
Columbia Cellulose Co. Ltd.



★
GEORGE SCHNEIDER
VICE-PRESIDENT
Columbia Cellulose Co. Ltd.



★
G. H. RICHARDS
VICE-PRESIDENT
Columbia Cellulose Co. Ltd.

THE SOURCE—This unique map shows the various timber areas within a 150-mile radius of the plant at Prince Rupert which the Provincial Government of British Columbia made available to the Columbia Cellulose Co., Limited. It is a sufficient forest area to maintain the pulp mill capacity in perpetuity. These tracts were granted under Forest Management License No. 1, and constitute the first of the type in the Province. The area of the forest is 600,000 acres ranged along the Skeena and Naas watersheds. Fifty per cent of the forest growth are hemlock trees. Most of the timber is non-resinous and therefore well suited to the sulphite process of pulping.