



Just Arrived - Fresh and Crisp

CHRISTIE'S

MARVEN'S

- Asst. Ice Wafers
Cocoanut Bar
Cocoanut Brittle
Swiss Chocolate
Fig Bar
Ginger Nut
Iced Animal
Rusks
Sultanas
Arrowroot
Asst. Fruit Sandwich
Abernethy
Asst. Biscuits
Apple Blossom
Cherry Rings
Cafe Noir
Jelly Wafers
Lemon Snaps
Asst. Marshmallow
Marshmallow Fingers
Royal Canadian

BISCUITS

- Cocoanut Bar
Cocoanut Fingers
Fluted Vanilla
Ginger Wafers
Social Tea
Fig Bar
Fancy Wine
Creams
Peach Bar
Ginger Bar
Honey Fingers
Apricot Wafers
Lemon Snaps
Royal Milk Lunch
Chocolate Drops
Popular Mixed
Sultanas
Special
Apple Blossom
Honey Fingers
Afternoon Tea

SPECIAL! SPECIAL!

- Christie's Assorted Tins, per tin \$2.00
Christie's Sodas, per tin .65
Ramsay's Sodas, cartons 3 for 1.00
School Cakes, per lb. .25
Christie's Biscuits in packages---Arrowroot, Graham Wafer, Water Wafer, and Social Tea, per package .25

Dentistry

DON'T NEGLECT YOUR TEETH!
One Decayed or Missing Tooth lowers Your Efficiency

Dr. Bayne

OFFICE HOURS---
Morning, 9 to 12; Afternoon, 1.30 to 5.30; Saturdays, 9 to 12 only,
Evenings, Tuesday, Wednesday and Friday, from 7 to 9
Dental Nurse in attendance
Phone 109 for appointment

Parkin & Ward Electric Co.

LIMITED
Electric Engineers and Contractors
We carry a full line of Electric Ranges, Washing Machines, Vacuum Cleaners, Hot Plates, Grills, Irons, Toasters, and Fixtures.
Estimates furnished on House wiring and Motor installation
MARINE DEPARTMENT
Agents for
Regal Gasoline Engines for trolling
Caille Perfection Motors Titan Storage Batteries
Moser Spark Plug
(The Plug that was chosen for the Transatlantic flights)
Our service department will help you to plan your Lighting Equipment. A full line of Dynamos, Storage Batteries, Switch boards, Conduit, Cable, Lamps, Searchlights, etc.
We make Lighting Sets to Suit Your Boat
Storage Batteries charged and repaired (no time lost while your battery is being charged, we have one at your disposal.)
Third Avenue (opposite Post Office) PHONE 125

See ALBERT & McCAFFERY before you purchase

Anything in the Building Line

We handle
Prince Rupert Spruce Co.'s Lumber
B. C. Mill's Fir
Lime Cement Plaster
Brick Shingles Laths

Albert & McCaffery, Ltd.

G. G. McGEER IS COMING HERE

Expected to Arrive on Saturday to Address Meetings in District.

LOAN CAMPAIGN TO COMMENCE OCT. 27

G. G. McGeer, M.P.P. for Richmond, is expected here on Saturday in connection with the Victory Loan campaign for this district and it is expected that he will address meetings throughout the district and explain the aims and objects of the campaign. Mayor McClymont received a wire this morning notifying him that Mr. McGeer is coming and asking him to make arrangements. Mayor McClymont has charge of the organization not only for Prince Rupert, but for the whole district as far as Hazelton, Stewart and Graham Island. He is arranging first for the outside points and in a few days will take up the matter of local committees. The actual campaign commences on October 27 and continues for three weeks.

Sport Briefs

Mickey Mackay has signed to play with the Calgary Columbus Club hockey team this year.

Regina has a big cribbage league this winter. This is the latest thing in sport and Regina has twenty teams out for the championship honors.

Ad. Wolgast, former lightweight champion, knocked out Walter Kane in an eight-round bout at Yuma, Arizona.

It is rumored that Johnny Evers will return to the National League to manage the Pittsburg Pirates.

The Vernon baseball club won the Western Minor League Baseball championship by defeating St. Paul, of the American Association, at Los Angeles on Friday. The series went the full nine games and both teams were very evenly matched. The score of the deciding game was 2-1.

Ted Kid Lewis is after a bout with Benny Leonard. Lewis defeated Mike O'Dowd in Syracuse on Labor Day and thinks he is entitled to meet the lightweight champion, as he had offered to fight O'Dowd. When Leonard and Lewis last fought opinion was about evenly divided on the merits of each, although Leonard got the popular decision.

ETHEL CLAYTON IN "MAGGIE PEPPER" AT WESTHOLME THEATRE

Ethel Clayton is to be here tonight in picture at the Westholme Theatre in the feature picture "Maggie Pepper." This is a fine film and is up to the usual standard of Miss Clayton's work. Fatty Arbuckle is also on the program in "The Cook."

At the Empress, Ruth Stonehouse in "The Edge of the Land" is a great picture. There is also the thirteenth episode of "A Fight for Millions" and a comedy.

FORT FRASER

Mr. and Mrs. Fred Aslin have moved to Burns Lake. Though he will make his home there he will still run his store here.

All unsurveyed pre-emptions in this district have been at last surveyed by V. Sheldrup, who has left for Burns Lake.

G. Sumner, of Vancouver, has returned to his home after visiting with Mr. Fraser of the Government office. Mr. Sumner has lived thirty years in north central British Columbia and still believes this is the best farming district in the country.

D. McAloney arrived from Usk last evening to become first-aid man in the local shipyards. Mr. McAloney formerly held a similar position on the Dolly Varden Railroad.

J. B. Daniell and Walter H. Crocker, both of Prince George, are registered at the Hotel Prince Rupert, having arrived on last night's train.

TO SEE OURSELVES AS OTHERS SEE US

In a letter to the Dawson News, George C. Sharp, formerly manager of Jack McLennan's Drug Store at the northern capital, says:

"Prince Rupert was a tremendously busy place, and certainly is the place of north B. C. if one can stand the climate. The future looks good. The first chap I met was our old friend, Simpson, late of Dawson. I bought a ticket Prince Rupert to Winnipeg, 1,755 miles, by way of Prince George, Edmonton, Saskatoon. The scenery up the Skeena river is grand; also about Mount Robson and Jasper. Alberta is badly hit by drought and the country looked bad, but the towns and cities looked good and thrifty, especially Edmonton, Saskatoon and Winnipeg. I thought Saskatoon extra good."

FIFTEEN YEARS IS ADDED TO LIFE BY LIMITING LIQUORS

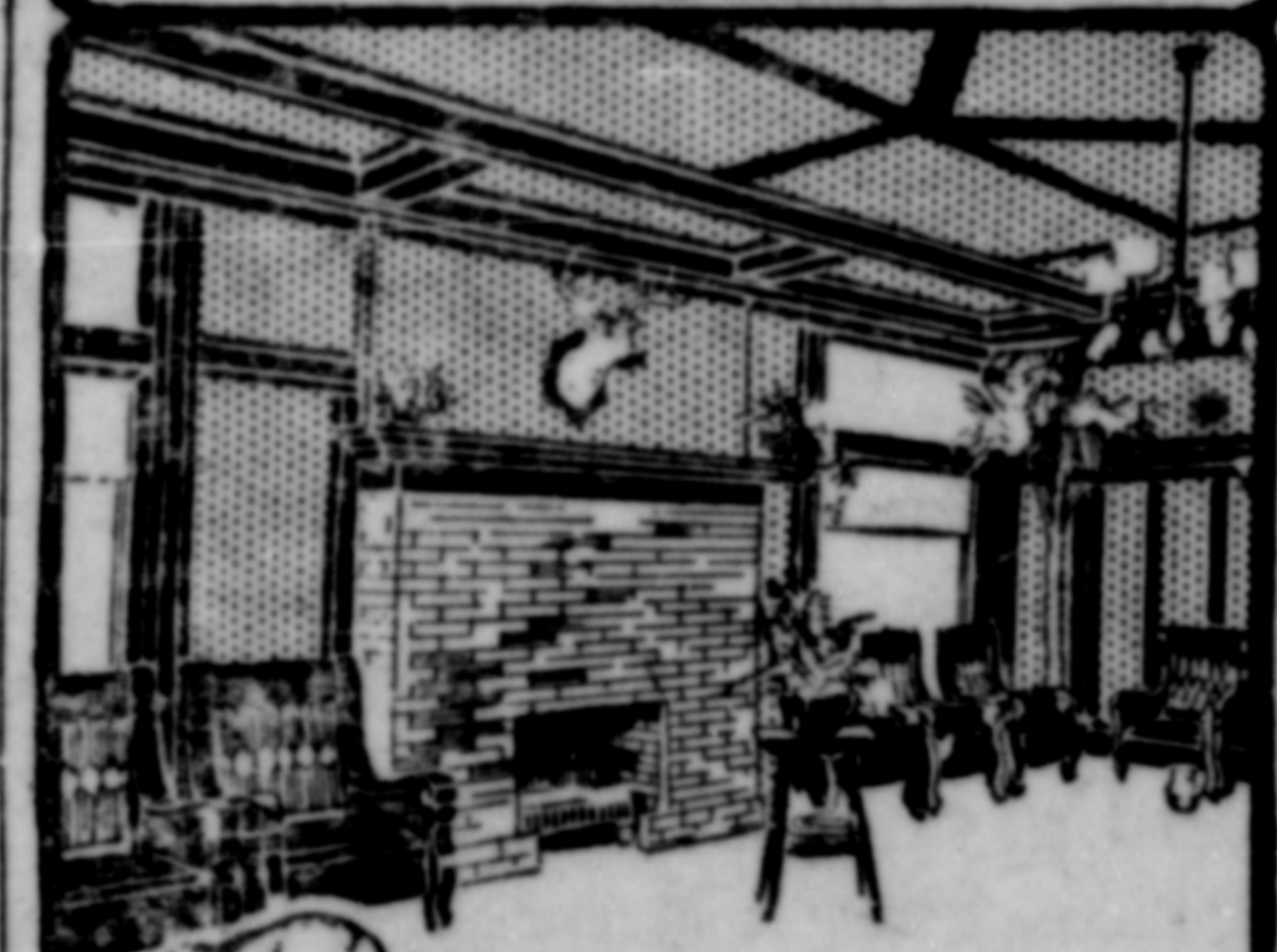
(Special via G. T. P. Telegrams.)
New York, Oct. 21.—Progress in surgery in medico-therapeutics since the civil war have added fifteen years to the average human life, Dr. W. Mayo, of Rochester, Minn., told the annual Congress of Surgeons, with continued promise and aided by the limiting of liquors, fifteen years more would be added.



A. W. EDGE CO. DISTRIBUTORS

2nd Avenue - Prince Rupert

BEAVER BOARD FOR WALLS OF CHARACTER



If it hasn't the Beaver trade-mark it isn't Beaver Board

Finish off your attic—partition off a room in the basement—put new walls in your garage. Do it with Beaver Board. For your summer cottage, for your new home, for the club, the store or the office—Beaver Board. It takes the place of lath, plaster and wallpaper, gives you better walls and ceilings, more handsome, more sanitary, more durable.

There is every reason for—and none against your using Beaver Board. Get the genuine. It will pay you to be particular.

A. W. EDGE CO. Distributors, Prince Rupert

WRIGLEYS

5c a package before the war

5c a package during the war

5c a package NOW

THE FLAVOUR LASTS SO DOES THE PRICE!



INDIVIDUALITY!

IS THE MARK OF SUCCESSFUL BUSINESS AND IS SHOWN IN FOOTWEAR AS IN OTHER THINGS.

You can obtain Individuality and distinction in the SHOES AT OUR STORE. You will be convinced by examining our stock.

McARTHUR'S Shoe Store THIRD AVE.

586 - Phone - 586

The goods on our shelves are all priced in large plain figures to aid you in your shopping.

LINZEY'S GROCERY

We sell Frisbie Engines Complete and ready to install.

FRISBIE

the friendly motor

Frisbie Motors give long, uninterrupted service with practically no repairs except occasional grinding of valves. Valves in cages; accessible in a few seconds. An "all muscle" construction throughout, every part designed for hard work. Overhead valves, opening directly into combustion chambers. No pockets or crevices to gather carbon, and waste fuel. This type of construction effects a gain of

15 to 20 per cent. more power

than is possible with L or T-Head designs. Intake and exhaust manifolds are cast integral with the cylinder; miles ahead of the old, leaky, bolted-on manifolds. Large valves insure full charge on the intake and a complete, clean exhaust.

1 to 6 CYLINDERS—5 to 75 HORSEPOWER

Frisbie Motors are made in following sizes: 1-cyl., 5 and 7 H.P.; 2-cyl., 10 and 16 H.P.; 3 cyl., 18 and 25 H.P.; 4-cyl., 30 and 40 H.P.; 6-cyl., 50 and 75 H.P.—Bore and Stroke, 4 1/4" x 5" and 6" x 6". For work or play, the Frisbie will measure up to your hardest tests.

- 5 Horse Power, \$450
7 " " \$600
10 " " \$700
16 " " \$900
25 " " \$1400

Ask the Man who has used one

Lipsett Cunningham Co., Ltd.