

PRINCE RUPERT VIEWS IN VERY EARLY DAYS



SOME OF FIRST CITY FATHERS
In front of pioneer City Hall which stood on Centre Street.

Prince Rupert's City Fathers Since Year 1910

1910
Mayor—Fred Stork.
Aldermen—F. H. Mobley, Dr. A. A. McIntyre, F. D. Pattullo, W. P. Lynne, A. R. Barrow, V. W. Smith, J. H. Hilditch, G. R. Naden.

1911
Mayor—Wm. Manson.
Aldermen—V. W. Smith, G. W. Kerr, D. W. Morrissey, J. A. Kirkpatrick, J. H. Hilditch, S. M. Newton, Dr. W. B. Clayton, T. D. Pattullo.

1912
Mayor—S. M. Newton.
Aldermen—L. Bullock-Webster, Hamilton Douglas, Dr. W. B. Clayton, J. Dybhavn, T. R. Maitland, G. W. Kerr, D. W. Morrissey, W. H. Montgomery.

1913
Mayor—T. D. Pattullo.
Aldermen—M. P. McCaffery, G. W. Kerr, George Leck, John Dybhavn, L. Bullock-Webster, Douglas Sutherland, G. R. Naden, T. R. Maitland.



SOON AFTER INCORPORATION
Now Second Avenue and Sixth Street looked in those days.

1914
Mayor—S. M. Newton.
Aldermen—T. R. Maitland, G. W. W. Kerr, Thomas McClymont, W. H. Montgomery, John Dybhavn, D. W. Morrissey, Victor Basso-Bert, D. H. Morrison.

1915
Mayor—S. M. Newton.
Aldermen—T. R. Maitland, G. W. W. Kerr, Thomas McClymont, J. Nicol, W. H. Montgomery, A. W. Edge, D. W. Morrissey, William Beveridge.

1916
Mayor—M. P. McCaffery.
Aldermen—Thomas McClymont, R. J. D. Smith, O. H. Nelson, W. H. Montgomery, G. B. Casey, John Dybhavn, W. G. Barrie, D. C. McRae.

1917
Mayor—M. P. McCaffery.
Aldermen—Thos. McClymont, R. J. D. Smith, O. H. Nelson, D. C. McRae, W. H. Montgomery, John Dybhavn, George B. Casey, Thomas McMeekin.

1918
Mayor—Thomas McClymont.
Aldermen—H. B. Rochester, G. B. B. Casey, R. J. D. Smith, J. Dybhavn, D. C. McRae, Thomas McMeekin, W. J. Kirkpatrick, W. G. Barrie.

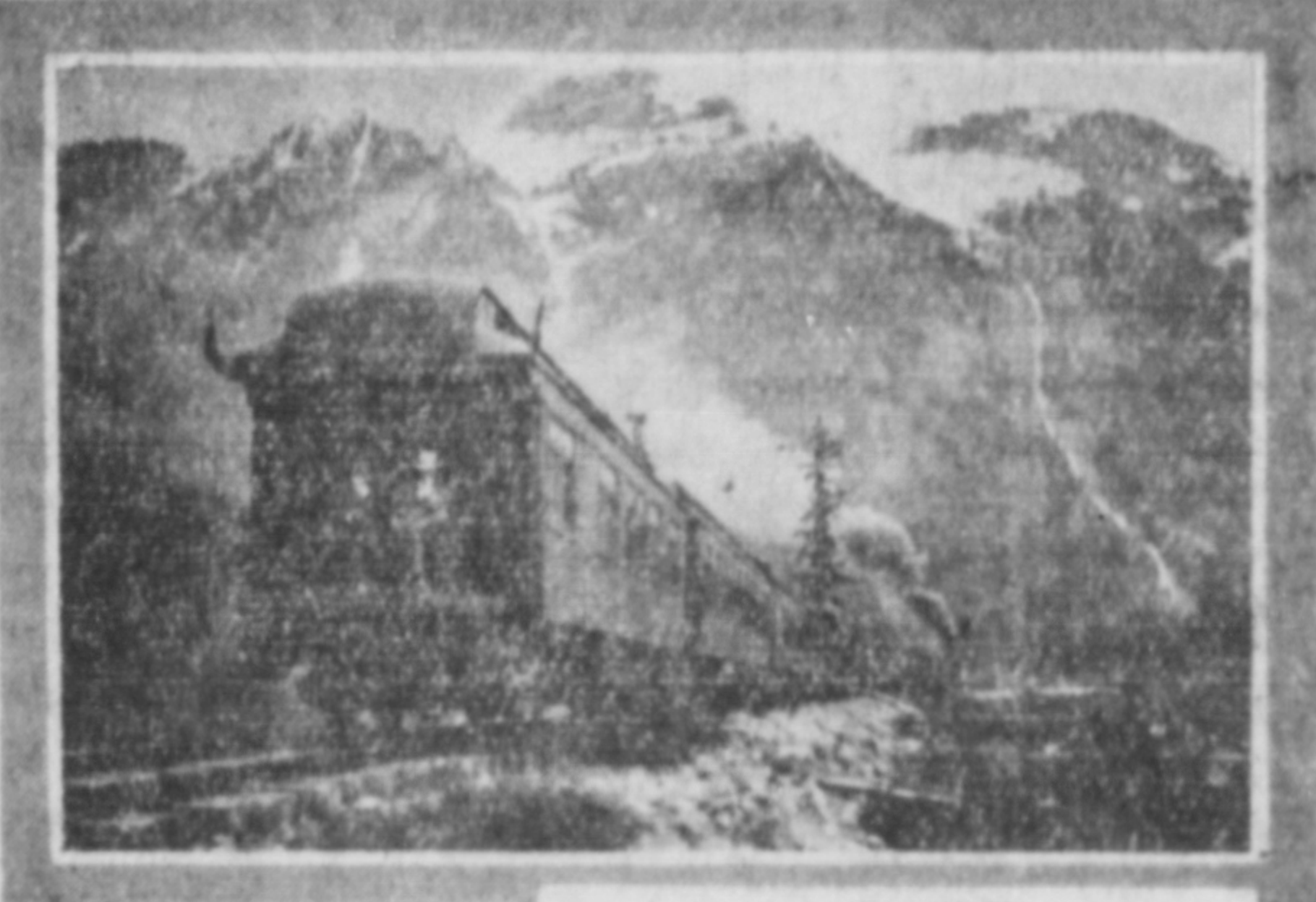
1919
Mayor—Thomas McClymont.
Aldermen—G. B. Casey, H. Rochester, John Barrie, C. C. Perry, D. C. McRae, Thomas McMeekin, W. G. Barrie, W. J. Kirkpatrick.



The last big blast on the Townsite
Jan. 21, 1914



The Three Tunnels at Kispiox
Canyon on G.T.P.



First Passenger Train from Prince Rupert at
Mile 45—June 14, 1911



Arrival of First Through Train at Prince
Rupert, April 9, 1914



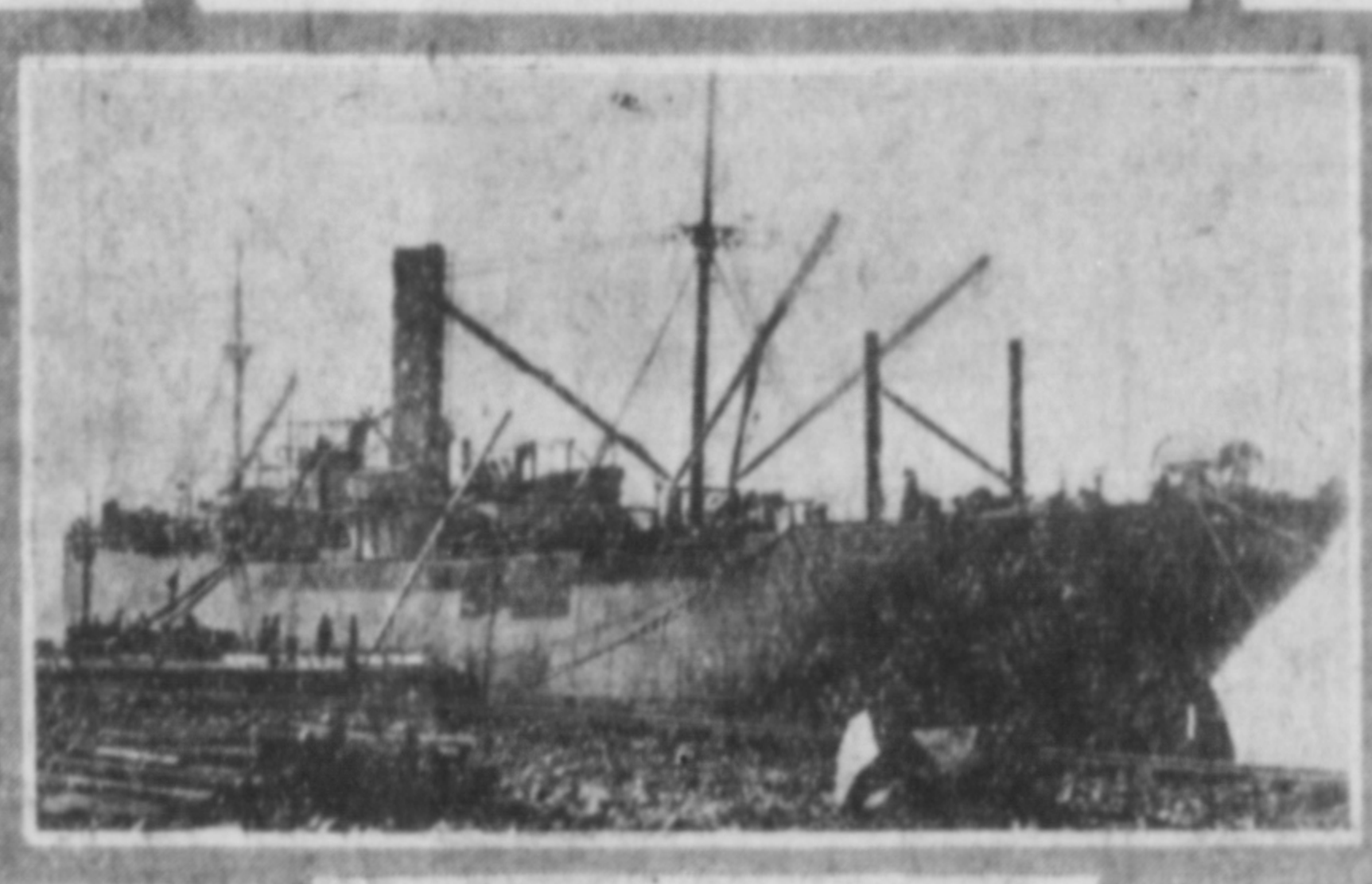
First G.T.P. Engineers at Prince Rupert
Jas. Bacon at the camera left, J. H. Pillsbury at the camera right



The Steam Shovel's last pass at
Prince Rupert



Along the Grand Trunk Pacific



First Steel Rail Arriving



Track-layers making the last connection on the
G.T.P. on Apr. 7, 1914, near Ft. Fraser

1920
Mayor—McClymont.
Aldermen—H. R. Rochester, C. C. Perry, John Currie, John Dybhavn, G. B. Casey, G. W. Kerr, W. Wilson-Murray, J. C. McLennan.

1921
Mayor—H. B. Rochester.
Aldermen—J. H. Kelly, J. Parker, G. J. Fritzel, George Kerr, John Dybhavn, T. W. B. Sides, C. C. Perry, M. J. McNeil.

1922
Mayor—H. B. Rochester.
Aldermen—C. C. Perry, J. Dybhavn, R. A. McLeod, Theo Collart, G. W. Kerr, T. W. Silverides, J. Kelly, W. H. Montgomery.

1923
Mayor—S. M. Newton.
Aldermen—S. D. Macdonald, H. Munro, Theo Collart, Alex McKenzie, M. M. Stephens, John Currie, R. F. Perry, J. A. Smith.

1924
Mayor—S. M. Newton.
Aldermen—S. D. Macdonald, Collart, G. B. Casey, R. T. Perry, S. P. McMordie, C. V. Eviatt, F. Clapp, J. A. Smith.

1925
Mayor—S. M. Newton.
Aldermen—W. M. Brown, G. Casey, John McKechnie, S. P. McMordie, R. F. Perry, Oscar Larson, M. M. Stephens, J. A. Smith.

1926
Mayor—S. M. Newton.
Aldermen—Joseph Greer, R. Perry, M. M. Stephens, Oscar Larson, W. J. Greer, W. M. Brown, B. Casey, John McKechnie.

1927
Mayor—S. M. Newton.
Aldermen—W. J. Greer, W. M. Brown, G. P. Tinker, P. H. Linzey, Joseph Greer, R. F. Perry, M. M. Stephens, Oscar Larson.

1928
Mayor—S. P. McMordie.
Aldermen—Theo Collart, Frank Dibb, A. J. Prudhomme, G. W. Rudderham, W. J. Greer, W. M. Brown, G. P. Tinker, P. H. Linzey.

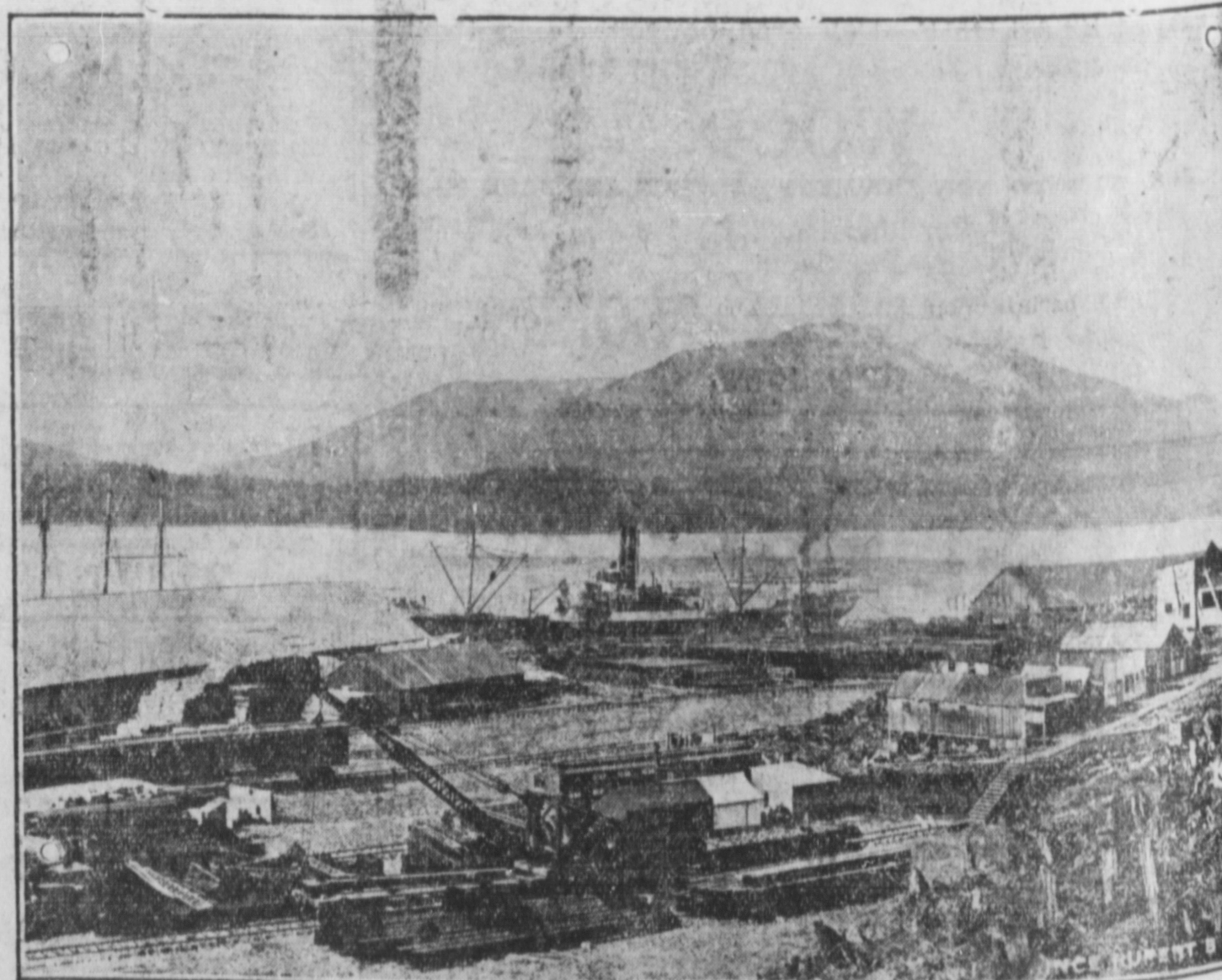
1929
Mayor—S. P. McMordie.
Aldermen—C. H. Orme, F. G. Dawson, S. D. Macdonald, W. M. Brown, Theo Collart, G. W. Rudderham, A. J. Prudhomme and F. Dibb.

1930
Mayor—C. H. Orme.
Aldermen—Theo Collart, P. H. Linzey, J. H. Pillsbury, G. W. Rudderham, James Black, H. F. Pullen, S. D. Macdonald and W. M. Brown.

DAD KNOWS
Young Mathematician—Mum, do you know how to get the cubic contents of a barrel?
His mother—No, ask your father.



AN EARLY DOCK SCENE
Showing portion of incomplete railway grade.



UNLOADING G. T. P. RAILS
which were brought here from Sydney, N.S., via Cape Horn.