

## WATERFRONT WHIFFS

Old Cannery Being Demolished—Deer Hunting Season Over—Light salmon Spawning at Smith's Inlet

Demolition of the old cannery on the local waterfront near Seal Cove is now well under way. The building was originally built as a halibut handling house and was later used as a salmon cannery by the Somerville Cannery Co. Since it was taken over by the B. C. Packers it was not used for canning. Some years ago the machinery was taken out of it.

The grand total of halibut landed at Pacific Coast ports for the 1931 season up to the end of October was 41,270,449 pounds as compared with 46,537,963 pounds for the corresponding period in 1930, according to a bulletin which has just been issued by the United States Bureau of Fisheries. For the month of October this year landings on the entire coast totalled 3,116,170 pounds as against 4,335,870 pounds in the same month last year.

Landings of American vessels on the entire coast for the 1931 season up to the end of October amounted to 33,600,809 pounds as against 38,192,236 pounds in the same period of 1930. American landings for October this year aggregating 2,691,470 pounds as compared with 3,914,270 pounds in October 1930.

Canadian vessels landed 7,469,640 pounds on the coast during the period up to October 31, 1931, which figure compares not badly with the 7,844,835 pounds in the corresponding portion of 1930. For the month of October Canadian landings amounted to 424,700 pounds as compared with 471,900 pounds in October, 1930.

During the month of October, 1931 American vessels landed 1,066,000 pounds of halibut at Prince Rupert as compared with 2,443,000 pounds in the same month last year while Canadian vessels during October this year landed 348,000 pounds in comparison with 440,000 pounds in the same month last year. For the season up to October 31 American landings at this port aggregated 10,097,000 as against 15,677,000 pounds in the corresponding period last year while Canadian landings at Prince Rupert for this season up to the end of Oc-

tober amounted to 6,062,000 pounds as compared with last year's 6,779,000 pounds up to the same date.

Seattle for this year up to the end of October showed a gain in landings, the aggregate figure up to that time for 1931 amounting to 1,522,754 pounds as against 1,051,960 pounds last year. In the month of October halibut landings at Seattle, totalling 14,335,528 showed a substantial increase over 11,293,085 pounds in the 1930 season up to the end of October. In October this year 12,760 pounds of Canadian halibut was landed at Seattle.

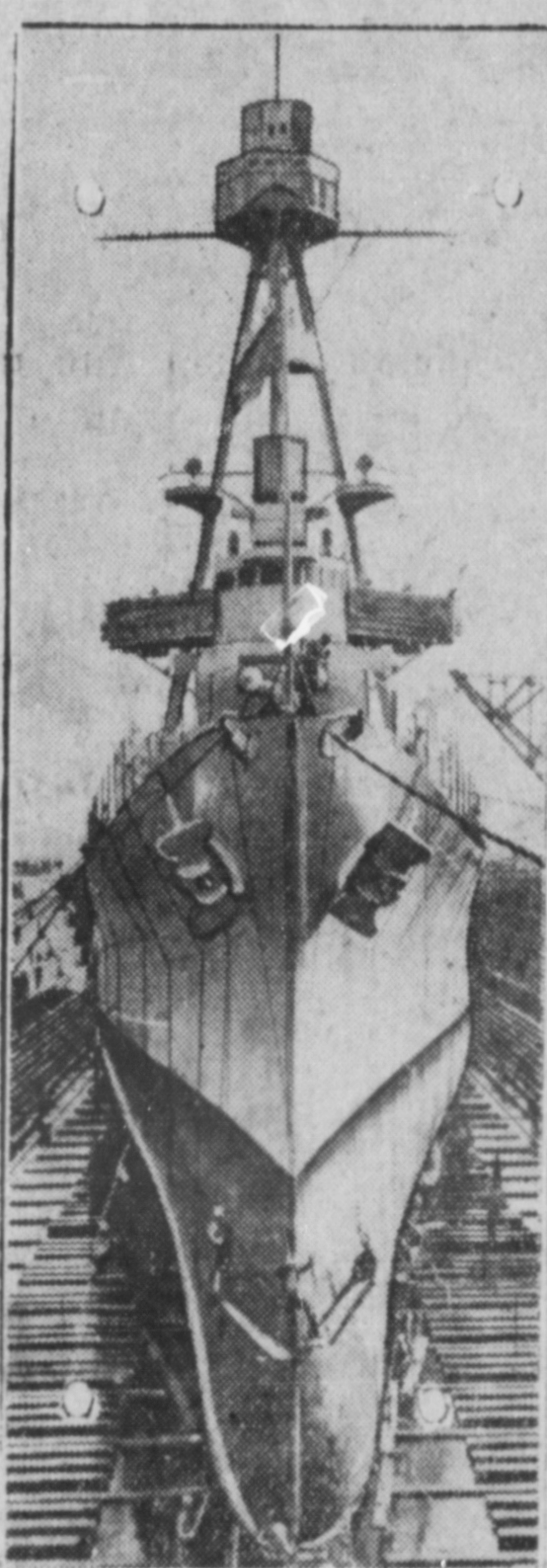
Alaska ports showed a substantial decrease from last year. During October 1931 102,716 pounds of halibut—all American—was landed in Alaska as compared with 376,620 pounds in October last year. For the 1931 season up to the end of October Alaska landings aggregated 9,368,281 pounds as against 11,179,453 in the 1930 season up to the corresponding date.

At Vancouver Canadian landings for this year up to the end of October amounted to 1,243,500 pounds as compared with 1,054,800 pounds last year. There had been no American halibut landed at Vancouver this year whereas last year 42,700 pounds were brought there.

Victoria received but 1,200 pounds of halibut in October this year. Landings for the season there up to the end of October had totalled 151,380 pounds as against 11,025 in 1930 up to the same date.

With the deer hunting season closing this week and little interest being taken in the quest for geese and ducks, turkeys being easier to get and possibly less expensive anyway in the long run, these are dull, quiet days for Sheff Thompson and

## U. S. Cruiser



When a cruiser begins to act queer, they don't stand for any funny work, but just put it in dry dock and look it over. This American cruiser had defective stern posts, a malignant complaint, and is in a Philadelphia dry dock.

The fleet of the Prince Rupert Rowing & Yacht Club which is safely ensconced in winter quarters. Even in deer hunting, there was not the usual activity at the Yacht Club this fall since many of the more important trips were made on big yachts and such craft. Sheff was reminded of the passing of time this week when he saw his name in the Twenty Years Ago column of the Daily News as being the member of an expedition which went to Alyansh to put down an uprising among the Indians there in 1911. Sheff well recalls the winter trip which was a very arduous one.

Reports to the Dominion Depart-

ment of Fisheries have indicated that this season's run of five-year sockeye salmon to the Quashela Creek spawning grounds in the Smith's Inlet area of British Columbia was relatively small, and thereby hangs a tale—a tale of the serious consequences which illegal fishing may have upon future stocks of fish. Here's the story, given in some detail because of its importance in pointing a moral: The life cycle of most sockeye is four years but an important proportion of the fish are five-year salmon whose return to the spawning beds to reproduce their kind is made in their fifth year. Quashela Creek and its expansions made up the sockeye spawning grounds of Smith's Inlet and in 1926 the progeny of the 1921 run of five-year fish were making their way thither to deposit and fertilize their eggs. Fishing is forbidden in Quashela Creek but, through unfortunate mischance, some transient fishermen who went into the Smith's Inlet area in 1926 found and seized an opportunity to violate the prohibition and captured a considerable quantity of salmon in the Quashela waters. What this meant, of course, was that many parent fish, whose escapement was contemplated under the fishery regulations, did not get to the spawning beds, the beds were inadequately seeded, and the number of sockeye hatched out a few months later was reduced.

Came 1931. Their life cycle nearing completion, the five-year sockeye which had begun their existence in Quashela Creek turned there again to spawn.

But there weren't so many of them as there would have been had the illegal fishing not occurred in 1926. Because fish were taken illegally five years ago, the run of 1931 was cut down and there were fewer fish to deposit eggs from which future runs will come.

Put it another way, breach of the regulations by a few men in 1926 has had the effect of lessening, in that particular region, the size of the run of five-year sockeye upon which the salmon fishermen must depend for part of their livelihood. In course of time, careful conservation efforts by the Department of Fisheries may build up the run again but, meanwhile, the fishery suffers.

The incident is worthy of attention by all classes of fishermen all over the country—anglers and commercial fishermen alike. If sufficient parent fish do not get to the spawning grounds, there'll be fewer fish of the next generation to catch, whether game fish or commercial fish. That is certain enough, and what has happened in regard to the five-year sockeye in Smith's Inlet gives the point sharp emphasis. The fisheries regulations framed by the Dominion authorities for observance in the different provinces have as a cardinal purpose the adequate conservation of fishery resources. They are based on experience and on study by scientists and expert observers. The man who disregards them may enlarge his catch today, and "get away with it" if he manages to escape detection, but he will find fewer fish to catch in subsequent seasons.

To many friends, the Waterfront Whiffs again extends the time-honored wish for a Merry Christmas. The great day will be here before we appear again and it is our hope that all have a good time and come through the festivities with flying colors. Even at the worst, we surely have plenty to be thankful for.

Union steamer Cardena, Capt. Andrew Johnstone, arrived in port at 10:30 last night from the south and sailed at 12 midnight on her return to Vancouver and waypoints. The vessel is making a special call at Ocean Falls southbound this trip.

## XMAS TREE LAST NIGHT

Santa Claus Visited Children of First Presbyterian Church Sunday School

Santa Claus paid a visit to the children of the Sunday School of First Presbyterian Church last night, a large number of children as well as interested parents being in attendance. The visit of Father Christmas was preceded by a brief but acceptable program of entertainment. John E. Davey, Sunday School superintendent, was chairman of the concert and the program included piano solo by Miss Frances Thomson; recitation by Miss Ina Robertson; vocal solo by little Miss Molly Frew; recitation by Miss Betty Bremner; violin solo by Miss Winnie Cameron and vocal solos by Miss Lillian Jones.

Books and other prizes were presented to children of the Sunday School who had recorded perfect or regular attendance during the past year. Each child was also presented with a bundle of candles.

The proceedings took place in the church parlors which were attractively decorated for the occasion. The centre of attraction being a richly decorated and lighted tree on the stage.

Owing to snow condition on the lower Skeena River, this morning's rain was an hour late, not arriving until 11:40 a.m.

## Christmas

Christmas time is an eventful time in life for young and old. The grown-ups as well as the children look for good things to eat and make merry. Mussallem's stores are prepared to cater to your needs and have priced everything down to rock bottom

WE HAVE THE FOLLOWING SPECIALS TO OFFER OUR PATRONS FOR THIS WEEK

- Australian Raisins—Seedless, 7 lbs. **\$1.00**
- Cluster Table Raisins—1-lb. box **25c**
- Table Figs—per lb. **20c**
- Fresh Halloweal Dates—3 lbs. for **25c**
- 7 lbs. for **50c**
- Shelled Walnuts—3 lbs. for **\$1.00**
- Mixed Nuts—Fresh arrival per lb. **25c**
- 5 lbs. **\$1.00**
- for **\$1.00**
- Eggs—Storage Extras 3 doz. for **25c**
- Butter—Forestdale and Home Glen, per lb. **25c**
- Gainer's Bacon—per lb. **23c**
- Gainer's Cottage Roll—Boned ham, per lb. **18c**
- Blue Ribbon Tea—A standard for years, 1's, per lb. **45c**
- Blue Ribbon Tea—per 2½-lb. pkg. **\$1.10**
- Canned Raspberries—2's per tin **25c**
- Pineapple Pure Marmalade 4-lb. tins **60c**
- Robertson's Imported Marmalade, per 4-lb. tin **60c**
- Peas—No. 3 Sieve, good and tender, 3 tins for **40c**
- Aylmer Spinach—2 2½-lb. tins **35c**
- Heinz Tomato Catsup—2 large bottles **45c**
- Campbell's Tomato Soup—3 tins for **25c**

- EXTRA SPECIAL
- Chocolate Bars—Reg. 5c seller, 8 bars for **25c**
  - 24 Bars in a box going at per box **75c**
  - Good Christmas Mixed Candy, per lb. **18c**
  - Peek-Fran Imported Biscuits—All assortments **40c & 50c** per lb.

Our Fruits and Vegetables Are Always Fresh

## Mussallem's Cash & Carry Stores

"Where Dollars Have More Cents"  
No. 1 Store Fifth Ave.—Phone 18-84  
No. 2 Store 319 Third Av.—Phone 360  
No. 3 Store 727 Third Av.—Phone 375

Friday and Saturday TWO SHOWS — 7 and 9 p.m.  
ADMISSION — 20c & 65c  
Feature Starts at 7:18 & 9:19  
Sat. Matinee at 2:30—15c, 40c  
Feature Starts at 2:48

WARNER BAXTER in  
**"THE SQUAW MAN"**  
With Lupe Velez, Eleanor Boardman, Roland Young. An all star cast. For the sake of the woman he loved—he took the shame of his enemy.  
Comedy—"ONE HUNDRED PER CENT SERVICE"  
Cartoon—"THE CAT'S NIGHTMARE"  
MONDAY & TUESDAY—"EAST OF BORNEO"  
BENEFIT MATINEE TUESDAY AT 2:30

**Practical Presents**  
Carving Sets—Flash Lights—  
Aluminum Ware—Pocket Knives—  
Pyrex Ovenware—Copper Kettles—  
Mechanics' Tools—Seamless Roasters—  
SEE OUR WINDOWS  
**Thompson Hardware Co. Ltd.**  
255 Third Ave. Telephone 101

**BUY B. C. PRODUCTS**  
And help our own farmers—ASK FOR  
**Fraser Valley Butter and Cheese**  
100% B.C.; ALWAYS FRESH; ARRIVING 3 TIMES WEEKLY;  
AWARDED 13 CHAMPIONSHIPS.  
S. C. THOMSON—Wholesale Distributor For  
**Fraser Valley Milk Producers Asso.**

**Hard Time Prices For Cash**  
No. 1 Alberta Lump . . . . . **\$12.50**  
No. 1 Alberta Egg . . . . . **\$11.50**  
Pembina Peerless Lump . . . . . **\$12.00**  
Pembina Peerless Egg . . . . . **\$11.50**  
**HYDE TRANSFER—PHONE 580**

The Fish which made Prince Rupert Famous  
**"Rupert Brand" SMOKED BLACK COD**  
Prepared Daily By  
**Canadian Fish & Cold Storage Co., Ltd.**  
PRINCE RUPERT, B.C.

**FOR YOUR CONVENIENCE**  
We maintain a day and night service. Our garage is open from 8 a.m. to 1 a.m.  
You will like our service. Please try it.  
**KAIEN MOTORS LTD.**  
Telephone 52

Cut Down Prices on **STOVE WOOD**  
12, 14 or 16-inch length  
DRY SPRUCE and CEDAR  
GREEN HEMLOCK, ALDER and JACKPINE  
Cedar Pillings and Radio Poles  
**N. Carlson & J. Flostrand**  
Telephone—Green 556

**COAL**  
Buy the real Coal—our famous Edson and Cassidy-Wellington—in any quantities.  
Also Bulkley Valley Hay, Grain and Robin Hood Flour.  
**Prince Kupert Feed Co**  
PHONES 58 AND 558

**TELEPHONE 657**  
VALENTIN DAIRY FOR SKEENA BRAND  
**Creamery Butter & Cottage Cheese**  
FRESH PASTEURIZED MILK AND CREAM DAILY  
Early Delivery Throughout the City

## Our Down-Stairs Store

**FOUR BARGAIN TABLES OF STAPLE GIFTS**  
25c, 50c, 75c and \$1.00

Also a wonderful range of Dinnerware, Tea Sets, Fancy China, Cups and Saucers, Cut Glass, Genuine Crystal and Glassware for every day use.

GENUINE INDIAN MOCCASINS AND CURIOS

Brassware From India and China	Aeropacks, Suit Cases & Club Bags	Floor Lamps and Fancy Table Lamps
--------------------------------------	---	---

### Sterling Silver & Hollow Ware

Reduced prices on Community Plate and extra special value in our new Monterey Pattern. Don't overlook this wonderful value. Carving Sets.

Pipes, Cigarette and Cigar Holders, Cigarette and Cigar Cases. Bargain prices on Ladies' Hand Bags and Umbrellas. Also Ivory, Pearl-Tone and Sterling Toilet Ware.

There is a Thrill in Giving and Receiving the Best that Money Can Buy in Any Gift

**Hamilton, Waltham and Elgin Watches**

For Ladies and Gents, are the finest and most reliable time-keepers made. All kinds of Clocks, including the New Electric.



**Sheaffer and Waterman Pens and Pencils**

Your name counter-sunk in 22-K Gold free on any Pen or Pencil over \$2.00.

We cordially invite you to come in and inspect our store. Friendly service. No obligation to buy.

STORE OPEN EVENINGS

**MAX HEILBRONER** Diamond Specialist  
Third Avenue

## BOAT ENGINES

10 to 60 H.P. — From **\$8.50**

Also Generators from **\$5.50**

and Guaranteed New Storage Batteries from \$7.95

**VANCOUVER AUTO WRECKING CO.**

1249 Granville St., Vancouver  
Branch Yard at 330 Second Ave. East