

TITE'S

STORE

Clearing Decks

FOR CHRISTMAS BUSINESS

FIRST COME BEST SERVED

Fancy Goods, Toys, Chinaware, Draperies, Eiderdown Comforters, Easy Chairs, Rockers, Buffets, Dining Tables and Chairs, Dressers, Chiffoniers.

Community Plate Silverware---

THREE BEAUTIFUL DESIGNS—ADAM, PATRICIAN and SHERATON—The Gift de Luxe—Solid or Hollow Handle Knives, Spoons, Forks, Berry and Salad Spoons, Sugar Tongs, Butter Knives, Baby Spoons, Meat and Fish Forks. Also Leather and Mahogany Cases filled to suit your price.

A Useful Gift---

Axminster Carpet Square Tapestry or Brussels. Special Discount Price for Xmas.

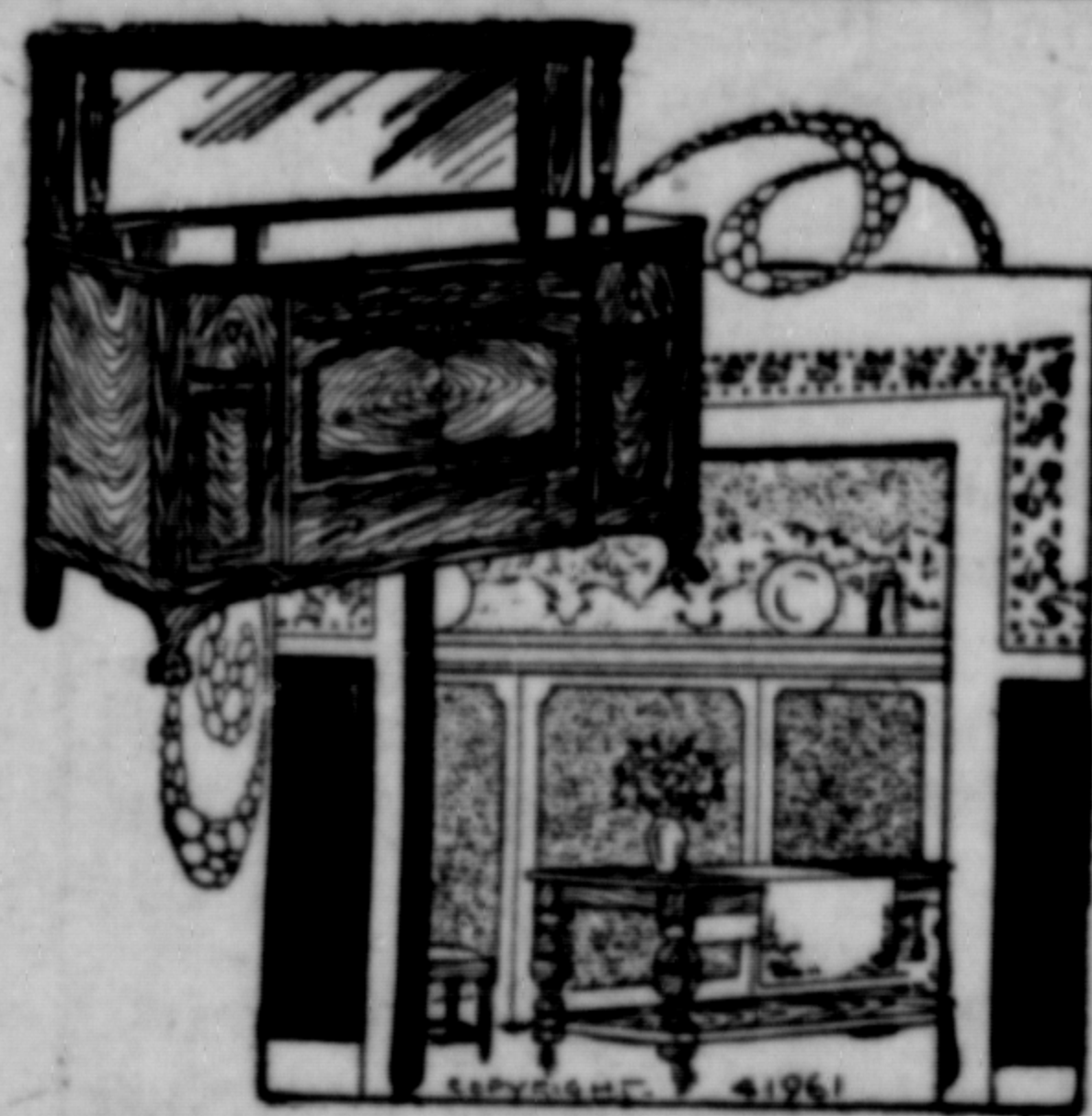


FOR YOUR BEDROOM
Furniture in one of the period styles would be particularly pleasing and always in good taste. Call and see our large stock of **HIGH-CLASS FURNITURE**

Good Furniture

The **GIFT**
Most Appreciated
Useful and
Comfortable

**TITE'S SPECIAL
'Xmas Discounts.**



FOR THE DINING ROOM
or Library substantial articles mean comfort and lifelong service if you select

OUR FURNITURE

SPECIAL DISCOUNTS FOR 'XMAS ON ALL FURNITURE



YOUR FAVORITE CORNER—
Is it furnished as you would like it? Have you a convenient case for your books, a chair that gives you rest and comfort and everything else in the line of the **RIGHT FURNITURE?**

TOYS

for the
CHILDREN

Trains, Books, Dolls, Animals, Games, Balls, Tanks, Pistols, Wagons, Sleighs, in fact, see everything in Toyland at our store.



YOUR LITTLE GIRL—
the one you delight in pleasing—whether or not she belongs to you, will just love a dolly that you give her. So bring her here and let her choose.

THE DOLL SHE WANTS



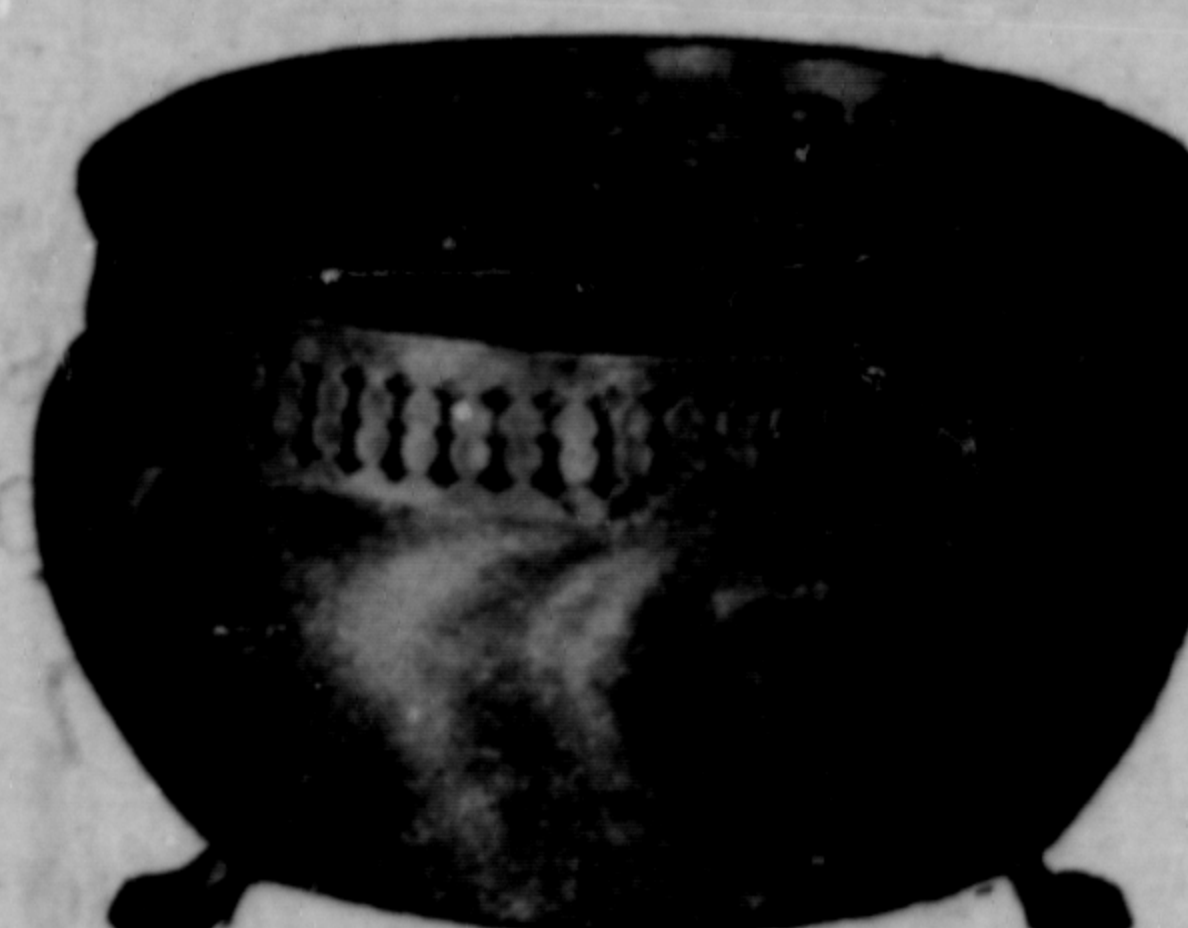
Fancy Jewel Case, Mesh Chain Bags, Ladies' Vanity Purses and Satchels.

Fancy China

Royal Dalton, Derby, Ainsley, Wedgewood, and hand painted Japanese.

Cut Glass

Berry Bowls, Nappies Bon Bon, Water Sets, Creams, and Sugars. At Special discount prices for Xmas.



Fern Bowls, Brass Jardenieres, Smoker Stands, Fancy Baskets, Ladies' Handkerchiefs and note paper in fancy boxes.

TITE'S XMAS DRAWING

Every \$2.00 Cash Purchase entitles you to Ticket Free for—
1ST. PRIZE.—Brass Bed, Spring, Mattress and Pair Pillows.
2ND. PRIZE.—Ladies' Desk and Chair, Mahogany.
3RD. PRIZE.—Large Kewpie Doll.

Do your Shopping in the Morning—it helps YOU to receive our best attention. Our Store is complete with Santa Gifts for Father, Mother, Sister or Brother.

STORE OPEN EVERY NIGHT until Xmas

GEO. D. TITE
:- Complete Home Furnisher :-

Local News Notes

Launch "Alice B." Phone 41.
Perrin's Kid Gloves.—Wallace's
Tickets for prizes—every \$1.00 purchase, Wallace's. tf
Mrs. H. Nichol arrived from Alice Arm last night.
No waiting in shoe repairing at McArthur's Shoe Store. tf
Metal Trades Unit O. B. U. meets tonight 8 o'clock.
"The Scarlet Pimpernel." Some story. Westholme tonight.
Pianos correctly tuned. \$6.00, G. C. Walker. Phone Blue 389. tf
Don M. Peck returned to his home in Vancouver last night.
Use "Muresco" the great sanitary wall finish. A. W. Edge Co.
H. F. Kergin is in town, having arrived from Alice Arm last night.
COMMUNITY PLATE. The gift de luxe, at eastern prices, at Tite's. tf
New shoes are expensive. Have your old ones rebuilt at McArthur's. tf
Miss Christopherson left for Vancouver on the Prince George last night.

Tite's large stock of fancy goods and toys opened up and at your service. tf

We don't cobble shoes at Simpson's—we repair them. Corner Fifth and McBride. tf

"The Scarlet Pimpernel," the great tale of the French Revolution.—Westholme tonight.

Rustic baskets, poinsettia, primula, Cyclamen in pots, to arrive tomorrow. Arctic Studio.

20 per cent discount on all wall-papers. We have to make room for new stock. A. W. Edge Co. tf

Tite's special discounts for cash until Christmas in our furniture, rug and drapery departments. tf

Remember the sale of Xmas wreaths and tiny Xmas trees at the Presbyterian Church Hall on Saturday afternoon.

Would William Deegan, late of Oraki, Southland, New Zealand, please communicate with brother, Upper Nevis, Otago, New Zealand.

Chamois Gloves—Heavy weight—Wallace's. 296

"Byron the Poet, His Life and Times," is the subject on which Principal Brady will address the St. Andrew's Society tonight. A good musical program has been arranged and all members of the society and the Ladies' Auxiliary are invited. tf

Ladies' wash kid gloves. Wallace's. 296

T. Taylor, general superintendent; Major C. B. North, mine superintendent, and R. K. Kirkup, of the official staff at the Dolly Yagden Mine, were passengers southbound on the Prince George last night. They will spend the holiday season in the south, returning early in the new year.

Reductions on boxed hankies.—Wallace's. 296

Ed. A. Leighton, the practical boatbuilder of Metlakatla, has under construction at that place a 29-foot gasoline hull, of the compromise stern, raised deck type, with pilot house—the model so extensively used by progressive salmon trollers nowadays. The hull, when completed, will be turned over to Roy Russ, of Port Simpson for salmon trolling purposes. Ed. Leighton is one of the pioneers among salmon trollers operating out of this port. 97

The "Director" Corset. Manufactured in Prince Rupert. Phone Blue 92. tf

1st, 2nd and 3rd Prizes—Xmas Drawing—Wallace's. tf

TOO LATE TO CLASSIFY
A SNAP—Fifteen H. P. 4-cycle engine and equipment in first class shape, for sale. \$800.00. Can be seen at Parkin & Ward Electrical Co., Cow Bay. tf
FOR RENT—Five-roomed house with bath, furnished. Newly decorated. Close in. Phone 195.

COME IN!

and Look over
... our ...

GOODS FOR CHRISTMAS

They are of the very
best quality and the
prices are very reasonable.

Ormes, Limited

Two Phones 82 & 200 At Your Service

WESTHOLME THEATRE

TONIGHT

DUSTIN FARNUM

—IN—

"The Scarlet Pimpernel"

From the famous novel by Baroness Orczy

TWO REEL COMEDY
"CACTUS NELL"

There will be **NO SHOW** at the EMPRESS tonight. The SIXTH EPISODE of "THE CARTER CASE" will be shown TOMORROW, SATURDAY NIGHT, only. Starting next week, the two serials will be shown on Fridays and Saturdays only.

Spirella Corsetiere. Phone Black 257.

For plate and sheet glass, see A. W. Edge Co. tf

For first class shoe repairing, B. M. Simpson, Fifth and McBride.

When you need a pair of shoes of better grade, call at McArthur's Shoe Store. tf

Morley Shier left for Vancouver last night, where he will spend the Christmas season.

For the home fireside; the comfort of an easy chair and rocker. Tite's store for holiday discounts. tf

New assortment of Waterman's fountain pens, gold mounted and plain, just arrived at Bulger's Jewellery Store. 297

Teachers leaving for the south on the Prince George last night to spend the holidays in the southern cities included Misses Gowan, O'Hearn and McLenaghan.

Tite's Christmas Drawing. Every \$2.00 cash purchase entitles you free to a ticket. First prize, brass bed, coil springs felt mattress and pair of down pillows. Second prize, ladies' desk and chair, mahogany finish. Third prize 24-inch Kewpie Doll. tf

DENTISTRY

Don't neglect your Teeth
One decayed or missing tooth lowers your efficiency

DR. BAYNE

Office Hours—Morning, 9 to 12; Afternoon, 1.30 to 5.30; Saturday, 9 to 12 only. Evenings, Tuesday, Wednesday and Friday, from 7 to 9.

DENTAL NURSE IN ATTENDANCE
PHONE 109 FOR APPOINTMENT

Cadomin Coal

No wait. Full weight.

\$12.50 \$13.75
Ton, Loose Ton, Sacked

Consumers Coal Company
Phones—Black 51, Black 293

Chilli Con Carne & Hot Tomatoes

At the
CHILLI PARLOR - 835 Second Avenue
Delivery Service Extra Phone 557

Georgetown Lumber Co.

PHONES 130 and 423.

P. O. BOX 1632

Largest Assortment of Lumber in Central B. C.
FISH BOXES A SPECIALTY

SPRUCE FIR CEDAR
Cor 3ult Us.

THEO COLLART, Notary Public

FOR SALE—Lots 19 and 20, Block 18, Section 1, Third Avenue near McBride—**\$3,500 Each**
A REAL SNAP.

MARINE INSURANCE REAL ESTATE FIRE INSURANCE
Phone Blue 69 Westholme Theatre Block P. O. Box 66