

Something New!

Ginger Fruit Toffee, 39c lb.
 Filbert Nut Clusters, 49c lb.

SHAVING CREAM

— and —
AFTER SHAVE LOTION
 Special at 50c

SNAPSHOT ALBUMS

From 60c and up

Ormes Ltd.

The Pioneer Druggists

The Rexall Store Phones: 81 & 82

LOCAL NEWS NOTES

Silversides Bros. for Wallpaper, Glass, Paint and Mureco.

Get the best radio reception possible with Westinghouse tubes. See them tested and labeled at McRae Bros.

Taxpayers please note that Tuesday, August 1st, 1933, is the last day for the payment of General Taxes to avoid penalty. 177

G. W. Laidler, local manager of W. H. Malkin Co. Ltd., returned to the city on the Prince John this morning after making the round trip to Stewart on company business.

Mr. and Mrs. W. L. Stamford and family of Digby Island, who have been holidaying in Vancouver and Victoria, returned to the city from the south on the Prince George this morning.

Miss Evelyn Fairbairn, who has been paying a brief visit to the city since her return to Queen Charlotte City.

Miss Margaret Beattie sails this evening on the Prince John for Queen Charlotte City where she will pay a visit with her father, George D. Beattie.

Miss Irene Mitchell and her guest Miss Jean Hood, of Vancouver and Miss Jean Grieve left this morning for a visit of a few days to Carlisle, where they will be guests of Mr. and Mrs. A. D. Matheson.

Indian Agent and Mrs. James Gillett and family of Massett, who have been on a trip to Vancouver, arrived in the city from the south on the Prince George this morning and will proceed to the Islands on the Prince John tonight.

J. J. Payne of Fraser & Payne, who has been on a combined business and pleasure trip to Vancouver and elsewhere in the south, returned to the city on the Prince George this morning. Mrs. Payne and family are remaining in the south for a while longer.

W. M. Blackstock, local manager of the Canadian Bank of Commerce, returned to the city on last night's train from Medicine Hat, Alta., where he has been paying a visit with his mother. Returning to the city, he made a brief stop-over at Vanderhoof where he formerly was located.

With a fair-sized list of passengers, C.N.R. steamer Prince George, Capt. H. E. Nedden, arrived in port on time at 11:30 this morning from Vancouver, Powell River and Ocean Falls and sails at 3 o'clock this afternoon for Anyox and Stewart whence she will return here tomorrow evening southbound.

Traffic conditions in Chicago as a result of visitors to the World's Fair are reported to be terrific and suggestions are now being made that visitors to the great exposition would be well advised to leave their cars at home and travel by train. Congestion in the streets of the Windy City is reported to be beyond belief. There are literally thousands of cars from all over the United States and free parking anywhere within the limits of the city is practically impossible. It has been necessary to hold up cars twelve and fourteen miles out of the city.

Announcements

Eagles' picnic, Grassy Bay, July 30.
 Catholic Bazaar October 19.
 Presbyterian Fall Bazaar Nov. 9.
 Anglican W. A. Bazaar, Nov. 16.

CITY Transfer

Phone 950

Hemlock and Spruce—
 per cord, delivered \$6
COAL FOR SALE
 Furniture and Piano Moving

For day and night Taxi service Phone 32. 11

Miss Eileen Patmore is leaving on this evening's train for North Bulkley where she will spend a holiday visiting with friends at the Pioneer Ranch.

Come with the crowd on Sunday to the EAGLES' PICNIC at Grassy Bay. Cars leave Eagle Hall, Sixth Ave. and McBride Street, and Ridley Home, 10 a.m. to 1 p.m. Fun, Sports, Prizes, Doy' Band in attendance. Tea, Coffee, Milk and Sugar free. Adults 50 cents, children free. 176

Father E. M. Leray O.M.I., well known and popular district priest of the Roman Catholic Church, has accepted an invitation to address the Prince Rupert Gyro Club at its regular weekly luncheon next Tuesday. He will speak on some of his experiences in France during the Great War in which he served in the ranks of the French army.

for **SPRAINS**
 Rub Minard's in gently. It penetrates sore ligaments, allays inflammation, soothes, heals.
MINARD'S "KING OF PAIN" LINIMENT
 Puts you on your feet!

For drunkenness, W. A. Matheson was fined \$25, with option of fourteen days' imprisonment, in city police court by Magistrate McClymont yesterday. Arthur Hines was fined \$5, with four days' option, on charge of stealing a ride on the Canadian National Railways.

Mrs. F. G. Dawson and family and Miss Jessie Rothwell who left here several weeks ago with the intention of making a leisurely motor tour through the country, eventually reaching California, have become enamoured of Crescent Beach at Summerland on Okanagan Lake. They are planning to spend several weeks there.

Hotel Arrivals

Royal
 Joe Stein, Vancouver.
 Howard Bull and J. Lorenzen, Sidney.
Central
 William Jones and Mrs. J. Hughes, city.
Prince Rupert
 F. R. Wilson, Inverness; G. A. Donnelly, G. S. Welterdonald and Pat McIlroy, Vancouver; W. Johnstone, Edmonton; E. L. Perrin, city; Father P. Champagne, Terrace.

Jones' Family

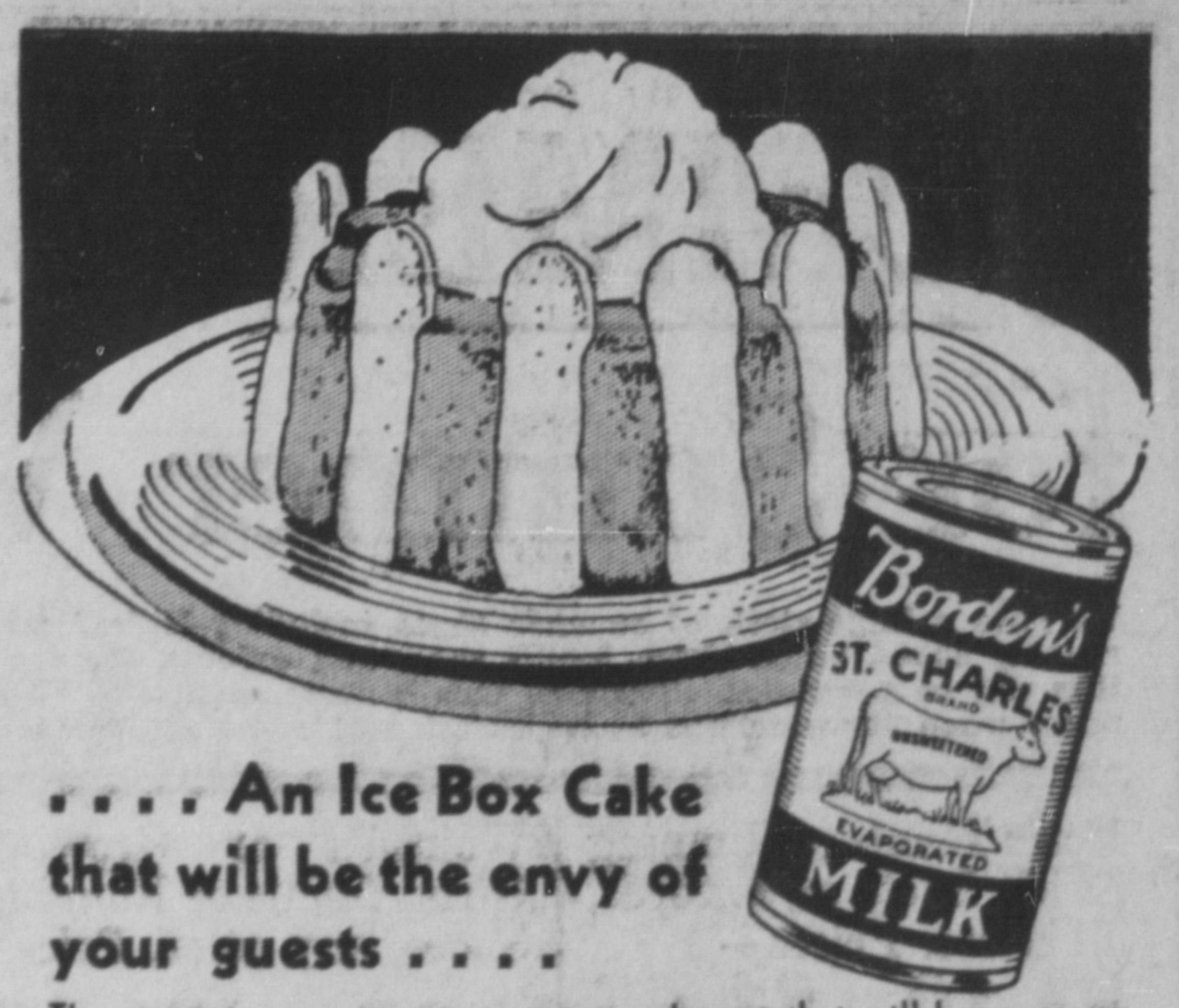
MEAT MARKET

| | |
|----------------------------------|-----|
| Loin Veal Chops— 2 lbs. | 35c |
| Rump Roast Veal— per lb. | 15c |
| Shoulder Veal— 4 lbs. | 50c |
| Stewing Veal, 2 lbs. | 25c |
| 1 bunch Carrots | 20c |
| Rolled Shoulder Lamb— per lb. | 20c |
| Stewing Lamb, 2 lbs. | 25c |
| 1 bunch Carrots | 25c |
| Pork Chops— 2 lbs. | 35c |
| Shoulder Roast Pork— 4 lbs. | 50c |
| Boiling Beef— 3 lbs. | 25c |
| Sirloin Tip— per lb. | 18c |
| Sirloin Steak— 2 lbs. | 45c |
| Leg Pork— per lb. | 18c |
| Prime Rib Roll— per lb. | 18c |
| Tomato Sausage— per lb. | 10c |

The Markets

Retail prices current here at present are as follows:

| Vegetables | |
|--|--------|
| New Potatoes, B.C., 8 lbs. | 25 |
| Beets, bunch | 06 |
| Parsley, bunch | 07 |
| Turnips, 8 lbs. bunch | 25 |
| Carrots, B.C., bunch | 06 |
| Cucumbers, each | 15 |
| Sweet Potatoes, lb. | 10 |
| Hothouse Tomatoes, No. 1, lb. No. 2, lb. | 22 |
| B.C. Cauliflower, lb., 5c to | 35 |
| New Zealand Onions, lb. | 05 |
| Green Onions, bunch | 03 |
| Bermuda Onions, lb. | 10 |
| Green Beans, lb. | 25 |
| Asparagus, B.C., lb. | 20 |
| Garlic, imported, per lb. | 35 |
| Cal. Cabbage, lb. | 10 |
| B. C. new, lb. | 09 |
| B. C. Head Lettuce, 5c to | 08 |
| Spinach, B.C. | 06 |
| Green Peas, B.C., lb. | 10 |
| Radishes, bunch | 03 |
| Vegetable Marrows, each | 10 |
| Apples | |
| Winesaps, fancy, lb. | 10 |
| Fruits | |
| Valencia Oranges, doz. 20c to | 55 |
| Lemons, Cal., 20c to | 40 |
| Grapefruit, Calif., 5c to | 10 |
| Grapefruit, Florida, 12½c to | 20 |
| Rhubarb, outdoor, 6 lbs. | 25 |
| Plums, 2 lbs. | 25 |
| Strawberries, B.C., basket crate | 2.25 |
| Bananas, lb. | 15 |
| Cal. Cherries, lb. | 30 |
| Watermelon, lb. | 10 |
| Cantaloupes, 15c to | 25 |
| Watermelon, lb. | 10 |
| Dried Fruits | |
| White Figs, lb. | 12½ |
| Black Cooking Figs, lb. | 10 |
| Dates, bulk, lb. | 8c to |
| Lemon and Orange Peel | 20 |
| Citron Peel | 30 |
| Prunes, 30-40, lb. | 15 |
| Prunes, 40-50, lb. | 12 |
| Prunes, 60-70, lb. | 10 |
| Raisins, Australian seedless, lb. | 15 |
| Raisins, Cal., seedless, lb. | 13 |
| Currants, lb. | 15 |
| Apricots, lb. | 15c to |
| Apples, dried | 14c to |
| Peaches, peeled | 12c to |
| Flour | |
| Flour, 49's, No. 1 hard wheat | 1.85 |
| Second Patent | 1.70 |
| Pastry Flour, 10 lbs. 45c to | 50 |
| Aust. Pastry Flour, 10 lbs. | 35 |
| Eggs | |
| B.C. Fresh Extras, cartoned | 30 |
| Local new laid, doz. | 35 |
| Butter | |
| Fancy, cartoned, lb. | 32 |
| Na. 1 Creamery, 3 lbs. | 82 |
| Honey | |
| Extracted Honey, per jar 20c to | 30 |
| Comb Honey | 35 |
| Cheese | |
| Ontario solids, new, lb. | 25 |
| Ontario, mature, lb. | 35 |
| Stilton, lb. | 35 |
| Edam, lb. | 45 |
| Roquefort, lb. | 90 |
| Gorgonzola, lb. | 80 |
| Sugar | |
| White, 100 lbs. | 7.55 |
| Yellow, 100 lbs. | 7.05 |
| Lard | |
| Pure, lb. | 17 |
| Meats | |
| Fowl, No. 1, lb. | 25 |
| Roasting Chicken, lb. | 28 |
| Ham, sliced, first grade | 35 |
| Ham, picnic, first grade, lb. | 18 |
| Bacon, side, sliced, best grade | 33 |
| Pork, shoulder, lb. | 15 |
| Pork, loin, lb. | 22 |
| Pork, leg, lb. | 22 |
| Pork, dry salt, lb. | 20 |
| Veal, loin, lb. | 22 |
| Veal, shoulder, lb. | 15 |
| Beef, pot roast, lb. 13c to | 15 |
| Beef, boiling, lb. | 12½ |
| Beef, roast, prime rib, lb. | 20 |
| Beef, steak, lb. 20c to | 30 |
| Lamb, shoulder, lb. | 22 |
| Lamb, leg, lb. | 35 |
| Lamp Chops. | 33 |
| Fish | |
| Smoked Kippers, lb. | 15 |
| Salmon, fresh, lb. | 20 |
| Hallbut, 2 lbs. | 25 |
| Nuts | |
| Almonds, shelled Valencia | 50 |
| California soft shelled Walnuts | 35 |
| Walnuts, broken shelled | 35 |
| Peanuts | 15 |
| Walnuts, shelled halves | 45 |
| Feed | |
| Wheat, Alberta | 2.25 |
| Bran | 1.55 |
| Shorts | 1.60 |
| Middlings | 1.90 |
| Oats | 1.85 |
| Fine Oat Chops | 1.95 |
| Fine Oat Chops | 1.85 |
| Crushed Oats | 1.95 |
| Barley | 1.85 |
| Barley Chop | 1.95 |
| Laying Mash | 2.55 |
| Oyster Shell | 1.30 |
| Beef Scrap | 2.25 |



An Ice Box Cake that will be the envy of your guests . . .

The next time you want to serve a dessert that will be a success with everybody try this recipe for Chocolate Ice Box Cake.

3 squares unsweetened chocolate, broken in small pieces
 ¼ cup granulated sugar
 ¼ cup boiling water
 1 cup St. Charles Milk
 5 egg yolks

Put the chocolate and granulated sugar into top of double boiler, add boiling water, let stand over hot water until chocolate is melted. Bring the St. Charles Milk to scalding point and blend with the chocolate mixture. Add the egg yolks, one at a time, beating well after each yolk is added. Cook until the mixture is smooth and thick. Cool. Cream the butter and beat in the confectioners' sugar gradually. Stir into the chocolate mixture, add vanilla and fold in the stiffly beaten egg whites. Line the sides and bottom of a spring cake mold with the lady fingers. Cover the bottom layer with half the chocolate filling, add another layer of lady fingers, cover with the remainder of the chocolate filling, put in the ice box and let stand overnight. Unmold and serve with a garnish of whipped cream.

This is only one of over a hundred delightful recipes contained in "The Good Provider" Cook Book. Send your name and address to The Borden Co. Limited, 50 Powell St., Vancouver, and a copy will be mailed to you. 619

Borden's ST. CHARLES UNSWEETENED EVAPORATED MILK

Classified Ads

FOR SALE

FOR SALE good office safe. Can be seen at Daily News. 11

1930 Plymouth Coupe, condition like new, will sell at a real sacrifice in price. WALKER'S MUSIC STORE.

FOR RENT

HOUSES—F. W. Hart. 11

NEWLY Renovated modern flat. Rand Block, Max Heilbronner. 11

GOOD Location for small business in centre of the new business district, Third Avenue. Will renovate to suit tenant. Rent only \$20 a month. McClymont. 11

HAIRDRESSER

PERMANENT WAVING!
 "OH" \$3.50. "Ringlette" \$5.00.
 Nelson's Beauty Shoppe

TRANSFERS

CAMERON'S TRANSFER—Furniture moving, wood, coal, chairs for rent. 11

PAINTERS

AINTING and Paperhanging
 Moller, Phone Red 802.

CLEANING & PRESSING

PRICES reasonable Benkendorf, Third Ave., next door to Daily News.

PRINTING

Office Supplies
 Rose, Cowan & Latta
 Phone 234

COAL! COAL!

Our Famous Edson, Alberta and Bulkley Valley Coals are guaranteed to give satisfaction. Try a ton of No. 1 Bulkley Valley. We also sell Timothy Hay, Wheat Oats and Barley.
 Prince Rupert Feed Co.
 58 — Phones — 558

The AUCTIONEER

Packing—Crating—Wrapping & General Furniture Repairs

List your goods with me
 GEO. J. DAWES
 Phone—Black 120

QUEEN CHARLOTTE ISLANDS SHINGLES

The Best Made
 No. 1 5x, per thousand \$4.35
 No. 1 3x, per thousand \$3.85
 Green Shingles, Air Dried Retaining All the Cedar Oil
HYDE TRANSFER—PHONE 580

If you lose anything, try a classified ad.

Saturday Specials

Phone 62 Phone 63

| TO FRY | TO ROAST | TO STEW |
|-------------------------------|---|--|
| LAMB CHOPS, lb. 18c | SHOULDER BEEF, lb. 10c | VEAL lb. 10c |
| PORK TENDERS, lb. 25c | SHOULDER LAMB, lb. 14c | LAMB lb. 10c |
| BEEF TENDERS, lb. 27c | SHOULDER VEAL, lb. 12½c | BEEF lb. 10c |
| LARD 2 lbs. 25c | BOSTON BUTT, lb. 15c | BOILING FOWL per lb. 22c |
| CALF LIVER per lb. 25c | BRISKET BEEF, lb. 6c | |
| Cello Wrapt BACON per lb. 18c | STERLING COMET SPECIAL TEA per lb. 35c. | STERLING BUTTER 2 lbs. 49c |
| | | FLETCHER'S Honey Baked HAM per lb. 40c |

The Fish which made Prince Rupert Famous

"Rupert Brand" SMOKED BLACK COD

Prepared Daily By
Canadian Fish & Cold Storage Co., Ltd.
 PRINCE RUPERT, B.C.

UNION STEAMSHIPS LIMITED
 Steamers leave Prince Rupert for Vancouver:
 T.S.S. CATALA EVERY TUESDAY, 1:30 P.M.
 Due Vancouver Thursday p.m.
 T.S.S. CARDENA EVERY FRIDAY MIDNIGHT.
 Due Vancouver Monday a.m.
 Weekly sailings to Port Simpson, Alice Arm, Anyox, Stewart and Nasas
 Further information regarding all sailings and tickets at —
 Prince Rupert Agency: Second Avenue. Phone 568