

Classified Ads

FOR SALE

TWO Show Cases and one Counter, Rose Cowan & Latta, Phone 234-112

NEW trolling boat 8 1/2 feet x 31 feet. For particulars phone Red 730.

FOR SALE—4-room house, fully modern, with garage, Graham Avenue. Easy payments. Apply Collart & McCaffery Ltd. 112

FOR SALE—Very late Model T Ford Truck, excellent condition, good tires, cab, Atwater Kent ignition, \$150.00. E. DIX, Terrace, B.C.

FOR SALE, Rent or Lease, Kitsumgallum Lake Lodge with Dance Pavilion, and Annex Lots of Fruit and Berries. The price is right. E. DIX, Terrace, B.C.

FOR SALE—Cabin Cruiser Boat, round bottom type, length 31 ft., 7 ft. 6 in. beam, 12 h.p. Vivian engine (medium duty); boat and engine like new; a Snap at \$450. E. DIX, Terrace, B.C.

FOR RENT

HOUSES to rent, Hart.

FOR RENT—Furnished cabin, partly modern, suitable for couple. For sale—enamel refrigerator. Apply before 7 p.m. D. E. Murphy, 241 Fifth Ave. West.

LAND ACT

Notice of Intention to apply to Lease Land in Prince Rupert Land Recording District of Prince Rupert, B.C., and situate in Glawdest Bay located at the N.W. end of Stephens Island, Range 5, Coast District. Take notice that John Clausen of Prince Rupert, B.C., occupation Fish Packer, intends to apply for a lease of the following described lands: Commencing at a post planted at the S.W. corner of a small island about 8 chains S.E. of Avery Island thence N.E. thence westerly southerly and easterly, following high water mark to point of commencement and containing 2 acres more or less, and including the entire area of the said island.

JOHN CLAUSEN, Dated April 16, 1934.

NOTICE OF APPLICATION FOR CERTIFICATE OF IMPROVEMENTS

Gold Cliff No. 3 Fractional Mineral Claim. Margaret Mineral Claim. Gold Cliff No. 6 Mineral Claim. Margaret Mineral Claim. Gold Cliff Fractional Mineral Claim. Situate in the Portland Canal Mining Division. Where located—on the west side of Bear River about three miles from Stewart, B.C. Lawful Owner—William Dann. Number of the holder's free miner's certificate—77720-D. TAKE NOTICE that William Dann, Free Miner's Certificate No. 77720-D, intends, at the end of sixty days from the date hereof to apply to the Mining Recorder for a certificate of improvement for the purpose of obtaining a Crown Grant of the above claims. AND FURTHER TAKE NOTICE that, under Section 85 of the "Mineral Act" must be commenced before the issuance of such certificate of improvements. DATED this 23rd day of March, 1934. W. DANN

TRANSFERS

GARDEN Soil \$2.50 a load; 35c per sack. Cameron's Transfer, Phone 177.

HAIRDRESSER

PERMANENT WAVING: Cluster Curl; Latest Styles. NELSON'S BEAUTY SHOPPE

PAINTERS

PAINTING and Paperhanging. Moller, Phone Red 802.

LAND ACT

Notice of Intention to apply to Lease Land in Prince Rupert Land Recording District of Prince Rupert, B.C., and situate in Glawdest Bay located at the N.W. end of Stephens Island, Range 5, Coast District. Take notice that John Clausen of Prince Rupert, B.C., occupation Fish Packer, intends to apply for a lease of the following described lands: Commencing at a post planted at the S.W. corner of a small island about 8 chains S.E. of Avery Island thence N.E. thence westerly southerly and easterly, following high water mark to point of commencement and containing 2 acres more or less, and including the entire area of the said island.

JOHN CLAUSEN, Dated April 16, 1934.

Mail Schedule

For the East: Mondays, Wednesdays and Fridays 4:30 p.m. From the East: Tuesdays, Thursdays and Saturdays 10 p.m. For Vancouver: Tuesday 12:30 p.m. Thursday 9:15 p.m. Friday 11 p.m. May 9, 18 and 28 p.m. Mondays and Wednesdays (by train) 4:30 p.m. From Vancouver: Sunday 9 p.m. Wednesday 10 a.m. Friday p.m. May 5, 14 and 24 a.m. Tuesdays, Thursdays and Saturdays (by train) 10 p.m. For Anox and Stewart: Sunday 7 p.m. Wednesday 3 p.m. From Anox and Stewart: Tuesday 11:30 a.m. Thursday 8 p.m. For Naas River and Port Simpson: Sunday 7 p.m. From Naas River and Port Simpson: Tuesday, 11:30 a.m. For Queen Charlotte Islands: May 11 and 25 9 p.m. From Queen Charlotte Islands: May 9 and 23 a.m. For Alaska: May 5, 14 and 24 a.m. From Alaska: May 9, 18 and 28 p.m.

The Markets

Retail prices current here are as follows.

Vegetables	
New Potatoes, imported, lb.	.01
Potatoes, Ashcroft, 9 lbs.	.25
Sack	2.50
Potatoes, Vancouver, 10 lbs.	.25
Sack, \$1.90 to	2.25
Cucumbers, hothouse, each	.20
Carrots, Cal., bunch	.09
Sweet Potatoes, lb.	.10
Spinach, B.C., lb.	.09
Asparagus, B.C., lb.	.17
New Beets, bunch	.09
Green Onions, 3 bunches	.10
Onions, 6 lbs.	.25
Leeks, bunch	.05
Garlic, imported, per lb.	.35
Cabbage, B.C., new, lb.	.09
California, lb.	.07
B.C. Head Lettuce, 12c to	.10
Cauliflower, lg., Cal., 25c to	.35
Tomatoes, hothouse, lb.	.30
Parsley, bunch	.07
Turnips, new, bunch	.09
Turnips, 8 lbs.	.25
Parsnips, 6 lbs.	.25
Celery, Cal., head, 15c and	.25
Radishes, 3 bunches	.10
Fruits	
Cal. Navel Oranges, doz. 20c to	.75
Lemons, Cal., doz. 25c to	.35
Grapefruit, Cal., 5c to	.10
Florida Grapefruit, each 12c to	.18
Rhubarb, field, lb.	.04
Bananas, lb.	.15
Pears, Aust., doz. 50c to	.60
Aust. Almeira Grapes, lb.	.25
Cantaloupes, Cal., each 20c to	.25
Strawberries, Wash., basket	.20
Apples	
Winesaps, fancy wrapped 3 lbs.	.25
Box	3.25
Yellow Newtons "C" grade, 3 lbs.	.25
Box	3.00
Fancy, 3 lbs.	.25
Box	3.15
Dried Fruits	
White Figs, lb.	12 1/2
Black Cooking Figs, lb.	.10
Dates, bulk, lb.	.8c to .15
Lemon and Orange Peel	.32
Gilroy peel	.16
Prunes, 40-50, lb.	.14
Prunes, 60-70, lb.	.12 1/2
Raisins, Australian seedless, lb.	.14
Raisins, Cal. seedless, lb.	.15
Currants, lb.	.15
Apricots, lb.	.22
Apples, dried 14c to	.17
Peaches, peeled, 14c to	.17
Sugar	
White, 100 lbs.	7.55
Yellow, 100 lbs.	7.05
Lard	
Pure, lb. 15c to	.20
Eggs	
B.C. Fresh Extras, cartoned	.29
Local, new laid, doz.	.35
Bulkley Valley, fresh, doz.	.25
Flour	
Flour, 40's, No. 1 hard wheat	1.85
Second Patent	1.70
Pastry Flour, 10 lbs. 45c to	.50
Aust. Pastry Flour, 10 lbs.	.35
Honey	
Extracted Honey, per jar 20c to	.30
Comb Honey	.25

WHIFFLETS

From the Waterfront

Due to conditions that have developed since the opening of the season, the halibut landings from Areas 2 and 3 have been at a rate that, if continued, will result in closure even earlier than in 1933. At present the rate of landing is about three-quarters of a million pounds greater per month from each area than in 1933. More intensified operations by the fleet and the prevalence of shorter trips make it immediately apparent that curtailment to care for this situation is necessary if it is desired to prevent such early closure.

A good deal of halibut has been going to the Butedale plant of the Canadian Fishing Co. lately from the Canadian fleet. The majority of it goes into the cold storage plant here while some is shipped to Vancouver for the fresh fish market in the south. The Sea Maid sold 51,500 pounds at Butedale on Wednesday at 6c and 5c.

C. P. R. steamer Princess Adelaide, Capt. S. K. Gray, is due in port at 6:45 this evening from the south and will call at 10 p.m. on her return to Vancouver and waypoints.

Fish	
Smoked Kippers, lb.	15c and 20
Salmon, fresh, lb.	.20
Halibut, fresh, lb.	.15
Smoked Halibut, lb.	.15
Butter	
Fancy, cartoned, lb.	.33
No. 1 Creamery, 3 lbs.	.89
Cheese	
Ontario solids, new, lb.	22c & 25
Ontario, mature, lb.	.35
Stilton, lb.	.35
Edam, lb.	.45
Roquefort, lb.	.90
Borgonzola, lb.	.50
Meats	
Fowl, No. 1, lb.	.25
Roasting Chicken, lb.	.28
Ham, sliced, first grade	.45
Ham, picnic, first grade, lb.	.20
Bacon, side, sliced, best grade	.40
Pork, shoulder, lb.	.16
Pork, loin, lb.	.28
Pork, leg, lb.	.25
Pork, dry salt, lb.	.20
Veal, loin, lb.	.25
Veal, shoulder, lb.	.15
Beef, pot roast, lb.	.15
Beef, boiling, lb. 3c to	.10
Beef, roast prime rib, lb.	.20
Beef, steak, lb. 20c to	.25
Lamb, shoulder, lb.	.20
Lamb, leg, lb.	.30
Lamb Chops, 30c to	.35
Feet	
Wheat, Alberta	1.95
Bran	1.65
Middlings	2.60
Shorts	1.70
Oats	2.00
Fine Oat Chops	2.20
Crushed Oats	2.20
Barley	1.85
Laying Mash	2.65
Oyster Shell	1.65

When Arsenal and Huddersfield Huddled



My! My! What a mess! It really isn't an octopus as you might suspect as first glance, but actually a tangle of arms, legs and bodies emerging from a simultaneous flying leap. The picture was snapped during a recent match between Arsenal and Huddersfield, with an Arsenal forward in the act of bouncing the ball from his head to his opponents' goal.

Cricketers Complete 363 Runs For Third Wicket



When New South Wales met Queensland at Sydney, Australia, recently in a cricket match, Messrs. Bradman and Kippax made cricket history when they completed 363 runs for the third wicket. Kippax is shown above, snapped while making a long drive. He will accompany the Australian team on its tour of England.

"TILLIE THE TOILER"

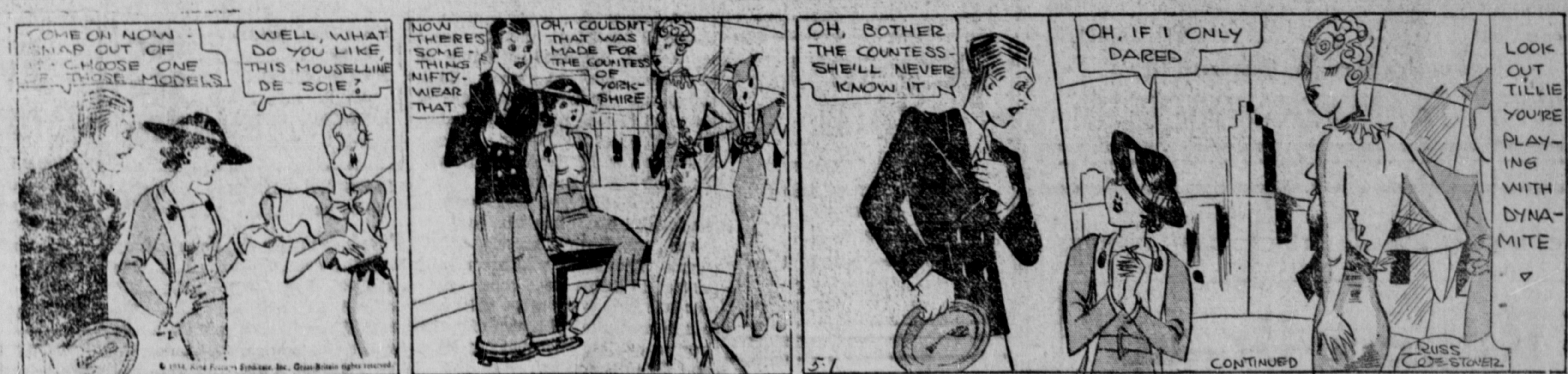
Temptation

—By Westover

The following is the scale of charges made for reading notices:
• Marriage and Engagement announcement \$2.
• Birth Notices 50c.
• Funeral Notices \$1.
• Cards of Thanks, \$2.
• Funeral Flowers 10c. per name.

Guide to Correspondents

The Daily News welcomes correspondence on live topics of the day or any other subject of public interest, but letters must be brief and to the point. The long-winded correspondent has no place in modern journalism. Every letter must be signed by the writer, not necessarily for publication but as a matter of good faith and courtesy. All unsigned documents go to the waste paper basket. Letters of a caustic character must have the signature appended for publication. Letter should be written on one side of the paper only. Correspondents must avoid personalities and the language should be such as would be allowed in the ordinary rules of debate.



Yes, These Are "Walking" Dresses

