

KEY TO MAP

1. ROOSEVELT MEMORIAL CAIRN—FRANKLIN D. ROOSEVELT PARK.
2. CANADIAN NATIONAL DOCK.
3. POST OFFICE.
4. TOURIST INFORMATION BUREAU AND MUSEUM.
5. CITY HALL.
6. BUS TERMINAL.
7. GOVERNMENT LIQUOR STORE.
8. CIVIC CENTRE.
9. FISH DOCKS, COW BAY.
10. COURT HOUSE.
11. ROAD TO PORT EDWARD AND TO CONTINENTAL HIGHWAY SYSTEM.
12. PRINCE RUPERT DRY DOCK AND SHIPYARD.
13. SEAL COVE SEAPLANE BASE.
14. CANADIAN FISH & COLD STORAGE.
15. CANADIAN NATIONAL RAILWAYS STATION.
16. COW BAY.

SHOW TONIGHT

Don't miss the B.C. Products display in Civic Centre Auditorium tonight. Stage show, quiz contest, moving pictures. Admission 25c. Gross proceeds to Civic Centre.

A. T. Parkin suffered a collapse while at work in his electrical shop this morning and was removed to the Prince Rupert General Hospital.

Wilfred Bennett of the Vancouver News-Herald staff arrived in the city on the Prince Rupert this morning to represent his newspaper at the convention here this week of the Associated Boards of Trade of Central British Columbia.

R. S. O'Meara, deputy minister of trade and industry, Victoria, arrived in the city on the Prince Rupert this morning to attend the convention of the Associated Boards of Trade of Central British Columbia.

Thomas Braidwood, president of the Vancouver Board of Trade, and W. D. Gray, chairman of the B.C. Products Bureau, were among arrivals in the city today to attend the annual convention of the Associated Boards of Trade of Central British Columbia. They are accompanied by their wives. Other guests from Vancouver are J. A. Irving, R. A. Wyman and Jack Killam.

French Uplift Brassiere
by Rose Marx
THE BRASSIERE WITH THE FAMOUS LACED BACK.

Central Interior

IS CENTRE OF THRIVING GARDENS AND ORCHARDS

By WILL ROBINSON
(From Omineca Herald)

Culture in the Terrace district has pointed in to market gardening, fruit growing and farming. The Terrace area comprises the in of the Skeena Valley and the north and trench extending 120 miles from Douglas to the Naas River.

ment especially has dem- that very high quality gardening produce can small fruits, including raspberries, black- while in the tree fruits, quality of apples, plums, and pears are grown in wards.

Terrace

race Theatre
ing on Tuesdays and Wednesdays
and Saturdays at 8 p.m.
matinee at 2:30 p.m.

AND SATURDAY
August 8 and 9
"IS A FAMILY"
Reynolds, Charlie
Pay Bainter, Helen
Cheryl Walker and
Berry.
AND WEDNESDAY
August 12 and 13
"Parade of 1946"
Storm, Phyllis Regan,
Boswell, Will Osborne
and Orchestra

CABINS
Skeena Bridge Tourist Camp
(One Mile East of Town)
Box 13 Terrace, B.C.

TERRACE
Transfer & Taxi
Storage
WE MEET ALL TRAINS—
SERVICE TO ANY POINT
IN THE DISTRICT
(H. Smith)
P.O. Box 167 Terrace

your way to the lake?

SEE OUR
TWO FLOORS
LADIES' WEAR
YARD GOODS
MEN'S WEAR
GROCERIES

THE SKEENA MERCANTILE
TERRACE

PROMPT SERVICE . . .
See Your
GENERAL MOTORS DEALER
Buick Chev. Trucks
Oldsmobile G.M.C. Trucks
Machine Work A Specialty

Machine Shop & Garage
TERRACE B.C.

HAUGLAND & KERR LTD.
Lumber Manufacturers
Lumber
TERRACE
Logs, Poles
and Piling
Agents For International Harvester Co.
Firestone Tire & Rubber Co. Ltd.
Philco Radios
Willard Batteries

THIS DISTRICT'S MINERAL YIELD SO FAR \$282,825,000

According to official figures obtained for this special industrial development issue of the Daily News from the provincial Department of Mines at Victoria mineral production of the Atlin, Cariboo, Omineca, Peace River, Portland Canal, Quesnel, Skeena and Stikine mining divisions, all comprised

that are considered the best lands of the district. The development of a certain amount of these clay subsoils has already started while the majority of it is still open for development. The prices of the land available range in very low figures.

MARKET POSSIBILITIES

Marketing possibilities of produce from the Terrace district include the present market of Prince Rupert and along the Canadian National Railways east. In 1946, a delegation from Alaska asked for large quantities of high grade produce. This can be shipped from Prince Rupert and can be in the stores in Ketchikan within 18 hours of the time it leaves the farms.

The announcement of the Celanese Corporation of America of their intention to build a \$15,000,000 pulp mill at Port Edward close to Prince Rupert, included the statement that the staff in mill and woods would total at least 1,000 people. This will add a heavy percentage to the potential market now available, giving the Terrace district a sure outlet for several times the amount of produce now being raised.

During the past five years the population of the Terrace district has more than doubled. Quite a percentage of these people have moved out onto market gardening projects and a steady influx is continuing as settlers.

ST. BONIFACE, Man., (P)—A packing company here recently began production of adhesives. A new unit of the plant manufactures dextrine adhesives, paste, flexible and liquid glue. Finished adhesives are suitable for use in packaging foods.

Smithers

CAMPERS—
Supplies delivered twice weekly to Lake Kathryn.
GOODACRES'
SMITHERS, B.C. (202)

SINGER
Electric Sewing Machines
For Rent
Reasonable Rates
Phone 864—Prince Rupert
Singer Sewing Machine Co.

We Serve You Nothing
But the Best . . .
SPECIAL RED BRAND BEEF
CHOICEST VEGETABLES
AND FRUITS
COMPLETE LINE OF
GROCERIES
• DELICATESSEN •
Choicest Cooked Meats
Roast Chicken
Meat Pies and Salads Daily

RUPERT
BUTCHERS
Phone 21—Third Ave. West

Three Sailings Per Week for VANCOUVER—VICTORIA SEATTLE (ALL TIMES SHOWN DAYLIGHT SAVING)
Tuesdays, 1:30 p.m.—Coquitlam.
Fridays, 5 p.m.—Catala.
Saturdays, 10:15 p.m.—Camosun.
KETCHIKAN
Fridays, 12:00 Midnight.
STEWART and ALICE ARM
Sundays, 8 p.m.
QUEEN CHARLOTTE'S FOR MASSETT AND PORT CLEMENTS
August 8 and 22
September 6 and 19
Midnight.
FOR SOUTH ISLANDS
August 10 and 24
September 8 and 21
Midnight.
FRANK J. SKINNER
Prince Rupert Agent
Third Ave. Phone 568

ATTENDS GENEVA MEET
EDMONTON, (P)—The deputy minister of health for Alberta, Dr. R. M. Bow, will be one of the three Canadians attending the World Health Organization meeting in Geneva in September. He will represent the Dominion Council of health.

Georgetown Man Passes
Mark Johnson, an employee of the Georgetown Lumber Company, died at Georgetown yesterday while at work. Mr. Johnson, who is survived by his wife in Georgetown and relatives in Norway, was 57 years old. Born in Norway Mr. Johnson has been a resident of Prince Rupert for 20 years. For the past two months he has been working at Georgetown.

MOOSE JAW, Sask., (P)—Careless Moose Jaw motorists are literally throwing money away. In one week recently 34 dimes were found in the city's parking meters—and all had been inserted in the slots for pennies.

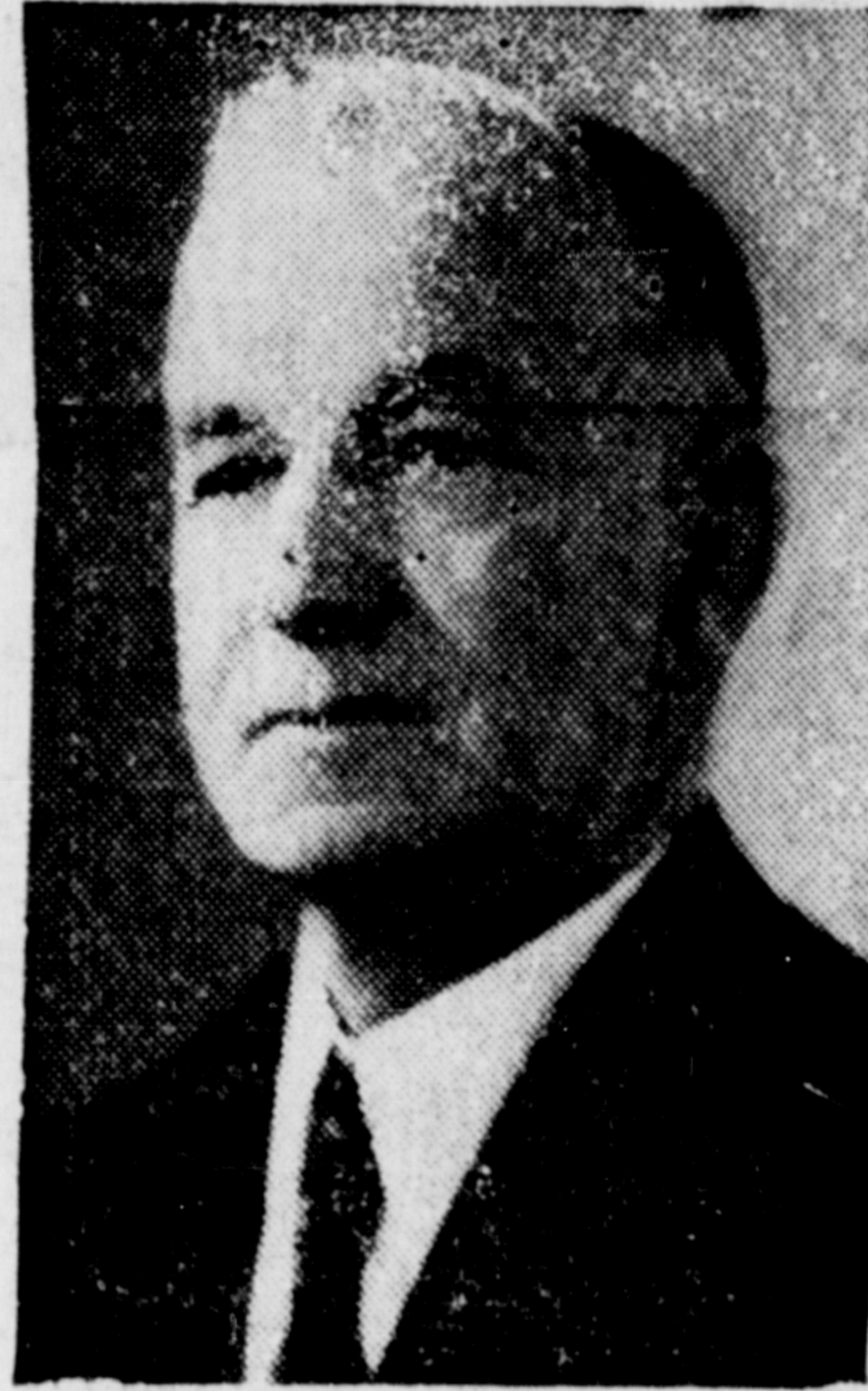
Message from HON. J. A. GLEN, K.C.
Minister of Mines and Resources, Ottawa, Canada

Sees Growing Importance of Rupert As Fine Ocean Port

THE ASSOCIATED BOARDS OF TRADE of Central British Columbia are to be congratulated for their enterprise in endeavoring at this time to direct further attention to the great wealth of mineral and other natural resources of central and northern British Columbia and to the opportunities that still await their more active development.

Rarely in Canada's history has there been a greater opportunity than the present for utilizing the resources with which we have been so abundantly endowed by nature, and of which other countries, old in development, have but a scant supply. Considering the steady expansion of the Canadian economy and the potential markets for Canada's goods in Pacific countries, the time seems to be approaching when such fine ocean ports as Prince Rupert and Vancouver will acquire an importance even beyond that long envisioned by the people of the Province.

It is a great pleasure to me to express my best wishes for the success of your deliberations and to couple these with the hope that your discussions will provide added encouragement to the good work you are doing.



NEW ENGLISH CHINA
Cups and Saucers
\$1.00 to \$15.00
FOR THE LATEST IN JEWELRY
MANSON'S
"YOUR FRIENDLY JEWELER"

USED GOODS
WE BUY AND SELL
ENTERPRISE MARKET
Phone 343 144 Third Avenue West

ADDISON RADIO
NOW AVAILABLE AT PRE-WAR PRICES
BATTERY MODEL
As illustrated—smart plastic cabinet . . . \$29.95
ELECTRIC MODEL
As illustrated—two-tone, plastic cabinet . . . \$34.95
Gordon's HARDWARE
McBride Street
Phone 311

For That Party . . .
PARAMOUNT CAFE
at Port Edward, B.C.
CHOP SUEY • CHOW MEIN
7:00 a.m. to 11:00 p.m.

Hollywood Cafe
PRINCE RUPERT'S NEWEST AND MOST UP-TO-DATE RESTAURANT
FULL-COURSE MEALS FROM 11 A.M. TO 6 A.M.
Special Dinner Every Sunday - 5 p.m. to 8 p.m.
CHINESE DISHES A SPECIALTY
WE CATER TO PARTIES
CHOP SUEY CHOW MEIN
FOR OUTSIDE ORDERS PHONE 133
735 THIRD AVENUE WEST

De Luxe Wall Tint
An Improved Sanitary Kalsomine
SOLD IN MANY PLEASING TINTS. YOU CAN MAKE YOUR HOME BRIGHT, CHEERY AND INVITING WITH DELUXE WALL TINTS.
EASY TO MIX — EASY TO APPLY
5-lb. pkg., 75 cents
THOMPSON HARDWARE CO. LTD.

for the baby . . .
BABIES' WEAR
of all kinds. You are under no obligation when looking over our display at
THE VARIETY STORE
Where Your Dimes are Little Dollars

FAMOUS RUPERT BRAND FISH PRODUCTS
Produced and Processed by
CANADIAN FISH & COLD STORAGE
PRINCE RUPERT Company Limited BRITISH COLUMBIA