

JASMINE of Southern France TOILETRIES

- Solid Creams 50c
- Liquid Creams 50c
- Face Powders 50c & \$1.00
- Brilliantine 35c & 40c
- Talcum Powder 35c
- Rouge 50c
- Lipstick 25c
- Perfume 25c to \$1.00

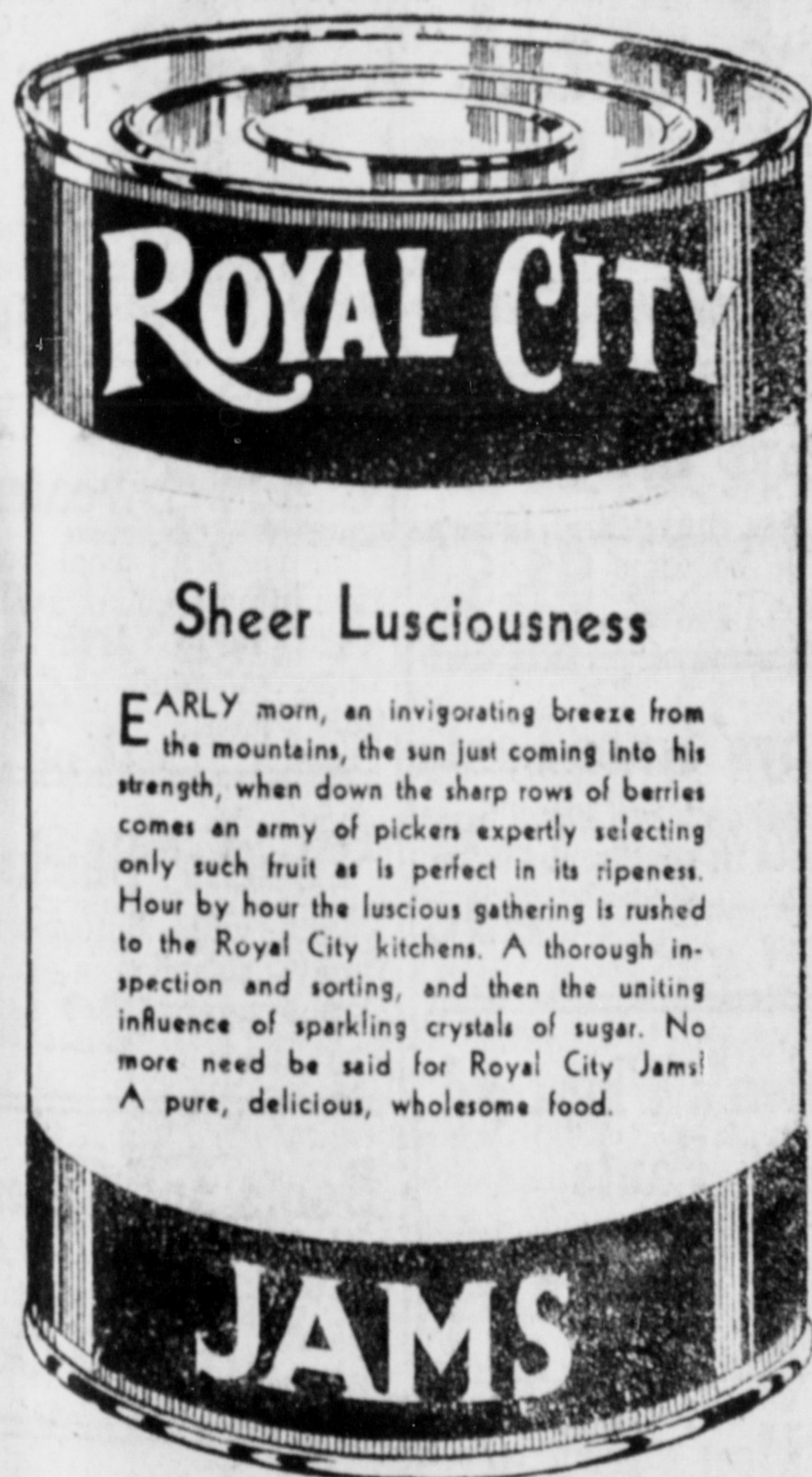
Jasmine Sets for Men and Women from 75c to \$7.50
An ideal gift!

POTTER & MOORE MITCHAM LAVENDER
Sets from \$1.00
Novelties 75c & \$1.00

Easter Novelties, 5c to \$1.25

Ormes Ltd. The Pioneer Druggists

The Rexall Store Phones: 81 & 82
Open Daily From 8 a.m. till 10 p.m.
Sundays and Holidays From 12 noon till 2 p.m.,
7 p.m. till 9 p.m.



Sheer Lusciousness

EARLY morn, an invigorating breeze from the mountains, the sun just coming into his strength, when down the sharp rows of berries comes an army of pickers expertly selecting only such fruit as is perfect in its ripeness. Hour by hour the luscious gathering is rushed to the Royal City kitchens. A thorough inspection and sorting, and then the uniting influence of sparkling crystals of sugar. No more need be said for Royal City Jams! A pure, delicious, wholesome food.

JAMS

LOCAL NEWS

L. O. B. A. Daffodil dance, Odd-fellows' Hall tonight, 9:30. Adm. 35c.

Be warm and comfortable by riding in 32 Taxi—it costs the same.

You can rent a car at Walker's as low as \$1.50 a day, plus 7c. a mile.

Meeting of the Rupert Rod & Gun Club in CITY HALL Thursday 11th, at 8 p.m. 84

Mrs. J. B. Gibson returned to the city on the Prince John yesterday from a ten-day visit to Old Massett, New Massett and Port Clements in her capacity as diocesan president of the Anglican Woman's Auxiliary

Miss Alice Hall arrived in the city on Tuesday night's train from the Anglican residential school at Onion Lake, Sask., and, after being the guest here of Very Rev. and Mrs. J. B. Gibson, Fourth Avenue East, sailed this morning on the Princess Norah for Carcross, Y.T. to join the staff of the residential school there.

FEWER COLDS 
HELPS PREVENT MANY COLDS

Tonight "Chloe," a stirring story, United Church, 8:30. Adults, 50c; children, 25c. Proceeds United L. A. and Hill 60 I. O. D. E.

Mrs. Robert Frizzell, who has been spending the past six months in Vancouver, arrived in the city on the Princess Norah this morning enroute back to her home at Surf Point, Porcher Island.

R. E. Legg, superintendent of the Surf Point mine on Porcher Island, is paying a brief business visit to town. He arrived from the mine yesterday afternoon and is returning to Porcher Island today. He reports operations at the mine continuing normally.

Capt. W. Hill Barrington, head of the Barrington Transportation Co., after having spent the winter in Seattle, was a passenger aboard the Princess Norah this morning returning to his headquarters at Wrangell to make preparations for the reopening of navigation on the Stikine River.

MANURE For Sale

\$1.50 a Load
DOMINION DAIRY
Phone—Red 608

COAL! COAL!

Our Famous Edson, Alberta and Bulkley Valley Coals are guaranteed to give satisfaction. Try a ton of No. 1 Bulkley Valley. We also sell Timothy Hay, Wheat, Oats and Barley.

Prince Rupert Feed Co.
58 — Phones — 558

Lloyd's Baby Coaches **\$27.50**
Lloyd's Collapsible Carts **\$8.50**

MACKENZIE'S FURNITURE
Phone 775 Third Ave.

A Message from W. K. Kellogg



EVERY ONE is interested in the country's improvement. We will have found economic recovery only when every one does his share.

As we see it our duty is threefold: first to provide the farmer with a fair market for his crop; second to give employment to as many people as possible; and finally to supply a wholesome food at a low cost.

When we introduced the original Corn Flakes nearly thirty years ago they were spontaneously received. They were crisp and tasted good and they were ready to serve. Year by year we enlarged our factories, hired more workers, bought more premium corn from the farmers, adopted a 24-hour working day with shorter shifts, enabling us to give employment to twenty-five per cent more people at good pay than in pre-depression times.

Kellogg's Corn Flakes are enjoyed daily by millions of people—far more than any other ready-to-eat cereal on the market. We appreciate your preference and will try constantly to give you a better product at greater value. Today you get twice as much in Kellogg's at one-half the price you paid for Corn Flakes before the war, 1908 to 1914.

Meanwhile both package and product have been steadily improved. Special processes—exclusively our own—keep Kellogg's Corn Flakes oven-fresh and flavor-perfect right to your table. You can buy them at grocers anywhere with full confidence in their guaranteed purity and quality.

We make only one brand of Corn Flakes—Kellogg's—in the red-and-green package.

W.K. Kellogg

Announcements

"Chloe," United Church, April 11 and 12.

Queen Mary I.O.D.E. Daffodil dance Easter Monday.

Presbyterian Easter Sale April 17.

United Church Easter Sale April 23.

Anglican Spring Sale, April 25.

C. N. R. A. annual dance, Moose Hall, Friday, April 26.

C.C.F. Bazaar, Eagles' Hall, May 3.

Cambria Tille's Treat, May 3.

St. Peter's Spring Sale, May 9.

Catholic spring sale, May 16.

Baptist Church Supper April 25.

International Tea Baptist Church May 8.

Gyro Hoedown, Moose Hall, Friday, May 10.

MOOSE HALL

DANCE

APRIL 12

Spinners' Spree

Everybody Welcome

Admission:

Ladies, 25c Gents, 35c

First 5 Couples admitted Free

UNION STEAMSHIPS LIMITED

Steamers leave Prince Rupert for Vancouver—
T.S.S. CATALA EVERY TUESDAY, 1:30 P.M.
Arriving Vancouver Thursday

T.S.S. CARDENA EVERY FRIDAY MIDNIGHT.
Arriving Vancouver Monday a.m.

Weekly sailings to Port Simpson Anyok, Stewart and Naas River points. Leave Prince Rupert Sunday, 8 p.m.

Further information regarding all sailings and tickets at—
PRINCE RUPERT AGENCY: Third Avenue. Phone 568

Taken suddenly ill last evening, D. McD Hunter was removed to the Prince Rupert General Hospital for an operation. Reports this morning were favorable.

Albert Farrow, steamboat inspector, after having been in the city for the past week on official duties, sails by the Prince Rupert tonight on his return to Vancouver.

William C. Fraser, well known official of the Yukon & White Pass Route at Whitehorse, was a passenger aboard the Princess Norah this morning returning north after spending the winter in Vancouver and Seattle.

James Skinner has returned to the city after spending the winter at Massett. He has largely recovered from the effects of a harrowing experience last fall when he was lost for six days while hunting in the vicinity of Parry Passage.

Herbert G. Wheeler, son of Herbert Wheeler, president of the Yukon & White Pass Route, was a passenger aboard the Princess Norah this morning returning to Skagway for the season. During the past winter he visited in England.

Mr. and Mrs. H. Lovdal and child of Mayo, who arrived in the city a few days ago after having spent the winter in the east, sailed by the Princess Norah this morning on their return to their home in the Yukon.

Mr. and Mrs. T. W. Brown, who were married recently in the city, the bride having formerly been Miss Mary Dowther, are expected home next week from a honeymoon trip to California. They are returning by motor via the central interior.

A moving picture illustrated address on points of interest in Canada was delivered before the Prince Rupert Rotary Club today at its regular weekly luncheon in the Commodore Cafe and proved very entertaining. President J. J. Little was in the chair and there was a good attendance of members with a few guests.

THRIFT Cash & Carry

These Values Offer Real Savings to the Thrifty Housewife
Specials For the Week—Friday to Thursday

SHREDDED WHEAT—10c per pkg.	OLD DUTCH CLEANSER, 2 tins 15c
"A" LARGE EGGS—Scott's or Swift's 21c per doz.	SEEDLESS RAISINS—California, 2 lbs. 26c
NABOB COFFEE—38c per doz.	LUMP SUGAR—2 lbs. 17c
PURE LARD—29c 2 lbs.	ROYAL CROWN SOAP 3 bars 10c
LEMONS—Medium Size, juicy, doz. 14c	ORANGES—Family Size, sweet, doz. 17c
MAGIC BAKING POWDER—12-oz. 23c 2 1/2-oz. 65c	BEST WHITE BEANS—Quality Guaranteed 4 lbs. 19c
PREMIUM BACON—Swift's cello wrap, lb. 36c	ORANGE MARMALADE—Nabob Special Pack 4 lbs. 42c
PICNIC HAMS—15c per lb.	DIAMOND "A" BACON per lb. 30c
CRABMEAT—Northern Pack, 1/2-lb. tin 19c	SALADA TEA—Brown Label, per lb. 54c
LYNN VALLEY PEACHES, tin 17c	LIBBY'S CORNED BEEF, tin 10c
LUX SOAP—per cake 5c	REDBIRD MATCHES—3 boxes 24c
CORN ON COB—Nabob No. 3 tins, per tin 23c	GREEN BEANS—Royal City Cut, per tin 12c
AUSTRALIAN ONIONS 4 lbs. 15c	FRESH SPINACH—per lb. 9c
BUNCH CARROTS—2 bunches 11c	UPRIVER PARSNIPS—6 lbs. 18c

D. ELIO

Furniture Dealer Phone Green 421 Exchanging & Auctioneer
Axial Balance Compass—Lectroflater
Voltage 110
Hand power washing machine, kitchen ranges, beds, linoleum, rugs, barber fixtures—2 chairs, mirror, vibrator etc.

GARDEN SUPPLIES

We have a complete line of garden necessities: Seeds, Spades, Lawn Mowers, Rakes, Hoes, Wheelbarrows, Trowels, Mattocks, Shovels, Etc.

"Complete Fertilizer," a B. C. Product, made at Trail, 5c per pound

We Deliver

THOMPSON HARDWARE CO. LTD.