

Today's Weather

Prince Rupert—Clear, light northerly wind; barometer, 29.50; temperature, 30; sea smooth.

The Daily News

NORTHERN AND CENTRAL BRITISH COLUMBIA'S NEWSPAPER

Tomorrow's Tides

High 6:10 a.m. 18.4 ft. 18:47 p.m. 15.0 ft. Low 12:40 p.m. 8.5 ft.

Vol. XXV., No. 12.

PRINCE RUPERT, B.C., WEDNESDAY, JANUARY 15, 1936

PRICE: 5 CENTS

SAN FRANCISCO IS NOW LOSING OUT

Shipping Interests To Omit Calls on Account Of Waterfront Trouble

One Steamer Already Diverted to San Pedro and Another May Follow Suit—Announcement Made By Assistant Secretary of Labor

WASHINGTON, D.C., Jan. 15.—Owing to continued labor troubles on the San Francisco waterfront, shipping interests are proposing to drop the city of the Golden Gate as a port of call, it was stated yesterday by Edward F. McCready, assistant secretary of labor. The Panama Pacific Line has announced that its steamer California, leaving for New York, will sail on Sunday from San Pedro instead of San Francisco, passengers from San Francisco to be taken to San Pedro by rail. The steamer Virginia, now on the way from the Atlantic Coast to California, may also be diverted from San Francisco.

BOLSTERING CONFERENCE

Germany and Soviet Russia May Be Invited to Join Naval Sessions

LONDON, Jan. 15.—Great Britain and United States are endeavoring to breathe new life into the wavering naval conference here from which Japan is withdrawing today. There were special meetings last night between the British, American, Italian and French delegates.

It is possible that Germany and Soviet Russia may be invited to participate in the conference.

Japanese delegates, while withdrawing from the conference, will remain in London for the meantime.

TODAY'S STOCKS

(Courtesy S. D. Johnston Co.)

Vancouver

- B. C. Nickel, 19. Big Missouri, 70. Bralorne, 6.60. B. R. Cons., .04. Cariboo Quartz, 1.25. B. R. X. Gold, .10. Dentonia, 30. Dunwell, .03 1/2. Georgia River, .01 3/4 (ask). Golconda, .14. Indian, .02. Minto, .08. Meridian, .10 1/2. Morning Star, .02 3/4. National Silver, .02 1/2. Noble Five, .04 1/4. Pend Oreille, 1.03. Porter Idaho, .04. Premier, 1.90. Reno, 1.10. Silver Crest, .00 1/2. Salmon Gold, .11 1/2. Taylor Bridge, 14 3/4. Wayside, .14 3/4. Whitewater, .17 1/2. Grange, .03 1/2. Glacier Creek, .01.

Toronto

- Central Patricia, 2.99. Chibougamau, 32. Lee Gold, .04. Granada, .22. Inter, Nickel, 46.00. Macassa, 3.50. Noranda, 46.50. Sherritt Gordon, 1.05. Siscoe, 3.27. Ventures, 1.62. Lake Maron, .04. Teck Hughes, 5.10. Sudbury Basin, 3.05. Smelter Gold, .05 1/2. Can. Malartic, 1.18. Little Long Lac, 7.25. Stadacona, 22. Pickle Crow, 4.60. McKenzie Red Lake, 1.62. God's Lake, 1.39. Sturgeon River, .50. Red Lake Gold Shore, .68. San Antonio, 3.28.

BIGGEST AIRPLANE DISASTER IN STATES

REVISION OF LAWS

Minimum Wage And Hours Of Work Regulations To Be Co-ordinated By Board Of Industrial Relations

VICTORIA, Jan. 15. (CP)—Revision of all regulations on minimum wages and hours of work passed within the last two years is proposed by the Board of Industrial Relations to iron out difficulties in operation and enforcement.

PROBE OF BOMBINGS

Swedish Red Cross Society Demands Full Investigation Into Ethiopian Affair

GENEVA, Jan. 15.—The Swedish Red Cross Society made formal demand yesterday for a full investigation into the recent bombing of a Swedish hospital in Ethiopia by Italian airmen and the punishment of the guilty flier or fliers. The right to claim damages is also reserved.

Rails, Utilities Bright Feature

Industrials Displayed Weakness In Yesterday's Trading In New York

NEW YORK, Jan. 15.—Rails and utilities were again the bright feature on the New York Stock Exchange yesterday. Industrials displaying weakness. The day's turnover amounted to 2,790,000 shares. Closing averages were as follows: Industrials, 146.33, off .19; rails, 43.55, up .28; utilities, 30.97, up .74; bonds, up .22.

BAR SILVER

NEW YORK, Jan. 15. (CP)—Bar silver prices were again unchanged yesterday on both New York and London markets. The New York price was 49 3/4¢ per ounce and the London price, 20 1/2 pence. There was no change again today.

Two Bank Officials Are Shot As Three Bandits Hold Up Branch Bank of Commerce at Vancouver

Manager Thomas Winsby and Teller William Hobbs Victims—Gunmen Carry Off \$1200 in Cash Today at Noon

VANCOUVER, Jan. 15. (CP)—Three armed bandits held up the Canadian Bank of Commerce at Powell Street and Victoria Drive at the noon hour today, shot Thomas Winsby, the manager, in the left arm and Will Hobbs, teller, in the neck, and escaped with a sum estimated at \$1200. Hobbs is in a critical condition.

The gunmen escaped in a taxi which they commandeered after throwing the driver out in Stanley Park.

Three customers were in the bank at the time of the entry of the bandits. One of the unwelcome visitors covered the customers, a second went into the manager's office and a third walked to the teller's cage. The manager and teller were not given much chance to comply with the demands of the bandits before being shot down.

NORTH HAS COLD SNAP

Sub-Zero Temperature Readings In Interior—Skating in Prince Rupert

The first real cold snap of the present winter in Prince Rupert district seems to have arrived with sub-zero temperature readings recorded in the interior and several degrees of frost at all coastal points. Burns Lake, with two below zero, is the coldest point in the district.

Skating is now being enjoyed in the city but the ice is not thick enough as yet to make the deeper ponds very safe.

This morning's district weather report of the Government's Telegraphs was as follows:

- Terrace—Clear, north wind, temperature, 16. Anyox—Clear, north wind, 12. Stewart—Clear, calm, 9. Hazelton—Cloudy, north wind, 4. Smithers—Cloudy, calm, milder. Burns Lake—Snowing, calm, zero.

VALUABLE BIRDS

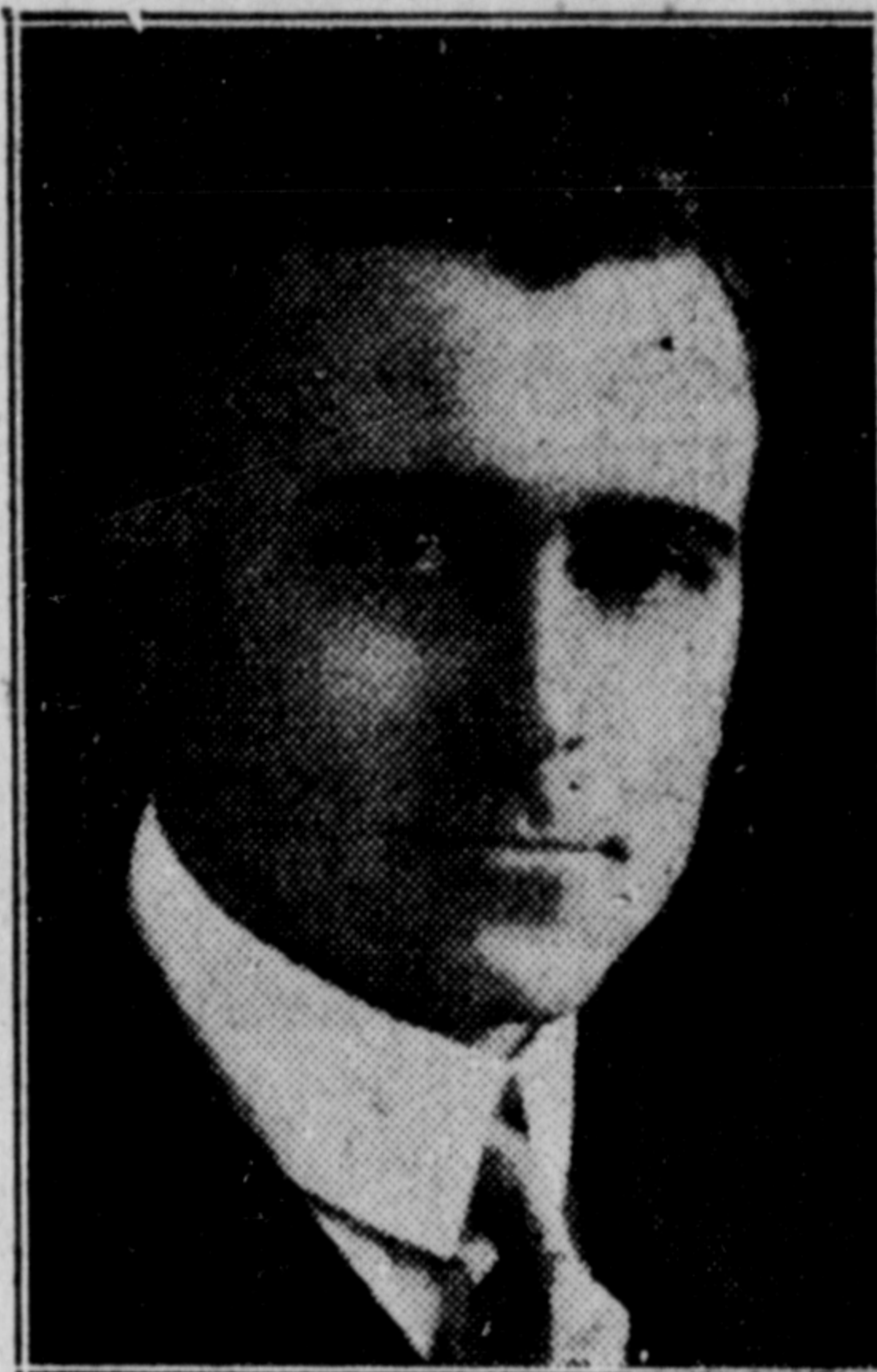
LONDON, Jan. 15. (CP)—Among the 3,000 birds at a bird show here were Yorkshire canaries valued at \$750 each and an Abyssinian Splendid Sunbird valued at \$100.

Where Italian Warships Assemble



With Italy preparing for possible war in the Mediterranean, heavy concentration of Italian warships and aeroplanes in the Dodecanese Islands, off the Turkish coast, have been reliably reported in Rome. At the same time, it is reported that between 10,000 and 15,000 Italian naval officers and specialists are being mobilized. The naval and air concentrations in the Dodecanese Islands, shown in the map, place a powerful Italian striking force in a position that threatens the British fleet mobilized at Alexandria, Egypt, and gives Italy a war force close to the Suez Canal.

Visitor Here



N. B. WALTON,

In the course of a western inspection tour, Norman B. Walton, general superintendent of transportation for the western region of the Canadian National Railways with headquarters in Winnipeg, arrived in the city from Vancouver on the steamer Prince George this morning and will proceed east by train in the evening. Mr. Walton was formerly general superintendent here and is being given a hearty welcome by his many local friends. He is accompanied on the western trip by his wife and by Robert Creelman, passenger traffic manager for the western region with headquarters at Winnipeg, and Mrs. Creelman. G. A. McNicholl, general passenger agent, Vancouver, also came north with Mr. Walton and Mr. Creelman and will go as far as Jasper Park with them, returning to Vancouver from there. Mr. Walton reports a general improvement in the tone of business throughout the west.

START NEW OFFENSIVE

Emperor Haile Selassie to Personally Lead His Forces Towards Makale

ADDIS ABABA, Jan. 15.—Addis Ababa seethed with excitement when it was reported in authoritative quarters yesterday that Emperor Haile Selassie was planning to personally lead a renewed Ethiopian offensive with the recapture of Makale as the principal objective.

New Peace Plan

ROME, Jan. 15.—European statesmen it was reported here last night, were quietly working on a new peace plan for the Italo-Ethiopian conflict which would permit Premier Mussolini to save his face.

Kipling is Still Fighting Grimly Against Death

LONDON, Jan. 15.—Rudyard Kipling, famous British poet, was still fighting stubbornly for life today following a recent emergency operation for a gastric disorder. Despite his advanced age of over seventy years and his critical condition, physicians give him a slight chance for recovery.

MANY DIE IN CRASH

Seventeen Perish When U. S. Air Liner Meets With Disaster In Arkansas

GOODWIN, Ark., Jan. 15.—Fourteen passengers and the crew of three perished early last evening when the American Air Line's luxury plane "Southerner" bound from Memphis, Tenn., to Little Rock, Ark., crashed deep in a dense swamp two miles from here. The big machine struck with such force that it was practically demolished and those on board are all believed to have been instantly killed.

Two hours after the plane was reported missing, it was discovered by searchers.

Jerry Marshall was pilot in charge, the other members of the crew being co-pilot and stewardess.

The death list is the largest ever recorded in an airplane disaster in the United States.

The remnants of the seventeen bodies were recovered today and removed to a funeral home where it is hoped identification will be made later.

TRADE OF CANADA UP

Exports in Many Lines Showed Increase With Gain in Imports Not so Marked

OTTAWA, Jan. 15. (CP)—The important gain in Canada's external trade was a feature of the economic betterment of the year, according to Hon. W. D. Euler, minister of trade and commerce. As wholesale prices remained fairly stable in the last two years, the gain in the volume of the trade corresponded rather closely with the increase in the value. The best available method of appraising the trend of Canadian trade is to compare the statistics for the first 10 months of 1935 with the level of the same period of the preceding year.

The exports of Canadian produce were valued at \$576,800,000 in the available period of 1935 against \$526,900,000 in the same months of 1934. The gain of 9.5%, while by no means spectacular, must be considered satisfactory. Eight of the nine groups of the chief component material classification showed gains in this comparison. The exception was the group of crop products which showed a decline of 3%. The outward shipment of animal products was accelerated to the extent of 18%. The two classes of crop and animal products consisting of farm products and goods manufactured therefrom showed a gain of \$7,860,000. Textile exports showed the largest percentage gain of 28.3%, but the absolute increase was unimportant.

The exports of wood and paper reached the relatively high total of \$142,000,000, a gain of 8.2% over the same period of 1934. The iron and steel group increased 29.4%.

RECORD AERIAL FEAT

SOUTHEND, Eng., Jan. 15. (CP)—C. L. Storey, a motor engineer, who had never been in the air previously, made a perfect flight around the municipal aerodrome here in a "flea" plane of his own construction.