

RUPERT PEOPLES STORE



SUMMER CAMP AND HOLIDAY WEAR

Complete selection for girls and wee tots of all ages, sold at Vancouver prices. Our price must be right.

RUPERT PEOPLES STORE

STORMY WEATHER



If your roof can't take it, protect your house with ASPHALT SHINGLES

For Estimates Call 363
MITCHELL & CURRIE LTD.
Builders and Contractors

CHANDLER'S PORTRAIT STUDIO
Film Finishing — Enlarging
Flash Photos Taken at Home
Phone Green 389 216 4th St.
PRINCE RUPERT, B.C.

CHIROPRACTOR
John F. L. Hughes, D.C., Ph.C.
21-22 Besner Block
Phone BLUE 442 for Appointment
HOURS
10:30 a.m. to 12:30 p.m. and 2 to 5 p.m.
EVENINGS
Monday and Friday, 7:30 p.m. for those unable to come during the day. RECEPTIONIST in attendance afternoons.

COTTAGE CHEESE
New Creamed — Fresh Made
VALENTIN DAIRY
Your Daily ALL-WEATHER SERVICE

THE VALUE OF A DIAMOND

- Depends more on its perfection and purity than on its size.
- It should be pure and clear like water.
- It should have no flaws or dark spots.
- It should sparkle.
- It should be well cut and symmetrical in shape.
- And of course it should be set in a good looking setting.
- Our diamonds are guaranteed perfect and set in well known makes of settings.
- Our prices are standard and reasonable.



CFPR Radio Dial
1240 Kilocycles
(Subject to Change)

WEDNESDAY—P.M.

- 4:00—Bernie Braden Tells a Story
- 4:15—Stock Quotations and Interlude
- 4:30—Footlight Favorites
- 4:45—Stories for Sandy
- 5:00—Pops On Parade
- 5:30—Don Messer and His Islanders
- 5:45—Supper Varieties
- 6:00—Supper Serenade
- 6:15—Sammy Kaye and Orchestra
- 6:30—Musical Varieties
- 6:45—Plantation House Party
- 7:00—CBC News
- 7:15—The Poets Look
- 7:30—Ella Spivak, Violinist
- 8:00—Odd Man Out
- 9:30—Chamber Music
- 10:00—CBC News
- 10:15—Summer Bookshelf
- 10:30—London Studio Concert
- 11:00—Weather and Fish Arrivals

THURSDAY—A.M.

- 7:00—Musical Clock
- 8:00—CBC News
- 8:15—Morning Song
- 8:30—Music for Moderns
- 8:45—Little Concert
- 9:00—BBC News and Com'ty
- 9:15—Morning Devotions
- 9:30—Sunrise Serenade
- 9:45—Coffee Time
- 9:59—Time Signal
- 10:00—Ellen Harris
- 10:15—Morning Melodies
- 10:30—Roundup Time
- 10:45—Scandinavian Melodies
- 11:00—T.B.A.
- 11:15—Songs of Yesterday
- 11:30—Weather Report
- 11:31—Message Period
- 11:33—Recorded Interlude
- 11:45—Mediodia

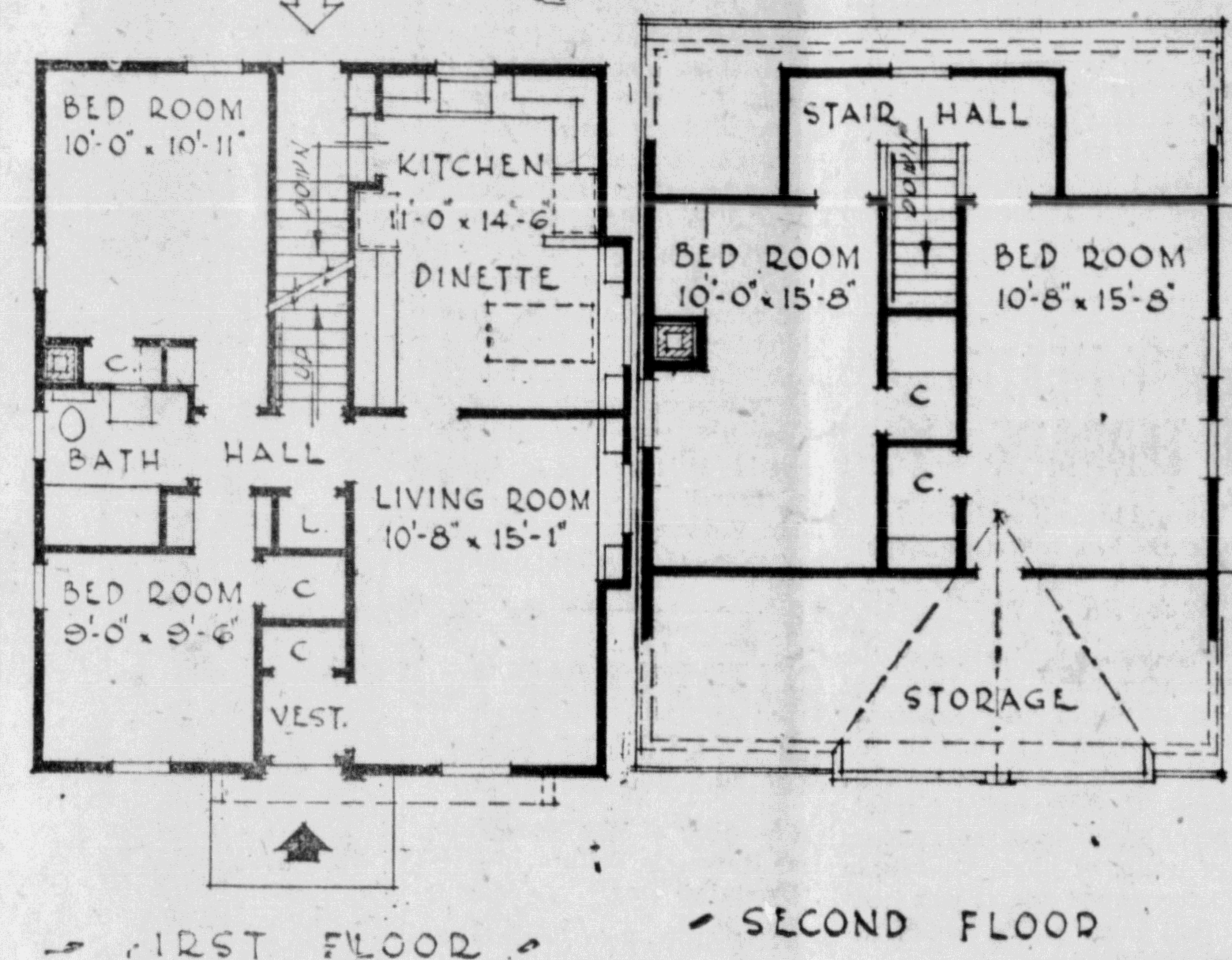
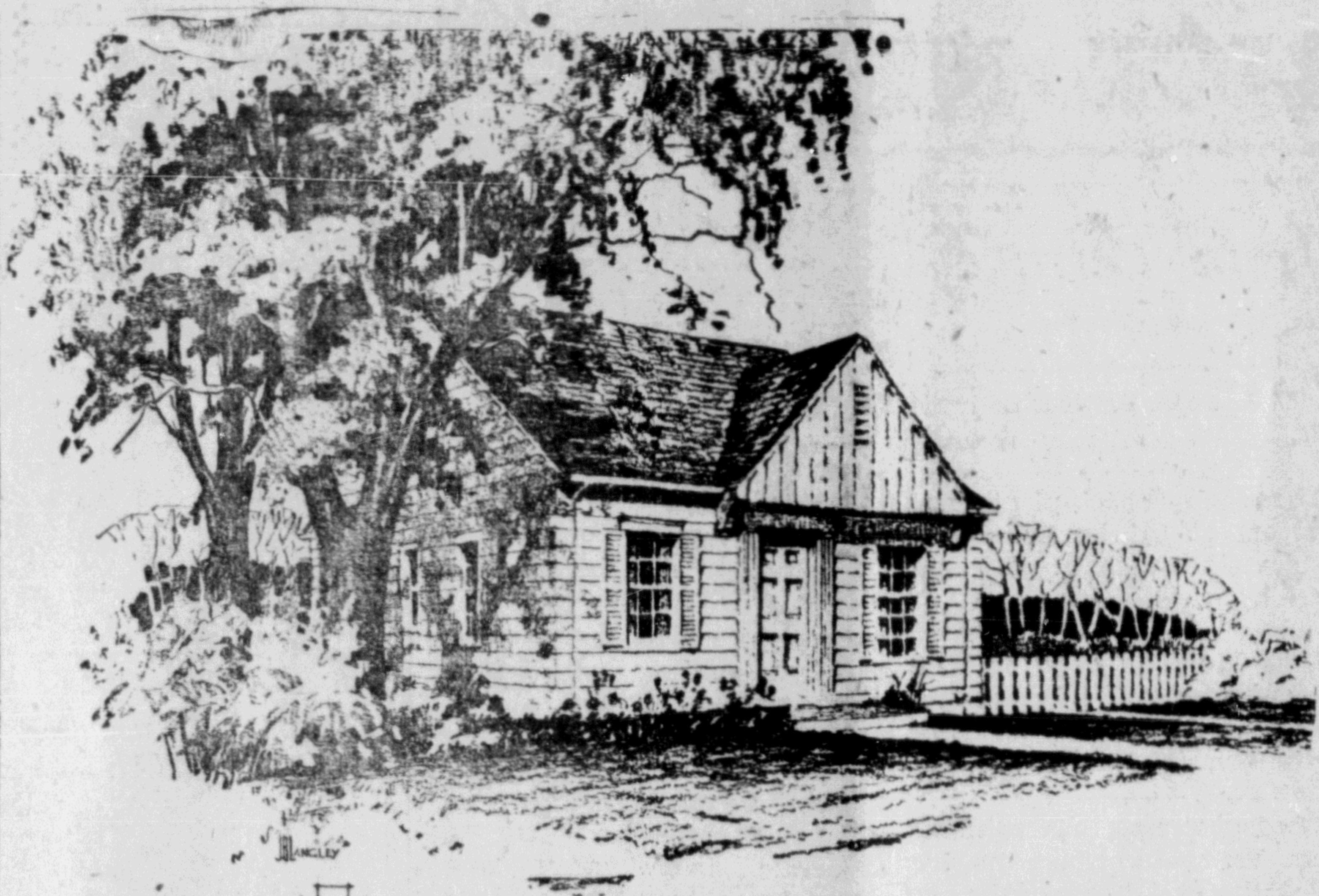
— P.M. —

- 12:00—Mid-Day Merodies
- 12:15—CBC News
- 12:25—Program Resume
- 12:30—B.C. Farm Broadcast
- 12:55—Recorded Interlude
- 1:00—Intermezzo
- 1:30—Afternoon Concert
- 2:00—In a Lighter Mood
- 2:30—Musical Program
- 2:45—Commentary—Books
- 3:00—Musical Program
- 3:15—Serenade
- 3:30—Commentary—Divertimento

Try a Classified Ad for Results.

Better English
By D. C. WILLIAMS

1. What is wrong with this sentence? "This is more difficult than what I expected."
 2. What is the correct pronunciation of "affluence"?
 3. Which one of these words is misspelled? Despondency, descendants, deterrent.
 4. What does the word "aberration" mean?
 5. What is a word beginning with CO that means 'to praise'?
- Answers
1. Omit WHAT. 2. Accent first syllable, not the second. 3. Descendants. 4. The act of wearing, or rubbing off; the wearing away by friction. "Time has caused an abrasion of the coins." 5. Commend.



This six-room, frame house with basement is the popular one-and-a-half storey type. The house has been planned so that the second floor rooms may remain unfinished at the outset and be finished when required. A center partition in the basement provides a large uninterrupted space which could be finished as a recreation room. For estimating purposes, the floor area is 1,284 square feet.

MARKETS

Fresh Fruit	Strawberries, box	25
	Bananas, lb.	23
	Apples, cooking, lb.	14
	Lemons, large Cal., doz.	4
	Grapefruit, Texas (white), 100's, 4 for	2
	Oranges (Navel), 28-5	28-5
	Dates, 2 lb.	4
Vegetables	Celery, lb.	17
	Rhubarb, 2 lb.	19
	Beets, bunch	15
	Parsley, bunch	15
	Spinach, 2 lb.	27
	Radishes, bunch	08
	Green Onions, 3 bunches	20
	Turnips, lb.	08
	Mushrooms, lb.	35
	Head Lettuce, doz.	15
	Cooking Onions, 3 lbs.	29
	Cabbage, lb.	11
	Tomatoes, No. 1, lb.	35
	New Potatoes, 5 lb.	39
Canned Vegetables	Dill Pickles, gal.	179
	Cut Green Beans, icy.	20
	No. 5 Peas, fancy	20
	Mixed Vegetables	23
	Diced Beets, per tin	14
	Wax Beans, choice	19
	Mixed Peas and Carrots	19
	Pumpkin, 2 for	25
	Baked eBeans, 20-oz. tin	22
	Baked eBeans, 15-oz. tin, ea.	21
	Tomatoes, 28-oz.	27
Fresh Milk	Quart	22
	Pint	12
	Cream, 1/2 pint	28
Eggs	Large carton, doz.	63

Butter	Medium	51
	First Grade, lb.	64
Margarine	lb.	39
Milk	Evaporated, 16-oz. tins, 2 for	33
	Case	7.70
Cheese	Canadian Cheese, lb.	55
Flour	Pastry Flour, 7 lbs.	58
	Flour, 49's, No. 1 hard wheat 3.65	3.65
	Flour, 24's	1.89
Tea and Coffee	Coffee, lb.	66
	DeLux quality, lb.	1.14
Juices	Tomatoes, 20-oz. ea	15
	25-oz. gallon	34
	Apple, 20-oz. tin, 2 for	29
	48-oz.	30
	Orange, 20-oz.	18
	grapefruit, 20-oz.	15
Canned Fruits	Pineapple, crushed and pieces, 20-oz.	36
	Apricots, 20-oz.	33
	Cherries, fancy, 20-oz.	38
	Loganberries, 20-oz.	41
	Peaches, choice	28
Lard	Pure, lb.	25
	Shortening	32
Soap	Soap, face, bar	10
	Laundry, cake 2 for	25
	Soap Powders, large	39
Glace	Cherries, 1/2 lb. pkt.	35
	Almond Paste, lb.	50
	Coconut, lb.	39
	Fruit Cake Mix, lb.	34
	Dates, fancy, 1 lb. pkt.	34
	Seedless Raisins, 2 lbs.	32
	Seeded Raisins, 1 lb.	21
	Shelled Walnuts, 1/2 lb.	45
	Shelled Almonds, 6 oz.	39
	Shelled Brazils, 1/2 lb.	45
Jams—Pure	Strawberry, 24-oz.	58
	Raspberry, 24-oz.	39
	Blackberry, 4-lb.	77
	Cherry, 24-oz.	54
	Peach, 4 lb.	83
	Apricot, 4-lb.	79
Soups	Canned Soups	13 to 20
Meats	Chicken, lb.	75
	Ham, boned and rolled, lb.	90
	Ham, reg. lb.	72
	Bologna, lb.	49
	Wieners, lb.	50
	Garlic Sausage, lb.	50
	Bacon, pkg. 1/2 lb.	47
	Bacon, side, piece	90
	Cottage Roll, lb.	75
	Liver Sausage, lb.	50
	Spare Ribs, lb.	55
	Fresh Pork Ham, lb.	70
	Pork Chops, lb.	75
	Pork Sausage, lb.	55
	Steak, T-Bone lb.	85
	Pork Tenderloin, lb.	1.05
	Steak, round, lb.	75

SAVOY HOTEL
W. L. WOODS, Prop.
PHONE 37 P.O. BOX 1397
FRASER STREET
PRINCE RUPERT

GREER & BRIDDEN
CONTRACTORS AND BUILDERS
• CONSTRUCTION
• ALTERATIONS
• REPAIRS
FLOOR SANDING A SPECIALTY
RED 551 P.O. BOX 721



PRINCE RUPERT BOWLING ALLEY
OPEN DAILY FROM 3:30 P.M. TO 11 P.M.
Saturdays — 12 Noon to 12 Midnight
PHONE RED 709
Bowl in Clean and Pleasant Surroundings

COLORFUL, DRAMATIC

"Tap Roots" at Capitol Theatre Starting Thursday

Hailed as an outstanding technicolor drama, "Tap Roots," which co-stars Van Heflin and Susan Hayward, and has Boris Karloff in the leading featured role, will open Thursday at the Capitol Theatre. Scenarized from James Street's novel of the same name, "Tap Roots" is a saga of the independent Dabney clan of Lebanon County which fled from Mississippi prior to the Civil War.

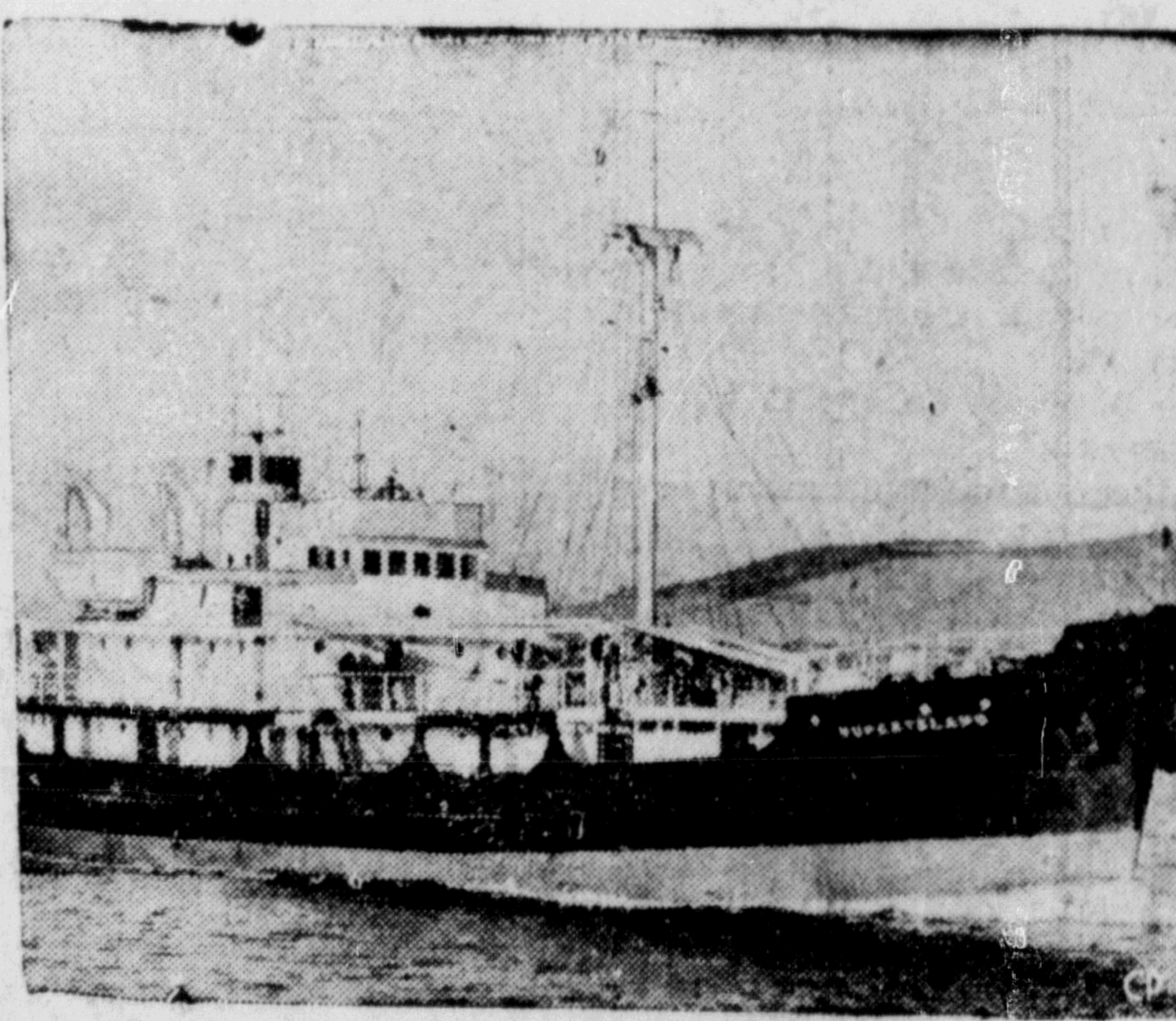
Van Heflin, as Keith Alender, a renegade newspaper publisher, falls in love with Miss Hayward, and for this reason alone joins her in their rebellion. Heflin's famous dueling pistols are feared by any man who crosses him. The beautiful, red-haired Miss Hayward, gives her love to two men and, in keeping with the times, lives for the hour. Karloff, as a Choctaw Indian, whose bullwhip is as deadly as Heflin's dueling pistol, is a friend of the family.

Among the supporting players, Julie London has the role of Miss Hayward's younger sister, Ward Bond is seen as their stubborn and defiant father. Richard Long plays the hot-headed younger brother.

With action centered on Lebanon County in Mississippi, the story of "Tap Roots" begins in 1860. When Mississippi secedes from the Union, Lebanon County becomes a free and independent community. Dramatic incidents which follow, including Lebanon County's furious but futile conflict with the might and millions of the Confederacy.

HOW CAN I ???
By ANNE ASHLEY

Q. How can I prevent cracking of patent leather?
A. Olive oil, glycerine, or sweet oil rubbed over the surface of patent leather occasionally will prevent it from cracking.
Q. How can I make a substitute for cream of tartar?
A. When mixing cake that calls for cream of tartar, a good substitute is buttermilk. If the buttermilk is not sour enough, add a little vinegar.
Q. Are short or tall candles preferable for the dinner table?
A. Tall candles are preferable, as they bring the light above the level of the eyes and produce a soft glow on the faces.



NASCOPEE'S SUCCESSOR—The trim motor vessel Rupertsland, owned by the Hudson's Bay Company, will sail from Montreal on her maiden voyage early in July to supply many of the Arctic outposts formerly served by the Nascopee, which sank two years ago after 33 years of service. Three Newfoundland schooners have been chartered by the H.B.C. to look after other ports on Baffin Island which were formerly on the Nascopee route. (C. P. Photo)

HOUSEHOLD NEEDS
STEP LADDERS CLOTHES DRYERS KITCHEN UTENSILS
CLOTHES LINES IRONING BOARDS GALVANIZED WARES
SATIN-GLO
ENAMELS — VARNISHES — PAINTS
THOMPSON HARDWARE CO. LTD.

PACIFIC Stevedoring & Contracting COMPANY LIMITED
General Stevedores and Contractors
Stevedores for Canadian National Railways
CABLE ADDRESS "PACIFICO" HEAD OFFICE PRINCE RUPERT, B.C.

TODAY — 7-9 p.m.

GEORGE BRENT JANE POWELL FRANCIS GIFFORD LAURITZ MELCHIOR
— in —
'LUXURY LINER'
Capitol
STARTS THURSDAY
Walter Wanger Presents
TAP ROOTS
Technicolor
Starring VAN HEFLIN — SUSAN HAYWARD
A UNIVERSAL INTERNATIONAL PRODUCTION

Steamship Movements

For Vancouver
Sunday—ss. Coquitlam, 10 p.m.
Tuesday—ss. Camosun, 1:30 p.m.
Thursday—ss. Prince Rupert, 11:15 p.m.
From Vancouver
Sunday—ss. Camosun, 11 p.m.
Wednesday—ss Prince Rupert, 10 a.m.
Friday—ss. Coquitlam, 1 p.m.
For Alice Arm and Stewart
Sunday—ss. Camosun, 11 p.m.
From Alice Arm and Stewart
Tuesday—ss. Camosun, a.m.
From Ocean Falls
Wednesday—ss. Prince Rupert, 10 a.m.
For Ocean Falls
Thursday—ss. Prince Rupert, 11:15 p.m.
For Alaska
Wednesday—ss. Prince Rupert, midnight.
Saturday—ss. Coquitlam, 10 p.m.
From Alaska
Thursday—ss. Prince Rupert, to Queen Charlotte Islands, Sunday—ss. Coquitlam, a.m.



"It's lucky I brought this along. It's so dark in there you wouldn't have seen where we were going."

TUNNEL OF LOVE
COMPLETELY REBUILT OR REMODELLED
Your living room suite can be made to look like new. We begin at framework, re-tie springs, and new heavy webbing and lining.
MATSON'S
Blue 818 UPHOLSTERING P.O. Box

Look over our Cold and Canned MEATS FOR YOUR EATING PLEASURE
TERRACE MEAT MARKET
George E. Peters, Prop.
QUALITY — SERVICE
MEATS — FISH — BUTTER — EGGS — POULTRY

HOLLYWOOD CAFE
MOST UP-TO-DATE CAFE IN THE CITY
OPEN FROM 11:30 A.M. TO 3:30 A.M.
We Specialize in Chinese Dishes
CHOP SUEY—CHOW MEIN
For Outside Orders PHONE 133