

DISPATCHED
12
CABS

The Daily News

NORTHERN AND CENTRAL BRITISH COLUMBIA'S NEWSPAPER
Published at Canada's Most Strategic Pacific Port — "Prince Rupert, the Key to the Great Northwest"
VOL. XXXIX, NO. 192
PRINCE RUPERT, B.C., THURSDAY, AUGUST 17, 1950
PRICE FIVE CENTS

PROVINCIAL LIBRARY,
118
VICTORIA, B. C.

ORMES DRUGS
Daily Delivery
PHONE 81

Railway Strike Prospect More Ominous

Enlistments From Prince For New Canadian Brigade

Prince Rupert men left last night by train for Vancouver to join Canada's special brigade for the United Nations. They have passed physical examinations here and will be processed before being allotted to their regiments. They then go on to basic training, probably with the 1st Canadian Infantry Division.

Greece Is Having Cabinet Crisis

ATHENS — Sophocles Venizelos announced today that five Liberal party ministers will resign from the government, action that means collapse of the coalition cabinet that was formed last April under Premier Nicholas Plastiras.

Venizelos, Liberal party leader, has demanded resignation of Plastiras. Plastiras had been under fire because of his insistence that Communists convicted of treason be granted amnesty.

Indian 'Quake Damage Heavy

GAUHATI, India — Tuesday's earthquake did about \$2,150,000 damage in upper Assam, first official communications indicated today. Most of the damage occurred in North Lakhimpur Jorhat and Pasigat. More than 2,000 government and private buildings were destroyed. Five persons are reported killed.

Strike In Prince Rupert

Not yet in effect, the rail strike has affected the movement of fish from Alaska and other sources into the area.

30,000 Reds Advancing On Taegu

United States Forces Under Serious Threat

Food Shortage Not Expected

Prince Rupert meat and grocery wholesalers are well stocked in case the impending rail and steamship strike next Tuesday becomes a reality, it was learned today.

United States Forces Under Serious Threat

TOKYO (CP)—Three divisions of North Koreans—25,000 to 30,000 men—started a heavy attack today on the Korean central front. Drive was made down the line between Waegwan and Kunmui, fifteen miles north of Taegu, the South Korean emergency capital.

More Americans Are Massacred

THIRTY-TWO American prisoners, with arms tied behind their backs, were shot dead today by Red Koreans on a hill west of Waegwan just before a United States patrol reached the spot.

United States Forces Under Serious Threat

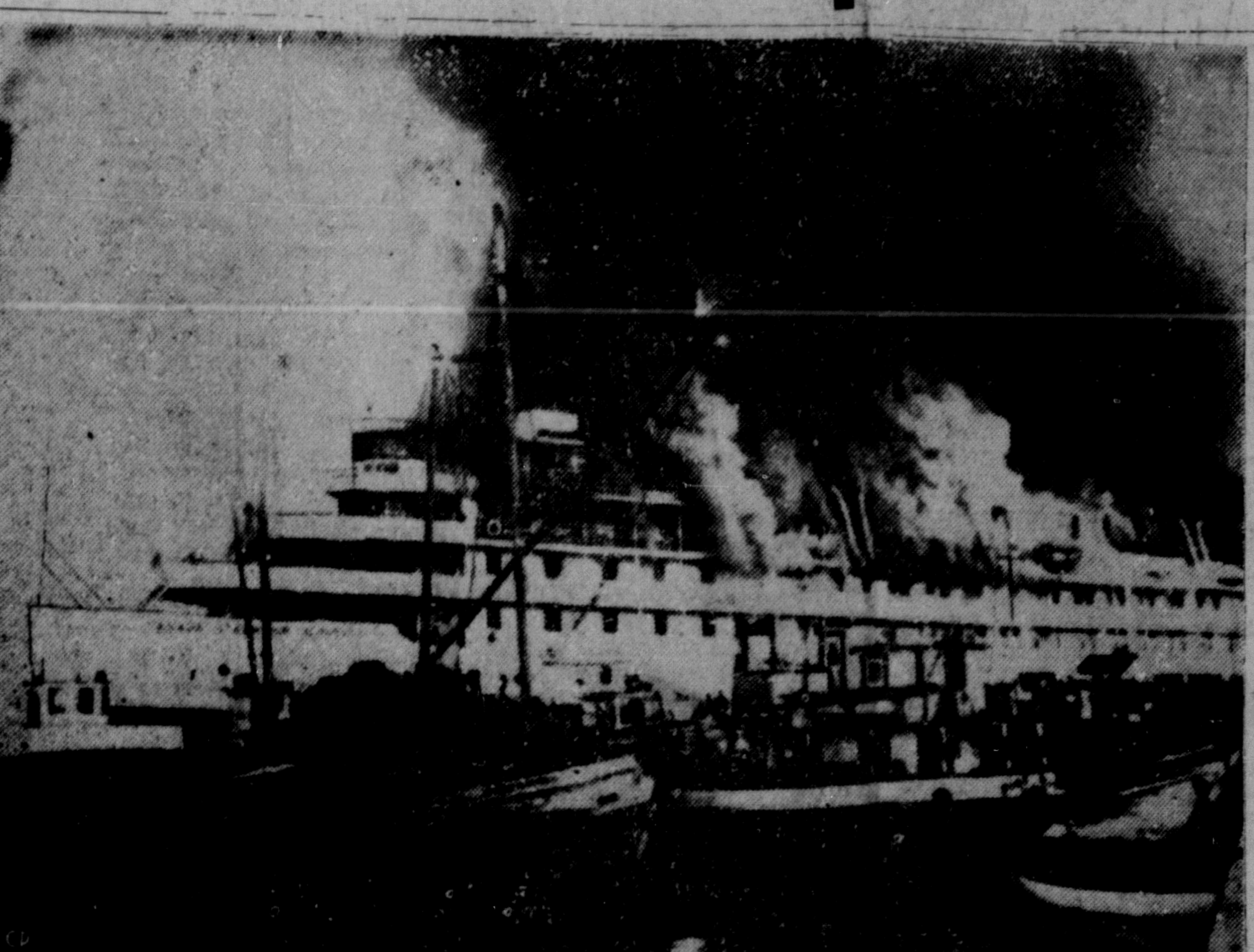
TOKYO (CP)—Three divisions of North Koreans—25,000 to 30,000 men—started a heavy attack today on the Korean central front. Drive was made down the line between Waegwan and Kunmui, fifteen miles north of Taegu, the South Korean emergency capital.

United States Forces Under Serious Threat

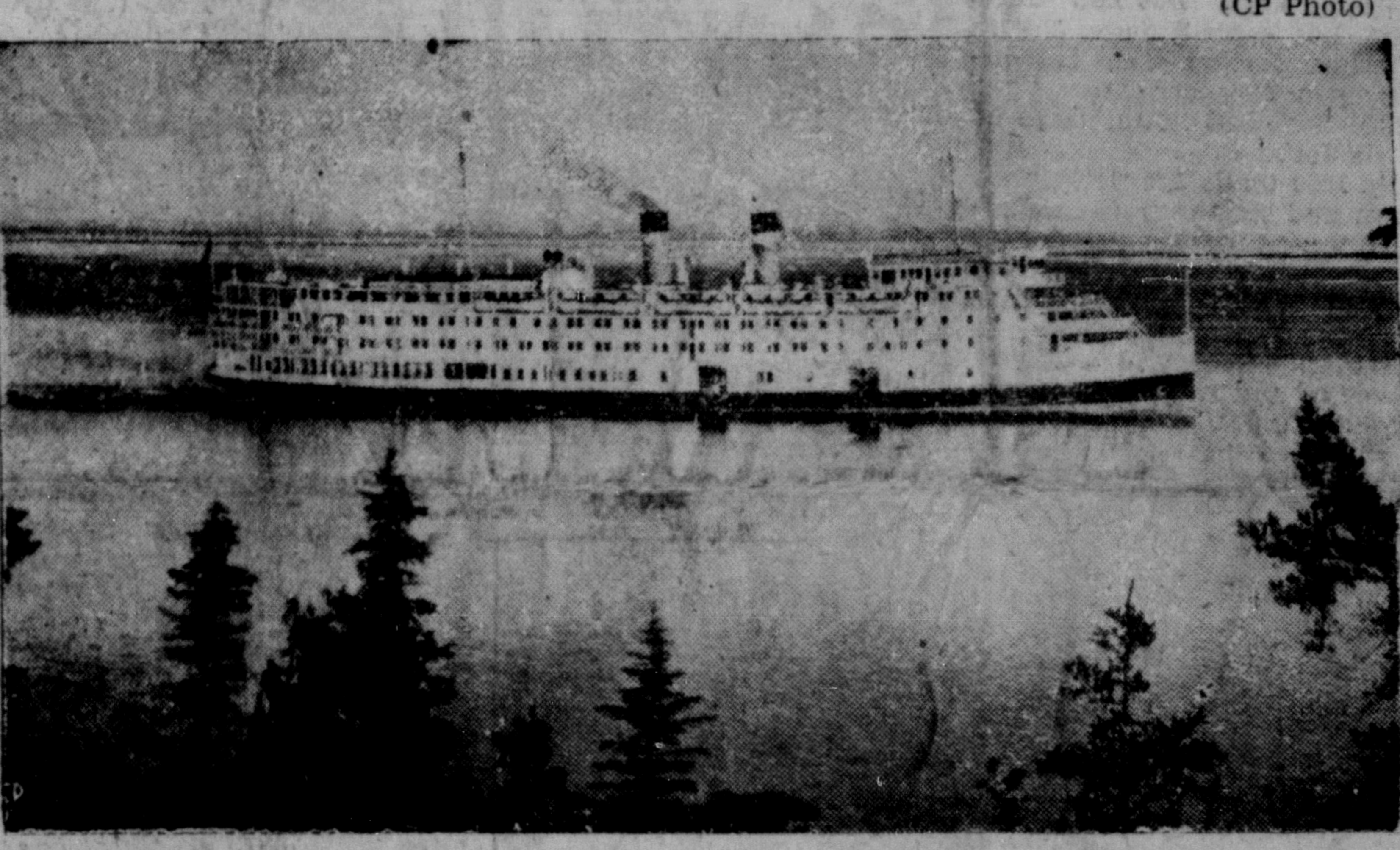
TOKYO (CP)—Three divisions of North Koreans—25,000 to 30,000 men—started a heavy attack today on the Korean central front. Drive was made down the line between Waegwan and Kunmui, fifteen miles north of Taegu, the South Korean emergency capital.

United States Forces Under Serious Threat

TOKYO (CP)—Three divisions of North Koreans—25,000 to 30,000 men—started a heavy attack today on the Korean central front. Drive was made down the line between Waegwan and Kunmui, fifteen miles north of Taegu, the South Korean emergency capital.



CRUISE SHIP BURNS — Tied to the dock at Tadoussac, Que., approximately 150 miles down the St. Lawrence River from Quebec, flames swept through the ss. Quebec, white-hulled Canada Steamship Lines cruise ship of the Saguenay-St. Lawrence routes. Fire broke out Monday afternoon while the vessel was half an hour up stream from Tadoussac. She was rushed to the north shore port where her 400 passengers and crew of 125 were removed. Five passengers are known dead. These bodies were discovered in the ship, which is a complete loss. (CP Photo)



BEFORE FIRE STRUCK — This is a photo of the Canada Steamship Lines cruise ship ss. Quebec taken during an earlier cruise. (CP Photo)

Flash

'FAILURE' JUMPS
VANCOUVER — Freeman Forbes, 49, plunged off Burrard Street bridge and was picked out of the water 80 feet below a fishing boat. When rescued, Forbes was mumbling: "I'm a failure." His condition in hospital is reported fair.

SABOTAGE IN BLAST
SAN CARLOS, Cal.—Sabotage is suspected in an explosion which did \$250,000 damage to a chemical plant here. The plant was turning out material for use in the war in Korea.

SECRET SESSION
LAKE SUCCESS — The Security Council of the United Nations was in secret session this afternoon at the request of Jakob Malik, chief of the Russian delegation.

FARMERS AND STRIKE
OTTAWA — Canadian Federation of Agriculture, representing 400,000 farmers, today declared the government should take over operation of the railways as a national emergency if the strike threatened for August 22 materializes. The Association is critical of the uncompromising attitude of both sides and points out to the Unions that farmers have to work a 60-hour week.

P.G.E. AFFECTED
VANCOUVER — J. A. Kennedy, general manager of the Pacific Great Eastern Railway, said today that a limited number of passengers could be handled on his line in spite of a railway strike. However, no freight would be handled.

BIG FLOOD IN CHINA
HONG KONG — Nearly 10,000 people in east Central China are suffering from the country's worst flood in a century. The crop loss, so vital to China's agricultural economy, is reported incalculable. Thousands of homes have been washed away, leaving more than a million people homeless.

Premier's Postponement Appeal Is Rejected By Heads Of Two Unions

FRANKFURT, Germany — Friedrich Flick, steel baron and seven other prominent Nazis, convicted of war crimes, will be freed in nine days for good conduct.

Big Nazis Are Being Freed

Mr. Moshier said that the government's offer of mediation was welcome but he saw no necessity of a postponement of the strike. There was time between now and the strike deadline for mediation. Mr. Moshier added that it had been fourteen months since the unions had made their requests of the railways.

Labor Fights Europe Army

STRASBOURG — Delegates representing Britain's ruling Labor party battled yesterday to block European Assembly action on Winston Churchill's proposal for a European army.

Identification Of Burnt Bodies Hard
TADOUSSAC, Que. — With five passengers listed as dead, Quebec provincial police still stood guard over the burned out hull of the river cruise ship Quebec, tied up at a wharf in this Lower St. Lawrence port.

Savage Storm On West Coast
VICTORIA — Reports received today from remote Vancouver Island points indicated that one man was drowned and several fishing boats were driven aground in a savage gale striking at the west coast of the island.

United States Forces Under Serious Threat
TOKYO (CP)—Three divisions of North Koreans—25,000 to 30,000 men—started a heavy attack today on the Korean central front. Drive was made down the line between Waegwan and Kunmui, fifteen miles north of Taegu, the South Korean emergency capital.

United States Forces Under Serious Threat
TOKYO (CP)—Three divisions of North Koreans—25,000 to 30,000 men—started a heavy attack today on the Korean central front. Drive was made down the line between Waegwan and Kunmui, fifteen miles north of Taegu, the South Korean emergency capital.

United States Forces Under Serious Threat
TOKYO (CP)—Three divisions of North Koreans—25,000 to 30,000 men—started a heavy attack today on the Korean central front. Drive was made down the line between Waegwan and Kunmui, fifteen miles north of Taegu, the South Korean emergency capital.

United States Forces Under Serious Threat
TOKYO (CP)—Three divisions of North Koreans—25,000 to 30,000 men—started a heavy attack today on the Korean central front. Drive was made down the line between Waegwan and Kunmui, fifteen miles north of Taegu, the South Korean emergency capital.

United States Forces Under Serious Threat
TOKYO (CP)—Three divisions of North Koreans—25,000 to 30,000 men—started a heavy attack today on the Korean central front. Drive was made down the line between Waegwan and Kunmui, fifteen miles north of Taegu, the South Korean emergency capital.

United States Forces Under Serious Threat
TOKYO (CP)—Three divisions of North Koreans—25,000 to 30,000 men—started a heavy attack today on the Korean central front. Drive was made down the line between Waegwan and Kunmui, fifteen miles north of Taegu, the South Korean emergency capital.

United States Forces Under Serious Threat
TOKYO (CP)—Three divisions of North Koreans—25,000 to 30,000 men—started a heavy attack today on the Korean central front. Drive was made down the line between Waegwan and Kunmui, fifteen miles north of Taegu, the South Korean emergency capital.

United States Forces Under Serious Threat
TOKYO (CP)—Three divisions of North Koreans—25,000 to 30,000 men—started a heavy attack today on the Korean central front. Drive was made down the line between Waegwan and Kunmui, fifteen miles north of Taegu, the South Korean emergency capital.

United States Forces Under Serious Threat
TOKYO (CP)—Three divisions of North Koreans—25,000 to 30,000 men—started a heavy attack today on the Korean central front. Drive was made down the line between Waegwan and Kunmui, fifteen miles north of Taegu, the South Korean emergency capital.

United States Forces Under Serious Threat

TOKYO (CP)—Three divisions of North Koreans—25,000 to 30,000 men—started a heavy attack today on the Korean central front. Drive was made down the line between Waegwan and Kunmui, fifteen miles north of Taegu, the South Korean emergency capital.

United States Forces Under Serious Threat

TOKYO (CP)—Three divisions of North Koreans—25,000 to 30,000 men—started a heavy attack today on the Korean central front. Drive was made down the line between Waegwan and Kunmui, fifteen miles north of Taegu, the South Korean emergency capital.

United States Forces Under Serious Threat

TOKYO (CP)—Three divisions of North Koreans—25,000 to 30,000 men—started a heavy attack today on the Korean central front. Drive was made down the line between Waegwan and Kunmui, fifteen miles north of Taegu, the South Korean emergency capital.

United States Forces Under Serious Threat

TOKYO (CP)—Three divisions of North Koreans—25,000 to 30,000 men—started a heavy attack today on the Korean central front. Drive was made down the line between Waegwan and Kunmui, fifteen miles north of Taegu, the South Korean emergency capital.

United States Forces Under Serious Threat

TOKYO (CP)—Three divisions of North Koreans—25,000 to 30,000 men—started a heavy attack today on the Korean central front. Drive was made down the line between Waegwan and Kunmui, fifteen miles north of Taegu, the South Korean emergency capital.

United States Forces Under Serious Threat

TOKYO (CP)—Three divisions of North Koreans—25,000 to 30,000 men—started a heavy attack today on the Korean central front. Drive was made down the line between Waegwan and Kunmui, fifteen miles north of Taegu, the South Korean emergency capital.

United States Forces Under Serious Threat

TOKYO (CP)—Three divisions of North Koreans—25,000 to 30,000 men—started a heavy attack today on the Korean central front. Drive was made down the line between Waegwan and Kunmui, fifteen miles north of Taegu, the South Korean emergency capital.

United States Forces Under Serious Threat

TOKYO (CP)—Three divisions of North Koreans—25,000 to 30,000 men—started a heavy attack today on the Korean central front. Drive was made down the line between Waegwan and Kunmui, fifteen miles north of Taegu, the South Korean emergency capital.

United States Forces Under Serious Threat

TOKYO (CP)—Three divisions of North Koreans—25,000 to 30,000 men—started a heavy attack today on the Korean central front. Drive was made down the line between Waegwan and Kunmui, fifteen miles north of Taegu, the South Korean emergency capital.

United States Forces Under Serious Threat

TOKYO (CP)—Three divisions of North Koreans—25,000 to 30,000 men—started a heavy attack today on the Korean central front. Drive was made down the line between Waegwan and Kunmui, fifteen miles north of Taegu, the South Korean emergency capital.

TODAY'S STOCKS

(Courtesy S. D. Johnston Co. Ltd.)

Vancouver	
Bayonne	.02
Bralorne	6.60
B.R. Con.	.02 1/2
Cariboo Quartz	1.92
Hedley Mascot	.25
Pend Oreille	7.30
Pioneer	2.35
Premier Border	.02 3/4
Privateer	.09
Reeves McDonald	3.30
Sheep Creek	1.12
Silbak Premier	.30
Taku River	.05
Vananda	.12 1/2
Salmon Gold	.05
Silver Standard	2.05
Western Uranium	.70
Toronto	
Athona	.99
Aumague	.18
Beattie	.42 1/2
Bevcourt	.36
Bobbo	.10 1/2
Buffalo Canadian	.15
Consol. Smelters	110.50
Conwset	1.54
Donalds	.40
Eldona	.25
East Sullivan	6.85
Giant Yellowknife	6.55
God's Lake	.31
Hardrock	.31
Harricana	.08
Heva	.05 1/2
Hosco	.06 1/2
Jackknife	.04 1/2
Joliet Quebec	.44
Lake Rowan	.07 1/4
Lapaska	.03 1/2
Little Long Lac	.35
Lynx	.22
Madsen Red Lake	2.05
McKenzie Red Lake	.39
McLeod Cockshutt	1.97
Moneta	.27 1/2
Negus	1.01
Noranda	69.15
Louvicourt	.16
Pickle Crow	1.75
Regcourt	.05 1/4
San Antonio	2.49
Senator Rouyn	.21 1/2
Sheriff Gordon	2.20
Steep Rock	3.40
Sturgeon River	.15
Silver Miller	.82
Upper Canada	1.83