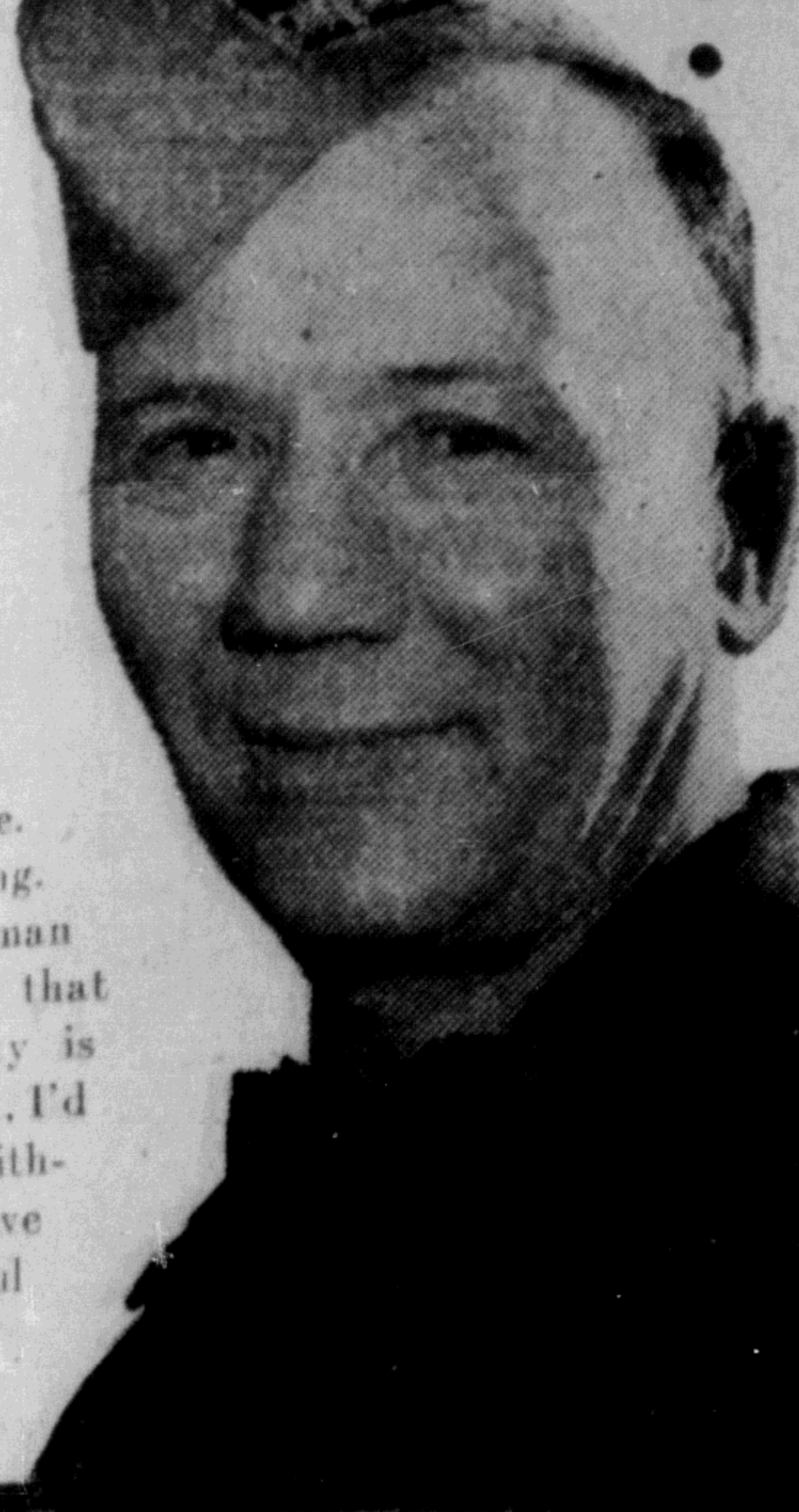


business for myself"



Charles Little, Independent Chevron Dealer of Quilicum, is one of the more than 300 service station operators who have chosen to market Standard of B.C. products.

STANDARD OIL COMPANY OF BRITISH COLUMBIA LIMITED
Marine Building, Vancouver, B.C.

Charles Little, Independent Chevron Dealer of Quilicum, is one of the more than 300 service station operators who have chosen to market Standard of B.C. products.

EXPERT RECOMMENDS (Continued from page 1)

ucts have been tested in use all over the world.

"In regard to the initial cost, I don't think you have anything to fear from British equipment. A large part of the cost of manufacture is in labor and British wage scales are much lower than over here."

Mr. Langland said that his company could guarantee delivery within 18 months and that because of the British need for dollars, parts and supplies depots for equipment are being set up in Canada.

In answer to a question by Alderman Casey as to the practicability of operating an automatic system with "less than 6,000 or 7,000 subscribers, Mr. Scowcroft said that automatic

Timely Topics from Terrace

Mrs. C. R. De Kergonmeaux, Terrace Reporter

The weather in Terrace is mild and very spring-like and the warmth of the sunshine is something to be enjoyed by all who

felt the chill of the strong March winds last week. The snow has at last disappeared from the town streets and the grader is starting its yearly job on the roads. Work will soon recommence on the water line. Work on the Infirmary is going ahead and there is a great deal to do there before it will be ready for occupancy.

Miss Muriel Vance of Prince Rupert is a visitor in Terrace.

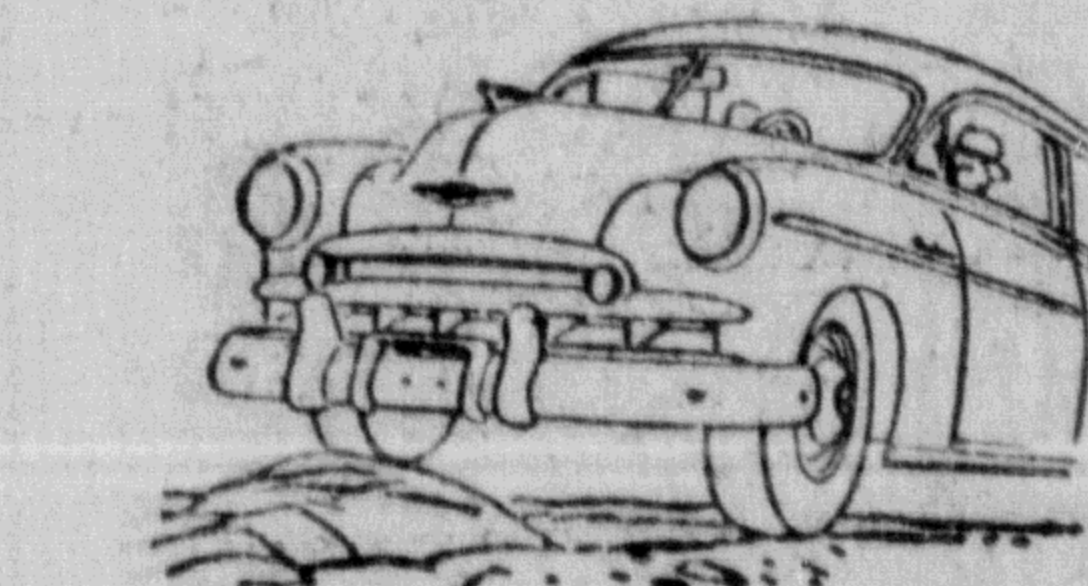
Steve Obzoro and Pat Johnson left on Tuesday morning's train for Prince George and will return by car.

Mrs. W. Christy was one of the entertainers at the Catholic Women's League card party on St. Patrick's Day in the Orange Hall, contributing Irish solos.

HOSPITAL AT TERRACE BUSY

The Red Cross Outpost Hospital, which was opened at Terrace on March 16, 1948, has had, since that time, a total number of 2,755 hospital days with 327 admissions. Operations have numbered 107, x-rays 50, births 44, out-patients (to December 31, 1948) 231. Two doctors have been in attendance, a staff of six graduate nurses and under-staff of 4. There are 10 beds, one isolation, and four cots.

Well-baby clinics are held monthly at the hospital and a great number of the young mothers take advantage of this service.



AUTO SHOW

TERRACE CIVIC CENTRE

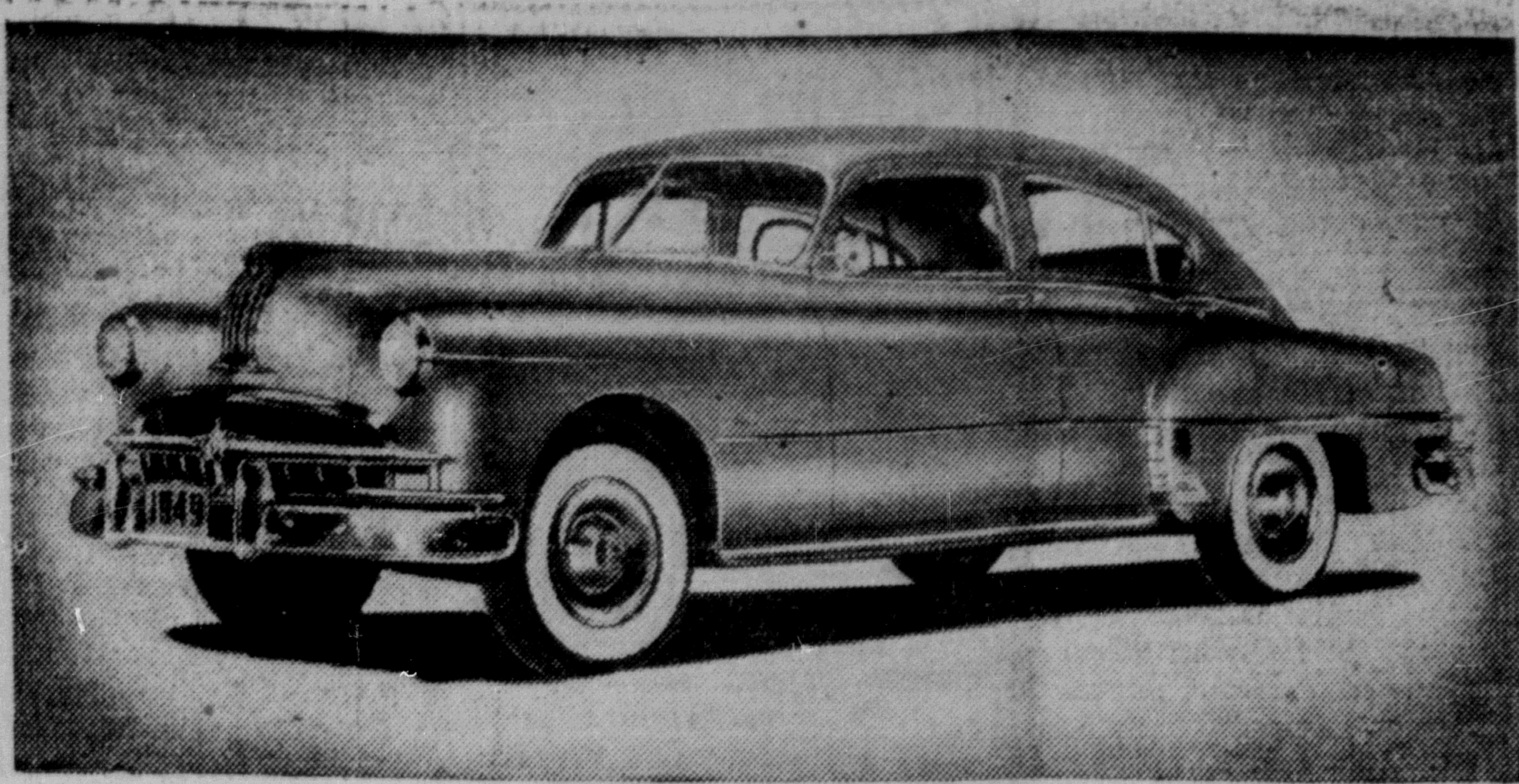
SATURDAY AND SUNDAY

2-5 p.m. 3-5 p.m.

The Concert Orchestra will play from 3-4 p.m. Sunday.

Mrs. H. Seton, soloist

TERRACE MACHINE SHOP AND GARAGE



THE NEW 1949 PONTIAC was shown to 1000 people in Civic Centre last night. Shown here is the Streamliner four-door sedan, on 120-inch wheelbase with a six or eight-cylinder engine. Completely redesigned, the 1949 Pontiac offers an entirely new concept of functional beauty. They are wider and lower than any model yet offered in the Pontiac line.

AUTO SHOW ATTRACTS ADMIRING CROWD OF THOUSAND CIVIC CENTRE

Doug Frizzell, assisted by his staff of Long Motors, welcomed a thousand or more interested friends at the spacious auditorium of the Civic Centre last night on the occasion of the first full-scale automobile show which has been held not only in Prince Rupert but anywhere in British Columbia

since the war. The display, attractively arranged on the floor of the big assembly hall, featured four of the brand new 1949 streamline Silver Streak Pontiacs and one Chevrolet Aero Sedan.

By opening time at 7:30 a large crowd had gathered and for three-and-a-half hours after the venerable George Frizzell had cut the ribbon at the auditorium door in the one formality of the evening, the interested visitors circulated through the hall to inspect the five beautiful vehicles. They were the admiratory cynosure of all and, doubtless, many a possessive impression was resolved.

The five cars, so that the surprise of the initial reviewing might be complete, had been quietly delivered to the auditorium by dead of night and, before the show opened, not half a dozen people had seen them.

Parts and accessories were also on display and the whole floor scene was an attractive one. Baskets of flowers adorned the floors and from the ceiling were suspended silken banners with appropriate texts. Around the walls were General Motors signs and emblems.

From the spacious stage, the backdrop of which was emblazoned with the single big letters "G. M.", the Shrine Club's Prince Rupert City Band under the leadership of Peter Lien, dispensed an excellent program of incidental music of the lighter and spirited type.

The Pontiacs were two four-door sedans, one two-door town sedan and one two-door aero sedan.

The visitors to the show found in the new 1949 Pontiac a completely restored motor car with new concepts of functional beauty distinguished by ultra-styled over-all pattern.

The Fleetleader Series offer (Special or Deluxe) sport coupe, 2-door sedan, 4-door sedan, 2-door sedan coupe, 4-door sedan coupe and business coupe (Special only) with the six-cylinder engine.

MASSIVE GRACE

A direct front view of the 1949 Silver Streak Pontiac depicts massive grace and unity of design. A novelty is the dual bumper effect, created by the massive central grille bar high-

lighting the radiator grill ensemble.

Tucked neatly between the tips of the central and lower grille bars, the parking lamps add a distinct touch of functional beauty. The grill is substantially protected by a pair of graceful, chromed bumper guards.

In silhouette, the new Pontiac appears lower and heavier. The contour of the front fender skirts has been carried straight back to the rear fenders. Lowering of the hood and roof lines by two and one-half inches accents the litheness.

As the style feature, rear fenders are formed integral with rear body panels, eliminating the joint between wheelhouse and fender, and presenting a much trimmer appearance.

Definite applications of chromium trim to all models adds sparkle and personality to the new Pontiacs.

Pontiac's new styling sweeps back to enclose a generous luggage compartment. A massive rear bumper curls forward to protect rear fender skirts. Rear deck appearance is enhanced by the retention of the dual semaphore type tail lamps with chrome plated circular rims.

New for 1949 are the outside push button type door locks on both front doors. To open, a light push on the latch and direct pull on the handle is all that is required.

The 1949 Pontiac interiors offer generous elbow room, leg room and head room. Because front seats are two and one-half inches wider and windshield width increased five and one-half inches, the steering wheel has been moved out two inches farther from the center of the car, thus giving ample room for the driver and additional space for the front seat passengers. Entrance room has been substantially increased to provide comfortable access to front and rear compartments.

Instrument and controls are grouped directly in front of the driver and centred on the steering column. Dials of all instruments are recessed and tilted to the driver's line of vision. A new push-button starter switch is mounted on the dash to the left of the steering column. The

Save Money on Meals!

a plate of
4 delicious nourishing
AUNT JEMIMA PANCAKES
for less than 5¢



EASY AS 1-2-3 TO FIX!

- Add milk or water.
 - Stir.
 - Pop 'em on the griddle.
- Get Both Kinds The red box for fluffy light PANCAKES and WAFFLES, the yellow box for "taste-tingin'" BUCKWHEAT CAKES. Reg. Size or 3 1/2 lb. ECONOMY Bag.

Send for
AUNT JEMIMA'S FREE RECIPES!

Learn how to make better pancakes, waffles and other taste-tempting dishes with Aunt Jemima Ready-Mix. Mail your request today to Aunt Jemima, c/o The Quaker Oats Company of Canada Limited, Box 100, Peterborough, Ont. or Saskatoon, Sask.

GOOD FOR YOU — DIGESTIBLE AS TOAST!

Prince Rupert Daily News
Thursday, March 24, 1949

IT'S A HEAVY DATE—To keep from overtaxing the nerves, this young lady suggests that Mr. and Mrs. J. Q. Public get going right away on their income tax reports. Even if they use the short form, it won't be long now—April 30, to be exact, is the last day for filing.

INCOME TAX RETURN DUE NOT LATER THAN APRIL 30TH



Mrs. E. Campbell, who has been visiting here with her son-in-law and daughter, Dr. and Mrs. A. W. Large, is sailing tonight on the Prince Rupert enroute back to her home in Toronto.

ed with equal interest and was found to present new lines, equipment and refinements similar along modified lines to the Pontiac.

**Taxes Reduced
Prices Reduced**

on

ANNE'S

210 FOURTH STREET



HOME MADE CANDY

Is it your breakfast that's wrong?



"Galt" Gal says "Mighty Handy"
"I find Post's Grape-Nuts mighty handy" writes a young lady from Galt, "not only for breakfast, but in all kinds of blanching and as toppings for cream pies."

GALS EVERYWHERE—look this message over. It's built on plain but important facts. Something for your good. How your folks can benefit.

Why Breakfast is Specially Important to YOU

A good breakfast gets you off to a good start for the day. Hard work ahead? At home? At business? Take the nutritionist's tip. (They know.) For mental alertness, getting things done, that first meal of the day is important. Why? Because, for those who eat no breakfast or a poor one, results are fatigue, irritability, lessened efficiency.

Why Grape-Nuts is a Special Breakfast Cereal

Just two tablespoons of delicious Grape-Nuts provide the cereal share of a good breakfast. Golden kernels of whole wheat and malted barley... good... good... good. Fine food values too, because of useful quantities of carbohydrates, proteins, minerals you need. Grand flavour-lift with milk or cream. Grape-Nuts help you to healthful, economical breakfasts.

Post's Grape-Nuts

