

HE YOU
Clear, sparkling, beautiful! See them all... you'll want your own

Blue River
Wedding RING

Blue River
Wedding RING

Blue River
Wedding RING

Blue River
Wedding RING

Blue River
Wedding RING

Blue River
Wedding RING

Blue River
Wedding RING

Blue River
Wedding RING

Blue River
Wedding RING

Blue River
Wedding RING

Blue River
Wedding RING

Blue River
Wedding RING

Blue River
Wedding RING

Blue River
Wedding RING

Blue River
Wedding RING

Blue River
Wedding RING

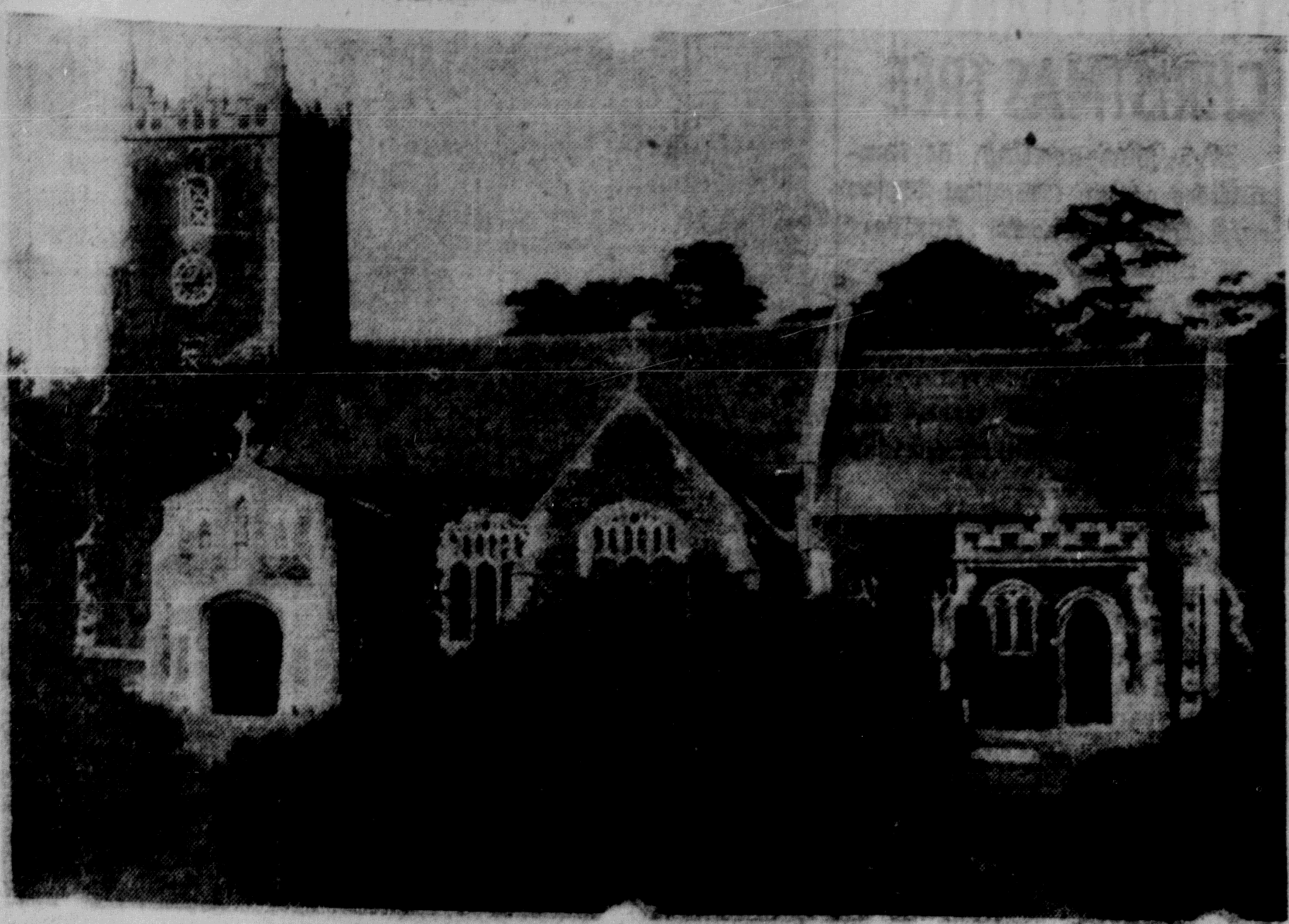
Blue River
Wedding RING

Civic Centre

Dates

FRIDAY (Sports)
9:00—Bo Me Hi Gym Class
9:30—King Edward School Class
10:00—Rup-Rec Jr. Girls
10:30—Rup-Rec Teen Age Boys
(Basketball Practices)
4:00-10:00
(Special)
4:00—Teen Age Girls Craft Group
8:00—Rotary Club Chorus
8:30—Mixed Adult Card Party
8:00—Camera Club (Teen)
8:15—Little Theatre Plays

Daily News Classified Ads get Quick Results!



ROYAL BABY MAY BE CHRISTENED HERE—A view of the Church of St. Mary Magdalene, on the royal estate at Sandringham, London, which may be chosen for the christening ceremony of Princess Elizabeth's baby.

CFPR Radio Dial

1240 Kilocycles (subject to Change)

THURSDAY P.M.
4:00—Tony the Troubadour
4:15—Stock Quotations and Interlude
4:30—Stories of Adventure
4:45—Easy Listening
5:00—The Happy Time
5:30—Hawaiian Echoes
5:45—Platter Parade
6:00—People Ask
6:15—King Edward School Bdc.
6:30—Musical Varieties
6:45—Smoke Rings
7:00—CBC News
7:15—CBC News Roundup

FRIDAY A.M.

7:00—Musical Clock
7:45—Singing Sam
8:00—CBC News
8:15—Morning Song
8:30—Music for Moderns
8:45—Little Concert
9:00—BBC NEWS
9:15—Morning Devotions
9:30—Morning Concert
9:50—Time Signal
10:00—Morning Visit
10:15—Morning Melodies
10:30—Round-up Time
10:45—Scandinavian Melodies
11:00—Let's Play
11:15—Hit Songs of Yesterday
11:30—Weather Forecast
11:31—Message Period
11:38—Rec. Int.
11:45—Famous Voices

P.M.

12:00—Mid-day Melodies
12:15—CBC News
12:25—Program Resume
12:30—B.C. Farm Broadcast
12:55—Recorded Interlude
1:00—Symphony Hour
1:30—Bernie Braden Tells a Story
1:45—Commentary and Talk
2:00—National School Bdc.
2:30—Musical Program
2:45—Western Five
3:00—Ethel and Albert
3:15—Spotlight On a Star
3:20—Sketches in Melody
3:30—Divertimento

HOTEL ARRIVALS

J. E. Rollins, Vancouver; R. Pethick, Victoria; C. D. Clee, Vancouver; W. James, Vancouver; T. C. Harrison, Victoria; G. W. Wilde, Vancouver; D. Candow, Vancouver; E. Johnson, Vancouver; H. D. Reid, Vancouver; Miss B. Rogers, Victoria; Mr. and Mrs. S. Oddson, Osland; J. Stedman, Hollyburn; Mrs. N. Booth, Sandspit; L. S. Chester, Montreal; M. A. Fougner, Ocean Falls; A. M. Harvey, Ocean Falls; L. Moore, Vancouver; L. S. Houghton, Vancouver; T. J. Collins, Vancouver; J. R. Denholme, Ocean Falls; B. Seidenman, Ocean Falls; J. Ross, Montreal; J. Easton, Ocean Falls; W. Brown, Ocean Falls; E. L. Deller, Ocean Falls.

TENDERS

SEALED TENDERS addressed to the undersigned and marked "Tender for Buoy Tender for Prince Rupert" will be received from Canadian Pacific Coast Shipbuilders, up to 12 o'clock noon, Friday, December 31, 1948 for the construction of a Lighthouse Supply and Buoy Tender Vessel for Prince Rupert, B.C. Length Overall 150', Breadth 30', Depth 13'6". Plans, specifications, labour conditions and form of tender in the matter may be obtained by bona-fide shipbuilders on the Canadian Pacific Coast, capable of carrying out the work on application to the Agent, Department of Transport, 1002 Wharf St., Victoria, B.C. Each tender must be accompanied by a security deposit to the amount of 5% of the total amount of the tender, such security to be in the form of a certified cheque on a chartered Canadian bank, made payable to the order of the Receiver General of Canada, and/or Dominion of Canada Bonds, at par, and/or Bonds of the Canadian National Railway Company or its subsidiary companies unconditionally guaranteed by the Dominion of Canada, at par. Such security will be forfeited in the event of the tenderer refusing to enter into a contract on the basis of his tender, if called upon to do so, or failing to satisfactorily complete such a contract. Security deposits of unsuccessful tenderers will be returned. The Department does not bind itself to accept the lowest or any tender.

LAND AOT

Notice of Intention to Apply to Lease Land

In Land Recording District of Prince Rupert, B.C. and situated in the channel of the Skeena River adjacent to Indian Reserve No. 66, at the mouth of the Skeena River.

TAKE NOTICE that the Columbia Cellulose Company Limited of Prince Rupert, B.C., occupation manufacturer of cellulose pulp and products intends to apply for a lease of the following described lands: Commencing at a post planted approximately 2590 feet N. 27 degrees W. of the S.W. corner of Indian Reserve No. 66 at the confluence of the Skeena and Skeena Rivers thence N. 40 degrees E. approximately 4000 ft. thence easterly and N. westerly following the high water line of the Skeena River, approx. 450 ft. thence S. 40 degrees W. approx. 4480 ft. thence 16 degrees northerly approximately 320 ft. to the point of commencement and containing twenty-five acres, more or less.

T. A. V. TREMBLAY, Dated November 19th, 1948.

FESTIVAL PLANS ARE PROGRESSING

Program Plans for Next Year's Drama and Music

Peter Lien, with the assistance of Mrs. E. Smith, Mrs. George Mead and Miss Jean Urhart, has completed a preliminary outline of the program for next year's music division of the Prince Rupert Drama and Music Festival.

While details have yet to be worked out, indications are that the May festival will have considerable more variety than the initial one held early this year. Piano solos and duets will be a new feature and it was suggested by the advisory committee that the solos in this class be made competitive. It is hoped that there will be enough interested violinists to warrant introducing a number of violin solos in non-competitive classes. The committee have also drawn up tentative plans for teams consisting of soloists and accompanists to enter the festival where they will be in non-competitive classes and judged as a team.

Vocal solos will be introduced at the next festival as part of the regular program. Adult choirs and choruses will be given every encouragement to take a part in the festival and of course there will be the school choirs and rhythm bands which made up the major part of the program last year. Aside from the piano solos, the only other competitive class suggested by the committee, was junior choirs outside of the schools.

In most musical classes in the festival, except where rhythm bands are concerned, there will be one piece of music selected for each class with the second number left up to participants. The drama section of the festival has not been dealt with by the executive as yet but classes are expected to be similar to that of the first festival.

Last night's meeting was held in the Civic Centre with the president of the festival committee Richard Cleland, in the chair.

TOO LATE TO CLASSIFY

FOR SALE—One all steel flat Restmore spring and brown enamel bedstead. Price \$15. Red 505. (2)

"SALADA" TEA

Outstanding Quality • Delicious Flavour

Timely Topics from Terrace

Mrs. C. R. De Kergommeaux, Terrace Reporter

A meeting of the Hospital the New Year's Eve Cabaret, the Fund was called at the local first of its kind to be held in hospital on Sunday afternoon Terrace.

for the purpose of forming a hospital auxiliary but it was decided to postpone the meeting until next Sunday when there should be a better representation of the community. The hope was expressed that an auxiliary will be formed from those whose time is not taken up with other organization work although all comers will be welcomed to join and give their services.

Mrs. G. Hipp returned from Prince George last Thursday where she attended the wedding of Sheila McKenney's and Douglas Keller on Tuesday.

Mrs. Welch has arrived from the south to visit with her daughter and son-in-law, Mr. and Mrs. D. G. Little.

Sgt. T. D. Brunton, provincial police, Smithers, is in Terrace on official business.

The Civic Centre executive met at a Silver Tip luncheon on Tuesday afternoon and there was a full attendance. The ground work was covered for brings results.

CREAM-STYLE CORN
...Grand for feeders too!
ROYAL CITY
GOLDEN BANTAM CORN
ROYAL CITY
CANNED FOODS

Take your choice...

of our lovely merchandise and make a small deposit. When it is convenient you may pick up your selection and arrange for payments through our PERSONALIZED BUDGET PLAN. No Interest—No Carrying Charges.

Among our many lines of ladies' wear you may be especially interested in:
BLOUSES, SLACKS, TWIN-SET SWEATERS
SKIRTS, plain or fancy
EVENING GOWNS, DRESSES, HOUSECOATS, SUITS, TOPCOATS and HATS

If you are Gift Buying, examine our displays of **UMBRELLAS, HANDBAGS, GLOVES, STOCKINGS and LINGERIE.**

Elizabeth Arden
Blue Grass in the Christmas Air
Christmas carries fragrances: crisp wintry air, spicy scent of pine. Add Blue Grass Flower Mist, famed fragrance by Elizabeth Arden. It's a wonderful gift, in a gay gift-wrapping, with a Kentucky-caught scent, to take the Christmas air!

FLOOR COVERING
Just received a large shipment of excellent patterns in linoleum by the yard and rugs. Drop in and see the display in our basement department.
Gordon's HARDWARE
McBride St. Phone 311

Sweeten SOUR STOMACH
With **PHILLIPS** MILK OF MAGNESIA TABLETS
Mint Flavored

Barbara Buys and Whys

MONTRÉAL, Nov. 25th—An enthusiastic friend of mine has just made a happy house-keeping discovery. I gave her my tin of GILLETT'S DRAIN CLEANER to let her see for herself what magic it works with slow-running drains. She says it's her favourite time-saver... just two tablespoons a week of Gillett's Drain Cleaner in her drains keep them fast-running and sediment-free. Then basin and tub cleaning is so much easier—goes much faster, for there's no "after-wash film" when drains run freely. Yes, weekly use of Gillett's Drain Cleaner saves time, trouble and plumber's bills. It acts faster—costs less!

Here's the Perfect Answer to those "difficult" mealtimes when Junior refuses his food! No need to fuss, bother or bribe your baby—just give him a scrumptious bowlful of 5 Minute "CREAM OF WHEAT"—almost a meal in itself! And to make it "extra nice" add 1/2 cup of raisins, figs, dates, apricots, or prunes to the "Cream of Wheat" while it's cooking. So very good... and so good for baby, too. You see, 5 Minute "Cream of Wheat" contains blood-enriching iron... and it provides extra Calcium and Phosphorus for diets deficient in these elements. What's more—it cooks to "baby-ready" digestibility in just five minutes of boiling. That's why so many mothers put "Cream of Wheat" at the top of their shopping lists regularly!

Make This Christmas the Merriest Yet for your youngsters! Fill their stockings with Walt Disney Character Inflatable Toys of VINYLITE Plastic made by Haugh! They're colour-fast and water-proof so the wide-eyed expression on Pluto's face stays as endearingly goopy as the day you bought him. Your youngsters will love these inflatable toys with the self-sealing valves that make them easy to blow up and keep that way. There's a Donald Duck, of course... and a ball with Donald and Pluto on it... there's a Santa Claus and there are place mats to help your little girl set a perfect table! Look for Walt Disney Educational Toys of Vinylite Plastic at better stores everywhere!

For Dessert Enjoyment... party time or any time... an ice cream sundae rates tops! Especially when the sauce, like this Fudge Sundae Sauce, has the superb extra rich, extra mellow chocolate flavour of that finest of cocoa-making BAKER'S COCOA. Many years of cocoa-making experience stand behind the quality of this fine product... and make it the best for all cocoa purposes.

FUDGE SUNDAE SAUCE
1 cup Baker's Cocoa
1/2 cup sugar
Dash of salt
1 cup corn syrup
1 cup hot water
1 tablespoon butter
Mix together cocoa, sugar, salt. Add corn syrup and water gradually, stirring until smooth. Cook and stir over low heat until mixture boils. Continue boiling, without stirring, until mixture thickens and a small amount forms a jelled mass in cold water (225 deg. F.). Remove from heat. Add butter. Makes 1 1/2 cups. This is a thick fudge sauce, excellent for ice cream.

Add the Spice of Variety to many a meal—this easy, easy way! Give favourite dishes flavour variety and a "party look" with SHIRRIF'S FLAVOURING EXTRACTS AND FOOD COLOURS! Add a few drops of Shirrif's Fruit Flavours for any fruit missing from a fruit cup—liting juice with one of Shirrif's Food Colours. Sounds delightful, doesn't it? Just wait 'til you serve it to "Oh's" and "Ah's" of admiration! And once you've made a success with this simple but oh, so effective dish, you'll want to try more Shirrif's "magic". Add exciting flavour to your own, delicious, homemade ice cream like this—to vanilla ice cream add Shirrif's True Vanilla—to caramel add Rum—to chocolate add Mint! Ask your grocer to-morrow for Shirrif's Flavours and Food Colours!

Here's a Holidaytime Note to make to yourself. When you're housecleaning for Christmas, it's a good thing to know that curtains stay cleaner longer when they're starched with LINIT! It takes so little time to keep curtains fresh-looking the easy Linit way! You see, Linit is a fine, penetrating starch that makes ironing easier. And it's a fine, penetrating starch that makes such a cheerful difference in your home. Ask for Linit at your grocer's to-morrow... "be prepared" for the festive season!

MEN'S & BOYS' CLOTHES & SHOES

See us First IT WILL PAY YOU!

- Boys' Long Pants, all-wool, reg. \$5.00, all sizes \$3.50
- Boys' All-wool Pullover Sweaters, all sizes, from \$1.30
- Boys' Shirts, long sleeves, all sizes \$1.25
- Boys' Dress Shirts, all sizes \$1.45
- Boys' Rubber Lace and Knee Boots, all sizes, from \$2.00
- REAL BARGAINS FOR MEN!**
- Men's All-wool English Gabardine Coats, tailor-made, reg. \$44.50, Now \$30.00
- Men's Top Coats, dark brown shade, perfect fit, Now \$22.00
- Men's Dress Pants, all kinds to choose from, from \$4.75
- Men's All-wool Fishermen's Pants, all sizes \$5.50
- Knitting Wool, 3-ply, best quality, reg. 40c, Now 30c
- Ladies' Umbrellas, reg. \$4.00, Now \$2.95

B.C. CLOTHIERS LTD.
3rd Avenue
Since 1930

TERRACE
Skeena Restaurant
TERRACE
LLOYD SAUDER, PROPRIETOR
• GOOD FOOD • GOOD SERVICE
Open 6:30 a.m. till midnight. Closed 9 p.m. Sundays
DINE AND DANCE
Bring your friends and enjoy yourselves
AFTERNOON TEAS 3-TELL 5