

BACK-TO-SCHOOL DRESSES \$2.25 AND UP

Wallace's school girls' clothes department is now bursting forth with popular low-priced school girls' clothes of all kinds

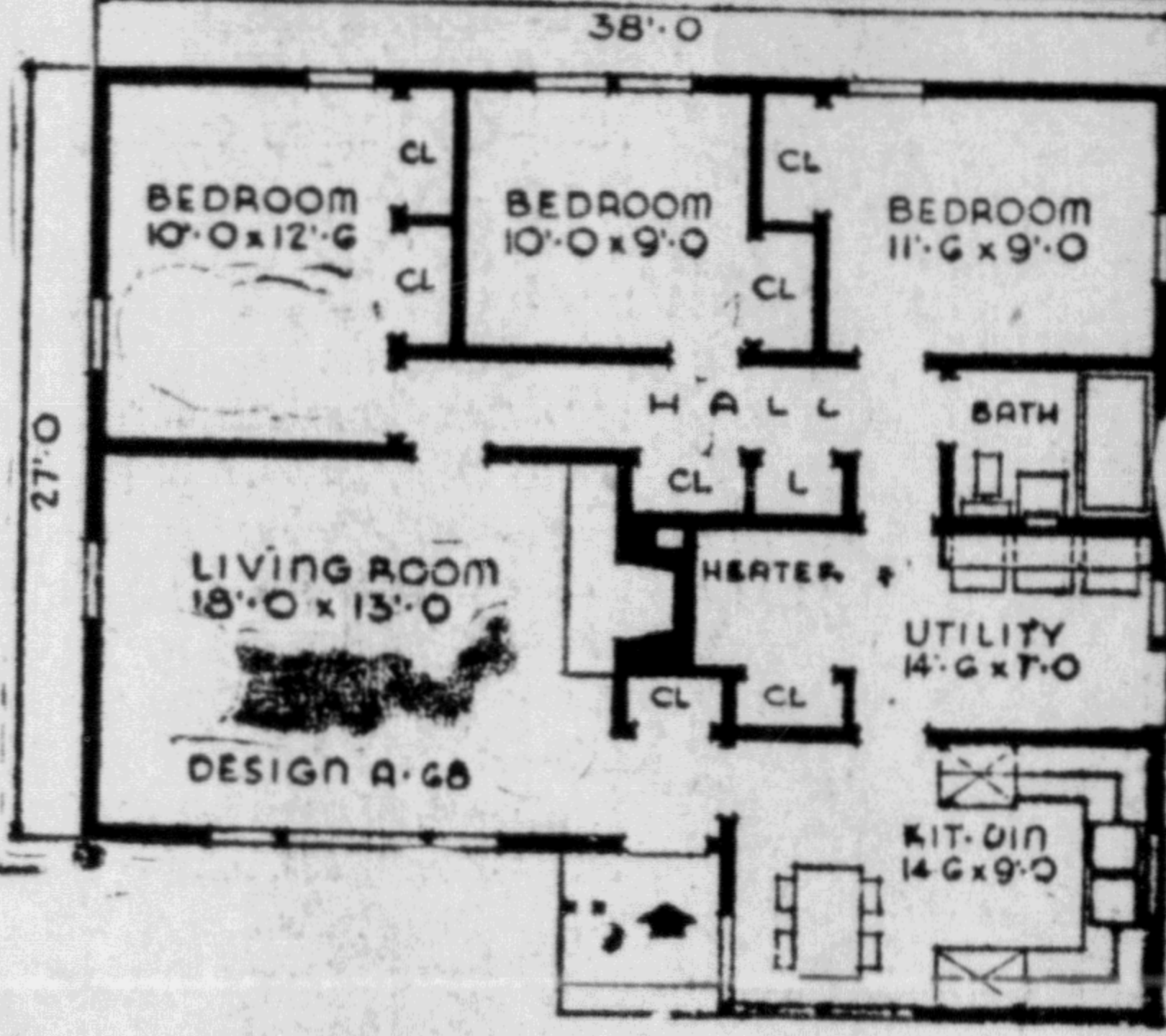
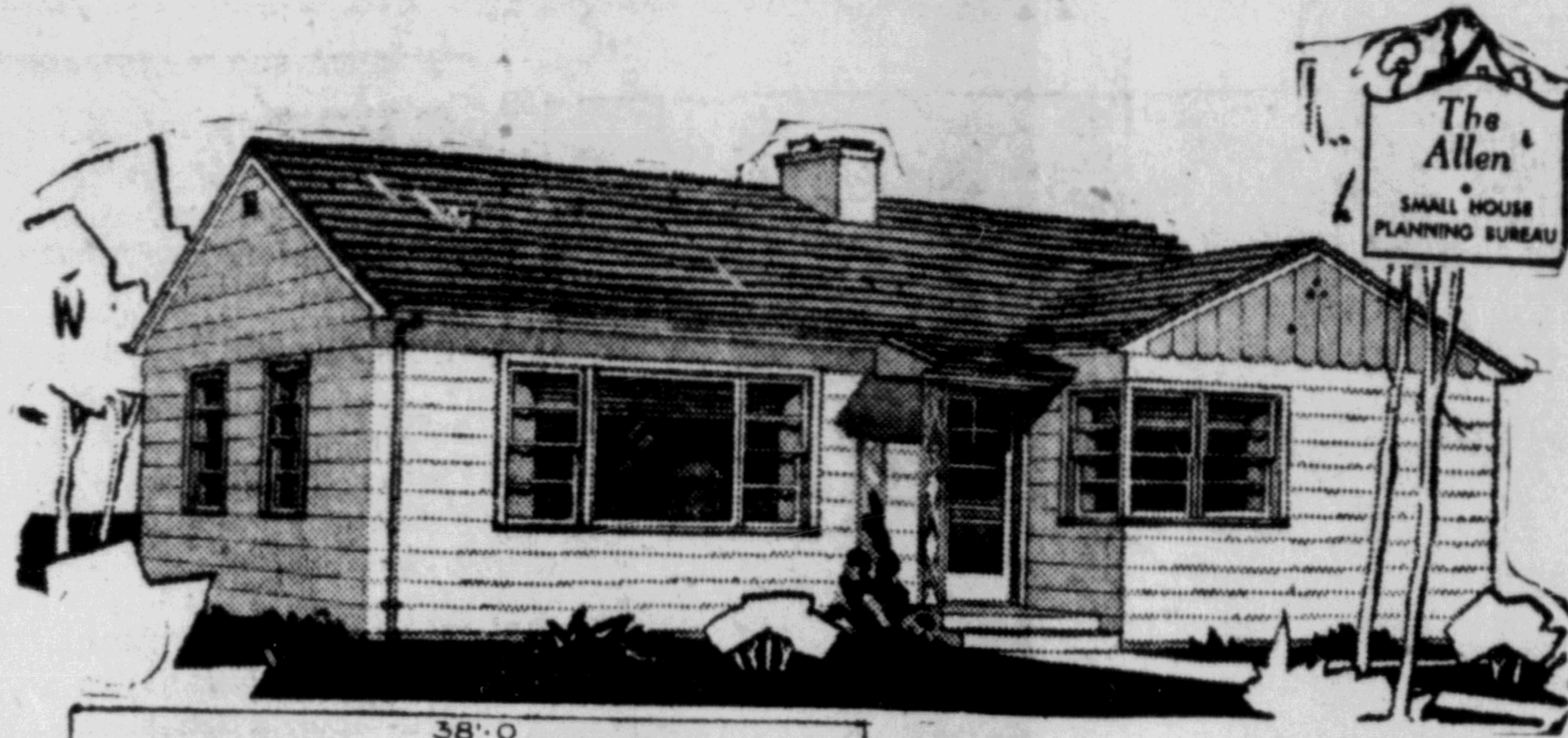
WALLACE'S
Of Course



SWEET-TOOTH WASPS

NORWICH, England (P)—Plum trees and gooseberry bushes in Suffolk and Norfolk are being attacked by swarms of wasps which are ruining the fruit before it is ripe. Some growers report that their trees of early plums have been stripped.

NEW DELHI (P)—The Indian government has established a directorate-general of shipping. Arthur S. Lal, formerly Indian trade commissioner in London, has been appointed to the post to deal with seamen's welfare, maritime conventions, shipping corporations and lighthouses.



THE ALLEN is basementless, with the floor slab, easily adaptable to linoleum or other composition flooring, laid directly on a gravel fill. The heating plant and laundry equipment are in a utility room which replaces a basement.

Plumbing, for the bathroom, and laundry equipment is in the same wall. Location of the fireplace makes the same chimney available for the heating unit.

Storage space is liberally allowed for in each of the three bedrooms and closets are planned for the front entrance and utility room. A general closet and linen cabinet are in the bedroom hall.

The exterior walls are shown to be of frame with wide siding. But, concrete blocks can be used as a substitute. The roof is covered with asphalt shingles.

The kitchen of The Allen is modern with cabinets and equipment arranged in a U-shape. The sink is under the window and the refrigerator and range are completely built into the cabinets.

Dimensions of The Allen are 38 feet by 27 feet with an area of 1,110 square feet and a volume of 13,320 cubic feet.

CONVICTED ON LIQUOR CHARGE

Harold Beam, proprietor of the Skeena Inn at Port Essington was fined \$50 and costs following his conviction by Magistrate H. F. Glassey here Thursday afternoon for an infraction of the Government Liquor Act.

The prosecution followed an investigation on August 12 by Constables Edward Anderson and George Redhead who visited the Skeena River village on the police boat P.M.L. 15. Beam was charged with permitting persons to be in the beer parlor of the hotel after 11:30 p.m., the regulation closing time.

Constable Redhead, who was on temporary duty with the P.M.L. 15, told the court that he had seen a group of persons in the premises at 12:45, 15 minutes after the closing hour. The accused, he said, exchanged some money during that time.

Constable Redhead's testimony was corroborated by Constable Anderson.

The prosecution was conducted by Constable Anderson. A. Bruce Brown acted for the defence.

PRINCE RUPERT BOY IS DENTIST

Dr. Kosta J. Killas, son of Mr. and Mrs. James Killas, formerly of Prince Rupert and now of Vancouver, has opened up for dental practice in the Medical-Dental Building, Vancouver, following his recent graduation from the Oregon Dental College with the degree of Doctor of Dental Medicine.

Born in Prince Rupert, Kosta Killas received his public and High School education here and later took three years in University of British Columbia before going to Oregon Dental College.

MARRIAGE AT TERRACE

TERRACE—Under a large white wedding bell in an archway of cedar boughs decorated with pansies, Elsie May Crego, eldest daughter of Mr. and Mrs. W. Crego, and Donald Charles Hull, elder son of Mr. and Mrs. G. Hull, were united in marriage by the Rev. A. C. Shindel at the Pentecostal Church on Wednesday evening.

Cedar boughs and late summer flowers decorated the front of the church piano and windows and made an ideal setting for the beautiful bridal party.

Given in marriage by her father, the lovely bride was graceful in a floor-length gown of lustrous white satin which featured a small bustle, portrait neckline and long sleeves. Her bridal veil, entrain, was crowned with an Elizabethan coronet. She carried an arm bouquet of red and cream gladioli, baby's breath and fern.

Maid of honor was Miss Ann Molitor, charming in a floor-length, long-sleeved gown of blue velvet and artistically decorated by Mrs.

flowers and a blue shoulder veil.

The two pretty bridesmaids, Dorothy and Mildred Crego, popular sisters of the bride, the former wearing a long gown of pink sheer with long sleeves, pink ribbon sash and shoulder veil crowned with pink velvet flowers. Mildred wore a deep cream gown with short sleeves and ribbon sash. The bride's attendants all carried bouquets of pastel shaded flowers.

The toast to the bride was given by her grandfather, A. A. Crego of Vancouver and responded to by the groom.

Leaving on a motor trip through the province, the bride wore a navy suit with pale blue accessories. On their return, the newlyweds will reside in an apartment above the groom's men's furnishings store on Lakelse Avenue. The bride was a popular member of the local telephone staff.

Attending the groom was his brother, Wayne. Kenneth Alger was the usher.

As the bridal party proceeded down the aisle after the ceremony, pictures were taken by Jim Brickley.

Mrs. F. Gibbs was soloist during the signing of the register and Miss Grace Little played the nuptial music.

A reception was held in the Credit Union Hall where the guests gathered to felicitate the happy couple. Flowers in profusion, wedding bells and streamers decorated the hall and tables. The bride's table was covered with a lace cloth, hand crocheted by the bride's mother. Centering it was a three-tier wedding cake made by the bride and artistically decorated by Mrs.

F. Bailey. Receiving the guests was Mrs. W. Crego who had chosen a gown of black and rose printed silk, black accessories and corsage of red and cream gladioli. The groom's mother wore wine with grey accessories and corsage of glads.

The toast to the bride was given by her grandfather, A. A. Crego of Vancouver and responded to by the groom.

Leaving on a motor trip through the province, the bride wore a navy suit with pale blue accessories. On their return, the newlyweds will reside in an apartment above the groom's men's furnishings store on Lakelse Avenue. The bride was a popular member of the local telephone staff.

Attending the groom was his brother, Wayne. Kenneth Alger was the usher.

As the bridal party proceeded down the aisle after the ceremony, pictures were taken by Jim Brickley.

Mrs. F. Gibbs was soloist during the signing of the register and Miss Grace Little played the nuptial music.

A reception was held in the Credit Union Hall where the guests gathered to felicitate the happy couple. Flowers in profusion, wedding bells and streamers decorated the hall and tables. The bride's table was covered with a lace cloth, hand crocheted by the bride's mother. Centering it was a three-tier wedding cake made by the bride and artistically decorated by Mrs.

SHAKE-UP

(Continued from Page 1)

will be watched with a great deal of interest.

Whether these systems or modifications of them will be adopted in the other destroyers of the R.C.N. will depend on the success of the tests to be carried out in H.M.C.S. Sioux under practical sea-going conditions.

Concurrent with announcement of the destroyer program, it was announced that H.M.C.S. Magnificent was expected to return to service in mid-October.

The Magnificent will work up and engage in a period of flying training in East Coast waters, after which she will proceed on an autumn cruise.

During this period, the carrier will embark for sea training ordinary seamen who have completed their new entry training at H.M.C.S. Cornwallis. In this capacity she will replace temporarily the cruiser H.M.C.S. Ontario, which will commence a two-month refit at Esquimalt November 1.

WRATHALL'S PHOTO FINISHING
Developing, Printing
Enlarging
QUICK SERVICE
Professional Supplies
Amateur and

GREER & BRIDDEN

CONTRACTORS AND BUILDERS

- CONSTRUCTION
- ALTERATIONS
- REPAIRS

FLOOR SANDING
A SPECIALTY

RED 561 P.O. BOX 721

Regal Printers

PHONE 24 222 Second Ave.

Baptone

The Wonder Wall Paint

Made to be used over Kalsomine, Wall Paper, Plaster, Woodwork and Wall Board

Paint today, move in tomorrow

\$1.40 qt. \$4.50 gal.

THOMPSON HARDWARE CO. LTD.

WARM WOOLS for WINTER . . .

JUST ARRIVED

PURE BOTANY ENGLISH WOOL

3 and 4 ply in a large assortment of colors, as well as many other National Brands. Needles, gauges, books, etc.

Get Complete Supplies for Knitting at . . .



THE VARIETY STORE

Where Your Dimes are Little Dollars

518 3rd Ave. W.

Phone Red 400



FRIDAY—7-9:05

SATURDAY—2-4:20-6:45-9

PLEASE NOTE

MONDAY AND WEDNESDAY MATINEES CANCELLED
Commencing next week the Capitol will open on Monday and Wednesday with the show commencing at 5 p.m. and run continuously. Three complete

MATINEE PRICES TO 5:30 P.M.
Children Unaccompanied Not Admitted After 5:30 P.M.
J. H. Black



"I beat the stuffins out of him."

EARLY ADVERTISING COPY WILL BE APPRECIATED



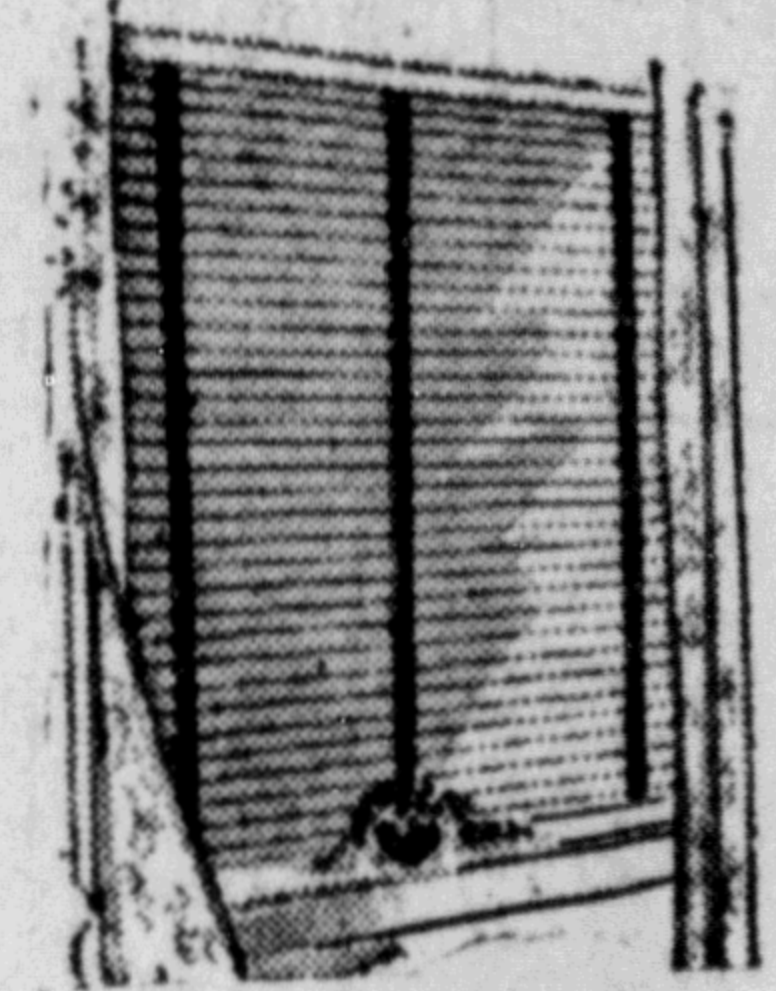
THE FRONT END

It houses the motor—the steering apparatus—the headlights. It's the brain of your car. We'll put it in tip-top shape—extend our service to the rear.

Drive In Today!
PHONE GREEN 217

Superior Auto and Body Service

Studebaker and Austin Sales and



Venetian Blinds

Steel, Aluminum or Wood in a wide assortment of colors with matching contrasting tapes

Drop in and see our catalog or phone, and our estimator will call and measure windows and advise you of installed price.

Gordon's HARDWARE

McBride Street WE DELIVER

Fly OCA

TRAVEL

THE EASY, COMFORTABLE WAY

Regular Trips . . .

To Queen Charlotte Island Point

(Daily, Except Sunday)

To Alice Arm, Stewart

(Every Thursday)

CHARTER FLIGHTS THROUGHOUT

For Information and Reservations, Call

QUEEN CHARLOTTE AIRLINES LTD.

A STRAIGHT CUT for a Truly Mild Smoke

Ask for Millbank. Experience the smoking enjoyment that can be yours in cigarette after cigarette — all day!
It's the Straight Cut Virginia — the top tobacco from tip to tip — that makes Millbank "Truly Mild".



They're firmer - They're milder - They're better

NEW Fargo Trucks

AVAILABLE FOR IMMEDIATE DELIVERY

- 2-Ton Chassis and Cab, 152" Wheelbase with reinforced frame & 2-speed rear axle.
- 3-Ton Chassis and Cab, 170" Wheelbase with reinforced frame & 2-speed rear axle.

Rupert Motors Ltd.

Phones: 866 Office, 566 Shop

A. MacKENZIE FURNITURE LTD.

"A GOOD PLACE TO BUY"

- 4-PIECES BEDROOM SUITE—Oriental Walnut Veneer with Matching Facings \$155.00
- 4-PIECES BEDROOM SUITE—in Rich Almon wood mottled Grain and fittings to harmonize \$199.50
- 4-PIECES BEDROOM SUITE—Rich Almon Wood, Hidden Handled drawers, Peacock Mirrors \$169.50
- 4-PIECES BEDROOM SUITE—Beautiful light Avodire Equatorial wood. Large Mirror \$210.00

Phone 775

327 Third Avenue

Prince Rupert