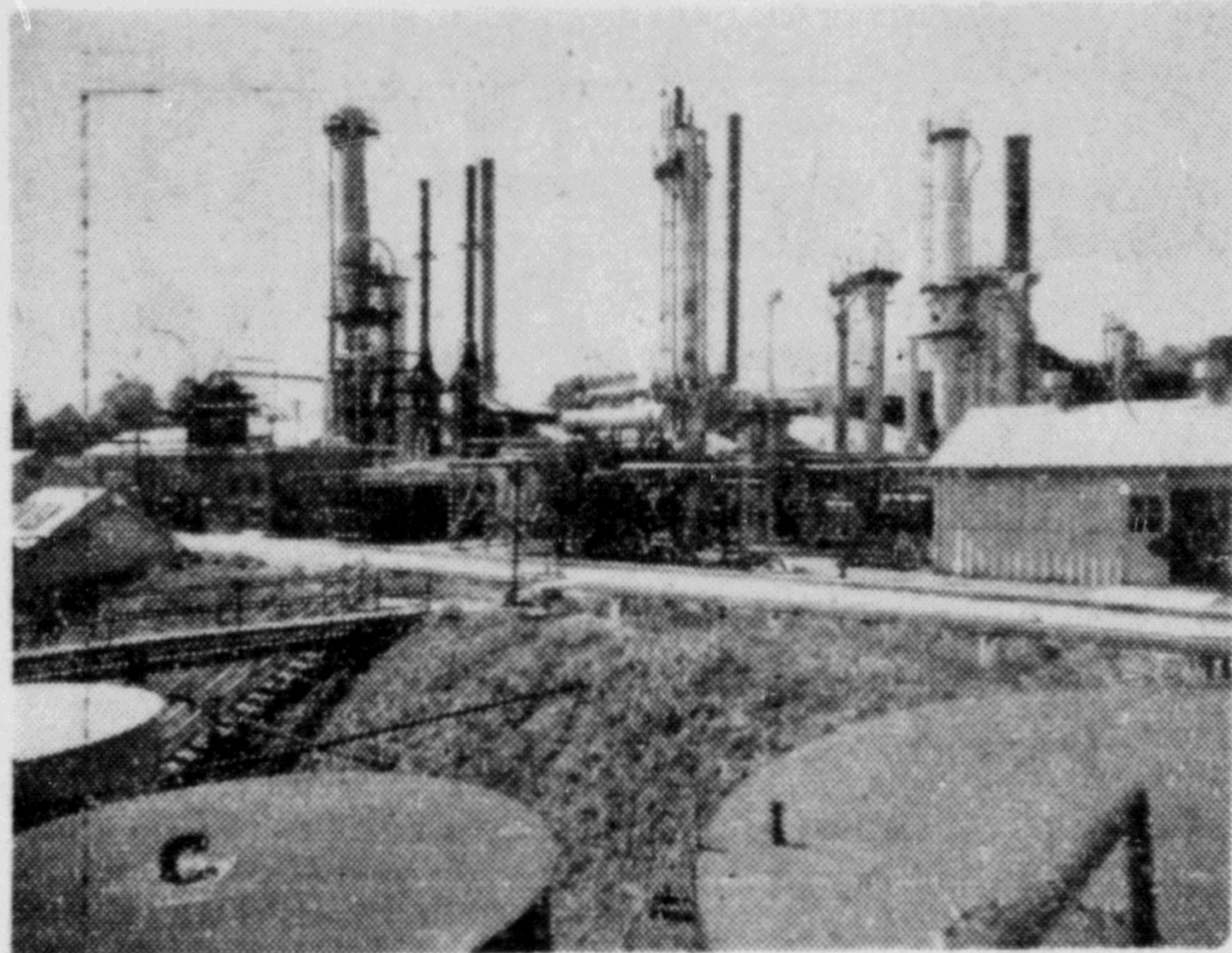


FRACTIONATING TOWERS



These fractionating towers are part of the "cracking plant" at Shellburn Refinery where heavy fuel, resulting from distillation of crude oil, is subjected to temperatures as high as 925 degrees Fahrenheit and pressures of 300 pounds per square inch—a process which actually changes the molecular structure of petroleum to produce modern, high quality gasoline.

Shell in British Columbia

"This major investment in our new Sales Agency and Bulk Storage Depot at Prince Rupert is further evidence of Shell's continued faith in the future growth of our great province—British Columbia. It is also evidence of our determination to spare neither money nor effort to provide petroleum products of the highest quality." This was stated by N. Y. Knox, vice-president and general manager of Shell Oil Company of British Columbia, when commenting on the opening of the company's new installation at Prince Rupert.

Shell commenced marketing operations in B.C. in the year 1913, thirty-six years ago. Operating from a bulk storage depot in Vancouver, in many respects similar to the new Prince Rupert Agency, Shell imported refined petroleum products for marketing in B.C. From this modest beginning the company has grown to be the second largest Refining and Marketing Petroleum Company in the province, with a capital investment of approximately 5½ million dollars.

In 1932 Shellburn Refinery was constructed on Burrard Inlet, just outside of Vancouver. Occupying about 100 acres of wooded hillside overlooking the beautiful shoreline of Burrard Inlet, the new refinery has steadily grown until today little can be recognized of the original refinery unit. Here crude oil is refined into aviation and motor gasolines, heating oils, diesel bunker and industrial fuels, asphalt, road oils and emulsified asphalts. Motor oils and industrial lubricants are other products blended and packaged for shipment.

Immediately after the war years, when steel and machinery, which had been unobtainable for so long, became available, a modernization and expansion program at Shellburn Refinery, and which to date has cost 2¼ million dollars, was initiated. Taking advantage of processes developed during wartime, the first phase of this program, involving the expenditure of \$1,600,000, centred around a new "thermal cracking" unit and "polymerization" unit, both of the most modern type, designed for the production of high octane motor gasoline. The second phase of the program was completed this year at an expenditure of \$600,000, when a new crude "fractionating" unit was installed,

increasing production of petroleum products by 20,500,000 gallons per year, and at which time additional storage tanks were added.

Where in 1932 stood one crude oil distillation tower and its accompanying storage tanks, there is now a veritable maze of processing units, pipes, valves, fractionating towers and huge tanks, where each year more than 80,000,000 gallons of petroleum products are manufactured and stored.

Besides having its own truck fleet to distribute products in the metropolitan areas of Vancouver and Victoria, Shell has a fleet of railroad tank cars for bulk deliveries throughout the interior of the province. Marine transportation is widely used, and includes the coastal tanker "M.V. Western Shell," with a carrying capacity of approximately one-quarter of a million gallons, and two barges, each with a capacity of over 110,000 gallons. The "Western Shell," which soon will be a familiar sight in Prince Rupert, journeys along the B.C. coast delivering products to Shell Marine stations and to the outposts of B.C. lumbering, fishing, and mining industries.

"M.V. Western Shell"

The M.V. "Western Shell" one of the most modern oil supply ships on the coast is a former U. S. Navy tanker from the United States Navy. She carries a complement of 18 souls and is captained by R. C. Laing, a veteran of over 30 years service on the coast. Serving as Chief Engineer with the ship is Allen Minty and W. "Bill" White is the first mate.

The ship herself is propelled by 500 horsepower Union engines and is capable of carrying 250,000 gallons of oil and gasoline. Other special equipment included the first installation on the coast of 288 Mariner radar scope, a new radar direction finder and a recordio fathometer.

as a pilot in December, 1942, chose Prince Rupert as his home with his bride the former Anne Walker, a graduate of the Prince Rupert General Hospital who is well known to local citizens. Mr. and Mrs. Morgan are the proud parents of two lovely children, Allan age seven, and Shirley, age six who are both attending King Edward School. Allan Morgan is very active in the community and vitally interested in sports especially basketball having sponsored various teams in the city. He is a member of the Masons and the Canadian Legion. Before starting the Northern Machinery Limited, Mr. Morgan was employed by the United States government as special accountant. On his plans for the future Mr. Morgan states that Prince Rupert is a good bet for young people and is a mighty fine city to call home.



Mr. Allen Morgan manager of Northern Machinery Limited has just been appointed to represent the Shell Oil Company of B.C. in Prince Rupert. Mr. Morgan after his discharge from the R.C.A.F.

Wide Area Served in B.C.

From the newest agency in Prince Rupert to some 30 other selling agencies in all other major cities and towns Shell is now serving the people of British Columbia. Supplies are moved by tank train in the interior, by tank truck in the Fraser Valley, and by oil tanker on the coast.

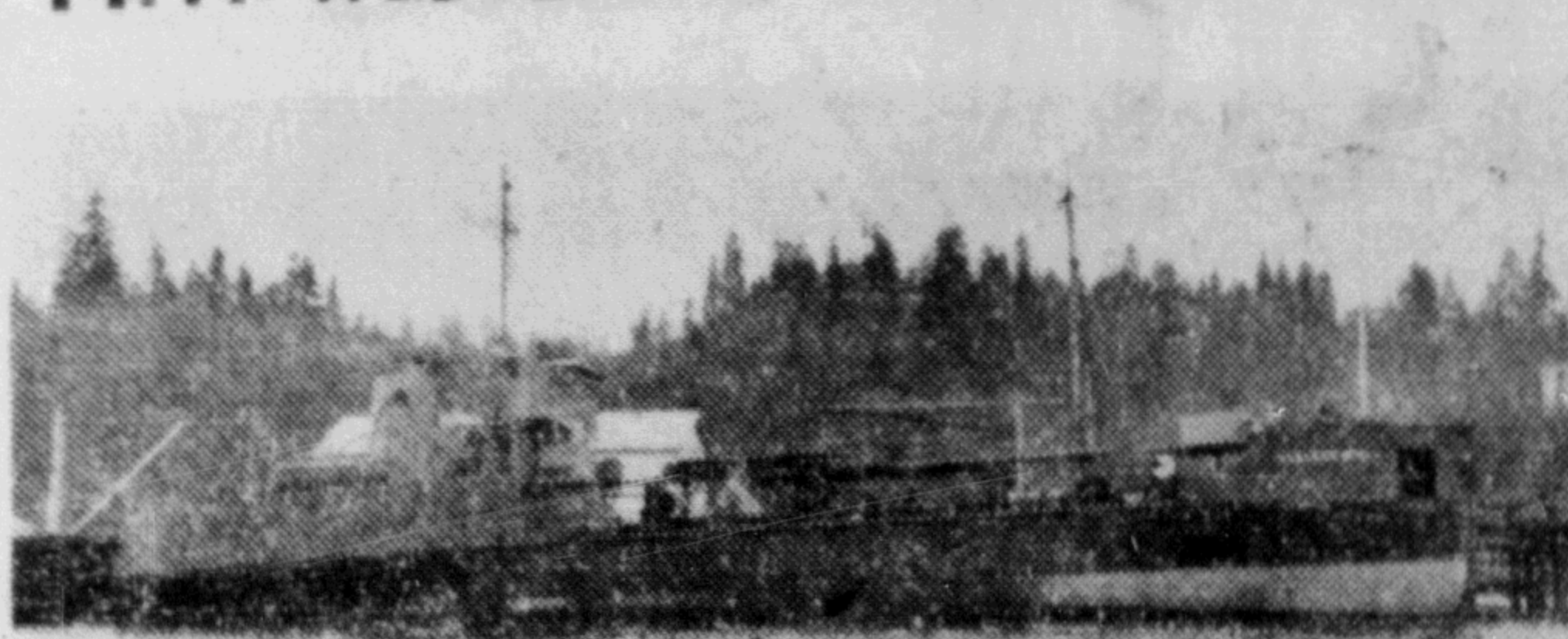
Shell agents have now completed a link between here and Vancouver, and other cities, by road, rail and steamship and the motorist can now drive al-

most anywhere in the province on Shell products.

Earlier this year the bulk storage depots were reopened at Cranbrook and Creston after being closed for a year because of short supply. But now the whole East Kootenays are again being served as the supply is becoming "better than ever."

The general program of Shell of B. C. is to service all parts of British Columbia that are accessible by road, rail or water with the best that modern science has to offer. With the Prince Rupert agency servicing from here as far East as Prince George and covering the Queen Charlotte Islands, and south to Ocean Falls.

"M.V. WESTERN S HELL" AT DOCK



The tanker, "M.V. Western Shell," with a total cargo capacity of approximately one-quarter of a million gallons, is the "supply line" of Shell products to the marine service stations and logging and fishing camps on B. C.'s rugged and beautiful coast line.

SHELL DISTRICT MANAGER

Mr. D. R. MacKerricher has been appointed District Manager at Prince Rupert for Shell Oil Company of B. C. Limited. Mr. MacKerricher has been with Shell for 14 years and has had a wide experience in the field of petroleum marketing. He is well known in marine circles and for the past year has been Shell's deep sea Marine Sales Representative in Vancouver.



NOW...

IN PRINCE RUPERT

SHELL'S NEW DISTRIBUTING CENTRE

Opens Today...

STOCKED WITH A FULL LINE OF
WORLD-FAMOUS SHELL PRODUCTS

Gasoline and Lubricants

For your car

Heating Oils

For your home

Petroleum Products

For industrial, agricultural and marine uses

Your Shell Agent in Prince Rupert is

Northern Machinery Ltd.

PHONE 778

Behind all Shell Products, are years of research by Shell's staff of petroleum scientists. The Shell name and Trade-mark is your guarantee of quality.

YOU CAN BE SURE OF SHELL



SHELL OIL COMPANY
OF BRITISH COLUMBIA LIMITED

SHELLBURN REFINERY
(VANCOUVER)