



**A. MackENZIE FURNITURE LTD.**

"A Good Place to Buy"

**January Bedding Special**

consisting of  
2" Steel Tubing Bedstead  
Steel - Ribbon Slat Spring  
Spring - Filled Mattress  
in 33", 4, 46"

**ALL FOR \$59.25**

SPRING-FILLED ALSON  
MATTRESS SPECIALS

Royal York, panelled \$31.50  
Royal York, plain \$29.50  
Sani-Filled \$27.50

All above have high-tempered coil springs.

**ALL "SPECIALS" CASH FREE DELIVERY**

Phone 775 327 3rd Ave.

Classified Ads Bring Results!  
Advertise in the Daily News!

**Long Distance to Queen Charlottes**

Prince Rupert Chamber of Commerce, on recommendation of its public utilities committee, decided last night to make representations direct to the minister of transport with a view to extending long distance telephone service to Massett and possibly other Queen Charlotte Island points. The committee reported that the local telephone department was ready and willing to co-operate in the handling of such traffic but was unable to do so at present since authority was lacking to use facilities which already existed. Business people on the Islands have told the Chamber that it would greatly facilitate the doing of business between Prince Rupert and the Islands if ready long distance service was available between this city and such points as Massett and Queen Charlotte City.

**CHIROPRACTOR**

John F. L. Hughes, D.C., Ph.C.

21-22 Besner Block

Phone BLUE 442 for Appointment

**HOURS**

10:30 a.m. to 12:30 p.m. and 2 to 5 p.m.

**EVENINGS**

Monday and Friday, 7:30 p.m. for those unable to come during the day. RECEPTIONIST in attendance afternoons.

**CHAMBER EXECUTIVE**

Officers and Directors For 1949 Elected

G. R. S. Blackaby, manager of the Bank of Montreal, was Monday night elected president of the Prince Rupert Chamber of Commerce. L. M. Feisenthal was elected vice-president and E. T. Applewhite was re-elected secretary-treasurer.

Members of the executive council for the year were elected in the persons of J. C. Gilker, A. D. Ritchie, G. A. Hunter, T. N. Youngs, Ald. T. B. Black, Ald. W. F. Stone, C. A. Berner and J. D. McRae.

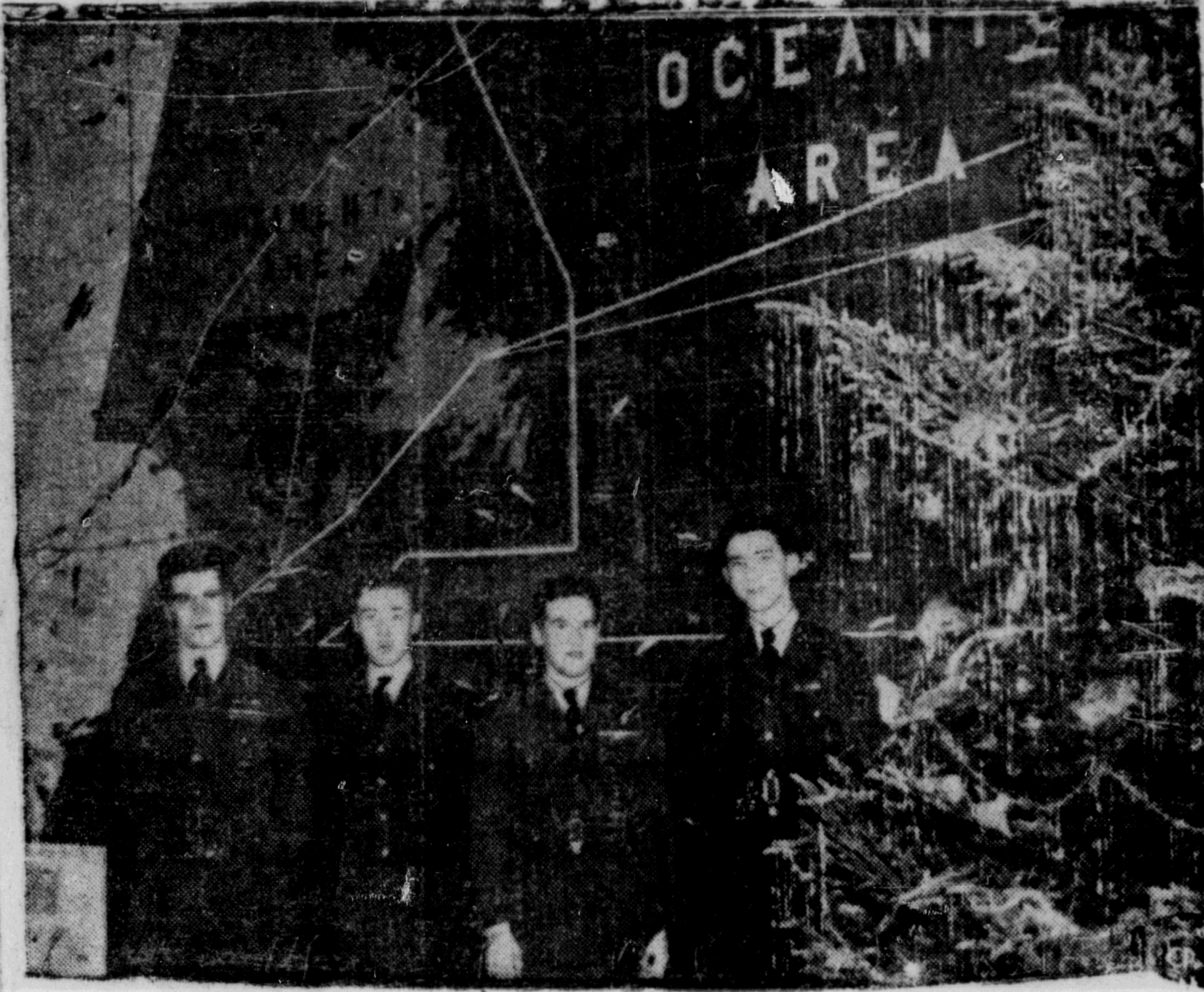
Oath of office to the new president and vice-president were administered by James T. Harvey.

In addition to the election of officers and presentation of the report of the retiring president, Dr. R. G. Large, general business was conducted by the meeting.

A vote of appreciation was accorded the retiring officers and executive for their successful efforts.

President S. G. Furk of the Junior Chamber of Commerce, a head table guest, spoke briefly. With Prince Rupert on the threshold of a new era of industrial expansion, he saw the need of an even more active continuation of the work of the two chamber of commerce bodies which had worked in such splendid co-operation and harmony in recent years.

The new president, G. R. S. Blackaby, urged the Chamber



**MERCY WORK CONTINUED** — There was no let up in the activities of the R.C.A.F. Search and Rescue unit at Halifax during the Christmas season. Mindful of last year when the staff spent a hectic holiday season, a Christmas tree was installed near the plotting board to give the required Yuletide touch. This R.C.A.F. photo shows, left to right, Flt. Lt. W. E. Gordon, Saskatoon; LAC C. Stevens, Didsbury, Alta.; FO R. E. Marleau, Cornwall, Ont.; and LAC A. Latham, Seal Harbor, N.S. Last Christmas season Search and Rescue reported three mercy flights, a missing aircraft and two ships in trouble. (CP Photo)

**AIR PASSENGERS**

To Vancouver—Mr. and Mrs. Laurie, D. Moore, J. Siatta, Mr. and Mrs. W. J. Nelson, Mrs. M. Jessop, N. Baker, Mrs. H. F. Pullen, Mrs. H. Mork, D. Main, To Sandspit—Mr. Mills.

**Better English**

By D. C. WILLIAMS

1. What is wrong with this sentence? "She ran the whole way without hardly stopping."
2. What is the correct pronunciation of "delusive"?
3. Which one of these words is misspelled? Affrontery, effluence, affilliate.
4. What does the word "ostentatious" mean?
5. What is a word beginning with ap that means "specially suitable"?

**ANSWERS**

1. Say, "She ran the whole way almost without stopping," or, "with hardly a stop." 2. pronounce the e as in me, u as in cube, s as in so (not as z), accent second syllable. 3. Effrontery. 4. Pretentious. "This is true philanthropy, that buries not its gold in ostentatious charity, but builds its hospital in the human heart." —Harley. 5. Appropriate.

**SHIPS and WATERFRONT**

Bringing the first of many large cargoes of similar material to be delivered by the Frank Waterhouse Line from Vancouver, freighter Chilliwack, Capt. Harry Stephens, is due at Port Edward at the end of this week with 350 tons of cement to be used in the construction of the new celanese mill on Watson Island. The Chilliwack is also bringing general cargo for various coastal points in this area including Ocean Falls, Klenmu, Sandspit, Queen Charlotte Islands, and Alice Arm which will be the northern extremity of this voyage.

Moving, Packing, Crating Shipping and General Cartage and Storage For Complete, Reliable and Efficient Service, call

**Lindsay's Cartage & Storage Limited**  
Cor. 2nd and Park Avenues  
Established 1910  
Phones 60 and 68

**COTTAGE CHEESE**  
New Creamed — Fresh Made  
**VALENTIN DAIRY**  
Your Daily ALL-WEATHER SERVICE

**NOW AVAILABLE**



LOOK FOR THE NEW RED AND WHITE **GOLD SEAL LABEL**

**MAYOR NAMES COMMITTEES**

Black Finance Chairman and Rudderham Public Works

Mayor Nora E. Arnold named appointments to standing city committees from the 1949 city council at the first meeting of the year last night and filled the library, parks and other boards with the appointment of skiersmen and other citizens.

Here are the appointments: Finance—Ald. T. B. Black (chairman), Ald. W. J. McLean, Ald. W. F. Stone.

Board of Works—Ald. G. W. Rudderham (chairman), Ald. G. B. Casey, Ald. H. S. Whalen.

Utilities—Ald. H. M. Daggett (chairman), Ald. J. N. Forman, Ald. H. S. Whalen.

Health, Social Assistance, Police and Licensing—Ald. W. F. Stone (chairman), Ald. W. J. McLean, Ald. J. N. Forman.

Pioneer Home Committee—Ald. W. F. Stone (chairman), Ald. W. J. McLean, Ald. J. N. Forman, W. G. Sheardown, G. E. Hills.

Zoning Committee—Ald. G. B. Casey (chairman), Ald. G. W. Rudderham, Ald. H. M. Daggett.

Cliff Ford Fund Trustees—Mayor Nora E. Arnold, City Clerk H. D. Thain, Ald. W. F. Stone.

Wage Committee—Chairman of standing committees.

Prince Rupert Health Unit Delegates—All Health Committee.

Library Board—Ald. T. B. Black, Mrs. M. M. Epper, A. D. Ritchie, Bruce Stevens, Mrs. B. S. Procter, Mrs. W. S. Kergin.

Parks—Robert McKay, Ald. G. W. Rudderham, Ald. G. B. Casey, Ald. H. S. Whalen, C. P. Balagno, E. D. Forward, W. D. Lambie, City Engineer Don Stewart.

Civic Centre Delegates—Ald.

W. F. Stone, Ald. J. N. Forman, Hospital Board—Ald. Whalen, Museum Board—Mayor E. Arnold, Public Relations—Ald. H. M. Daggett.

Advertise in the Daily News

**Prince Rupert Flowers**  
300 3rd Ave. Box 516  
Flowers for All Occasions



Sail South by fam Princess Line

Enjoy the restful accommodation, the delicious food, the excellent service of Princess Seamer.

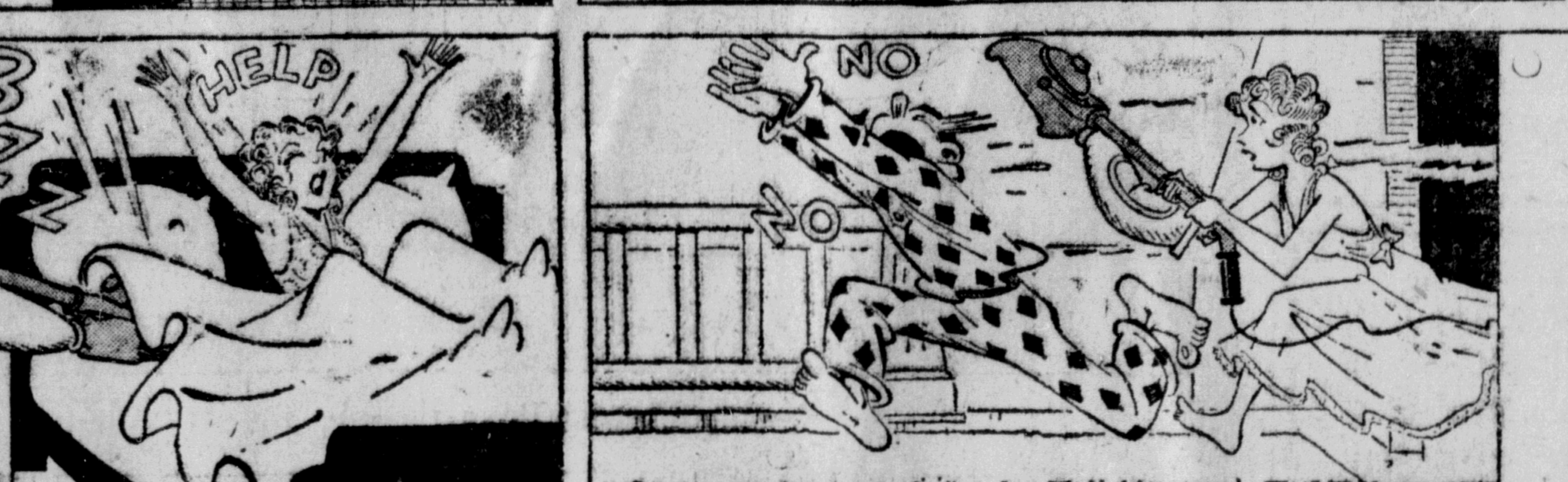
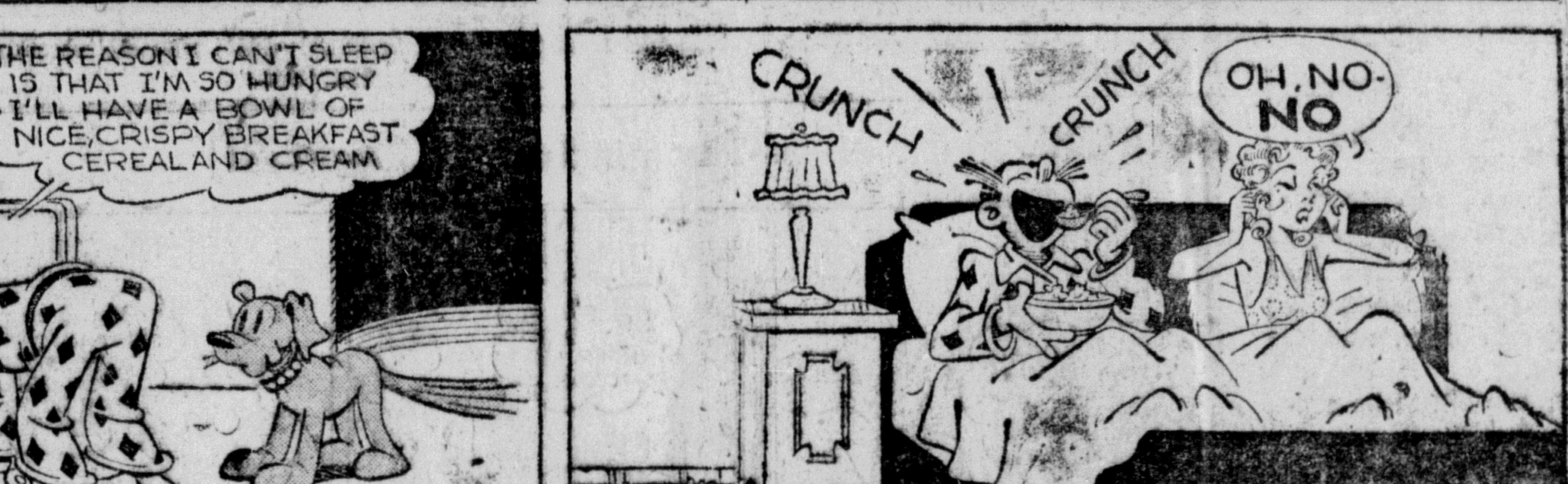
**PRINCE RUPERT SAILINGS**

Southbound  
WEDNESDAY, JAN  
WEDNESDAY, JAN  
WEDNESDAY, FEB

For information and reservations contact D. H. E. Maclean, General

**Canadian Pacific**  
WORLD'S GREATEST TRAVEL

**BLONDIE**  
by CHIC YOUNG



**SWISH .. into the New Year**

with the gay assurance that comes with that feeling of being groomed for any occasion. Sweet Sixteen has a fine display of striking formals and after-five gowns that fit right in with the holiday mood.

**CLEARANCE SALE**  
Prices that will bolster your Budget  
COATS—Fur, Fur Trimmed and Plain  
DRESSES—Wool, Crepes, Gabardines, Bengalines and Taffetas  
BLOUSES and PURSES

A small deposit holds any purchase and the Sweet Sixteen Personalized BUDGET PLAN can be used to take care of the balance. No Interest—No Carrying Charge.



**FOR ALL TYPES OF PRINTING**

- OFFICE SUPPLIES
- HOME STATIONERY
- GREETING CARDS
- PENS AND PENCILS

**Dibb Printing Co.**  
Besner Block

Carving Sets Pocket Knives

**PYREX DOUBLE BOILERS**

Casseroles Table Cutlery

**THOMPSON HARDWARE CO. LTD.**

**HOLLYWOOD CAFE**

Most Up-to-Date Cafe in the City  
Open from 8 p.m. to 4 a.m.

We Specialize in Chinese Dishes  
**CHOP SUEY — CHOW MEIN**  
FOR OUTSIDE ORDERS PHONE 133