

OFFICIAL OPENING

Prince Rupert Daily News
Wednesday, November 24, 1948

5

CANADA PACKERS

Modern Branch House

THURSDAY, NOVEMBER 25

Extend to You A Cordial Invitation

TO INSPECT OUR FINE NEW BRANCH
HOUSE — DRY DOCK ROAD

At 3:00 p.m. Thursday, November 25

SPECIAL INVITATION IS EXTENDED TO EVERY HOMEMAKER

SOUVENIR GIFTS FOR THE CHILDREN

CANADA PACKERS PRINCE RUPERT BRANCH



Canada Packers New Modern

BRANCH HOUSE

. . . . Is the Latest in Design

THIS ADDITION BRINGS TO TWENTY-FOUR THE NUMBER OF BRANCH
HOUSES SERVICING CANADIAN RETAILERS AND CONSUMERS FROM
PRINCE RUPERT TO HALIFAX.

THESE BRANCHES ARE SUPPLIED BY EIGHT UP-TO-DATE PACKING
PLANTS LOCATED IN THE FOLLOWING CITIES:

VANCOUVER — EDMONTON — WINNIPEG — PETERBORO — TORONTO
HULL — MONTREAL — CHARLOTTETOWN



C. J. LONG
Plant Superintendent,
Edmonton

Joined the company in 1927
at Winnipeg as Shift Engin-
eer.

In 1928 he became Chief En-
gineer and in 1930 also as-
sumed the duties of Mechan-
ical Superintendent of the
Winnipeg plant.

In 1936 Mr. Long was sent to
Edmonton to assist with the
construction and supervise
the installation of the equip-
ment at the new Edmonton
plant, and upon its comple-
tion assumed the duties of
Plant Superintendent.

The new Prince Rupert
branch was built under Mr.
Long's supervision and he
looks upon the new branch as
one of the highlights of his
career.



C. C. POLKINGHORNE
General Sales Manager

Mr. Polkinghorne joined the
company in 1914 as a clerk.
He served overseas in World
War I from 1915 to 1919, dur-
ing which time he won the
D.C.M.

Upon his return from over-
seas he was posted to the
Credit Department, Toronto,
and in 1921 was appointed
Credit Manager of the Win-
nipeg plant.

In 1922 Mr. Polkinghorne re-
turned to Toronto and went
into the Sales Division, suc-
ceeding to the post of Car
Route Sales Manager in 1927.

In 1942 he was appointed to
the important post of Gen-
eral Sales Manager for Can-
ada.



T. W. BOLES

T. W. Boles, Winnipeg born,
has been in the packinghouse
field with Canada Packers for
the past 30 years.

He has had a varied career
in the meat business, having
worked in various depart-
ments of the business prior to
being placed in charge of St.
Boniface Car Route Sales-
men in 1926.

In 1932 he was appointed
Regina Branch Manager and
in 1936 moved to Edmonton as
Sales Manager, where he has
under his jurisdiction 45
salesmen and sales super-
visors operating territories from
the Saskatchewan border to
the Pacific Ocean.

Nine-Year-Old Idea Culminates in Opening of Plant in Pr. Rupert

Canada Packers have been casting an eagle eye
towards an expansion program in Prince Rupert for
the past nine years, realizing the necessity of con-
structing suitable facilities for handling the ever-
growing requirements of Prince Rupert populace and
adjoining territories, including the Queen Charlotte
Islands, Yukon Territories and Alaska.

Due to wartime restrictions and, later, shortage
of materials, the construction was delayed.

However, the company is pleased that it is now
equipped with a modern well-located branch where
there will be made available to the consuming public
the fine quality "Maple Leaf" meats, "York" canned
goods, poultry, eggs and cheese processed in Canada's
finest packing plant, in Edmonton, Alberta.

Ideal temperatures will be maintained in the
branch house at Prince Rupert to ensure freshness of
product at all times.



HARVEY FREDERICK IRWIN
Born in Springwater, Sas-
katchewan, in 1921.

Joined the company in April,
1940, after completing his
schooling in Edmonton.

Mr. Irwin spent two years in
Edmonton in departmental
work prior to enlisting in the
Royal Canadian Navy in 1941.

Upon his return, he spent
some time on Traffic work be-
fore taking over a sales ter-
ritory.

His duties in Prince Rupert
will be sales distribution.

CHARLES HENRY CALLAHAN

Mr. Callahan joined the ser-
vices of Canada Packers in
August, 1942.

Hank, as his friends know
him, was born in Pincher
Creek, Alberta, and attended
public school in that town,
completing his education in
Edmonton.

After leaving school, he spent
nine years in the retail meat
business prior to joining Can-
ada Packers Limited.

He left our employ for over-
seas service in the R.C.A.F.,
returning to us in September,
1945, and shortly after was
promoted to Sales Supervisor.

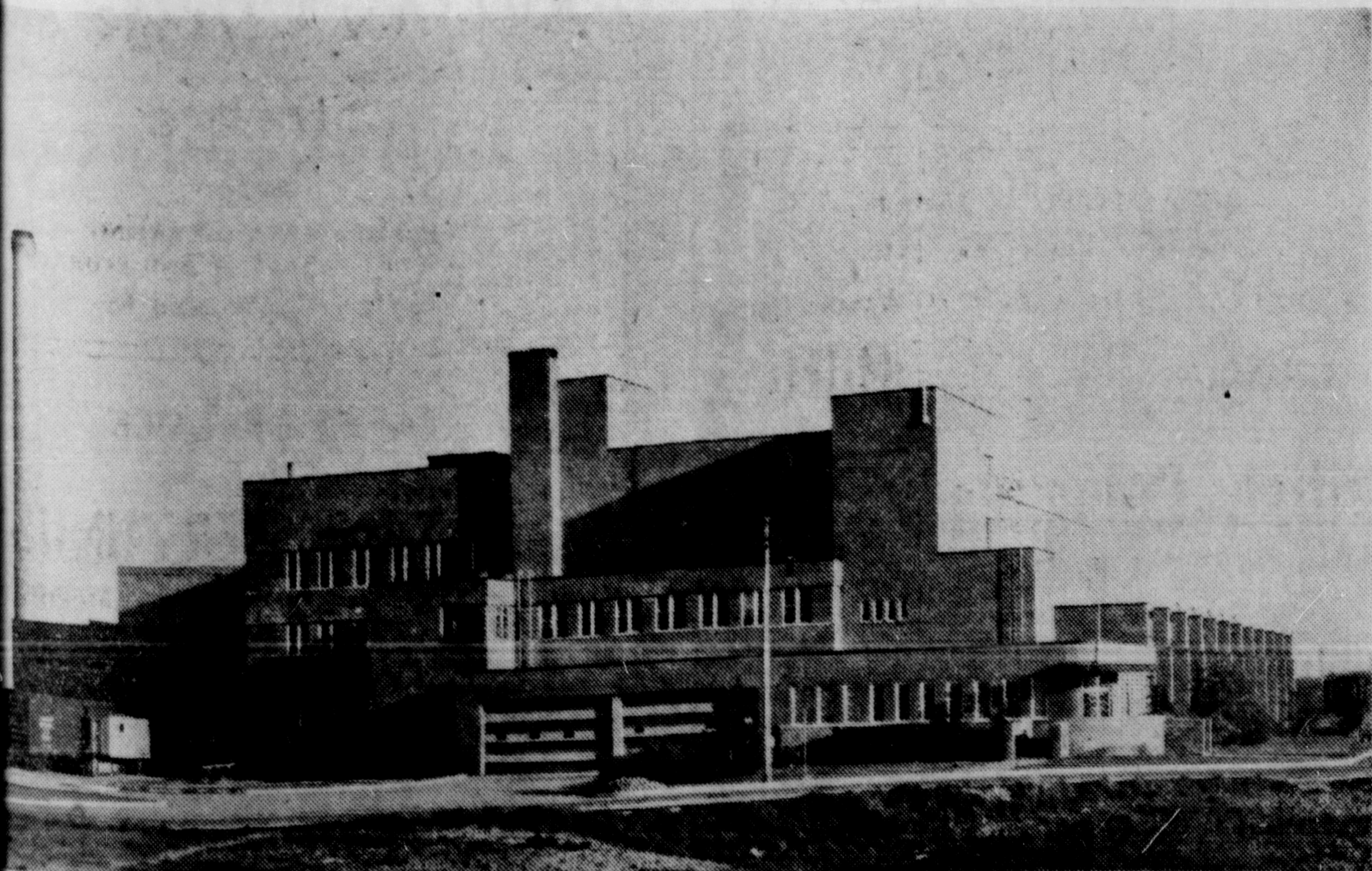
His duties are boosting the
sales throughout our B.C. ter-
ritories.

ROBERT KENDALL ELKINS

Bob is a Prince Rupert pro-
duct, having been born here
in 1919 and acquiring his
schooling in Prince Rupert.

He joined Canada Packers
in the capacity of sales rep-
resentative in 1940.

Previous to joining Canada
Packers, he served in the
Royal Canadian Navy from
September, 1939, to October,
1945.



CANADA PACKERS EDMONTON PLANT

Processors of ---

MAPLE LEAF PRODUCTS

Hams * Bacon * Lard * Soap

Domestic Shortening