

MARKETS

Fresh Fruit	
Oranges, 25	25
Apples, 25	25
Pears, 25	25
Plums, 25	25
Cherries, 25	25
Strawberries, 25	25
Blueberries, 25	25
Raspberries, 25	25
Blackberries, 25	25
Cherry, 25	25
Peach, 25	25
Apricot, 25	25
Vegetables	
Carrots, 10-13	10-13
Onions, 10-13	10-13
Potatoes, 10-13	10-13
Cucumbers, 10-13	10-13
Vegetable Marrow, 10-13	10-13
Sauzash, 10-13	10-13
Mixed Vegetables, 10-13	10-13

Parsley bunch, 05-15	05-15
Turnips, 05-15	05-15
Schnitz, 2 lb. cello, 05-15	05-15
Radishes, bunch, 05-15	05-15
Mushrooms, lb., 05-15	05-15
Head Lettuce, 05-15	05-15
Cooking Onions, 3 lbs., 13-18	13-18
Cauliflower, lb., 13-18	13-18
Tomatoes, Calif. 2 lbs., 13-18	13-18
Cabbage, lb., 13-18	13-18
Tomatoes, No. 1 lb., 33-38	33-38
Potatoes, 10 lb., 33-38	33-38
Cucumbers, lb., 33-38	33-38
Vegetable Marrow, lb., 07-12	07-12
Sauzash, lb., 16-18	16-18
Canned Vegetables	
Dill Pickles, gal., 1.65	1.65
Cut Green Beans, 1/2 y., 1.18	1.18
No. 5 Peas, fancy, 1.18	1.18
Mixed Vegetables, 2.23	2.23
Diced Beets, per tin	
Wax Beans, choice, 16	16
Mixed Peas and Carrots, 21	21
Pumpkin, 2 for, 21	21
Baked Beans, 20-oz. tin, 23	23
Baked Beans, 15-oz. tin ea., 14	14
Tomatoes, 22-oz., 23	23
Fresh Milk	
Quart, 23	23
Half, 12	12
Cream, 1/2 pint, 22	22
Eggs	
Medium, cartons, 59	59
Pullets, cartons, 62	62
Butter	
First Grade, lb., 37	37
Margarine, lb., 33	33
Cheese	
Canadian Cheese, lb., 60	60
Milk	
Evaporated Milk, 16-oz. tins, 2 for, 7.50	7.50
Flour	
Pastry Flour, 7 lbs., 56	56
Flour, 49's, No. 1 hard, 3.60	3.60
Wheat, 24's, 1.82	1.82
Tea and Coffee	
Coffee, lb., 63-84	63-84
Tea, DeLuxe quantity, lb., 1.18	1.18
Jams	
Orange Juice, 29	29
Blended, 33	33
Grapefruit, 19	19
Tomatoes, 20-oz. ea., 18	18
22-oz., 24	24
gallon, 34	34
Apple, 20-oz. tin, 2 for, 48-oz., 34	34
Canned Fruits	
Pineapple, crushed, 33	33
Pieces, 20-oz., 41	41
Apricots, 20-oz., 36	36
Cherries, fancy, 20-oz., 29	29
Loganberries, 20-oz., 29	29
Peaches, choice, 24	24
Lard	
Pure, lb., 24	24
Shortening, 31	31
Soap	
Soap, face, bar, 16	16
Laundry, cake, 2 for, 25	25
Soap Powders, large, 41	41
Ice Cream	
Cherries, 1/2 lb. pkt., 45	45
Coconut, lb., 45	45
Almond Paste, lb., 45	45
Fruit Cake Mix, lb., 45	45
Dates, fancy, 1 lb. pkt., 24	24
Seedless Raisins, 2 lbs., 26	26
Seeded Raisins, 2 lbs., 26	26
Shelled Walnuts, 1/2 lb., 47	47
Shelled Almonds, 6 oz., 35	35
Shelled Brazil, 6 oz., 35	35
Shelled Brazils, 1/4 lb., 42	42
Jam - cre, 50	50
Strawberry, 24-oz., 50	50

Calvert Mount Royal Canadian Whisky

A Distinguished Member of a Distinguished Family

Advertisement is not published or displayed by the Liquor Control Board or by the Government of British Columbia.

Steamship Movements

For Vancouver
 Sunday - ss. Camosun, 9 p.m.
 Tuesday - ss. Catala, 1:30 p.m.
 Thursday - ss. Prince George

From Vancouver
 Sunday - ss. Catala, p.m.
 Wednesday - ss. Prince George
 Friday - ss. Camosun, 2 p.m.

For Alice Arm and Stewart
 Sunday - ss. Catala, 11 p.m.

From Alice Arm and Stewart
 Tuesday - ss. Catala, a.m.

For Ocean Falls
 Thursday - ss. Prince George
 11:15 p.m.

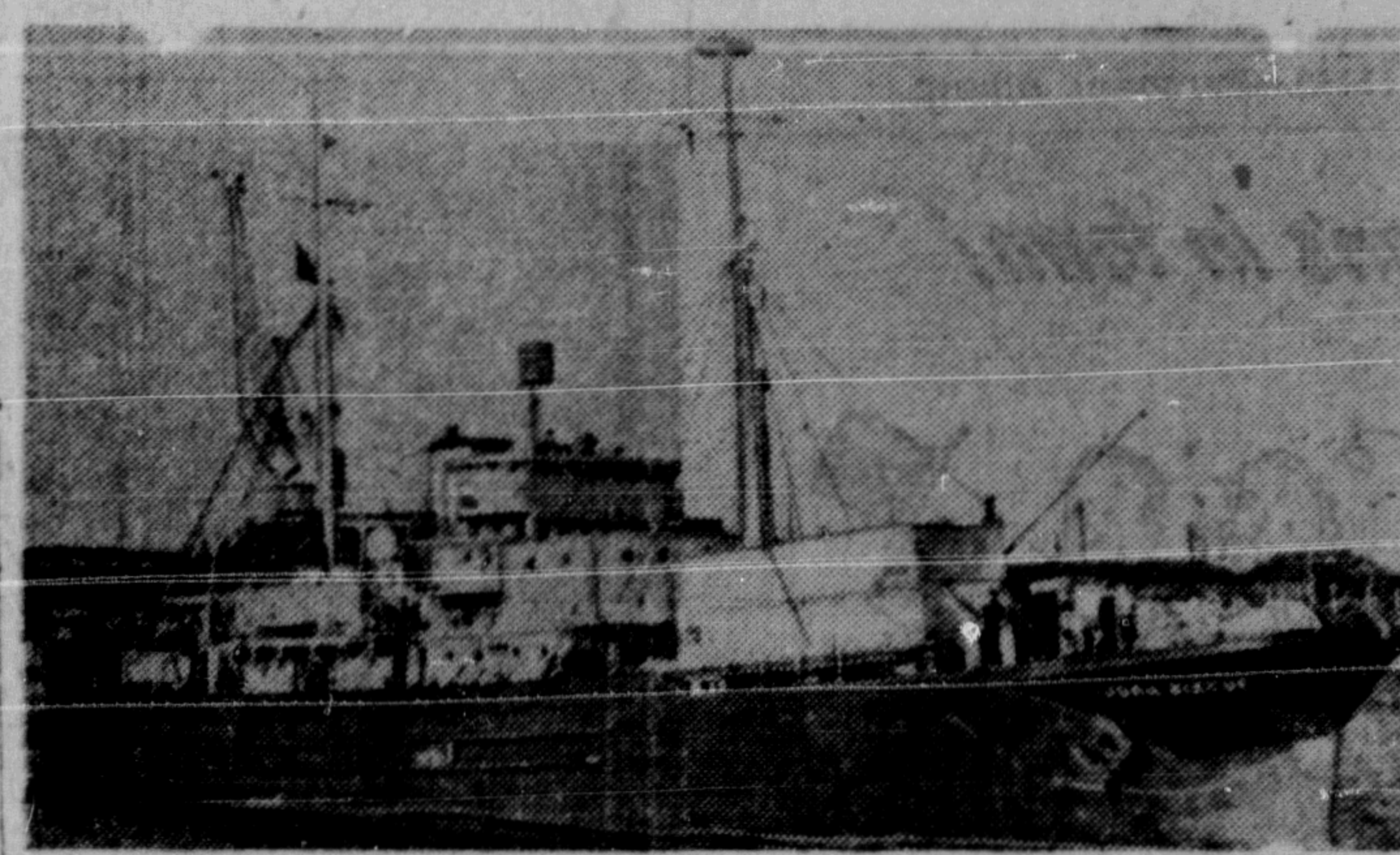
From Ocean Falls
 Wednesday - ss. Prince George

From Alaska
 Thursday - ss. Prince George
 8 p.m.

For Alaska
 Wednesday - ss. Prince George
 p.m.

U.S. PROTESTS SHELLING OF FREIGHTER

With a patch (arrow) over the hole ripped in her side by shell from Chinese Nationalist gunboat, the Isbrandtsen Line freighter "Flying Cloud" rides in Korean waters. Gunboat apparently fired one warning shot across bow before shelling. The U.S. protested the shelling, and has, as yet, received no reply.



CANADIAN PILOT IN ANTARCTIC SEARCH

With this wooden-hulled relief ship as his base, Peter Borden St. Louis, veteran Canadian bush pilot, will fly over uncharted sections of the Antarctic ocean in hope of rescuing British scientists marooned in the area of Stonington Island. He will fly a Norseman amphibian. The ship will set out from Deception Bay, Antarctica, and will penetrate deep into the Antarctic ice fields.

TOO LATE TO CLASSIFY

LOST - Single stranded pearl necklace, finder please phone 680 or Red 196. Reward. (2)

Miss Kathleen Hills returned home from Vancouver on the Camosun this afternoon.

PRINCE RUPERT LAND RECORDING DISTRICT

TAKE NOTICE that the Columbia Cellulose Company Limited of Prince Rupert, British Columbia, occupation manufacturers of cellulose products, intends to apply for a lease on the following described lands, situate on the Western side of Mud Lake, British Columbia, and adjacent to the Northernly and Easternly shore of Lot 1423, commencing on the west bank of the Kitsumzium River at the old bridge piling, opposite the sawmill at 17 Mile Post; Thence Westerly along the South Shoreline of Mud Lake a distance of 3950 feet to a Forest Branch Flag; Thence North Westerly, North Easterly and Northernly along the shoreline of Mud Lake a distance of 5300 feet; Thence East approximately 300 feet; Thence South Easterly 3875 feet to a point 300 feet North East of starting point; Thence 300 feet South West to the starting point; and containing a total area of approximately 138.01 acres.

COLUMBIA CELLULOSE COMPANY LIMITED
H. Yynum, Agent.

PRINCE RUPERT LAND RECORDING DISTRICT

TAKE NOTICE that the Columbia Cellulose Company Limited of Watson Island, British Columbia, occupation manufacturers of cellulose products, intends to apply for permission to lease the following described lands, situate in the vicinity of south of Indian Reserve No. 9, on the Scotia River, commencing at a post planted at about Eight Hundred feet S.460R. of N.W. corner of Indian Reserve No. 9; thence southerly, south easterly, and south westerly following the high water line on the west bank of the Scotia River; thence southerly, north easterly, and westerly following the high water line on the east bank of the Scotia River to the south boundary of Indian Reserve No. 9; thence westerly a distance of approximately Three chains to the point of commencement, and containing Forty Eight acres, more or less.

LIMITED
T. A. V. Tremblay, Agent.
COLUMBIA CELLULOSE COMPANY

PRINCE RUPERT LAND RECORDING DISTRICT

TAKE NOTICE that the Columbia Cellulose Company Limited of Watson Island, British Columbia, occupation manufacturers of cellulose products, intends to apply for permission to lease the following described lands, situate on the south side of the Skeena River opposite Kwinitza Station, British Columbia, commencing at a post planted at about Seventy-two chains south astronomical of the northeast corner of Lot 5839; thence north astro. a distance of approximately Twenty-Five chains to the extreme low water line on the south bank of the Skeena River; thence westerly and south westerly following the extreme low water line of the Skeena River a distance of approximately Seventy chains to the point at rock bluff near slough outlet; thence southerly a distance of approximately One chain to the high water line of the Skeena River; thence easterly, south easterly, and north easterly following the high water line along the south bank of the slough a distance of approximately Seventy-Five chains to the point of commencement, and containing Sixty acres more or less.

COLUMBIA CELLULOSE COMPANY LIMITED
T. A. V. Tremblay, Agent.

TERRACE TOPICS

Beth Lever collided with a car as she was returning from the Community Xmas Tree at the Civic Centre last Wednesday but escaped with no injuries, although slightly shocked.

W. H. Williscroft and daughter, Miss Kathleen Williscroft, arrived in the city on the Camosun this afternoon from a trip to Vancouver and will proceed to their home at Terrace by this evening's train.

Mrs. Knut Uggla returned to the city from Vancouver on the Princess Norah this morning.

Rev. and Mrs. W. G. Graham of Burns Lake, former pastor of the Pentecostal Church here, arrived in town on Tuesday's train accompanied by their two sons, George and Gordon, to spend a few days as guests of Mr. and Mrs. Fred Gibbs.

Prince Rupert Florists

Flowers for All Occasions
300 3rd Ave., Box 516 Tel 777

SAVOY HOTEL

W. L. WOODS, Prop.
PHONE 37 P.O. BOX 1897
FRASER STREET PRINCE RUPERT

Just Arrived

A shipment of Julia Arthur Shoes all widths for that special Evening.

\$11.95

FAMILY SHOE STORE LIMITED

3rd Ave., Box 638 Ph. 357

Haven't You Been Missing Something?

Harwood's
Canada's Finest Whisky

This advertisement is not published or displayed by the Liquor Control Board or by the Government of British Columbia.

LOCKER PLANT

HAM 49c | HAM 57c

SWIFT'S PICNIC STYLE... per lb. | SWIFT'S PREMIUM per lb.

Grade A Turkeys, Ducks and Geese

RUPERT FREEZING CO. LTD.
230 2nd Ave. Phone Red 367

MARCHAND OIL HEATERS

VORTEX OIL BURNERS
IRON FIREMAN STOKERS

Plumbing & Heating Alterations

SMITH & ELKINS LTD.

PHONE 174 BOX 274

BUILD

PHONE 363

For Estimates and Supplies

Mitchell & Currie Ltd.

Builders and Contractors

ORMES DRUGS

PRESCRIPTION CHEMISTS

STORE HOURS - WEEK DAYS, 9 A.M. TO 9 P.M.
SUNDAYS AND HOLIDAYS - 12 NOON TO 3 P.M.
7 P.M. TO 9 P.M.

Daily car delivery service, from 9 a.m. till 6 p.m.
Emergency bicycle delivery from 7 p.m. till 9 p.m. and Sunday

HOLLYWOOD CAFE

MOST UP-TO-DATE CAFE IN THE CITY

OPEN FROM 3:30 P.M. TO 3:30 A.M.

We Specialize in Chinese Dishes

CHOP SUEY - CHOW MEIN

For Outside Orders PHONE 133

---"Something Eating You, Dear?"--- By CHIC YOUNG

Copyright 1949 by Chic Young. All rights reserved.