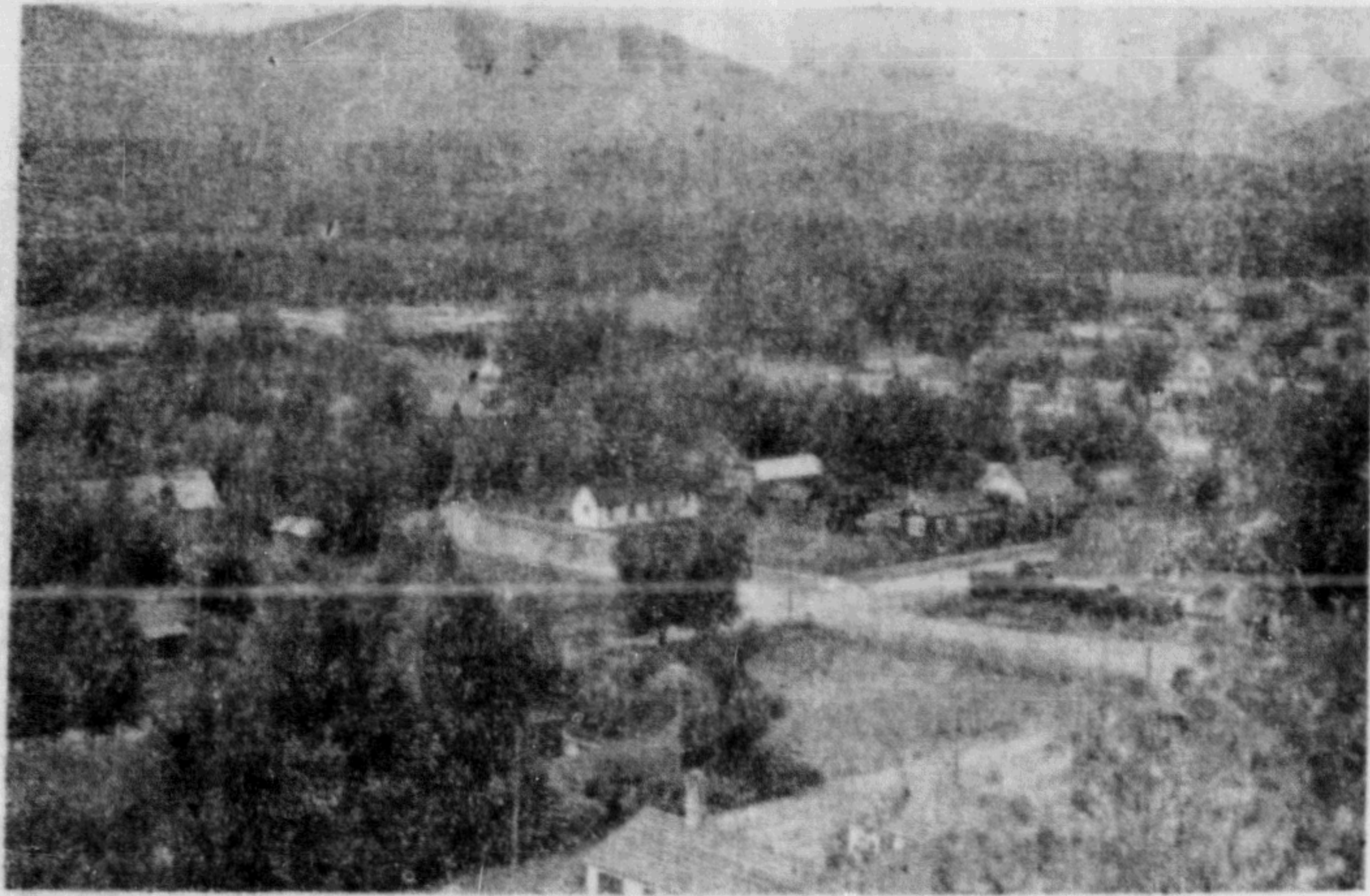
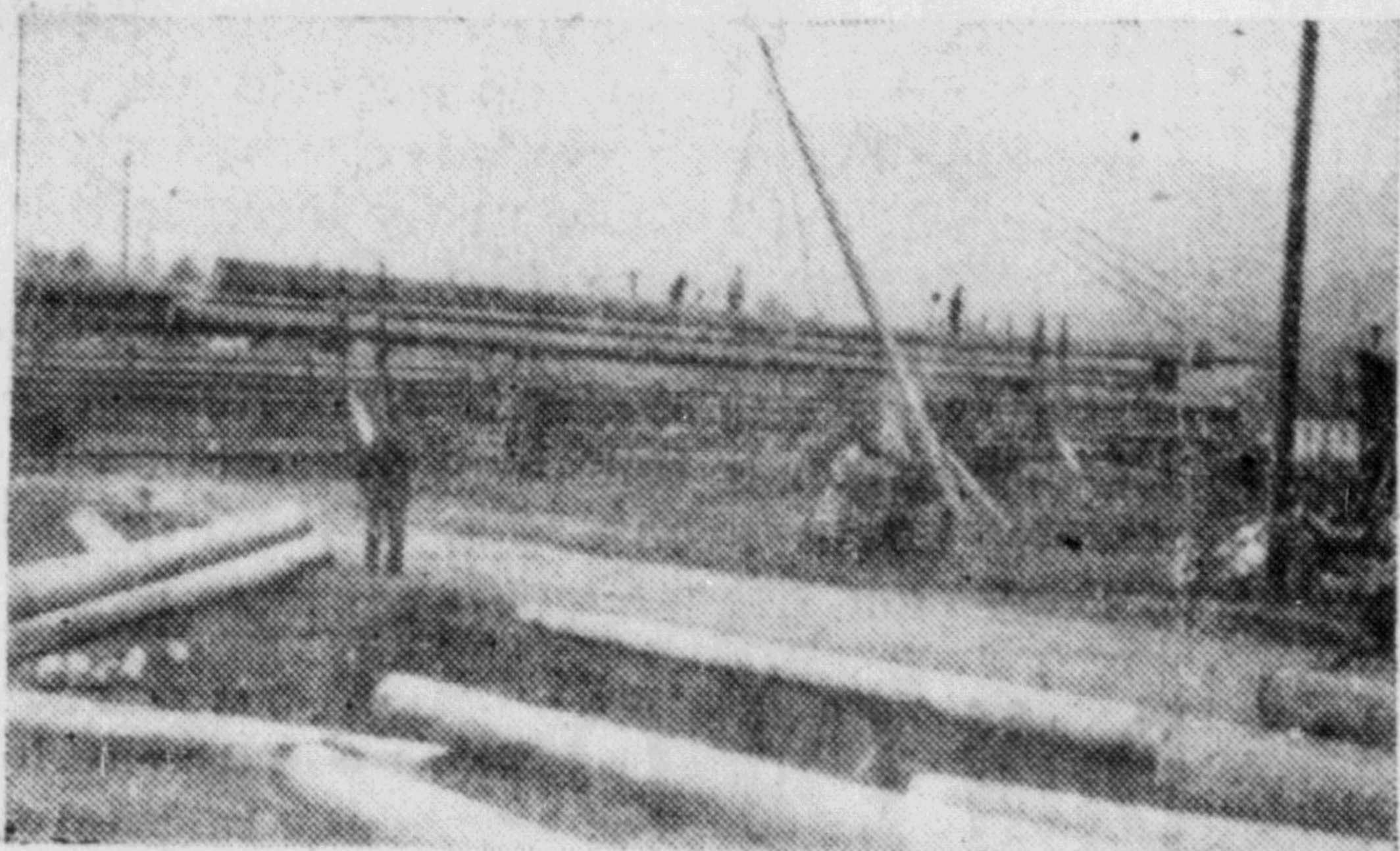


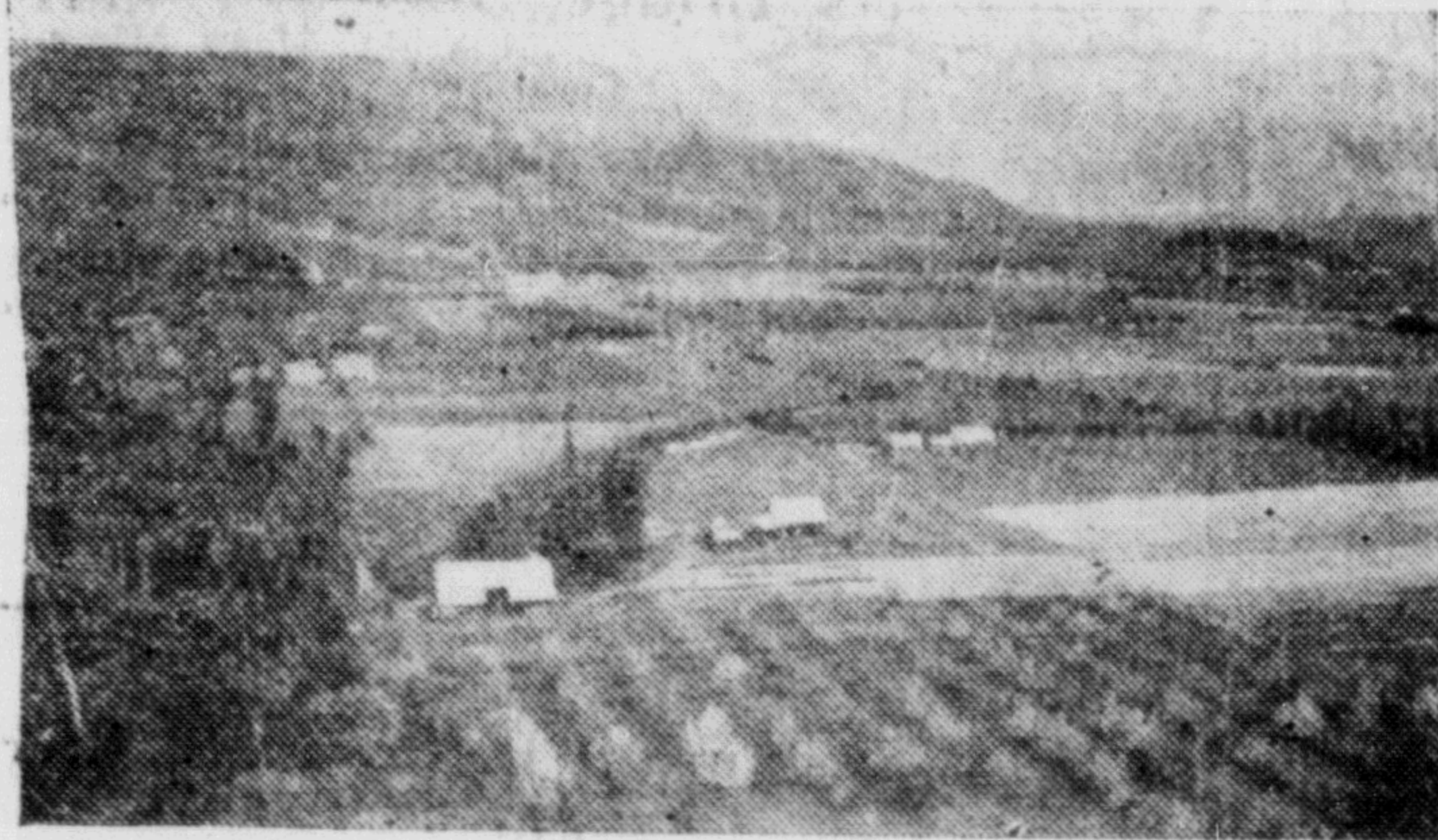
YOU CAN Drive to TERRACE FROM ANY PART OF THE NORTH AMERICAN CONTINENT



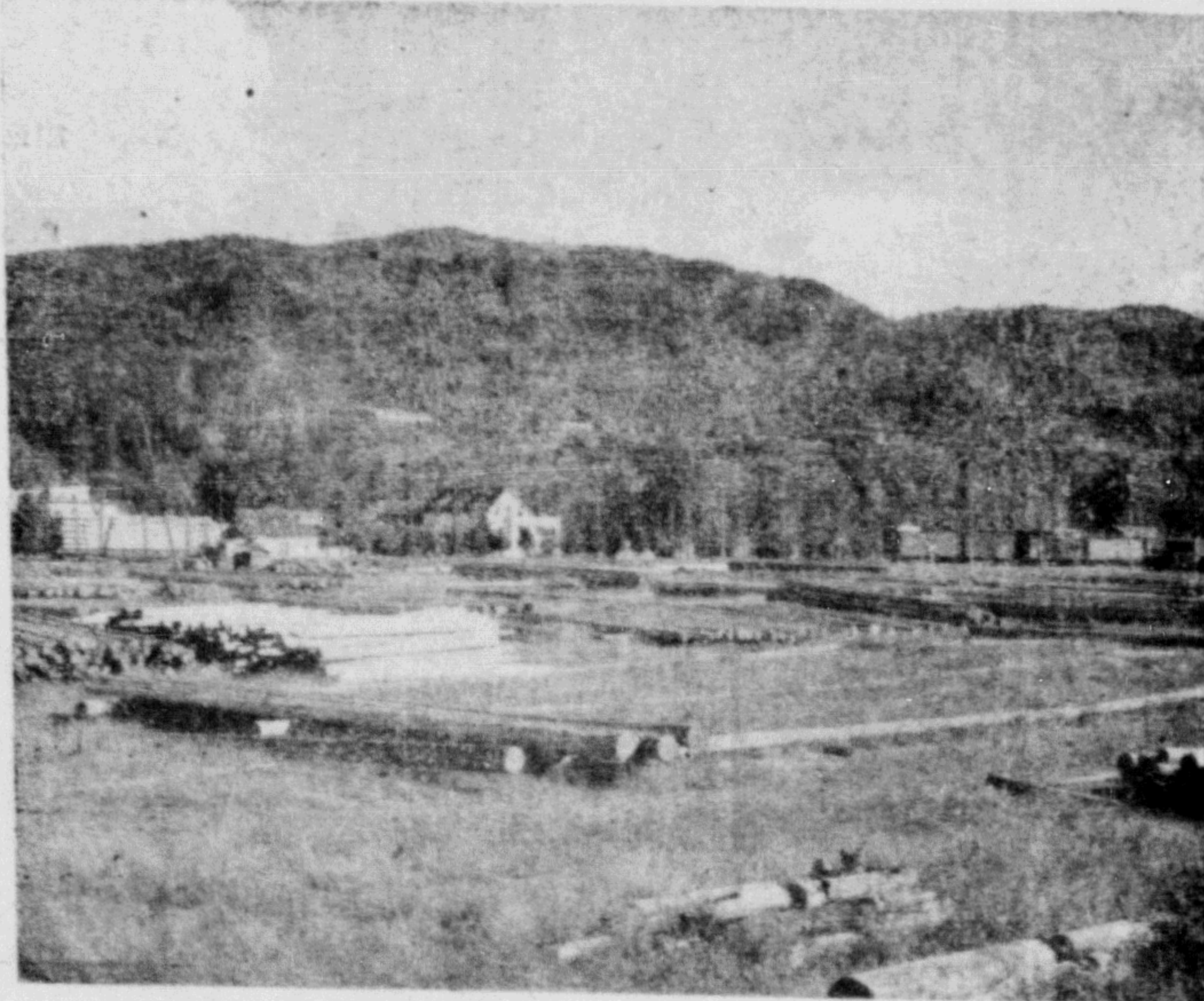
Beautiful Terrace



Loading 120 Foot Poles



Terrace Valley and Farm Lands



Lumbering Industry

★
Come to
the
North's
Evergreen
Playground!

★
THE
HEART
OF
A NEW
INDUSTRIAL
EMPIRE

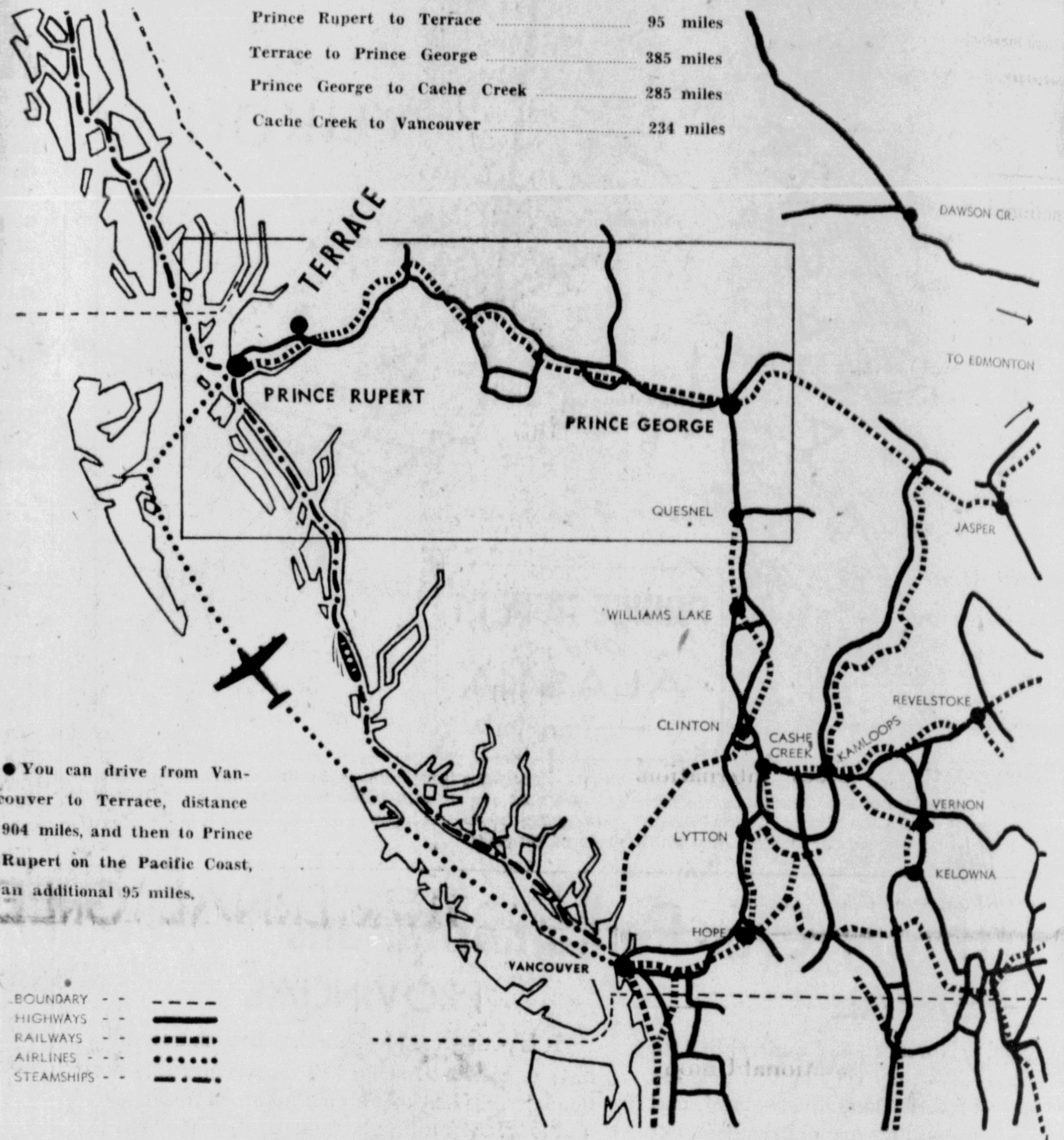
Terrace, B.C.

A MODERN COMMUNITY OF 1700 PEOPLE ON THE BANKS OF THE MIGHTY SKEENA RIVER—JUST 95 MILES INLAND FROM THE PACIFIC OCEAN AND IN THE HEART OF THE GREATEST BELT OF TIMBERLAND TO BE FOUND ON THIS COAST—A LAND OF FRUIT ORCHARDS, APPLES, CHERRIES, PLUMS AND PEARS GROWING IN ABUNDANCE, ONLY 100 MILES FROM THE BORDERS OF ALASKA—TRULY A 'PLEASANT LAND'—A LAND OF OPPORTUNITY.

TERRACE is the Fastest Growing Town in British Columbia

SPONSORED BY

Terrace District Board of Trade



TERRACE Salutes Alaska!

ON THIS OCCASION THE PEOPLE OF TERRACE GREET THEIR FRIENDS IN ALASKA. MAY THE LONG FIGHT FOR RECOGNITION SOON BRING SUCCESS.



Great Is Your Future -- We Salute You -- "State" of Alaska!