

Premier Mine In Production At Month's End

The famous Premier mine, near Stewart, for almost a generation northern British Columbia's leading gold producer, will be in full production again by the end of November after more than a year's shutdown, it is anticipated. Closed as a result of a labor

Mill and Smelter Workers in June, 1948, the mine is now in its final stages of rehabilitation and is expected to achieve full scale production before the end of the year.

Damage to outside buildings, resulting from a year's neglect, has largely been repaired. This included reconstruction of several buildings which had partially collapsed as a result of the heavy snowfall in the Stewart district.

Being removed now are several rock cave-ins in the mine itself which resulted from shifting rock. Involved in rehabilitating the mine is the re-timbering of tunnels and removal of the rock which has fallen, plugging the tunnels themselves.

Superintendent of the mine is Jack McCutcheon, a veteran hard rock mine manager. About 70 men are currently employed and most of these will continue when the mine resumes production. More will be added as production increases.

Resumption of operations at Premier will fill an industrial gap in the Stewart community which has been open since the mine ceased operation and will add considerably to the payroll in the northern mining community.

Acomodation— New Hotel, Apartment

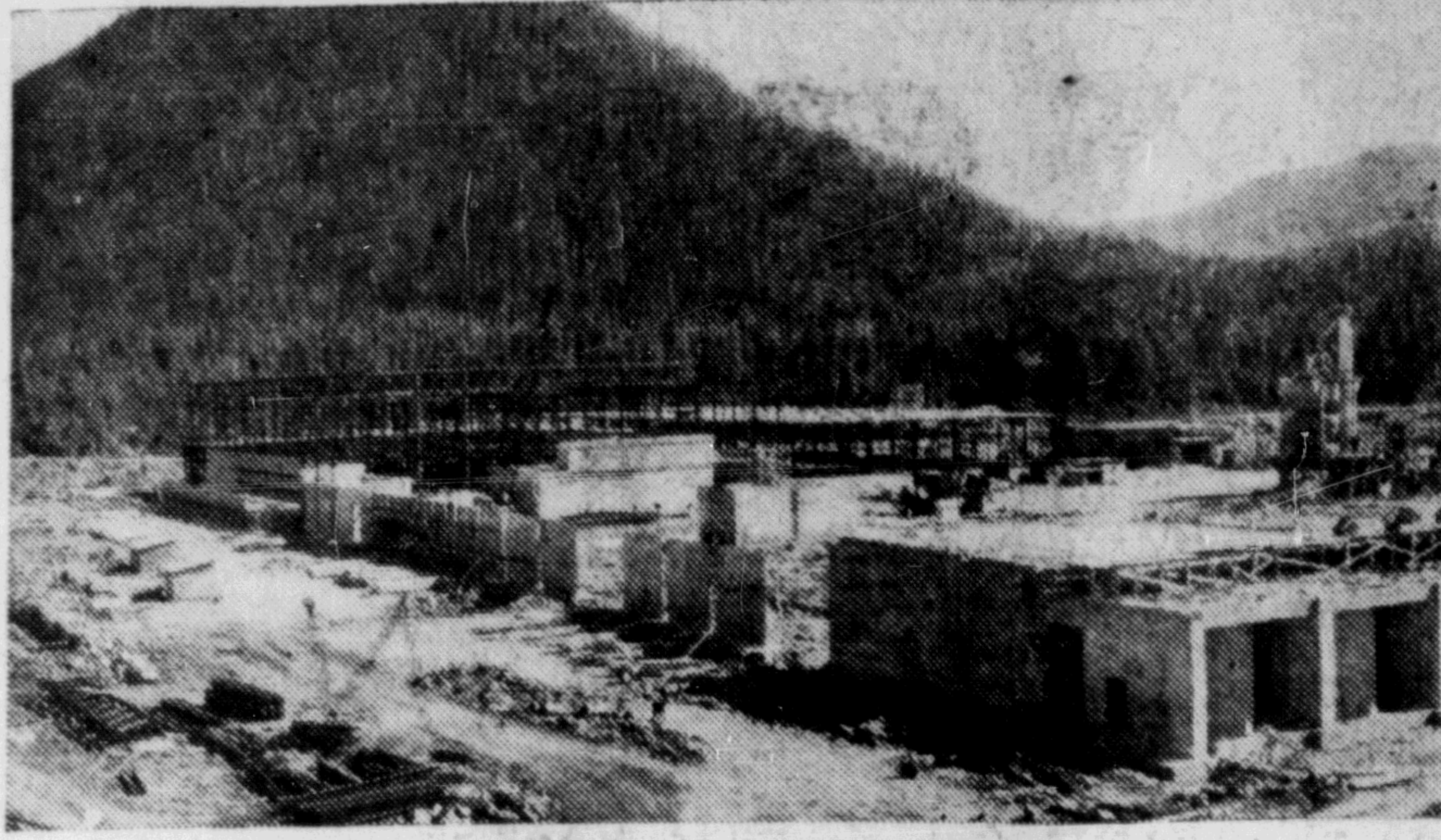
Frank Kafel, Toronto Financier, Steps Into Picture in Prince Rupert

Frank Kafel, dynamic financier of Toronto, has seen the opportunity and necessity in connection with the providing of Prince Rupert with new hotel and living accommodation and, as a result, this city should soon be provided with a fine modern million dollar hotel with upwards of one hundred rooms and an apartment of fifty or more living units.

Mr. Kafel during recent months purchased a commanding site on Second Avenue, already excavated years ago by the railway for the location of a hotel, and his latest announcement was that architects could be expected here soon to survey the ground with a view to drawing up the plans. Since visiting here in late summer, Mr. Kafel has been negotiating with the railway company for ground additional to that which he has already acquired.

While in Prince Rupert, Mr. Kafel was intrigued with the possibilities of the former United States Army administration building on First Avenue for conversion into an apartment block and recently it was announced that he had acquired the property from War Assets Corporation.

Whaling is an important industry off the Queen Charlotte Islands. The industry fell off sharply in 1943 owing to a scarcity of the mammals but of late there has been a tendency to come back.



Steel and concrete takes shape on mill buildings



The huge horseshoe dock and newly built warehouse

Photos by Wrathall

HUGE NEW INDUSTRIAL PROJECT—

Prince Rupert's Pulp Mill Moves Toward Completion

Is Focal Point for Interest of Industry
Due For Completion in 1951
(By Wallace)

Prince Rupert is today a focal point of interest to the pulp and timber industry of the North American continent. Areas contiguous to it that comprise the Naas and Skeena River water sheds are the scenes of one of the first large scale, perpetual yield forestry operations in the west.

The Columbia Cellulose Company's plant, now under construction on Watson Island, is the first major step in implementing the terms of that company's agreement with the provincial government under their Forest Management License. An examination of the agreement entered into under authority of legislation passed by the British Columbia government in 1947, shows that Columbia Cellulose agrees to manage the area for sustained annual yield and to cut and market, or use commercially, the annual yield from the reserve area.

The Watson Island plant will produce upwards of fifty thousand tons of pulp and use from 75 to 100 million board feet of hemlock, spruce, balsam and cottonwood logs per annum. Large scale logging operations are planned for next season and

it is anticipated that production operations will begin in 1951.

Hon. E. T. Kenney, minister of lands and forests, has explained that some of the conditions under which a forest area is reserved for the exclusive use of a licensee require such good forestry practice as reforestation while cutting and logging progresses, thinning and other silvicultural measures.

"Lands must be kept always productive and under crop," said Mr. Kenney who points out that should the annual cut, averaged out over a ten year period, be less than the annual productive capacity, the licensee must pay for it anyway. If the cut is more than the licensee pays a penalty and his license is liable to cancellation.

By this arrangement the allotted area becomes, in effect, a

vast "tree farm" and, in instituting an initial step in the important matter of forest preservation and sustained yield forestry practice. It was as a direct result of the recommendations of the 1944 Royal Commission on Forestry that the provincial legislature made it possible for operations of this type to establish on a sound basis with the assurance of permanency.

One of the first applications under the new arrangement was made by American interests who made it, the province of B. C. has subsequently incorporated the Columbia Cellulose Company Ltd. and entered the area on a comparatively large scale. During 1947, and 1948 they completed their first timber cruises and water tests and assembled other pertinent technical information. They acquired the large United States Army installation and deep-sea dock at Watson Island and conditioned the area adjacent to the dock for a plant site. Plant construction started in earnest in the spring of this year. C. H. Klotz, New York, is resident engineer in charge of the work.

Located about ten miles southeast of Prince Rupert on the northern mainline of the Canadian National Railways, the project

marks the installation of the most northerly pulp mill on the Pacific Coast. Working to a schedule calling for completion in 1951 little time was lost in disposing of the usual pre-construction problems of labor and material supply and organization.

With construction now in full stride one thousand employees swarm over the area and concrete walls and footings clearly define the first half-dozen buildings. Steel columns with their interlacing framework already rise above the administration and pulp-storage buildings. Dominion Bridge Company, Vancouver, are contractors for the fabrication and erection of steel. Sewer and water lines are well on their way to completion.

A major portion of the installation is the six-mile water line with its three tunnels, totaling almost a mile, designed to deliver up to 35 million gallons of water daily to the plant from Prudhomme Lake. The four-foot pipe is of treated wood-stave construction. Tunnels are concrete lined. The Vancouver contracting firm, Campbell & Bennett, have this phase of the work in hand and are making good progress despite unusual problems in muskeg and rock.

Hub of Interior—

Prince George Crossroads

Timbering Still Economic Mainstay—P.G.E. Extension And Hart Highway

PRINCE GEORGE—The triumphant scream of Prince George district sawmills still heralds lumbering as the economic mainstay of the area but this hub of the central B. C. interior will soon come into its own as a provincial crossroads.

Projection of the Pacific Great Eastern Railway, 83 miles northward from Quesnel, the delayed dream of a generation of time, will give this rich lumbering and farming community a rail link with the lower mainland but this is only part of the prospect in store.

There also is the completion of the Pine Pass Highway to the Peace River and, more distant, but equally inevitable, Prince George residents feel, the ultimate extension of the P.G.E. into the Peace River country and who knows?—possibly Alaska.

Prince George pioneers, who saw the Pacific Great Eastern limp as far north as Quesnel then wither, listened proudly a few days ago as the first spike of the extension beyond Quesnel, was

driven by construction... It was a vindication of the... Conviction that the... government, which owns... line is serious in its... to complete the line... out by the fact that work... under way on the north... of the projection. Crews... ing a right-of-way south... Prince George.

Last week's spike-driving... money did not pass... Present for the occasion... representatives of the... George and Quesnel... Trade. Their next formal... shakes will be when the... joined.

EXPENSIVE HIGHWAY... The Pine Pass Highway... has been two years... will be at least another... before completion. Its... construction mileage... complicated by high... costs but the determina... exists to complete it.

Meanwhile, the econo... Prince George's 5,000... still maintaining a sub... level, although it is con... under its lumber-fed pe... years ago. Many of the... lumber operators, caught... inexorably rising costs... stabilizing market, has... under.

Population turnover... considerable because of... in the lumber market... pleasing feature of the... trend is the movement... substantial immigrant body... up farms in the distric... recognized as a real... wealth.

With these varied... Prince George is looking... to a real growth, a sub... advancement which will... tinent-wide meaning... ready-ringing claim... City of B. C.

That section of the... extending from the... boundary to Prince Rup... better known as Central... Columbia contains an... 900,000 acres of arable... could be divided into... omic farm units. Al... there are estimated... farmers in the area. Ag... opportunities are in ce... duction, hogs, dairy... farming.



We Buy, Process and Ship All Varieties of Alaska Fish

Rupert Fish Company, Incorporated

(Inc. in State of Washington)

INDEPENDENT BUYERS AT THE PRINCIPAL PORTS OF SOUTHEASTERN ALASKA AND ASSOCIATED WITH INDEPENDENT GROUNDS BUYERS ON THE SALMON GROUNDS OF WEST COAST AND PORT ALEXANDER, ALASKA.

"RUPERT BRAND"

Products Distributed

in Canada by ...

Parent Company

British Columbia Packers Ltd.

VANCOUVER, B. C.

and Subsidiary:

Canadian Fish & Cold Storage Co. Ltd.

PRINCE RUPERT, B. C.

SUBSIDIARY COMPANIES

RUPERT FISH CO., INC.,

229 - 231 Front St.,
New York City, N.Y.



THE FOREST CITY FISH CO.,

2556 - 33rd St. East,
Cleveland, Ohio.



ROBBINS INC.,

362 West Kinzie St.,
Chicago, Ill.