

Best Wishes To Lindsay Motors Limited

Open Spacious New Garage and Service Station-- Largest in Northern B.C.

MODERN FACILITIES DESIGNED TO ADEQUATELY MEET NEEDS FOR MANY YEARS TO COME

Climaxing years of planning and months of construction, Lindsay Motors opened their new garage and service station today at the corner of Second Avenue and First Street, making available to Prince Rupert motorists one of the largest and finest automotive plants in the province.

The spacious, lofty building, generously lighted and superbly equipped, is designed not only to meet the needs of today but those of years to come.

Although the fine building was opened today for public inspection, the president of Lindsay Motors Limited, John S. Lindsay, explained that work of finishing the garage will be continued for several more days. Congratulations and best wishes upon the opening have been received from many firms that were associated with the construction of the building and those which will do business in

Heated Storage and Outdoor Parking

In addition to providing an excellent mechanical repair service and gasoline sales service, the garage will offer heated storage accommodation. Immediately east of the building will be a hard surfaced parking lot measuring 46x100 feet.

The attractive new building is eye-arresting. Providing for a drive-in, under a canopy, the southwest corner of the garage and service station recedes in an arc. This architectural feature provides for an interesting effect above the canopy, where corrugated aluminum is combined with fireproof Dover

Large Building Has 19-Foot Ceiling

Because of the driveway, all automobiles will be gassed on the garage's own property. The clearance between the gas is-

white shingles with interesting results.

For the most part, the wooden frame building is covered with Insul-Brick siding made by Ace-Tex Corporation.

Under the canopy, which extends out 20 feet from the building and is well supported by two eye-beams and an upright steel pipe, are two B.A. Oil Co. gasoline pumps. These pumps are fed from two 1,000-gallon tanks made of 5/16ths inch steel, welded and rivetted. Hanging from the canopy are two compressed air outlets for the public's use.

and the building is 14 feet. The large building measures 114 by 97 feet and the inside height of the ceiling is 19 feet.

The over-all height is 32 feet.

In the mechanical service department, which takes the shape of a large letter "L" and enjoys daylight through 840 separate panes of glass on four walls, not a single pillar rises to present difficulties in moving automobiles and equipment. Because of the use of 114-foot Warren-type trusses, all ring-cut, no pillars were required in the construction.

The floor is composed of reinforced steel concrete, fabricated in 12x16-foot squares with expansion joints. In the service shop it is sloped two ways to

Equipped With Derrick Steam Car Cleaner

Just inside one of the doors a Wagstaff hydraulic hoist is countersunk in the floor, while on the other side, to the right on entering the two coors is the washing rack equipped with a Kerick steam car cleaner.

On the other side of the building is located a 30-foot greasing pit, well-lighted with vapor-proof lights for safety. Close by are latest model portable lubricating motor testing and battery charging machines.

Hot Water Heating System Provided

Heat is provided by an Aldrich Heat-Pak hot water system in conjunction with downbeat heaters equipped with explosion proof motors.

The front doors, off the drive-in, usher you into the main office, to the right of which is the one-car display room. Large display windows afford plenty of light during the day.

Behind a combined reception and sales counter is a large stock room, and alongside are the offices of the general accounting department and the general manager, S. J. Hunter.

The front office and service department are connected by large doors through which automobiles may pass easily to and from the display room. Nearby are well-appointed rest rooms for men and women.

ward a drain.

An exhaust system also has been built into the concrete floor to remove all gases from running automobiles. In this way carbon monoxide gas is prevented from accumulating in the garage.

Automobiles and trucks are admitted to the garage through two large sectional doors of the overhead lift type, constructed by Richard Wilcox of Toronto. These doors on First Street, are wide enough to conveniently accommodate the largest buses and trucks and are about 19 feet high.

An overhead track, equipped with pulleys and chains, runs from the big doors down the entire length and the width of the building, greatly facilitating the moving of heavy loads. The overhead track is 175 feet in length.

Along the well-lighted north wall are numerous mechanics' bays. Compressed air and electrical conduit pipes have been installed along three sides to simplify the work of the technicians.

WRECKING-TOWING TRUCK IS BEST

All equipment for Lindsay Motors Limited was selected with special care and consideration including the new Holmes "Traffic King" wrecking and towing truck. This type of service unit is nationally accepted as foremost in its field. It is fast, safe and efficient.

The unit is mounted on a Dodge two-ton 160-inch wheelbase chassis and is equipped with a towing cradle to safeguard against front end damage in towing.

SUPER CUSHION TIRES PROVIDE EXTRA COMFORT

Dodge and DeSoto passenger cars are now equipped with the new Super Cushion Tire as standard equipment. It is a larger, softer tire which, according to Chrysler engineers, produces an unprecedented degree of comfort riding with added safety features, greater handling ease, a reduction of general wear and tear on the car and less driver fatigue.

The tire is inflated to but 24 pounds of pressure—and only 24 pounds pressure—as against 28 in previous types, a decrease of approximately 14 per cent. Its increased dimensions permit up to 27 per cent more air volume, according to size. This results in "softer" air, the obvious basis of a softer ride.

RETAIN SAFETY RIM WHEELS

In using the Super Cushion Tire, Chrysler retains its famous Safety Rim Wheels, which have proved to be an important factor in preventing serious accidents.

These wheels have a rim with a bead seat which makes it practically impossible for a flat tire to twist, crush down into the centre of the rim or pull off, even though the deflation occurs while travelling at high speed.

The combination of the new tire with Chrysler's Safety Rim Wheels, scientific weight distribution and advanced spring design and construction is expected to establish new standards for comfort and safety in motoring—to produce, in fact, an entirely new ride.

John Lindsay President of Lindsay Motors

Son of Pioneer Prince Rupert Business Family Heads New Local Firm

President of Lindsay Motors Limited is John S. Lindsay, son of a pioneer Prince Rupert family, which has long been identified with automobile and transfer business here. He was born and educated in this city, and during the Second World War served with the R.C.A.F.

S. J. Hunter, associated with the automotive business in Prince Rupert for many years, is general manager.

Martin Van Cooten is in charge of the general accounting office, while "Mike" Sanddyke supervises the stock room.

General service manager is C. Edward Barnsdale, who was trained in leading garages and service stations in Victoria. During the Second World War he organized and supervised army repair depots for Allied forces. For a time he served in India. Mr. Barnsdale came to Prince Rupert recently to assume the position of general service man-

WORKMANSHIP OF VARIOUS FIRMS IS APPRECIATED

Many firms were identified with the construction of the city's newest garage, and they are being thanked by Lindsay Motors Limited for their outstanding workmanship.

The firms and their contributions are: North West Construction Limited, building; Northern B. C. Power Co. Ltd., electrical work; Prince Rupert Roofing Company, roofing construction; Philpott, Eviatt & Co. Ltd. and Albert & McCaffery Ltd., building supplies; Fred Scadden, painting; J. L. Blain, parts bins and fixtures; Gunnar Selvig, rock blasting; James Bremner, plastering; Barr & Anderson, plumbing; Thom Sheet Metal Ltd., sheet metal work.

Thanks of Lindsay Motors also is being extended to Dibb Printing Co., S. D. Johnston Co., Ltd., and G. P. Tinker & Co. Ltd.

ager for Lindsay Motors Limited.

A. E. Field is secretary-treasurer of the company. Construction of the building at Second Avenue and First Street was supervised by A. D. Ritchie.

★
OUR
BEST WISHES
— to —
Lindsay
Motors
Ltd.
ON OPENING
THEIR NEW
BUILDING
•
We were pleased
to do the painting
•
FRED SCADDE
324 Sixth Street
PHONE GREEN
★

Congratulations

LINDSAY MOTORS LIMITED

WE WISH YOU EVERY SUCCESS IN YOUR NEW BUILDING WHICH WE HAVE BEEN PROUD TO BUILD

Northwest Construction Limited

Phone 563
STONE BUILDING
General Contractor
PRINCE RUPERT, B.C.



Wishing Lindsay Motors Limited

Every Success

AND

Congratulating Them

ON THEIR FINE BUILDING AND FACILITIES



WE ARE PLEASED TO BE ASSOCIATED WITH THEM IN SERVING THE MOTORING PUBLIC

LINDSAY MOTORS LIMITED

Handle British American Oil Co. Ltd.

Gasoline --- Oils --- Lubricants

Exclusively

British American Oil Co. Ltd.

Cow Bay

Prince Rupert

Phone 382

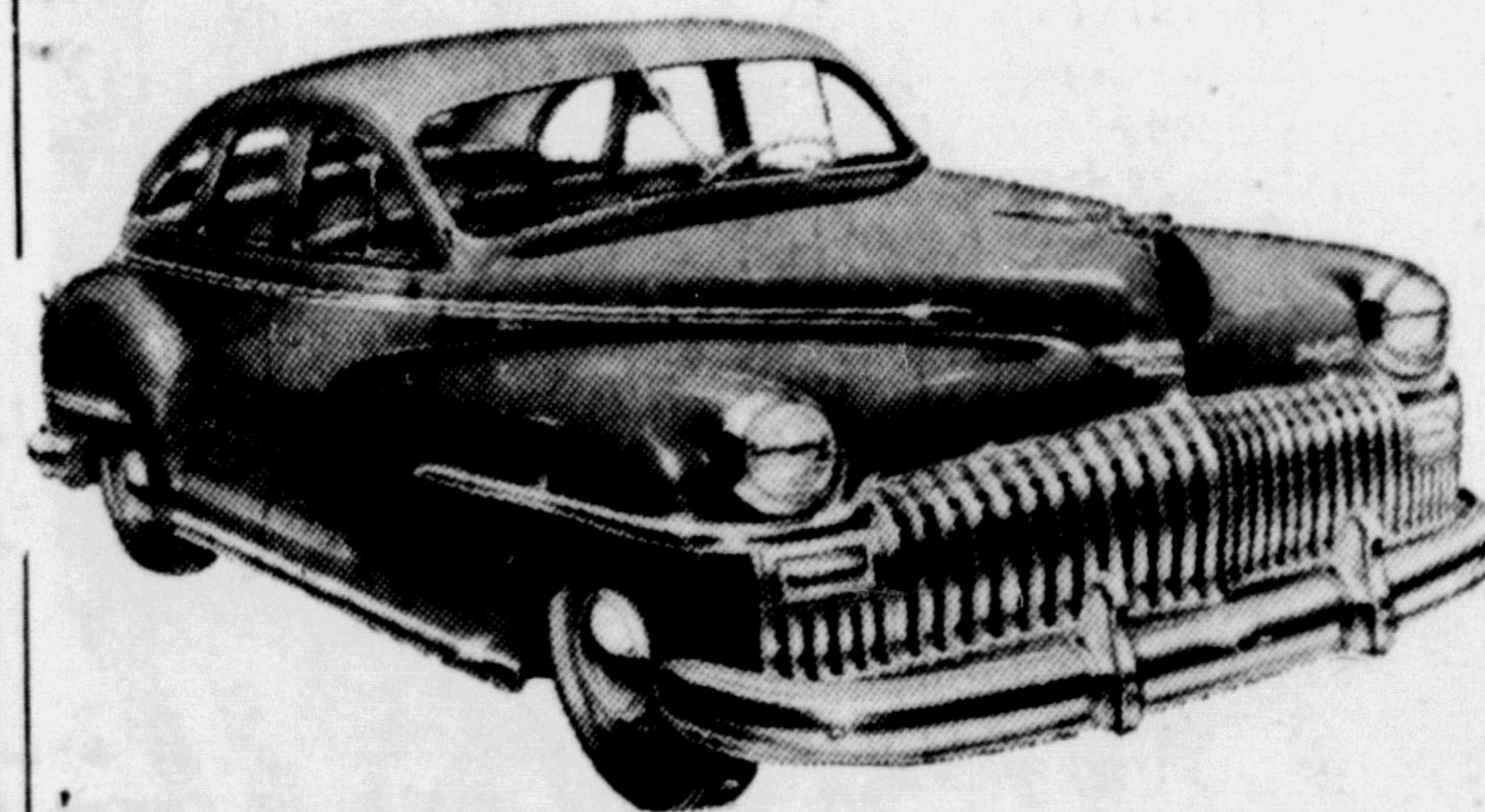


Announcing the Opening Today of LINDSAY MOTORS LIMITED

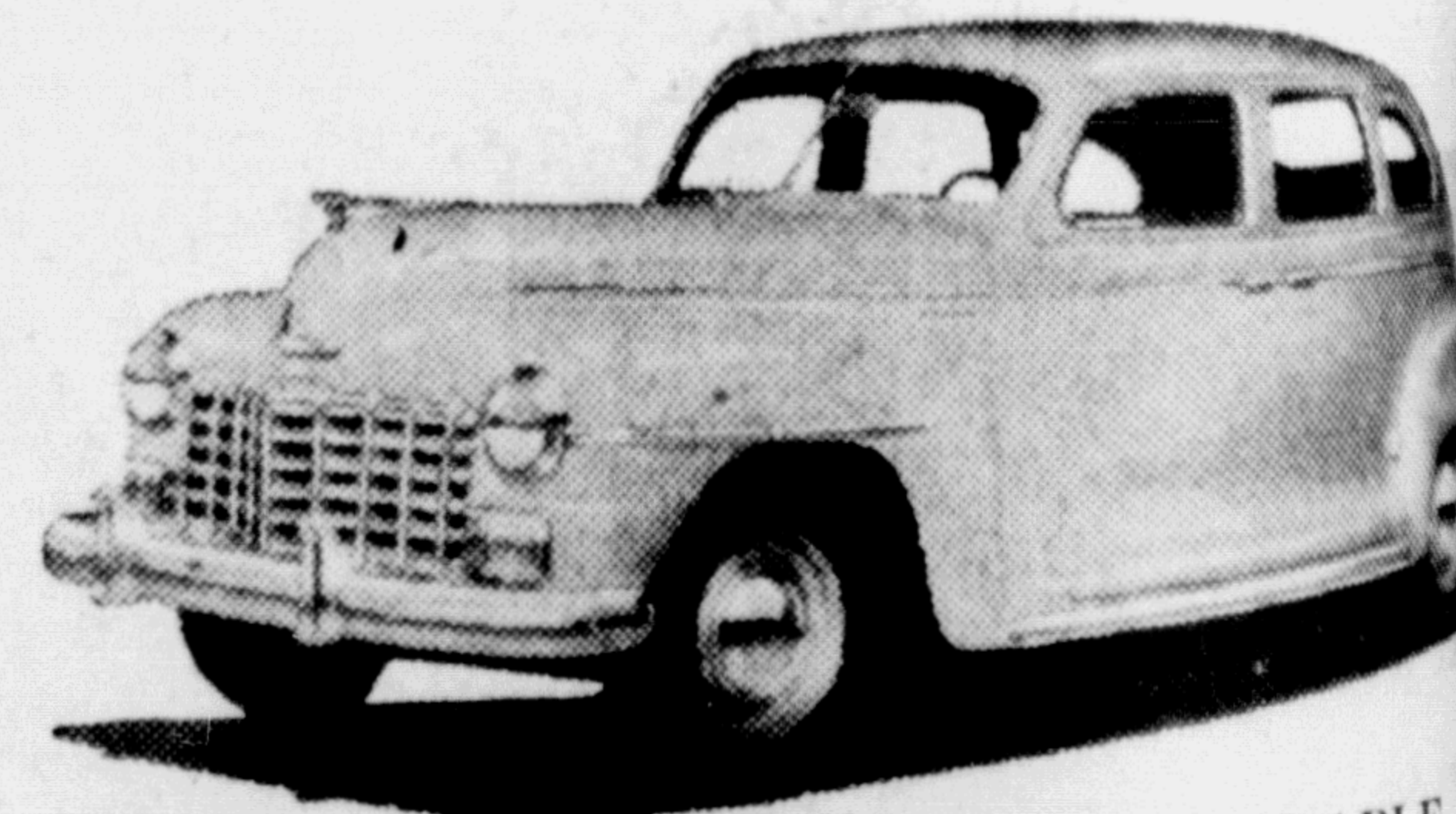
NEW MODERN

Garage & Service Station

Second Avenue and First Street



DESOTO—BEAUTY AND POWER



DODGE—EVER DEPENDABLE

Lindsay Motors Limited, in announcing the opening of their large, modern, and well-equipped garage and service station, are able to offer the motoring public the quickest and most efficient service obtainable.

We invite you to inspect our fine building and facilities, and to see the 1948 DeSoto and Dodge automobiles and Dodge job-rated trucks, for which we are district representatives.

It is our sincere wish to prove of service to you.

NORTHERN BRITISH COLUMBIA'S MOST MODERN AND SPACIOUS
AUTOMOTIVE GARAGE

LINDSAY MOTORS LIMITED

Second Avenue and First Street

PHONE 866

