

RUPERT MENS AND BOYS STORE

Sale of Men's And Boy's Wear Now

Big Reductions!!!

RUPERT MENS AND BOYS STORE

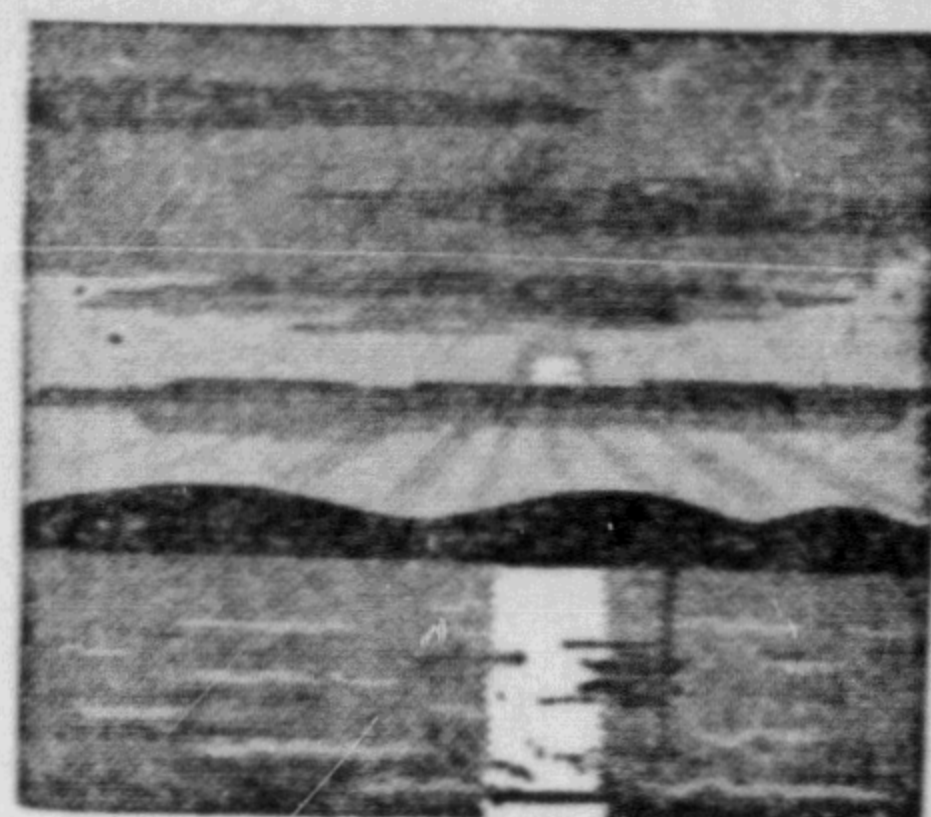
COMBINE FUN, BIBLE STUDY

Much impressed with the character of the work being carried out under interesting and pleasant conditions is Mrs. John Linney of this city who has returned from a visit to Miss Gertrude Mitchell's Bible Camp on Braun's Island at Terrace. With Mrs. Cecil J. Carter, of Prince Rupert in charge, a group of 50 girls from various parts of the district, as far west as Massett and as far east as Vanderhoof and including fifteen from Prince Rupert, is at present in Miss Mitchell's camp.

Preceding the girls' camp was a boys' camp recently.

The girls range in age from 6 to 14 years. The well organized proceedings start off each morning with devotional exercises followed by camp duties. One hour each morning and evening are devoted to Bible Study sessions and choral singing. Nor is healthful outdoor recreation overlooked including such diversions as swimming in the river. The girls also gather their own fruit, berries and vegetables from Miss Mitchell's garden.

Assisting Mrs. Carter are Miss Anna Beketov of Prince Rupert,



Net Fishing Being Curtailed—Western Trader Leaves Local Dry Dock

Conservation measures resulted in the closing of net fishing in several areas in this fisheries district this week-end, some indefinitely, some for specified periods. Sockeye gillnetting on the Naas and Skeena has terminated for the season.

Closing of the Skeena to sockeye gillnetting at 6 p.m. Friday brought an end to a waning season which reached its peak a week ago when the crest of the migrating population passed the river mouth. This week has brought anti-climax to the fishermen.

Catches this week dropped to about 25 fish per boat daily after averaging 100 last week when the run reached its peak. During the early part of the season, the catches were irregular

Miss June Warner of Terrace, who is awaiting an assignment to foreign missionary work abroad, Mrs. N. Bedford of Prince Rupert and senior girls. The camp breaks up on August 18.

due to weather and other factors. Sockeye fishermen on the whole were less successful this year than in 1948.

The Skeena will reopen to gillnets at 6 p.m. August 21 when 6½-inch mesh will be allowed.

This net is too large to catch sockeye and is designed for coho.

The Naas River, which has been only fair as far as gillnetters are concerned, closed at 6 p.m. Friday until further notice. Other areas which closed to sockeye gillnets until further notice are Principe Channel, which closed at 6 p.m. Friday and the Aristazabe and Price Islands and Higgins Pass regions, which closed Thursday evening.

The northern section of the

Waterfront -- Whiffs

Butedale seine area will close to all net fishing with the exception of Gardner Canal which will remain open to sockeye gillnets. The Butedale section is the first of the seine areas to be closed this summer for conservation reasons.

Bulk of the seine catch on the north coast has been pink salmon, and results have been uniformly good throughout the district.

The Naas seine area, where 26 boats have been operating, reported between 2,000 and 3,000 fish daily per boat, while in Ogden Channel, nine boats have averaged between 1,500 and 2,000 fish daily. Whale Channel gave forth a daily catch similar to Ogden Channel this week. Seventeen boats operated there.

Averages in the Bella Bella-Bella Coola area on Monday were 3,000 fish per boat. This dropped to about 1,500 on Tuesday and held that level for the rest of the week. There are about 40 boats in the two areas.

Trollers in Caamano Sound reported good catches this week, bringing in between 300 and 400 pounds daily of pinks and springs.

The Seattle freighter Western Trader, which went into dry dock here on August 1 after damaging her bottom and propellers on a reef in Grenville Channel, sailed at 5 o'clock this morning for Ketchikan with her cargo of dry foodstuffs.

The Western Trader scraped a rock at full speed, knocking off a number of rivets from the after part of her hull. One propeller was severely damaged and the other one bent to a lesser extent. She was able to make port under her own power.

The tug Shinn left port here at 7 p.m. Friday with her cargo in tow on her regular run between Prince Rupert and Haines. The scow carried 12 carloads of perishable food for the interior of Alaska.

The 24-foot cruiser Evelinda

of Tacoma, one of the participants in the Capital-to-Capital cruiser race last month, arrived here southbound Friday. The Evelinda carried her skipper, Arvid Jensen of Tacoma and two passengers, Albert B. Jensen of Portland and Andrew Jensen of Big Harbor, Washington.

The 343-foot private yacht Corsiar, now cruising the Alaskan coast, sailed into Tracy Arm recently at a minus three tide. Drawing 21 feet, the Corsiar had 16 feet of water under her keel. This was the first known time a vessel the size of the Corsiar had ever entered these waters. There was floating ice in the bay and, because of this, the ship was unable to sail any nearer than three miles to the Sawyer Glacier. Captain H. E. Nedden said the glacier was a notable sight and much more spectacular and beautiful than Glacier Bay. When the cruiser left Tracy Arm there was a strong tide running. It was because of this that the buoy, marking the channel kept bobbing.

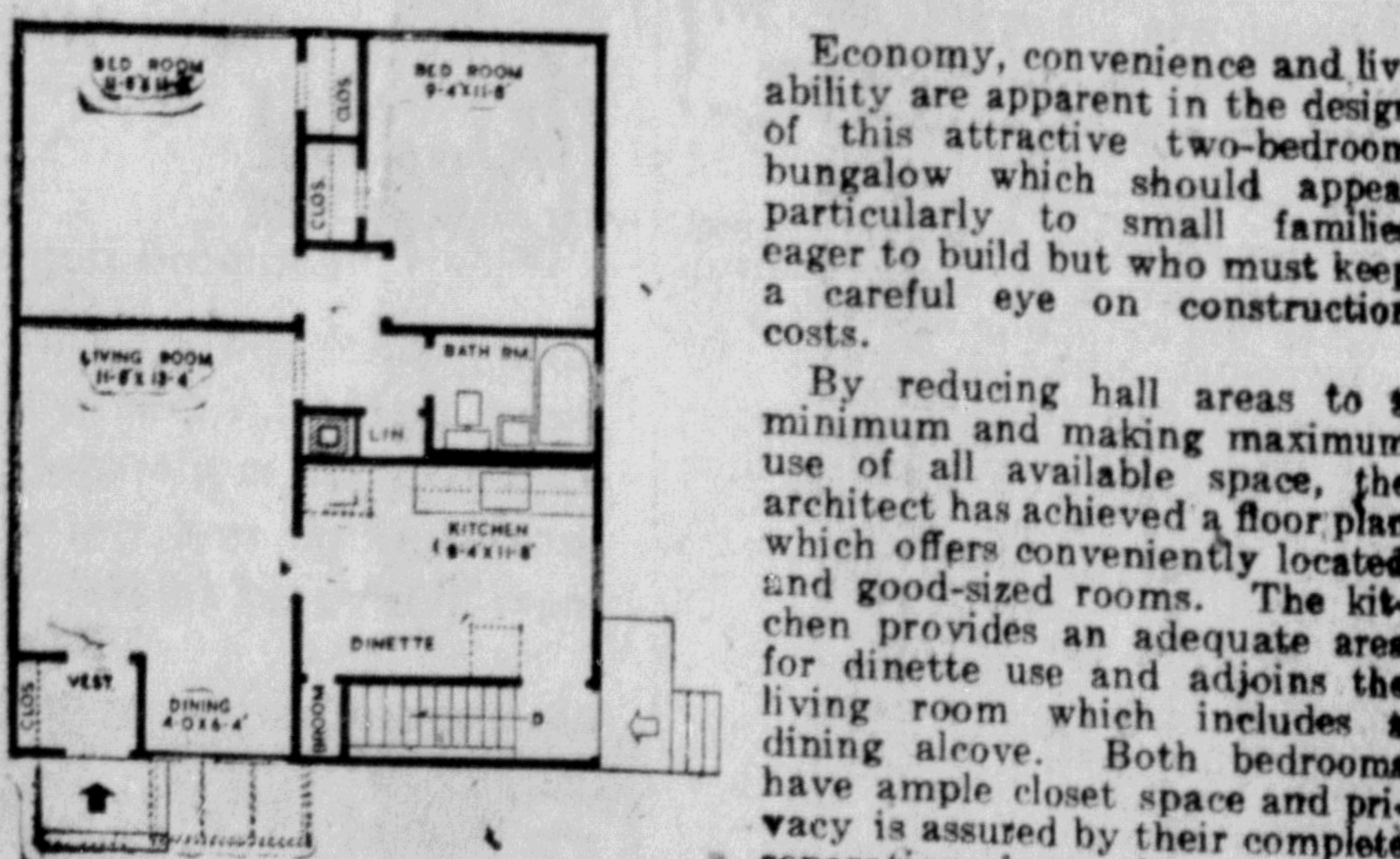
CFPR Radio Dial 1240 Kilocycles (Subject to Change)

- SATURDAY—P.M.**
- 4:30—Malcolm and LeFrois
 - 4:45—Unesco World Review
 - 5:00—Music from the Films
 - 5:30—Top Bands
 - 6:00—CBC NEWS
 - 6:10—Recorded Int.
 - 6:30—Musical Varieties
 - 7:00—London Dances
 - 7:30—Songs by Simone
 - 7:45—O'Connor Trio
 - 8:00—Red River Barn Dance
 - 8:30—Current and Choice
 - 9:00—Bob Lyons Orchestra
 - 9:30—Musical Etchings
 - 10:00—CBC NEWS
 - 10:10—CBC News
 - 10:15—Dal Richards and Orch.
 - 10:30—Plantation Jubilee
 - 11:00—Weather and Fish Arrivals
- SUNDAY—A.M.**
- 8:30—Recital
 - 9:00—BBC News and Commentary

SHERIFF'S SALE

IN THE COUNTY COURT OF PRINCE RUPERT
HOLDEN AT PRINCE RUPERT
BETWEEN
LEMUEL RAPP, Plaintiff and DUNCAN C. WING, Defendant.
Under and by virtue of a Warrant of Execution issued from the above Court and to me directed against the goods and chattels of the Defendant DUNCAN C. WING, I have seized:
1 Ford Truck, model OIC Engine and serial numbers 1C9344, Registration number 213975, License Plate No. C17734, mounted on trailer with pneumatic tires, and 1 Roofing tar heating kettle
and on Monday, August 22nd, 1949, at the hour of 10 o'clock in the forenoon, at my office in the Court House, Prince Rupert, B. C., I will offer for sale by public auction all the right title and interest of the defendant in the above goods.
Terms of sale, cash, and this sale is subject to the Social Security and Municipal Aid Tax.
Dated at Prince Rupert, B. C., this twelfth day of August, 1949.
M. M. STEPHENS, Sheriff of the County of Prince Rupert. (195)

N.H.A. DESIGN-OF-THE-MONTH



Economy, convenience and livability are apparent in the design of this attractive two-bedroom bungalow which should appeal particularly to small families eager to build but who must keep a careful eye on construction costs.

By reducing hall areas to a minimum and making maximum use of all available space, the architect has achieved a floor plan which offers conveniently located and good-sized rooms. The kitchen provides an adequate area for dinette use and adjoins the living room which includes a dining alcove. Both bedrooms have ample closet space and privacy is assured by their complete separation from the remainder of the house.

The rectangular shape of the house and the back-to-back plumbing arrangement for the kitchen and bathroom are factors which result in substantial savings in construction costs.

The entrance to the house is protected by a flat roof which could be extended to form a sun shade over the dining alcove window. A closet is located off the vestibule.

As the gable end of the house faces the street, this house is particularly adaptable to a narrow lot. While wood finish has been used on the house illustrated, brick, veneer, stucco or any other desired outside finish could be used. Outside dimensions are 30 feet by 24 feet 6 inches and the area, for estimating purposes, is 730 square feet.

One for the MONEY Two for the SHOW!

And what a show! . . . See it, feel it, hear it all this year! . . . the tom-tom beat of the Gayway . . . the ruff and clatter of thrill rides . . . the blare of wild music and the shuffling crowds . . . the full musical extravaganza featuring Charlie McCarthy, Edgar Bergen, Mortimer Snerd and a host of gorgeous girls August 24th to August 27th . . . the spectacular free outdoor shows . . . and the strange excitement of the P.N.E. Shrine Circus, with wild jungle beasts and daredevil aerial acts August 29th to September 5th. Bigger, brighter, better than ever, this year's P.N.E. will present a thrilling march of progress in Science and Industry, Home Arts and Hobbies, Manufacturing and Agriculture . . . Don't miss this glittering spectacle of

British Columbia's growth and achievement . . . eleven magnificent days, packed with interest and excitement! Plan to take time . . . make time . . . arrange your Vancouver holiday at Exhibition time.

REMEMBER THE DATES!
AUGUST 24 TO SEPTEMBER 5 INCLUSIVE

let's all go to the..



PACIFIC NATIONAL EXHIBITION

REDUCED RAIL AND BOAT FARES TO THE P.N.E.
See your Travel Agent.

EXHIBITION PARK • VANCOUVER • AUGUST 24 TO SEPT 5

H. M. KING, President

V. BEN WILLIAMS, Gen. Mgr.

NOW AVAILABLE



LOOK FOR THE NEW RED AND WHITE GOLD SEAL LABEL.

Salt Lake Ferry Daily Service Except Monday

SCHEDULES
Tuesday — Leave Cow Bay Floats 4, 5, 7 and 8 p.m.
Wednesday, Thursday and Friday — Leave Cow Bay Floats 2:30, 4, 5, 7 and 8 p.m.
Saturday—Every hour starting at 11 a.m.
Sundays—Continuous service commencing 11 a.m.
Last boat leaving Salt Lake at 10 p.m.
— Phone —
GREEN 391 or BLACK 926



PRINCE RUPERT BOWLING ALLEY

OPEN DAILY FROM 3:30 P.M. TO 11 P.M.
Saturdays — 12 Noon to 12 Midnight.
PHONE RED 709
"BOWL FOR HEALTH"
FREE INSTRUCTION

WRATHALL'S PHOTO FINISHING
Developing, Printing
Enlarging
QUICK SERVICE
Amateur and Professional Supplies

SMITH & ELKINS

PLUMBING AND HEATING

Phone 174 — P.O. Box 274

TODAY 6:55 - 9:05 in "A CONNECTICUT YANKEE"

SUNDAY MIDNITE

CHARLIE CHAN

'CHINESE RING'

MON. TO WED.

A PERFECT CAST IN A SENSATION

GREGORY PECK ANN TODD

CHARLES LAUGHTON CHARLES COBURN

ETHEL BARRYMORE

"THE PARADISE CASE"

MATINEE

WEDNESDAY 2 P.M.



HOLIDAY PACK THE BAG WITH GOOD THINGS TO EAT

Terrace Meat Market George E. Peters, QUALITY — SERVICE

- 9:15—Quiet Music
- 9:59—Time Signal
- 10:00—B.C. Gardener
- 10:15—Frosia Tells a Story
- 10:30—Music in Worship
- 10:45—Bible Stories
- 11:00—CBC News
- 11:03—Songs and Singers
- 11:30—Religious Period P.M.
- 12:00—CBS Symphony Orch.
- 1:30—Church of the Air
- 2:00—Capital Report
- 2:30—Music I Like
- 3:00—Musical Pictures
- 3:25—CBC News
- 3:27—Weather Report
- 3:30—Harmony Harbour
- 4:00—Week-End Review
- 4:15—John Fisher Reports
- 4:30—Les Chansons de Paris
- 5:00—Record Album
- 5:30—Little Symphonies
- 6:00—CBC News
- 6:10—The Old Songs
- 6:30—Salvation Army Program No. 9
- 7:00—Summer Theatre
- 7:30—Summer Symphonies
- 8:00—Al Bollington, Organist
- 8:30—Winnipeg Sunday Concert
- 9:00—Summertime
- 9:30—Vesper Hour
- 10:00—CBC News
- 10:10—CBC News
- 10:15—Kerry Wood, Wpg.
- 10:30—Prelude to Midnight
- 11:00—Weather and Sign Off

MONDAY—A.M.

- 7:00—Musical Clock
- 8:00—CBC News
- 8:15—Morning Song
- 8:30—Music for Moderns
- 8:45—Little Concert
- 9:00—BBC News & Comty.
- 9:15—Morning Devotions
- 9:30—Sunrise Serenade
- 9:45—Coffee Time
- 9:59—Time Signal
- 10:00—Deirdre McEachran

HOLLYWOOD CAFE

MOST UP-TO-DATE CAFE IN THE CITY

OPEN FROM 11:30 A.M. TO 3:30 A.M.

We Specialize in Chinese Dishes

CHOP SUEY—CHOW MEIN

For Outside Orders PHONE 133



TRAVEL

THE EASY, COMFORTABLE WAY

Regular Trips . . . To Queen Charlotte Island Point (Daily, Except Sunday)

To Alice Arm, Stewart (Every Thursday)

CHARTER FLIGHTS THROUGHOUT THE DISTRICT

For Information and Reservations, Call QUEEN CHARLOTTE AIRLINES LTD.