

WALLACE'S DEPT. STORE
PRICES SLASHED
Expansion Sale
Now in Progress
Storewide at
WALLACE'S of Course

JOHN H.
BULGER
Optometrist
John Bulger Ltd.
Third Avenue

OUR KNOW-NOW SAVES YOUR MONEY
WILFORD ELECTRICAL WORKS
Motors and Generators Rewound and Repaired
MOTORS
BOUGHT AND SOLD
New and Rebuilt Generators
6 - 12 - 32 volts
Box 1397 Ph. Blue 391

FOR HIGH CLASS PRINTING IN 1952
As Always
PLACE ORDERS NOW
Dibb Printing Co.

it's COOL
KEEP WARM ELECTRICALLY
"ELECTRIC HEATERS"
600 watt radiant 5.75
1000 watt radiant 7.75
1000 watt radiant 10.75
1100 watt radiant 16.20
G.E. Fan-type 19.50
Log Fireplace—1200 watts 40.55
Northern B.C. Power Co.
Besner Bldg. Ph. 210
Prince Rupert, B.C.

Long Liners Paying Off

Lockport Skippers Show How

OTTAWA — Two Lockport N.S., fishing captains have been showing the traditional inshore fishermen of Bonavista, Newfoundland, how to make more money by going into deeper waters with long-lining operations.

Dr. W. Templeman, director of the Newfoundland Fisheries Research station, told the annual meeting of the Fisheries Research Board of Canada here how the educational program conducted by the Board for the inshore fishermen had paid off.

The success of the 1951 experiments already had induced two local fishing crews to switch from inshore to long-line methods.

The two Lockport fishing captains engaged for the work were Captain Russell Decker with his 42-foot open boat "O'many O" and Captain Gordon Hemeon with his 51-foot decked boat "Miss Osborne." When the "Miss Osborne" was destroyed by an explosion and fire last August, Captain Hemeon used Newfoundland schooners.

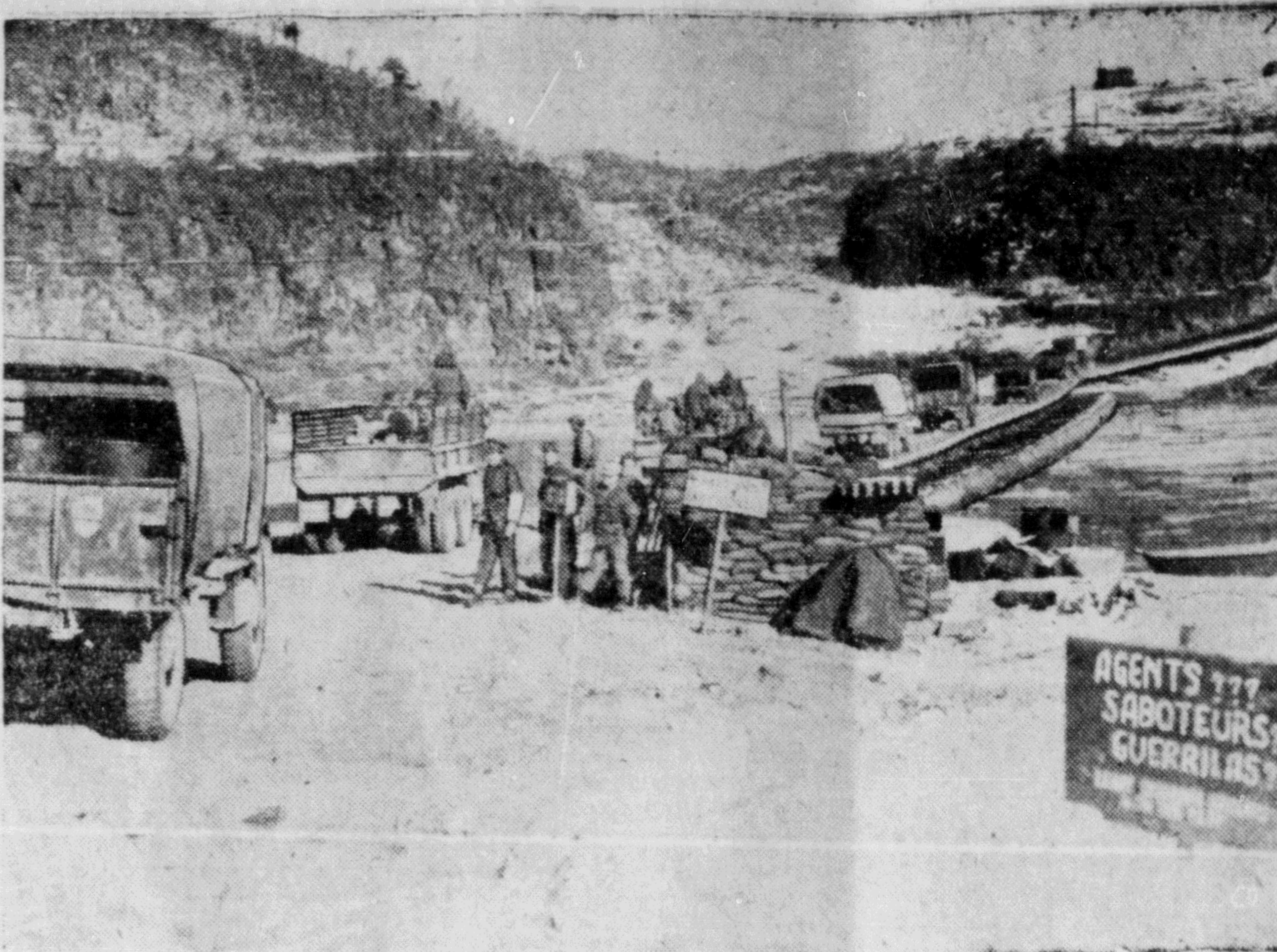
Between June 9 and October 31, said Dr. Templeman, the "O'many O" with a crew of three, caught a total of 342,000 pounds of marketable fish, including 149,000 pounds of cod. In the same period Captain Hemeon with his four-man crew caught 365,000 pounds of fish, including 339,000 pounds of cod. Without the fire aboard the "Miss Osborne" the latter's catch could have reached 450,000 pounds of marketable fish.

The returns of those taking part in the long-line experiments have proven considerably higher than those of the inshore fishermen, Dr. Templeman said. It was probable that the long-line method would become the established means of fishing at Bonavista before long, to replace the traditional inshore fisheries, he told the meeting.

STEAMER
Prince George
SAILS FOR
Vancouver
and Intermediate Ports
Each Thursday at 11:15 p.m.
For KE'CHIKAN WEDNESDAY MEDNIGHT
Luxury at Low Cost
For Reservations Write or Call
CITY OR DEPOT OFFICE
PRINCE RUPERT, B.C.

CANADIAN NATIONAL

UNION STEAMSHIPS
SUNDAY ss. Chilcotin 8 p.m.
TUESDAY ss. Camosun 12 noon
ALICE ARM, STEWART AND PORT SIMPSON
Sunday, Camosun, 11 p.m.
FOR NORTH QUEEN CHARLOTTE ISLANDS
February 1 ss. Chilcotin midnight
FOR SOUTH QUEEN CHARLOTTE ISLANDS
ss. Chilcotin January 25
FRANK J. SKINNER
Prince Rupert Agent
Third Avenue Phone 568



FRONTLINE CHECK POINTS—Careful watch on all road traffic moving to or from the front lines in Korea is maintained by Canadian and British army provost personnel in the Commonwealth Division. Movement of North Korean agents and saboteurs has been a major problem with United Nations troops. At this check point, the large sign reads: "Agents? Saboteurs? Guerrillas? Leave unknown Koreans with the M.P." (from National Defence)

Red Rose Shipping

Hazlet Property Starts Delivering \$6,500,000 of Tungsten Concentrates

Initial shipment of tungsten concentrates from the Red Rose Mine of Western Uranium Cobalt Mines Limited is now on the way from Hazelton to Vancouver.

This is first performance under the company's contract to supply 1,250 tons of concentrates worth \$6,500,000 at its present market price for tungsten.

There is an excellent crew on the Red Rose and steady increase in production may be expected, Charles M. Campbell, Jr., mining engineer in charge, says. He said also there is a competent, hard-working crew on the Rocher de Boule copper-gold-tungsten mine where all work is now centered on completing installation of a 200-ton daily concentrator.

Walter Stephens, metallurgist, associated with Mr. Campbell in directing initial milling at Red Rose and mill installation at Rocher de Boule. It is announced that the superintendent of one of the largest milling corporations in B.C. has accepted an offer from Western Uranium to be in charge of both mills.

Timing in of the Red Rose mill started December 1, when Mr. Campbell took charge. Most of December was spent in making necessary adjustments and re-organizing the camp. Actual daily production started December 27. Operating on ore from the lowest grade stopes in the mine, seven tons of concentrates worth approximately \$5,000 per ton were produced by January 16, despite intervening holidays and weather of the most severe character. This performance was well in line with expectations for the low grade material handled. The management regards success of the operation assured.

Ore is now being drawn from three stopes resulting in a higher average grade and the daily rate is up to 40 tons. Unless unusually severe weather interferes with plans, the managements expects the mill will shortly be handling 75 to 80 tons of ore daily and states that it will be brought up to capacity of 150 tons daily as soon as possible.

Meantime, at the 40-ton rate the mill is producing half a ton of concentrates daily. Additional equipment now being installed will appreciably improve the rate of recovery.

PAY AT HAZELTON
Under contract with Derby & Co., London, England, Western Uranium is being paid for the first 25 tons of concentrates when the tungsten bearing material is loaded in railway cars at Hazelton. The net return to the producing company at present market amounts to approximately \$5,000 per ton, f.o.b. Vancouver. On this basis the seven ton shipment now enroute has netted the company \$35,000. Sampling at point of shipment showed tungsten content exceeded Derby & Company's specifications, officials report. The state also that for future sales Western Uranium has a number of offers on even more favorable terms.

Mr. Campbell, B.C. mining engineer who has had a great deal of experience in managing mines in Western Canada, including 7 1/2 years in charge at Siscoo Gold Mine, says he bases optimism regarding progress from now on chiefly on the excellence of the present crew and on hope for reasonable weather conditions.

AT ROCHER DE BOULE
At Western Uranium's Rocher de Boule mine, Dick Bater, superintendent, reports that good progress has been made in installation of mill machinery. A

Named Chief For Kitimat

Col. Franklin Matthias To Head Great B.C. Project

RICHLAND, Wash. (AP)—Col. Franklin T. Matthias, wartime construction chief at the Hanford Plutonium Works, has been named general manager of the \$550,000,000 Kitimat project in British Columbia.

In his new post Matthias will be employed by the Aluminum Company of Canada, Ltd. His headquarters will be at Vancouver.

The Kitimat project is described as one of the most spectacular engineering efforts attempted by man. It involves construction of a huge aluminum reduction plant at Kitimat, about 50 miles southeast of Prince Rupert, and construction of a huge power plant on the Nechako River which is expected to be comparable to the Grand Coulee dam plant.

Since leaving Hanford after the war, Matthias has been in charge of the construction of huge hydro-electric projects in Brazil which were largely financed by Canadian firms.

Friends here last week learned of his Kitimat appointment.

Work has been completed from the mine portal to the mill ore bin. The crushing plant is complete except for installing the rolls, which are on hand. Footings are all in for the table concentrators and footings for the flotation equipment are under construction. The ball mill is being placed on its foundations and the thickener installation is nearly complete. Work on electric wiring is also well advanced. The completion of a transmission line to the Rocher de Boule mine, mill and camp.

The new high capacity compressor have been installed at the Red Rose, providing more than sufficient air to operate that mine at mill capacity.

Assaying for both mines is in charge of assayer and chemist, Leslie R. Harrison, who has had experience with both copper and tungsten.

Western Uranium's Red Rose mine joined the ranks of B.C. producers before the end of 1951. The company's Rocher de Boule mine will shortly be in a position to demonstrate its earnings potential, officials point out.

Ships and Waterfront
Sailings from here for Vancouver by the steamer Chilcotin will in future be at 8 p.m. During recent weeks the sailings had been at midnight alternate Sundays. Henceforth it will be 8 p.m. every Sunday.

Tenders on Big Seaway

TORONTO — The government's newly-created St. Lawrence seaway authority intends to call tenders for as much as possible of the construction of the big waterway, Transport Minister Chevrier said.

"We cannot be sure yet that that will mean all its construction work, but it should mean the greater part," he told the Canadian Construction Association in an address prepared for its annual dinner.

There is no thought of the authority undertaking anything that can be done as well or better by private firms in the construction industry.

He estimated requirements of material, should the United States decide to join in the construction but not including power houses or power development in the Lachine section, at: 70,200 tons of reinforcing steel; 108,600 tons of structural steel; 4,400 tons of copper; 7,630,000 barrels of cement, and 118,700 thousand board feet of lumber.

Roughly one-half of the quantities would be required in Canada, with a greater proportion in lumber and a lesser proportion in steel. So far as Canada was concerned, average annual steel requirements would be a little more than two per cent of present annual consumption and average annual cement requirements about four per cent.

Employment on the project would average about 15,000 men, "assuming an accelerated construction schedule to complete the work in five years," said Mr. Chevrier. Of these, an average of about 9,500 would be employed in Canada.

He said Canada is determined to have the seaway "at the earliest possible date" and to "override the powerful minority interests that have denied it to us these 20 years and more."

Canada would prefer to have full U.S. participation in the project. But Canada no longer could afford to rely on full U.S. participation as the only choice.

BRISBANE, Australia — Former Royal Navy Captain H. V. Hudson, 68, who sailed from Britain three years ago in a 75-foot ketch "to see the world," has arrived in Australian waters. Captain Hudson said he is taking the ketch Palamosa around the world because he "loves the sea."

DANCE, Ont. (CP)—Two farmers near this village in the Rainy River district used part of the Christmas holiday season to thresh grain. As in parts of the west, threshing could not be completed last fall because of bad weather.

Stewart Mines Change Hands

STEWART—The Forty Nine and the Hercules Mines are reported to have been purchased by Vancouver interests and work will be commenced sometime during this year.

The Hercules has all the earmarks of a producer of base metals. High gold and silver values have also been encountered on the Forty Nine which was operated some years ago under the direction of Harry Howson, a well known mining operator.

Future developments on these properties will be watched with interest by the people of this district.

Stewart Pioneer Hospital Patient

STEWART—Mike Birmingham, an old time Alaskan and Yukoner, was taken to the Stewart General Hospital for treatment. He is reported to be making good progress towards recovery.

Extensive Work For Silver Tip

STEWART — Returning from the south last week W. R. Tooth, chairman of the Village Commissioners, said he had had a pleasant trip during which he attended the Liberal Convention as representative of the Alibi Liberal Association. Mr. Tooth also attended the annual meeting of Silver Tip Mining Company and reports that finances are available for extensive development this year.

New mine equipment will be installed and work on the property will be pushed expeditiously on the various showings. The shipments made during the past year 1951 were extremely encouraging and furnish evidence of the potentiality of the property as a future producer.

Many Nations See Canadian Picture Of Royal Journey

OTTAWA — Arrangements have been completed for wide international distribution of "Royal Journey," the new color film by the National Film Board on the visit of Princess Elizabeth and the Duke of Edinburgh to Canada and the United States.

Details of the arrangements were announced by W. Arthur Iwin, chairman of the crown-owned film board.

In the United Kingdom the film will be distributed by General Film Distributors of the J. Arthur Rank organization. It opened its first engagement in U.K. Odeon, Leicester Square, London on Jan. 17. It is expected to be shown in some 2,000 theatres in the British Isles.

In the United States, theatrical rights to the film have been obtained by United Artists Corporation and it will be given national distribution throughout the United States as a feature.

The film will be distributed in the British Commonwealth, western Europe, Africa and the Far East by J. Arthur Rank Overseas Film Distributors, Limited.

An original Canadian version in French will be used in France, and other French-language countries.

If you want to sell it, advertise it. News classified.

GEORGE DAVES AUCTIONEER
Phone Green 310 and Red 127

This is the Gin
Quality Incomparable
Gordon's
Stands Supreme
TANQUERAY, GORDON & CO. LTD.
... the largest gin distillers in the world.
This advertisement is not published or displayed by the Liquor Control Board or by the Government of British Columbia.

Stewart Logging Outfit Lands Two Million Feet Now Cut

STEWART.—Towed by the tug "Legarda" Vancouver Tug Boat Company, equipment Western Wood Products Logging Co. was here last Thursday.

Taken in tow by E. Lewis' gas boat the scow was landed at high tide on the tide flats. A ramp was made and the equipment, consisting of two tractors, two pick-up trucks, two six wheeler trucks with trailers and one donkey engine, were landed under their own power.

A road across the half mile of flats bulldozed by Bill Kilroy of the Alaskan Road Department, the Public Works equipment being in use at the time. The Captain of the Tug reported during the voyage and he had to pull into Port Simpson where he was detained twelve hours on account of the weather.

The heavy snow here has caused a let-up in the logging operations of the company but it is expected that, with the new equipment, operations will be resumed with unabated energy. It is reported that there are two million feet of logs ready for shipment to the Westland pulp mill.

Stewart Canal Under Option

STEWART—John reports that his property (Canal Gold Mine) has been under option and that work is to be commenced shortly. The mine adjoins the Big Four and has been reported favorably by several engineers.

Considerable work has been done but during the option made this year showing was uncovered. It is said, considerably the value of the property.

Today to Saturday
Gayer than "Annie Get Your Gun"! More melody magic than "Caruso"! Richer in romance than "Show Boat"!
An American in Paris
TO THE MUSIC OF GEORGE GERSHWIN STARRING GENE KELLY AND INTRODUCING LESLIE CARON OSCAR LEVANT + GUETARY NINA FOCH Technicolor
Evening Shows 7 - 9:05 p.m.
Matinee Sat. 2 p.m.
TOTAL
A FAMOUS PLAYERS THEATRE

TODAY 7 - 8:20 "BANNERLINE" THE MAN WITH A CLOAK
A Love Story That Pulls No Punches
Paramount presents
KIRK DOUGLAS PARKER BENDIX
ELEANOR WILLIAM
WILLIAM WYLER'S PRODUCTION BY SIDNEY KINGSLEY
Detective Story FROM THE SMASH STAGE SUCCESS!
TOMORROW Plus
CAPITOL Cartoon Evening Shows
A Famous Players Theatre News Sat. Matinees

SQUARE Friday, January 25th
CIVIC CENTRE
8 - 10:30 p.m. Everyone Welcomed
DANCING

-DISHES-
We have the largest stock of dishes in Northern B.C.
DINNER SETS
BREAKFAST SETS CUPS and SAUCERS
Especially good selection of TEAPOTS and WHITE KITCHENWARE
Gordon & Anderson
Phone 46