



# What the PROGRESSIVE CONSERVATIVE PARTY Stands for...

## OUR PLEDGE

**T**HE B.C. Progressive Conservative Party is pledged to careful, efficient and honest administration and to courageous development of the God-given and matchless resources of this province for the benefit of all our people. We will protect freedom and enlarge opportunity for the individual as natural rights of all those who dwell within our borders today, and as a heritage for generations to come.

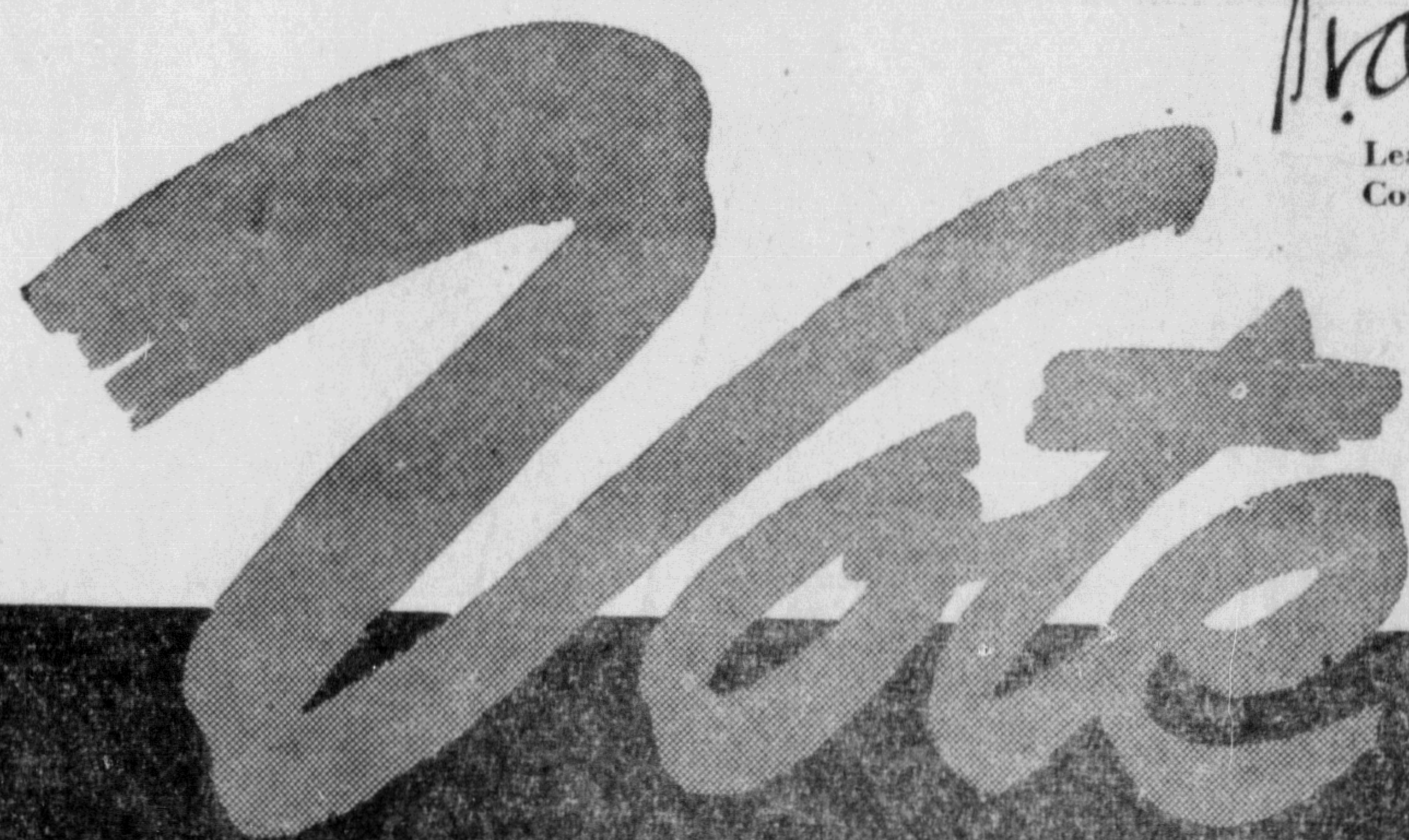
The B.C. Progressive Conservative Party believes that the welfare of the people is best assured by a minimum of compulsion by governments; that the increasing intrusion of government authority into the private affairs of the individual must be curbed; that the growth of bureaucratic controls brings burdensome and destructive taxation, and endangers the freedom of all our people.

The life of our province is the sum of the daily effort of all those who toil in mill or mine, factory, field or forest; in office, shop, school or home, and in the many other pursuits of our people. For all of them, the opportunity to work and save, to win advancement by ability and application, to found and maintain families, to find happiness and contentment, are of prime importance.

To achieve these aims, we pledge ourselves to deal reasonably and justly with the problems of all our people, to ensure equality of opportunity to all our citizens, to preserve freedom and to oppose monopoly.

The B.C. Progressive Conservative Party pledges itself to support in every way these principles and the actions outlined in its platform.

*Tom Christie*  
Leader B.C. Progressive Conservative Party



### HOSPITAL INSURANCE...

We recognize the wide-spread dissatisfaction with the British Columbia Hospital Insurance Service as presently carried on in the Province.

The Progressive Conservative Party will institute a new plan of Government Hospital Insurance that will be on a non-compulsory, non-monopolistic basis, and will eliminate the problem of co-insurance.



### EDUCATION COSTS...

That the Progressive Conservative Party will review the problem of School Finance as it exists at present, including mounting costs, and costs of school construction, with a view to effecting a more equitable distribution of the Province's contribution.



### FOREST MANAGEMENT...

We will appoint at once a Commission of Inquiry to review the present Forest Management Policy in order to make recommendations as to how:

- (a) to ensure perpetual yield of our forests;
- (b) to provide adequate opportunity for small loggers, mill operators and all others who desire to use and develop the forest resources of the Province;
- (c) to safeguard for the public the mining, power, fishing and recreational resources within all management license areas.



### HIGHWAYS...

We propose to continue and to accelerate the highway program laid down by the Conservative Section of the Coalition in 1943, which has been carried out continuously since then.

The B.C. Progressive Conservative Party will reduce the cost of license fees on all private passenger automobiles by 30% from the present prevailing license fees.



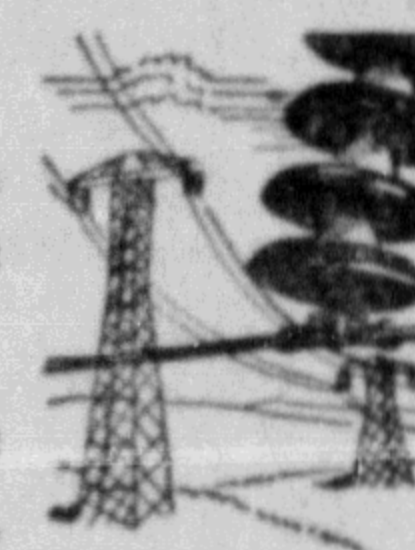
### PACIFIC GREAT EASTERN RAILWAY...

As proposed by the Conservative Party members in the Legislature, immediately on forming a Government, we shall proceed to extend the P.G.E. into North Vancouver, with the final object in view of extending the railway from Prince George into the Peace River area.



### LIQUOR PLEBISCITE...

The B.C. Progressive Conservative Party stands for local option.



### POWER DEVELOPMENT...

The B.C. Progressive Conservative Party will implement the Electric Power Act in accordance with the original intention of the Legislature, to provide power and light to our rural areas.



### AGRICULTURE...

We advocate a reorganization and extension of the services of the Department of Agriculture, to make the services of the department, particularly in the information field, more widely available to the farmers.

We propose to negotiate with the Federal Government to make the Prairie Farm Rehabilitation Act applicable to the whole of B.C., so that our fertile but undeveloped agricultural areas can be brought under irrigation or be reclaimed.



### PROVINCIAL-MUNICIPAL TAXATION REFORM...

The B.C. Progressive Conservative Party proposes the payment of grants in all areas where there is Provincial Government real property.



### LABOR-MANAGEMENT RELATIONS...

The B.C. Progressive Conservative Party is pledged to give consideration to the reports of the Industrial Conciliation Act Inquiry Board Report, and to the report by Chief Justice Sloan on the Workmen's Compensation Act, at the next session of the Legislature, in the best interests of Labor, consumers and industry.



### EXPORT TRADE...

The B.C. Progressive Conservative Party is deeply concerned over the deterioration of conditions in our basic industries in British Columbia due to loss of export trade. It is the firm belief and determination of the Party that some method can and must be found to simplify financial arrangements between the dollar and sterling areas of the Commonwealth and other nations. The Progressive Conservative Party will use its best efforts to bring about a betterment of trade within the Commonwealth.



### SEPARATE SCHOOLS...

The B.C. Progressive Conservative Party believes in the democratic system of non-sectarian schools as at present established by law in the Province of British Columbia.

# PROGRESSIVE CONSERVATIVE

JUNE 12