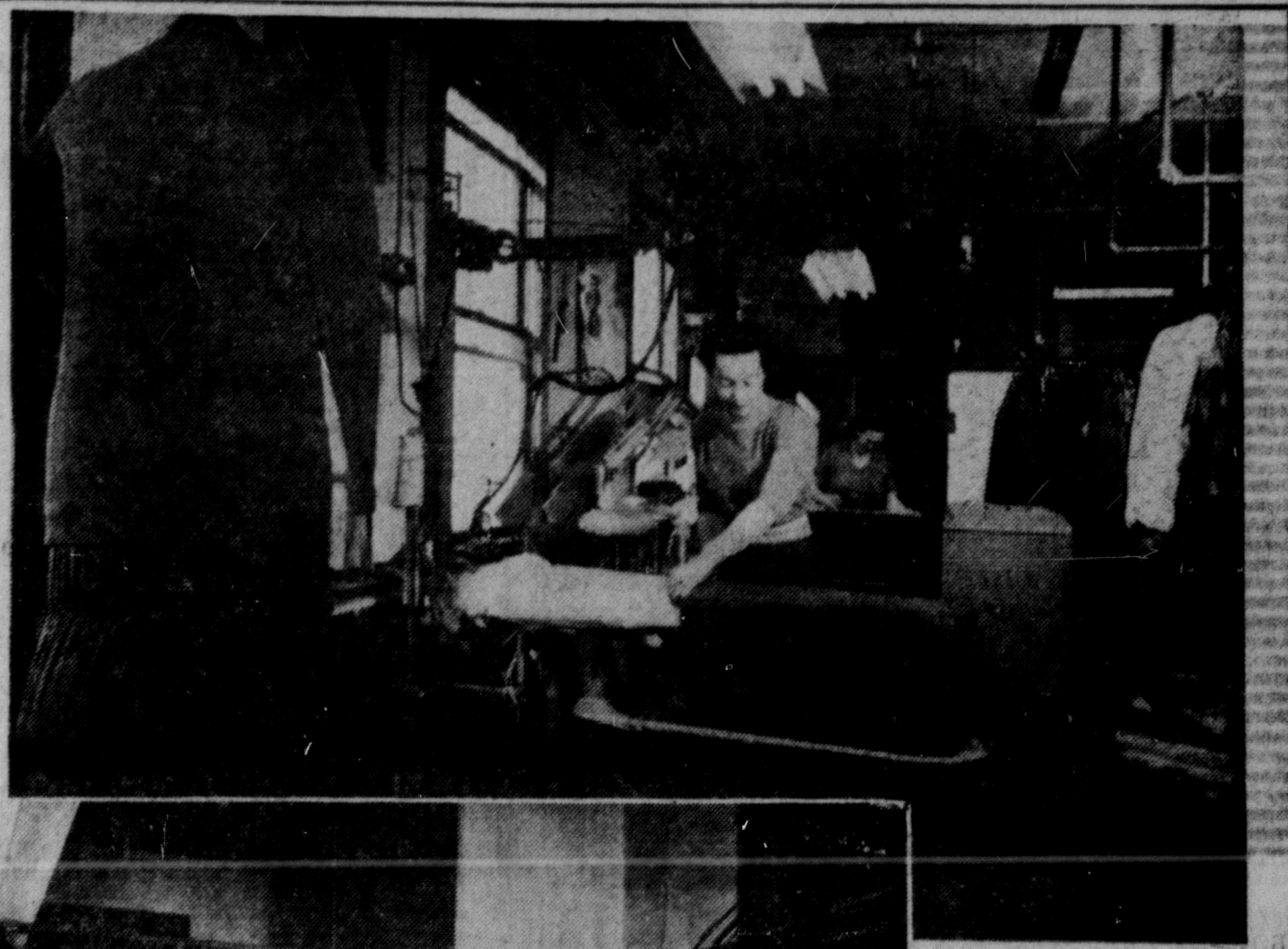
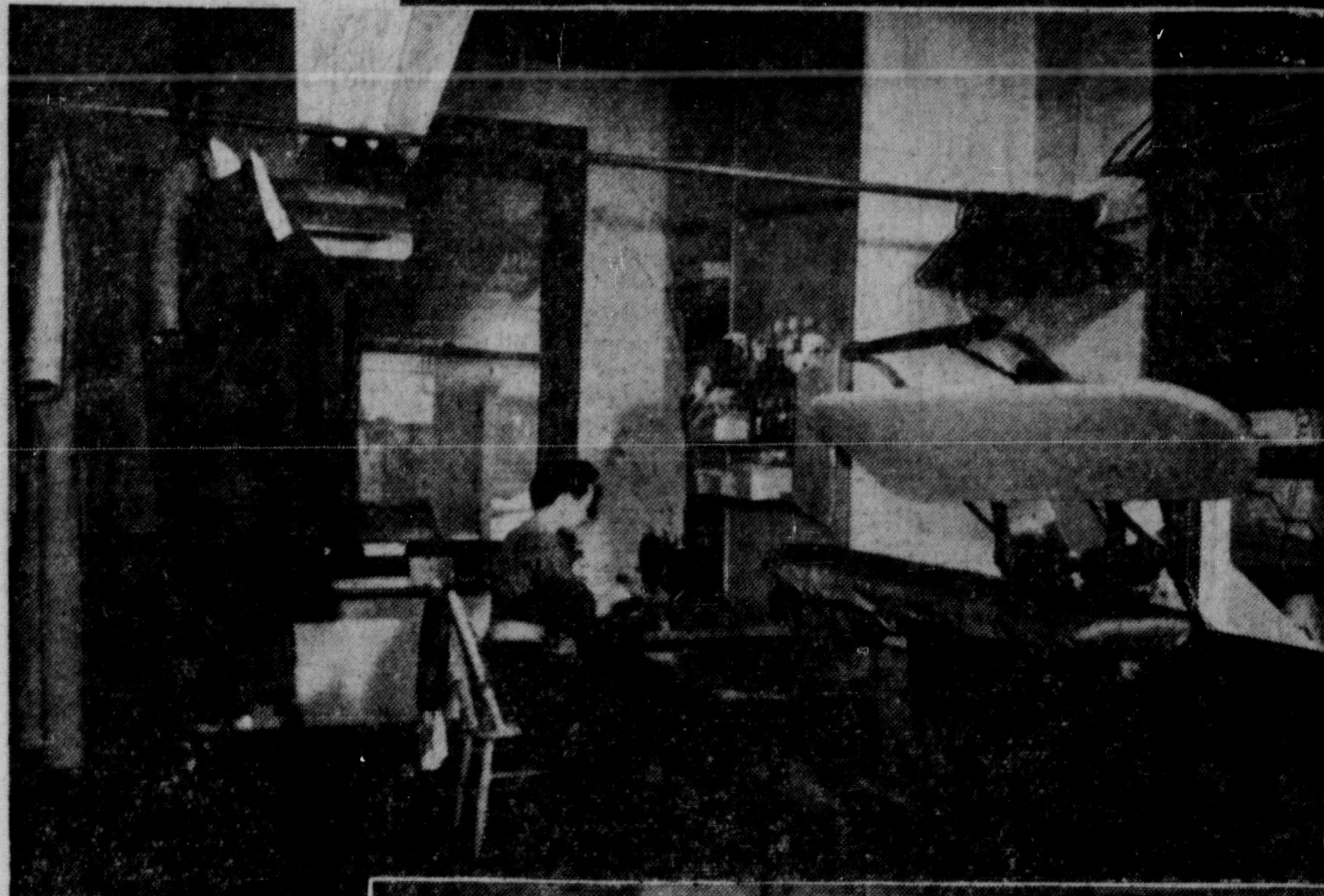


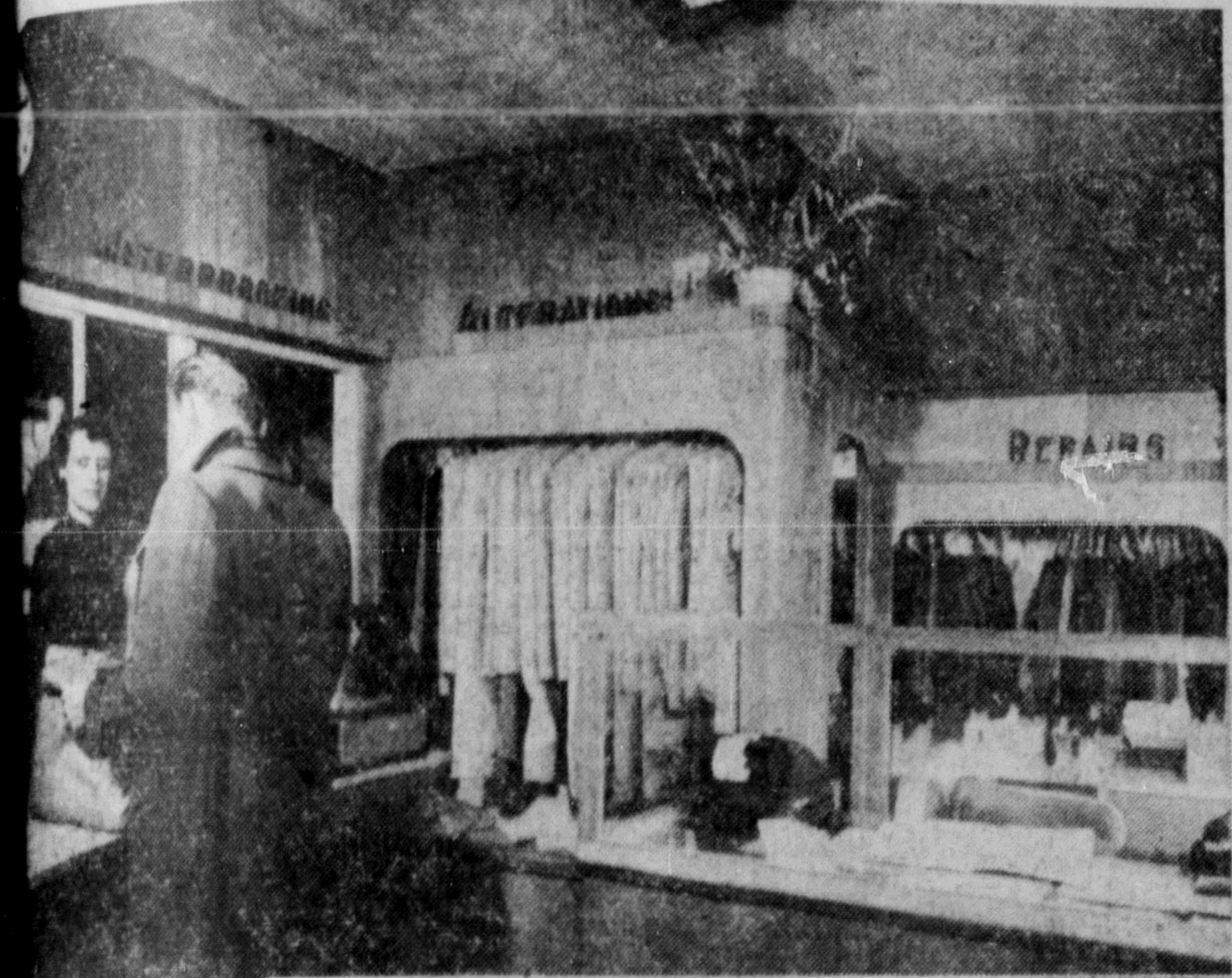
STORY



(ABOVE)
The silk and fine wool finishing departments, showing Adjusto-form machine, steam and vacuum ironing boards, steam and vacuum puffer units, and a steam, vacuum and compressed air spotting board, as well as a steam sleeve.



Repair and alterations department, which also has, besides a power tailoring machine, a name embroidering machine, as well as a sock and linen mending machine.



The attractive front office interior, with indirect lighting, and walls panelled in natural wood, where a friendly and courteous clerk will assist you either personally or over the telephone in filling your requirements.



... offices ... accounting, and billing ... A ... bookkeeping ensures correct ... statements ... accounts. In the ... Hugo Kraup ... and Man ... in front ... Anderson, ... treasurer of ...

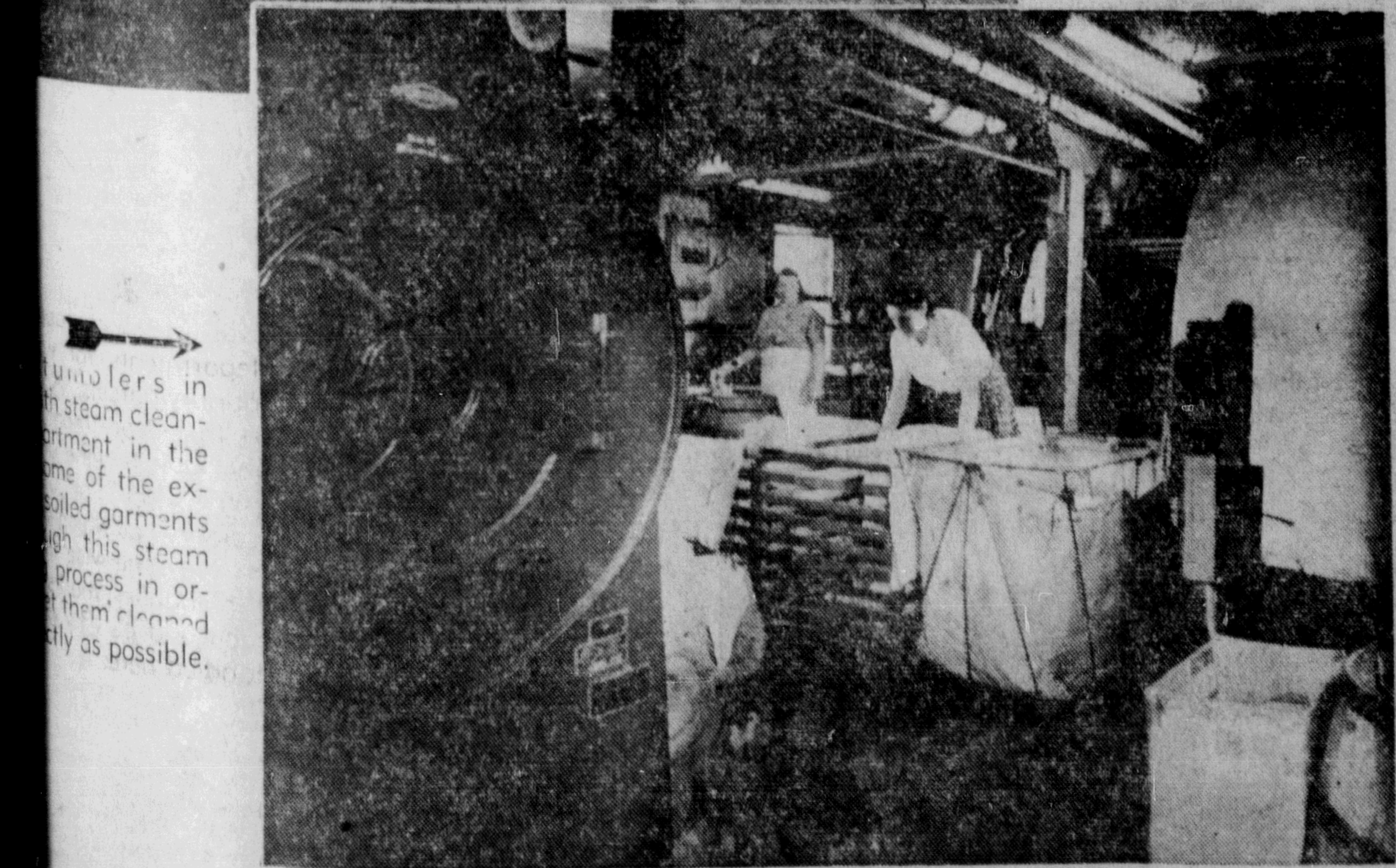
Three steam pressing and finishing machines for all-wool garments, also for drapes, covers and other diverse flat household goods ... All sleeves on men's or ladies' suits or coats are rolled. Sleeves may be creased if the customer wishes to have them done that way.



This room is located next to the dry cleaning room. The machine in the back, showing the operator in front of it, is the deodorizing machine in which all dry cleaning fumes are eliminated by way of fresh, clean, heated air. It also shows racks with dry-cleaning hanging up ready for the steam spotting process.



Another view of the silk finishing department, showing the steam sleeve finisher; also the assembly line where all orders are inspected for proper workmanship and checked against your bill before delivery.



... mulers in ... steam clean ... department in the ... some of the ex ... soiled garments ... hough this steam ... process in or ... them cleaned ... tly as possible.

Loading ramp showing three trucks ready to go out on delivery, as well as the type of shipping hamper employed with our many agencies in every part of the northern country.



MAIL ORDERS PROMPTLY ATTENDED TO