

### Underwater Television Interests 12 Nations

Last year the British succeeded in finding their sunken submarine Affray by television in the English Channel. Since then two of their radio and marine salvage manufacturers have got together and produced underwater television that looks like opening up new fields in marine research and salvage.

Foreign countries are also interested, and pictured above are eleven naval attaches — from Argentina, Brazil, Chile, Denmark, Holland, Italy, Norway, Spain, Sweden, Turkey and Venezuela—plus British officials watching an underwater camera being lowered into a test tank. Left: What they saw on the television screen—a close-up of a diver at work.

### Antarctic Isles Ice Circle Arctic Region

Three glacial water ice islands which had their origin hundreds of thousands of years ago, have been under observation by Canada's defence research board's Arctic section.

The islands drift in shape with fur surfaces the islands drift around the top of the in a jagged circle. They more than five years to the circle.

They can be seen shifting in shape with fur surfaces the islands drift around the top of the in a jagged circle. They more than five years to the circle.

They can be seen shifting in shape with fur surfaces the islands drift around the top of the in a jagged circle. They more than five years to the circle.

They can be seen shifting in shape with fur surfaces the islands drift around the top of the in a jagged circle. They more than five years to the circle.

They can be seen shifting in shape with fur surfaces the islands drift around the top of the in a jagged circle. They more than five years to the circle.

They can be seen shifting in shape with fur surfaces the islands drift around the top of the in a jagged circle. They more than five years to the circle.

They can be seen shifting in shape with fur surfaces the islands drift around the top of the in a jagged circle. They more than five years to the circle.

They can be seen shifting in shape with fur surfaces the islands drift around the top of the in a jagged circle. They more than five years to the circle.

They can be seen shifting in shape with fur surfaces the islands drift around the top of the in a jagged circle. They more than five years to the circle.

They can be seen shifting in shape with fur surfaces the islands drift around the top of the in a jagged circle. They more than five years to the circle.

They can be seen shifting in shape with fur surfaces the islands drift around the top of the in a jagged circle. They more than five years to the circle.

### WINCH LACES (Continued from Page 1)

pital inquiry board," said Mr. Winch, who was a member of the board, "even though the report showed how administration costs could be cut by \$1,000,000 and the number employed to administer the service could be reduced from the present 643 to 223."

"If you put hospital insurance on a voluntary basis you'll wreck it. You'll have to pay more than you are today."

"No private insurance company can give you what you are getting today for less than \$100 or \$150 a year."

"If, as the Social Credit and Conservatives say, private companies are going to compete with the government, that means your rates will go up."

The CCF policy on insurance would be to abolish co-insurance and exempt low-income groups. The party also, if elected, would "give car accident insurance at cost by setting up a government operated system to give you much more protection for much less than you pay now."

Stressing that the government should receive more revenue from the natural resources, Mr. Winch said "we believe the people have the right to be true partners in government and we do not agree to a \$51,000,000 profit by Consolidated Mining & Smelting Company while they pay only \$1,400,000 in taxes."

### SOCIAL CREDIT

Referring to the Social Credit party, he said: "First of all, B.C. was worried about hoof and mouth disease, and now it's Social Credit."

"And I'm sure we don't want them or any kind of party that brings in a printed program at a democratic meeting and tells you you must approve it without discussing it."

"That's how the Social Credit party platform was set up in convention at New Westminster."

Mr. Winch said the CCF believes in the people being full partners in the running of the government.

"The Liberals, Conservatives and Social Crediters stand for a system of competition, the end of a transitional period to a system of co-operation."

Mr. Winch asked electors to vote for the CCF on June 12

and, although he did not urge that voters "plump," he made no mention of the party to whom the CCF wish the people to cast their second or third choice votes under the preferential system which comes into effect for the first time in B.C. for this election.

### FIRST CHOICE, CCF

Asked by a member of the audience of more than 300 the party's view on second choice, Mr. Winch said "that's your business, but vote Number 1 for the CCF."

"It doesn't make any difference to the CCF what your second choice is. That's why we have made no policy on the matter."

Prior to Mr. Winch's address, George Hills, CCF candidate for Prince Rupert, and Frank Howard, the party's standardbearer in Skeena riding, spoke briefly.

### GEORGE HILLS

Mr. Hills criticized the housing project now under way in Prince Rupert and said the city council, of which he is a member, and Chamber of Commerce should not be too proud of boasting about their efforts to get the houses even though

they pressed for the construction.

Average cost of the homes will be \$10,750, said Mr. Hills, while the same home costs only \$7500 to build in Vancouver or Moose Jaw.

"Even allowing \$1000 for muskeg and rock, that still leaves \$2000 to be accounted for," said the speaker, adding that rents, "which will average from \$60 to \$85," are also out of line.

### NO NATIONAL ANTHEM

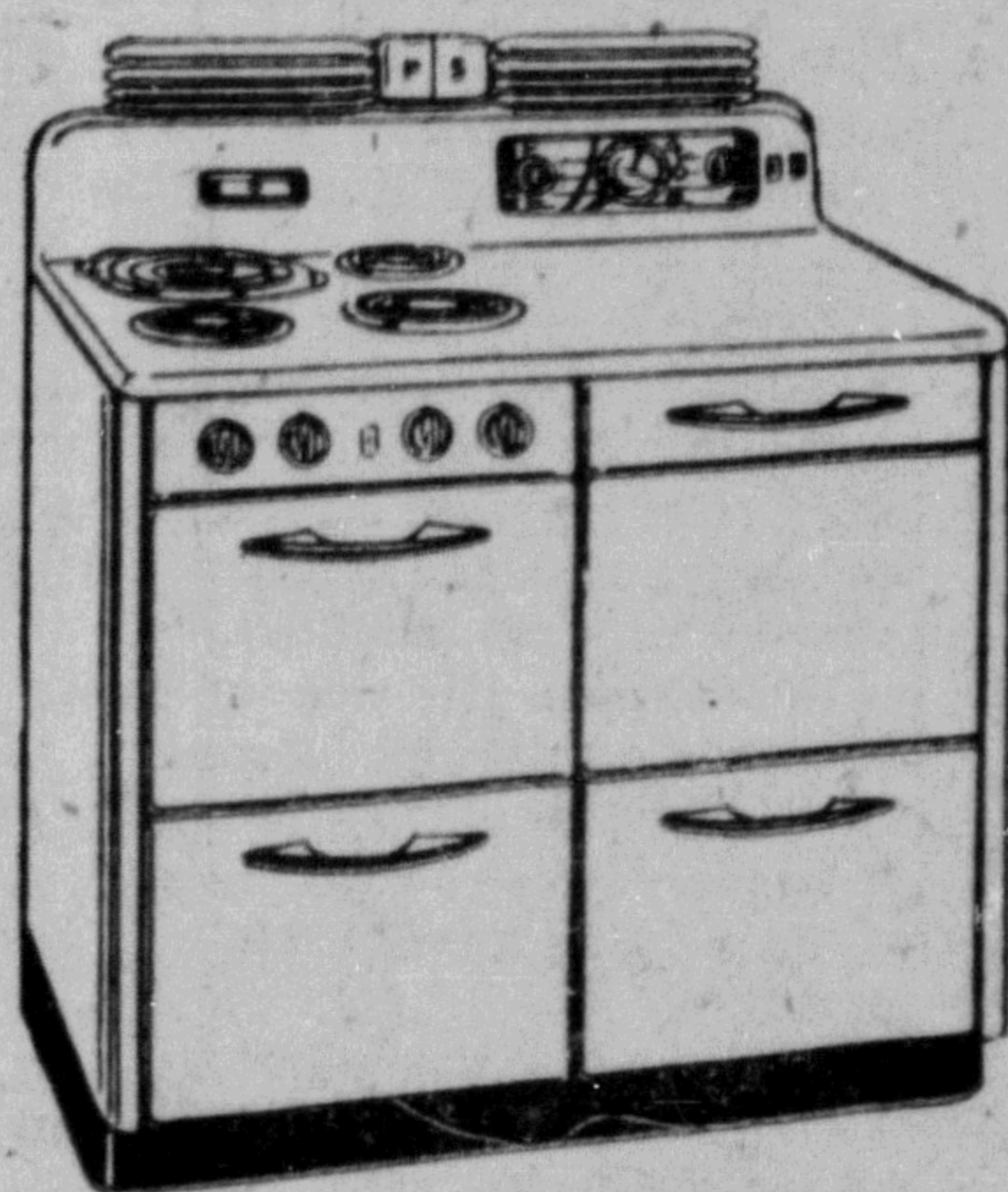
At the conclusion of his address Mr. Winch called for questions from the audience and after a lively 15 minute session he thanked the audience for their attentiveness and the meeting broke up.

As the crowds streamed out the door one man said, "How about singing O Canada?"

Mr. Winch said, "Okay, I'll sing it with you," and an elderly man near the platform headed for the stage to play the piano, but the crowd continued to disperse, and it was not sung.

In the lobby of the Civic Centre, several citizens remarked about the failure to close the meeting with O Canada, one man saying: "We always close our meetings in Prince Rupert by singing the National Anthem."

Reddy says, "You'll sing all through '52 if you buy an



### ELECTRIC RANGE



It's such a delight to cook with an electric range! Just about runs itself. All you do is set the clock and press a button... Result—better cooking, more nutritious food... and lots more leisure for yourself.

An electric range gives even heat, exactly right... and all of it going into the food, not escaping into the kitchen. Economical in fuel and food value. You can set it and forget it... and dinner is ready on the dot. Start now to get greater pleasure from cooking... and give greater pleasure with what you cook.

Drop in soon to look over the latest devices for easy cooking.

**NORTHERN BRITISH COLUMBIA POWER COMPANY LIMITED**

### Accident-Free Safety Week For Cellulose

Columbia Cellulose Company at Port Edward was one of seven large B.C. firms which emerged without a single compensable accident during a recent safety week held by primary branches in the forest industry.

The contest was between the primary mills of the pulp and paper industry, which employs 6,500.

Other mills included in the accident-free week were: Alaska Pine and Cellulose Ltd., Port Alice and Woodfibre; MacMillan and Bloedel, Nanaimo and Port Alberni; Powell River Co., Powell River; Pacific Mills Ltd., Ocean Falls; Howe Sound Pulp Co. Ltd., Port Mellon, and the Westminster Paper Company at New Westminster.

The Canadian Pulp and Paper Association (western branch) said that due to the continued efforts and co-operation of employees and management the accident frequency of the industry during the past five years has been reduced 80 percent.

During the same period, the accident severity rate has also been reduced 84 percent, the association said in a prepared statement.

Sqdn.-Ldr. Greenaway said T1 is 17 miles long and 13 miles wide. He doubted whether it was more than about 30 feet thick.

Canadian fliers and scientists have found seven smaller ice islands similar to the three "T's" in waters among the Canadian Arctic islands. In 1950 an ice-breaker heading north between Ellesmere Island and Axel Heiberg Island bounced into an island which proved too solid for the vessel.

Bare of all vegetation, polar bears roam over them in search of seals and in their wake follow the Arctic foxes.

Whom the islands belong to hasn't been touched.

paper industry, which employs 6,500.

Other mills included in the accident-free week were:

Alaska Pine and Cellulose Ltd., Port Alice and Woodfibre; MacMillan and Bloedel, Nanaimo and Port Alberni; Powell River Co., Powell River; Pacific Mills Ltd., Ocean Falls; Howe Sound Pulp Co. Ltd., Port Mellon, and the Westminster Paper Company at New Westminster.

The Canadian Pulp and Paper Association (western branch) said that due to the continued efforts and co-operation of employees and management the accident frequency of the industry during the past five years has been reduced 80 percent.

During the same period, the accident severity rate has also been reduced 84 percent, the association said in a prepared statement.

Sqdn.-Ldr. Greenaway said T1 is 17 miles long and 13 miles wide. He doubted whether it was more than about 30 feet thick.

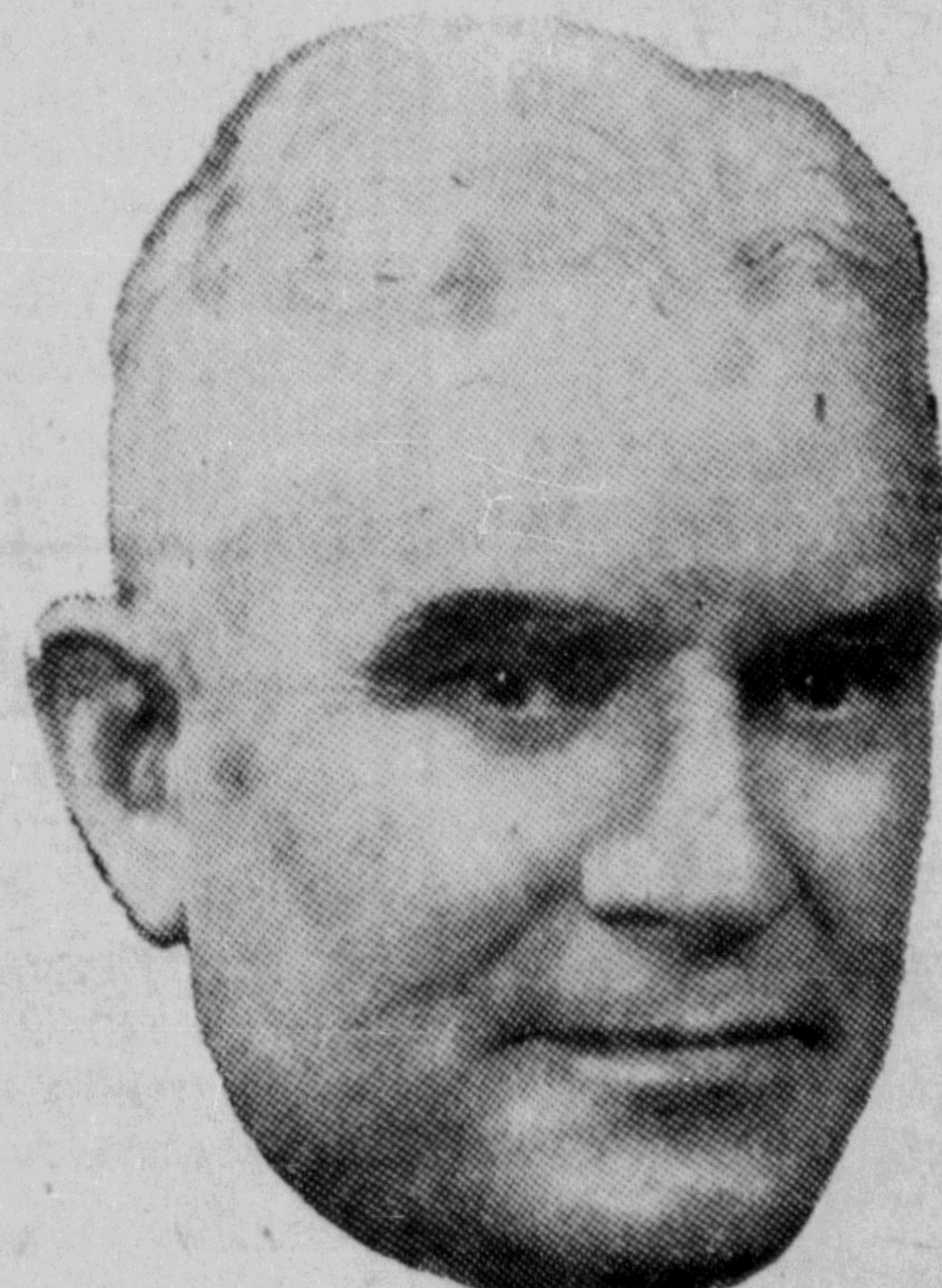
Canadian fliers and scientists have found seven smaller ice islands similar to the three "T's" in waters among the Canadian Arctic islands. In 1950 an ice-breaker heading north between Ellesmere Island and Axel Heiberg Island bounced into an island which proved too solid for the vessel.

Bare of all vegetation, polar bears roam over them in search of seals and in their wake follow the Arctic foxes.

Whom the islands belong to hasn't been touched.



**APPOINTMENT OF OFFICIAL AGENT**  
(Section 67)  
Take notice that FRANK CALDER, C.C.F. Candidate in the Atlin Electoral District, is acting as his own agent.  
**FRANK CALDER,**  
Candidate.



# The Johnson Administration has given British Columbia the best government in history!

Vote  
**LIBERAL**  
The Capable Administration

Inserted by the B.C. Liberal Association

**Delicious TUNA FISH SALAD**  
MADE WITH COLMAN'S MUSTARD

**TUNA FISH SALAD**  
2 cups canned tuna fish  
1 cup diced celery  
2 tablespoons minced onion  
2 tablespoons vinegar  
1/2 teaspoon salt  
1/2 teaspoon pepper  
1/2 teaspoon Colman's Mustard  
1/2 cup salad dressing

Break tuna into large pieces, combine with ingredients and mix lightly. Serve in lettuce cups garnished with stuffed olives and lemon wedges.

For free recipe booklet, write to Colman's & Colman (Canada) Ltd., Station T, Montreal.

**Colman's D.S.F. MUSTARD**

**PLANNING A HOLIDAY?**

Membership in AAA offers many advantages—Low Cost and helpful services, including towing charges, etc.

See P. H. LINZEY  
Representatives for Prince Rupert offices over Broadway Cafe

**A LIST OF THE VERY BEST USED CARS at SAVINGS**

- ★ 1—1937 Ford Sedan
- ★ 1—1941 3/4-ton International Panel
- ★ 1—1949 Austin
- ★ 1—1949 Morris
- ★ 1—1951 5-ton Austin Truck

**Superior Auto Service Limited**  
Third Avenue West Phone Green 217

Say Seagram's and be Sure

- Seagram's Crown Royal
- Seagram's V.O.
- Seagram's "83"
- Seagram's King's Plate
- Seagram's Special Old

This advertisement is not published or displayed by the Liquor Control Board or by the Government of British Columbia.